

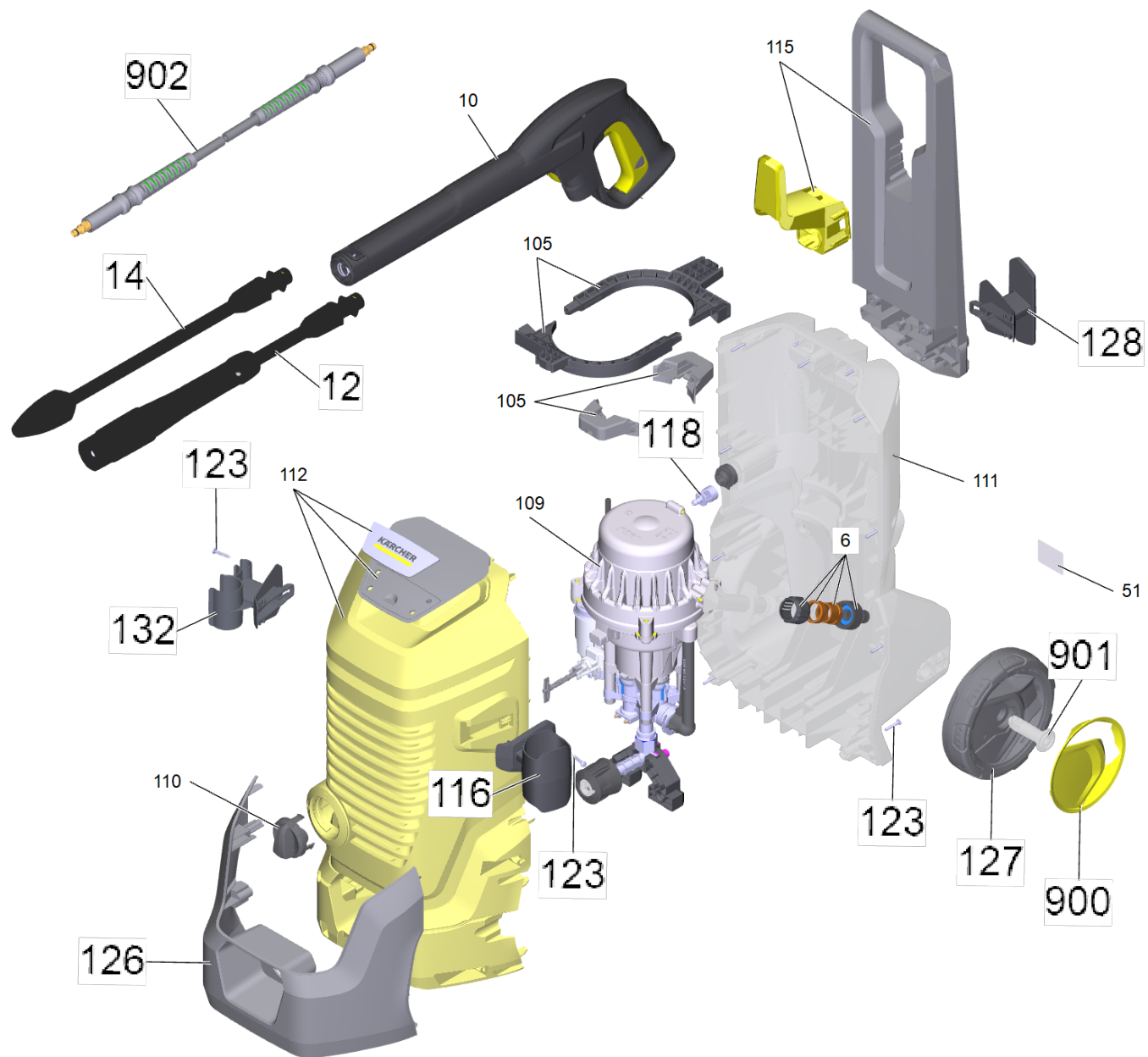
## **Spare parts list**

(1.324-200.0) K 4 WCM \*EU

## Table of contents

---

K 4 WCM *EU (1.324-200.0)	3
10 G 180 Q Trigger gun Quick Connect (2.642-889.0)	5
12 VP 145 Vario Power Jet (packaged) (2.642-725.0)	7
14 DB 145 rotor nozzle packaged (2.642-728.0)	9
109 Pump set cpl. K4 WCM	11
10 Motor cpl. for replacement H65 M1100 WCM 3.5 (9.013-800.3)	13
5 Motor complete H65 M1100 WCM 3.5	15
110 Thrust guidance complete (9.013-340.0)	17
120 Pump WCM plastic (HR) new	19
1 Head end WCM c/guarnizioni Tuico (9.002-552.0)	21
2 pressure piston HR (spare) (9.002-028.0)	23
140 Suction connection with filter cpl. (4.101-098.0)	25
170 Electrical box WCM SC ZE 30 uF (9.013-929.3)	26
118 Hose Detergent Compact NCR	28
902 H 9 Q high pressure hose Quick Connect (2.641-721.0)	30



## K 4 WCM \*EU (1.324-200.0)

POS	Article no.	Description	Quantity	Unit
900	9.038-445.0	Black cover FC 1K wheel D160	2	PC
126	9.038-774.3	Bumper K4&K5 WCM	1	PC
14	2.642-728.0	DB 145 rotor nozzle packaged	1	PC
10	2.642-889.0	G 180 Q Trigger gun Quick Connect	1	PC
902	2.641-721.0	H 9 Q high pressure hose Quick Connect	1	PC
115	4.101-101.0	Hand grip cpl.	1	PC
110	9.038-808.0	Handhold switch	1	PC
128	5.039-601.0	Holder for hose and cable (MR) s./b.	1	PC
132	9.038-781.3	Holder jet pipe double WCM	1	PC
116	9.038-806.3	Holder pistol WCM K4-5-7	1	PC
118		Hose Detergent Compact NCR	1	PC
112	4.101-104.0	Housing front cpl. K4 WCM	1	PC
111	9.038-773.3	Housing rear K4&K5 WCM	1	PC
901	9.038-446.0	Plastic axle wheel D160 FC	2	PC
109		Pump set cpl. K4 WCM	1	PC
123	9.086-221.0	Screw ATF 4.1x22	10	PC
105	4.101-099.0	Spare parts set retainer pump	2	PC
6	2.645-010.0	Tap adaptor for inhouse fittings	1	PC
12	2.642-725.0	VP 145 Vario Power Jet (packaged)	1	PC
51	5.387-620.0	Warning sign new	1	PC
127	9.038-443.0	Wheel FC 1K D160	2	PC

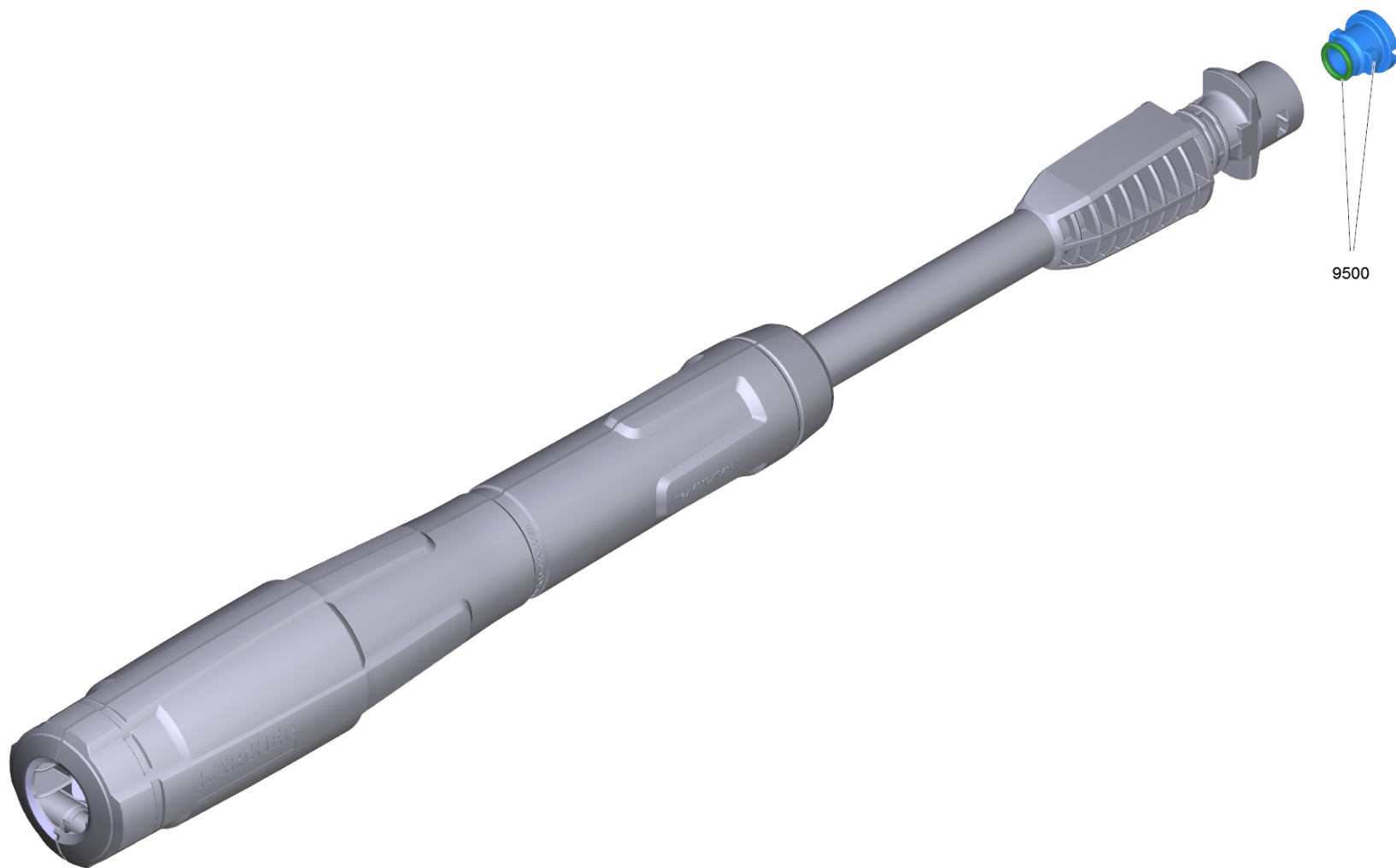


10 G 180 Q Trigger gun Quick Connect (2.642-889.0)

---

POS	Article no.	Description	Quantity	Unit
1	5.332-464.0	Pressure spring	1	PC

---



12 VP 145 Vario Power Jet (packaged) (2.642-725.0)

---

<b>POS</b>	<b>Article no.</b>	<b>Description</b>	<b>Quantity</b>	<b>Unit</b>
9500	2.640-729.0	O-Ring seal set	1	PC

---



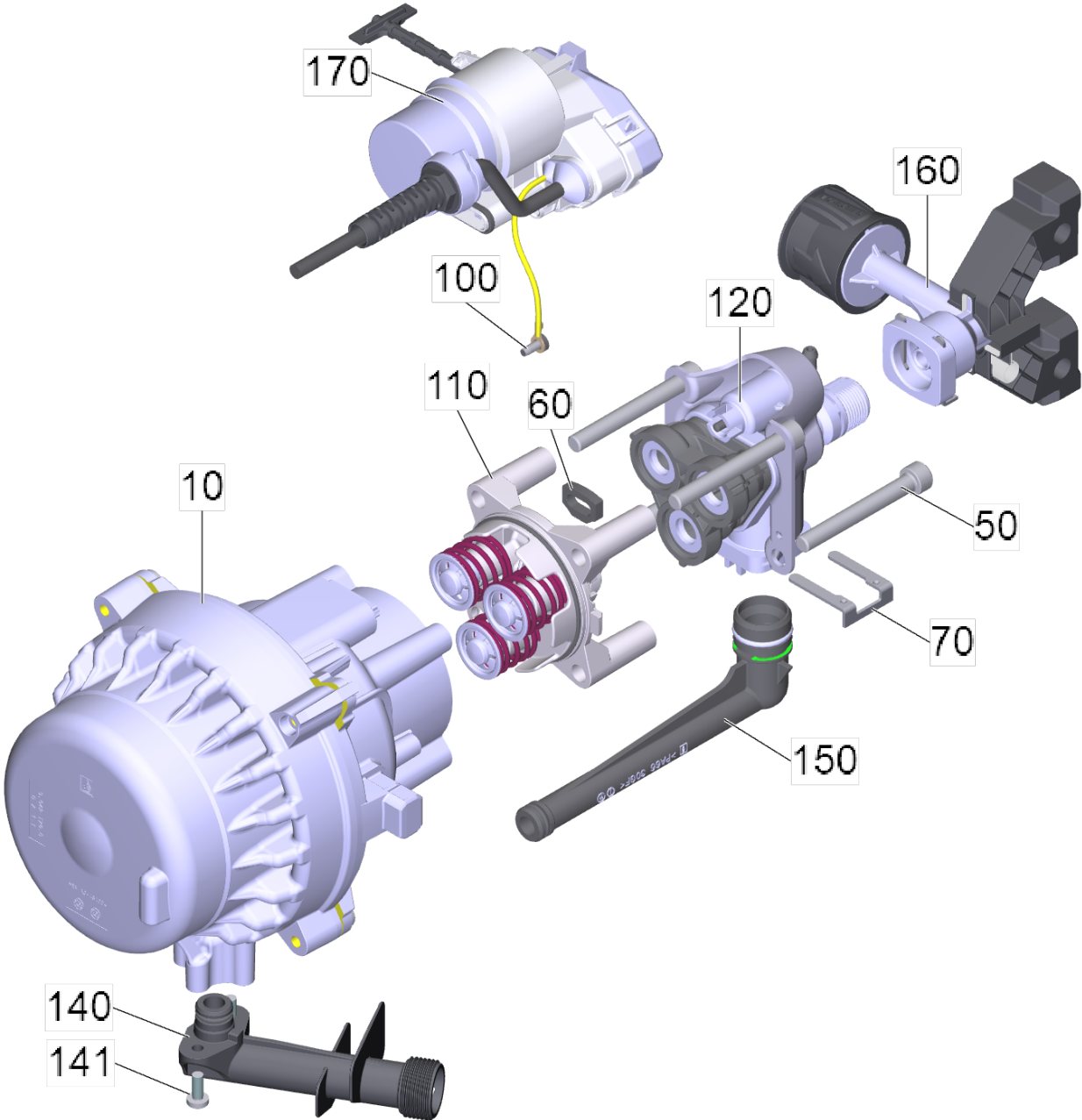


14 DB 145 rotor nozzle packaged (2.642-728.0)

---

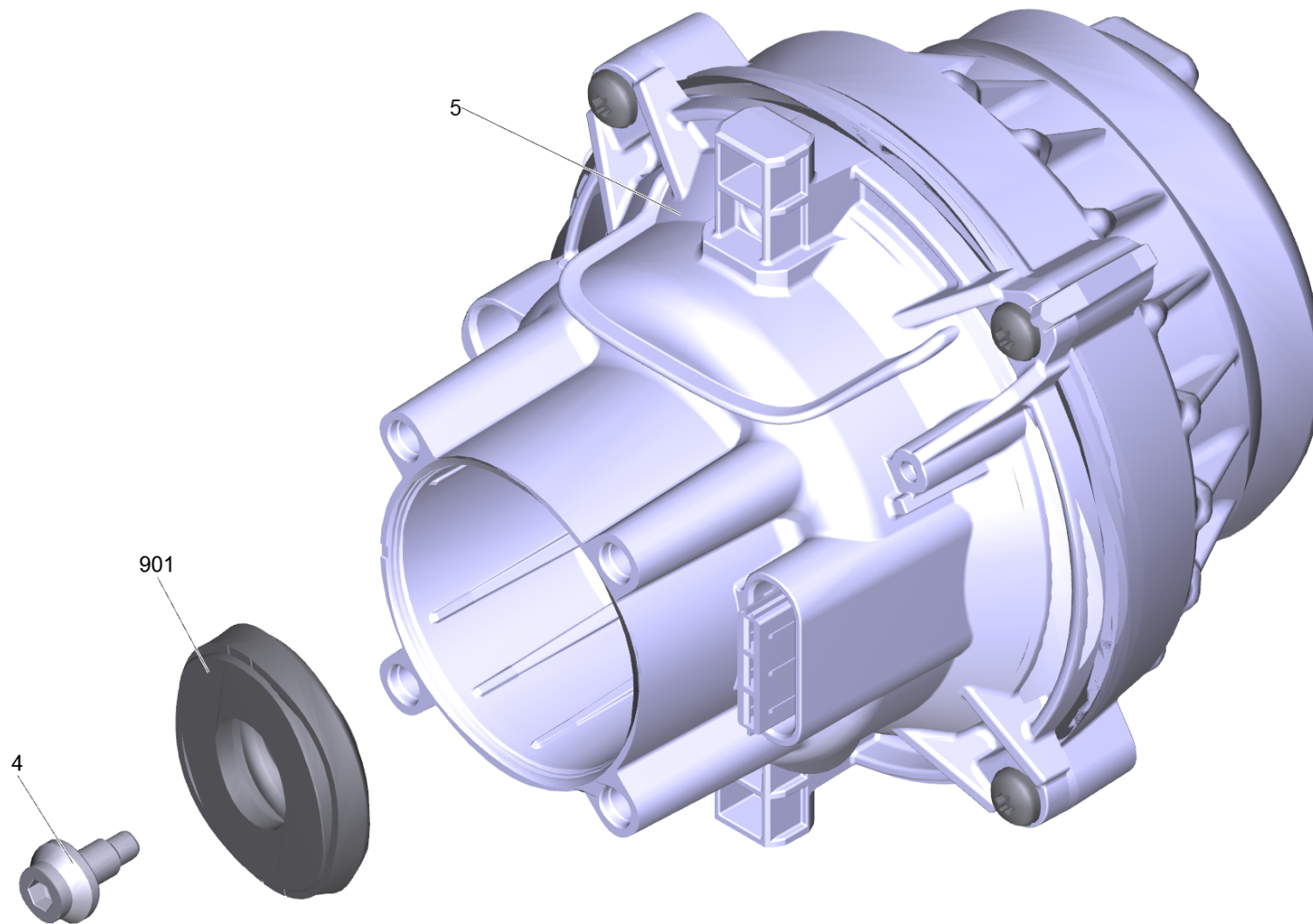
<b>POS</b>	<b>Article no.</b>	<b>Description</b>	<b>Quantity</b>	<b>Unit</b>
9500	2.640-729.0	O-Ring seal set	1	PC

---



109 Pump set cpl. K4 WCM

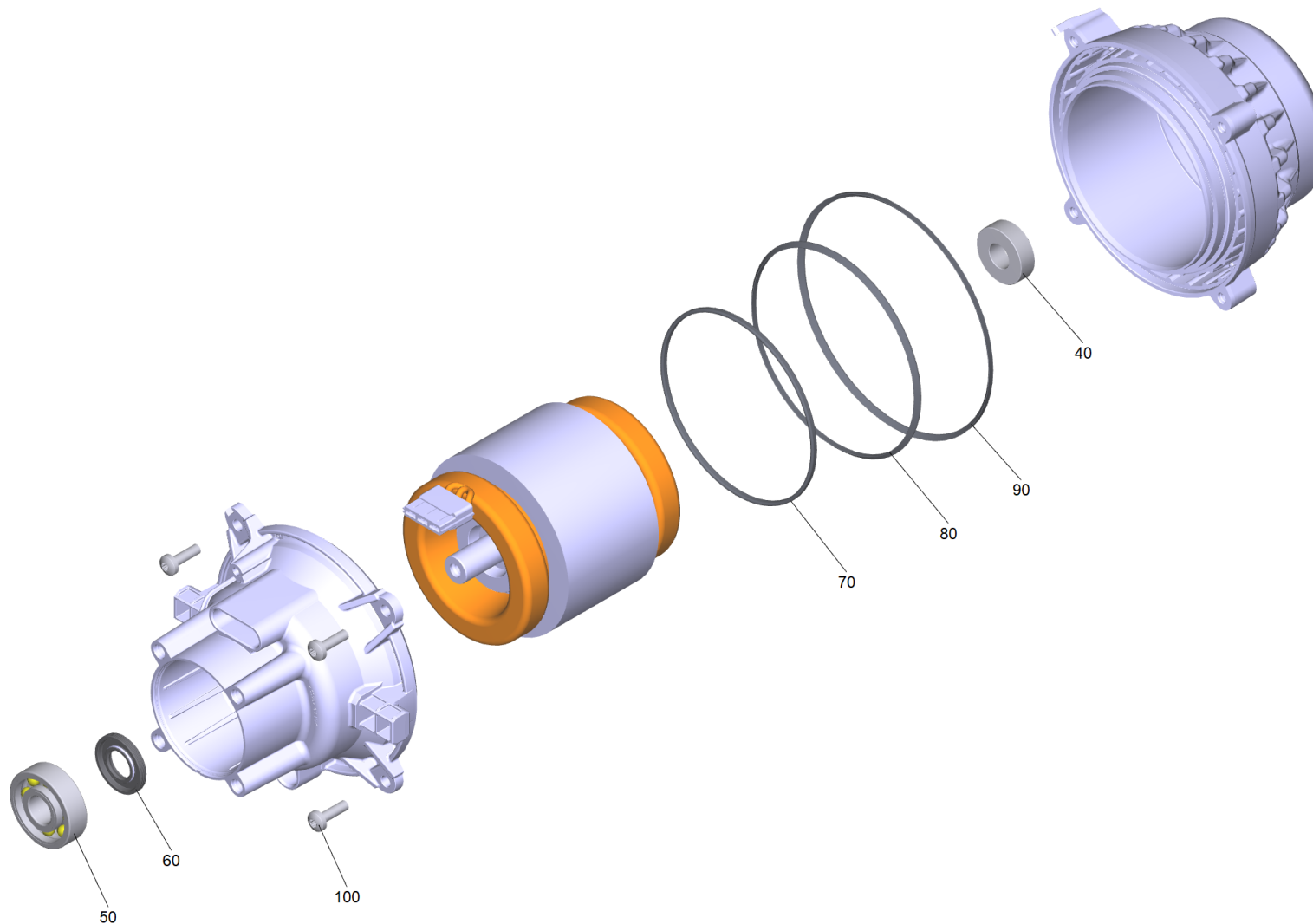
POS	Article no.	Description	Quantity	Unit
50	7.306-151.0	Cylinder head screw M8x65 -8.8-A2E ISO4	4	PC
170	9.013-929.3	Electrical box WCM SC ZE 30 uF	1	PC
150	9.001-749.0	High-pressure outlet complete	1	PC
70	9.039-148.0	Metal fork	1	PC
10	9.013-800.3	Motor cpl. for replacement H65 M1100 WCM 3.5	1	PC
160	9.002-412.0	outlet fitting K5 Al (spare)	1	PC
120		Pump WCM plastic (HR) new	1	PC
100	9.086-218.0	Screw M4X10 TORX T20 TAP-TITE THREAD	1	PC
141	7.306-394.0	Screw M5x12 -8.8-ZNBHL ISO 14583	2	PC
60	9.048-071.0	Spacer - Seal	1	PC
140	4.101-098.0	Suction connection with filter cpl.	1	PC
110	9.013-340.0	Thrust guidance complete	1	PC



10 Motor cpl. for replacement H65 M1100 WCM 3.5 (9.013-800.3)

---

POS	Article no.	Description	Quantity	Unit
5		Motor complete H65 M1100 WCM 3.5	1	PC
4	9.086-233.0	Screw wobble plate	1	PC
901	9.001-705.0	Wobble plate 10°24'	1	PC

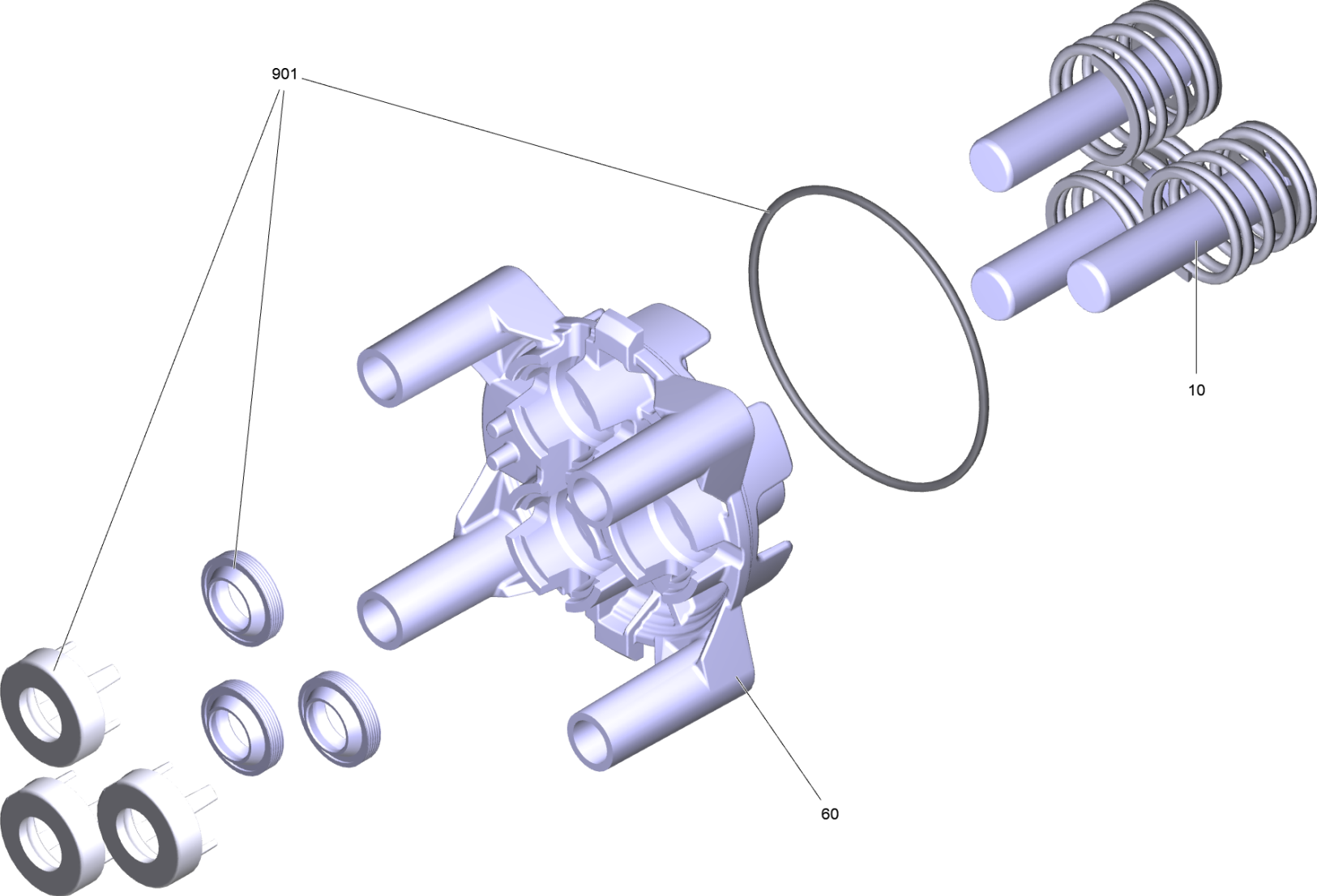


## 5 Motor complete H65 M1100 WCM 3.5

---

<b>POS</b>	<b>Article no.</b>	<b>Description</b>	<b>Quantity</b>	<b>Unit</b>
40	4.401-198.0	Ball bearing 6202-2RS -Wälzl.St DIN 625	1	PC
50	7.401-010.0	Ball bearing 6303 St DIN 625-1	1	PC
60	9.078-021.0	Grooved ring 17x35x5	1	PC
70	9.081-456.0	O-Ring seal 113x3 EPDM 70 Black	1	PC
80	9.081-457.0	O-Ring seal 124x3 EPDM 70 Black	1	PC
90	9.081-458.0	O-Ring seal 142.2x3 EPDM 70 Black	1	PC
100	7.306-092.0	Screw M6x20 -St-8.8-R3R (In6Rd)	1	PC

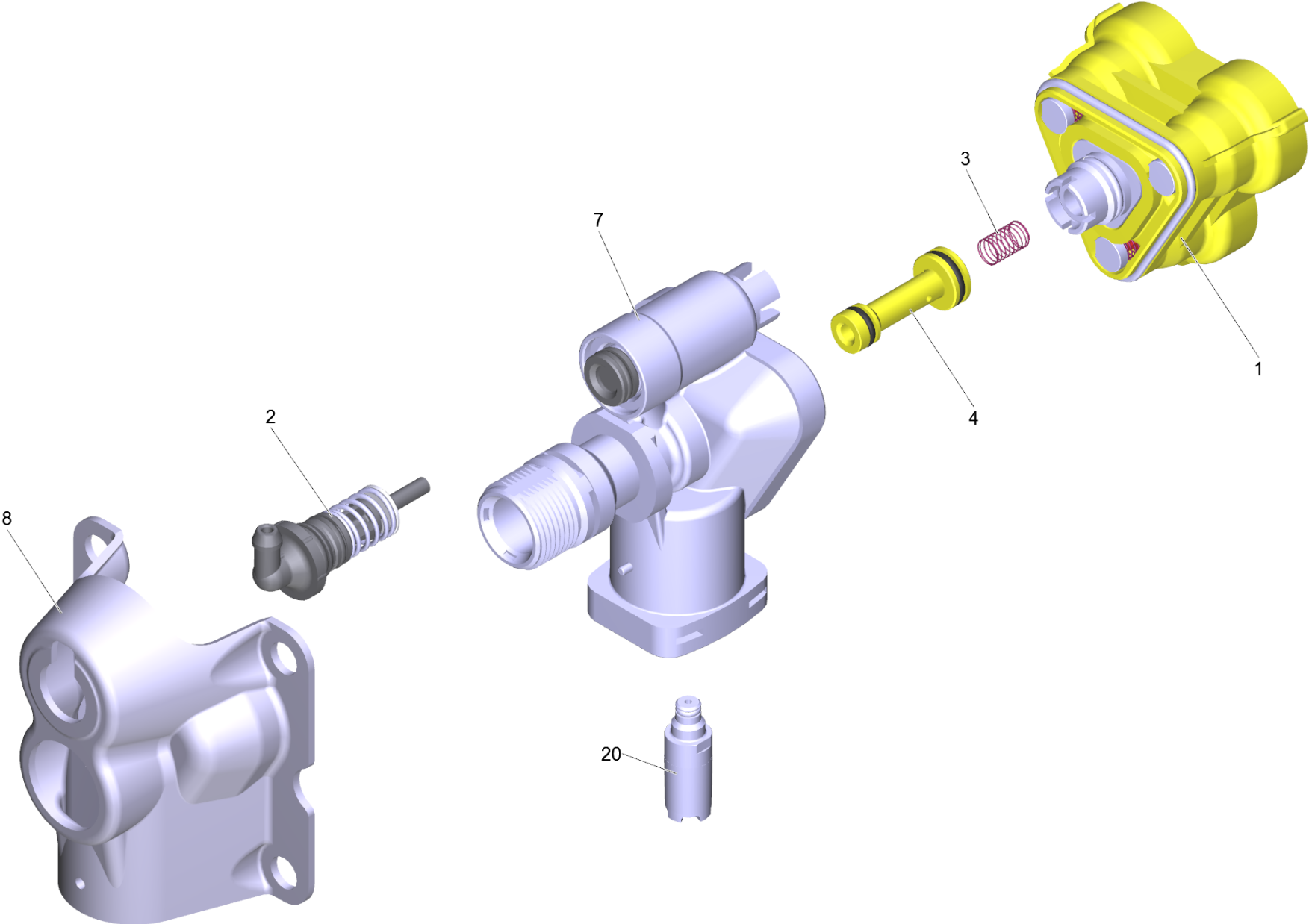




110 Thrust guidance complete (9.013-340.0)

---

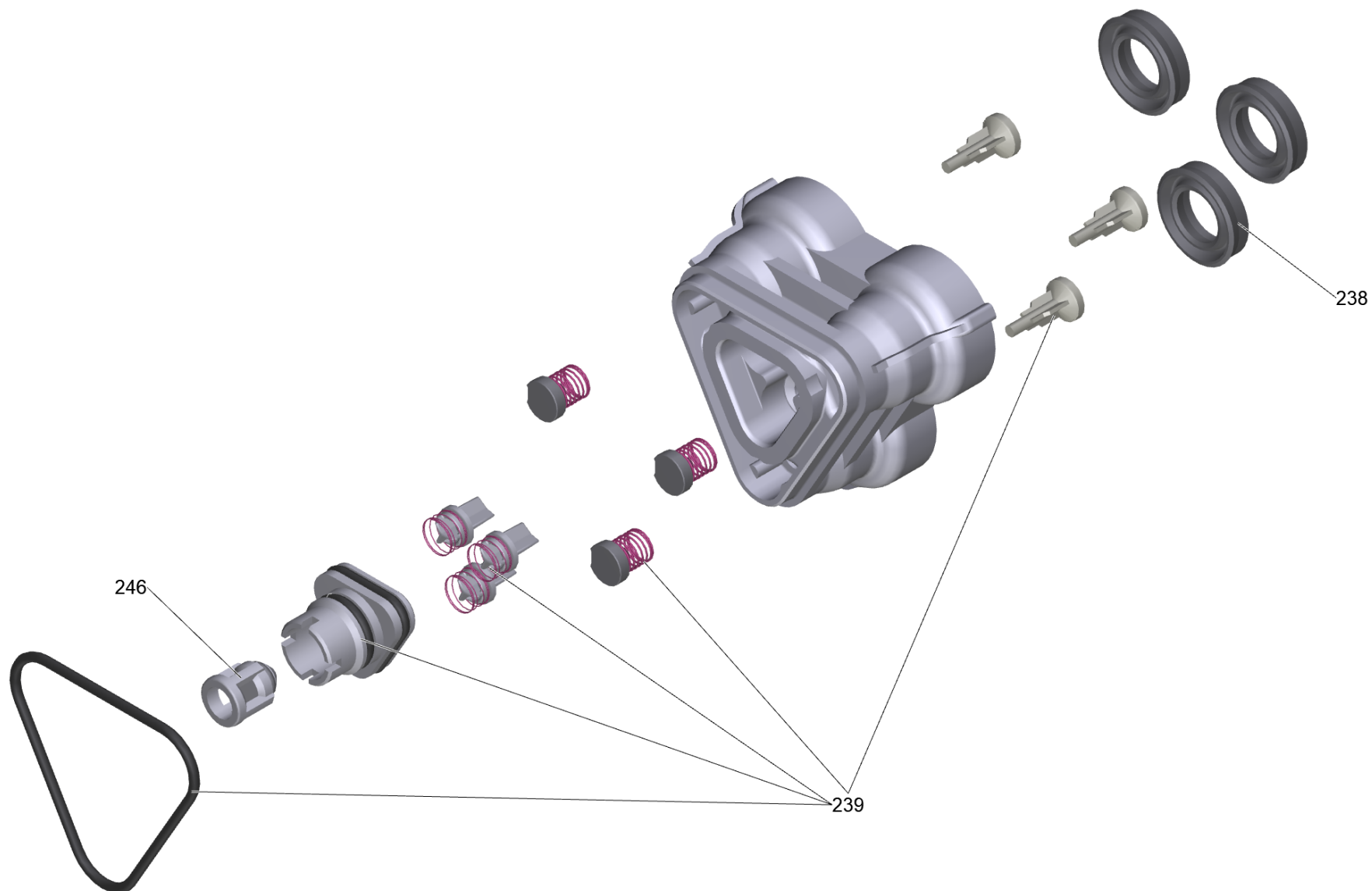
<b>POS</b>	<b>Article no.</b>	<b>Description</b>	<b>Quantity</b>	<b>Unit</b>
10	9.001-927.0	Piston complete	1	PC
901	4.100-832.0	Spare parts set seals	1	PC
60	9.042-149.0	Thrust guidance	1	PC



## 120 Pump WCM plastic (HR) new

---

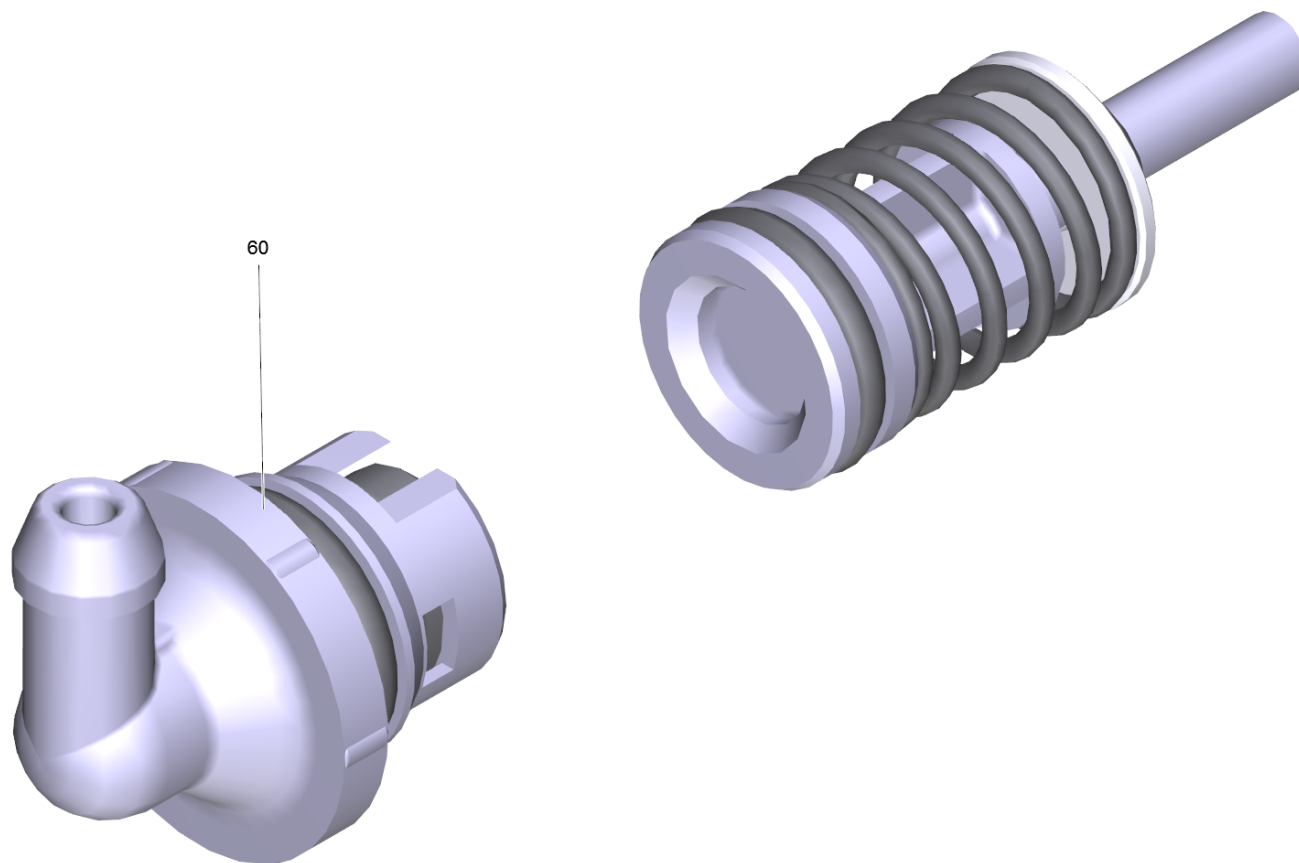
<b>POS</b>	<b>Article no.</b>	<b>Description</b>	<b>Quantity</b>	<b>Unit</b>
1	9.002-552.0	Head end WCM c/guarnizioni Tuico	1	PC
8	9.039-511.0	HR MANIFOLD flange	1	PC
7	9.002-029.0	manifold HR + pressure piston	1	PC
2	9.002-028.0	pressure piston HR (spare)	1	PC
20	4.580-801.3	Safety valve complete brown (SV5/R5)	1	PC
3	9.047-026.0	Spring	1	PC
4	9.002-017.0	Venturi nozzle D.1,45	1	PC



1 Head end WCM c/guarnizioni Tuico (9.002-552.0)

---

<b>POS</b>	<b>Article no.</b>	<b>Description</b>	<b>Quantity</b>	<b>Unit</b>
246	9.001-107.0	Cage complete	1	PC
238	4.100-832.0	Spare parts set seals	3	PC
239	4.100-830.0	Spare parts set valves	1	PC



2 pressure piston HR (spare) (9.002-028.0)

---

POS	Article no.	Description	Quantity	Unit
60	9.002-027.0	Rad. 90° control housing HR (ric)	1	PC

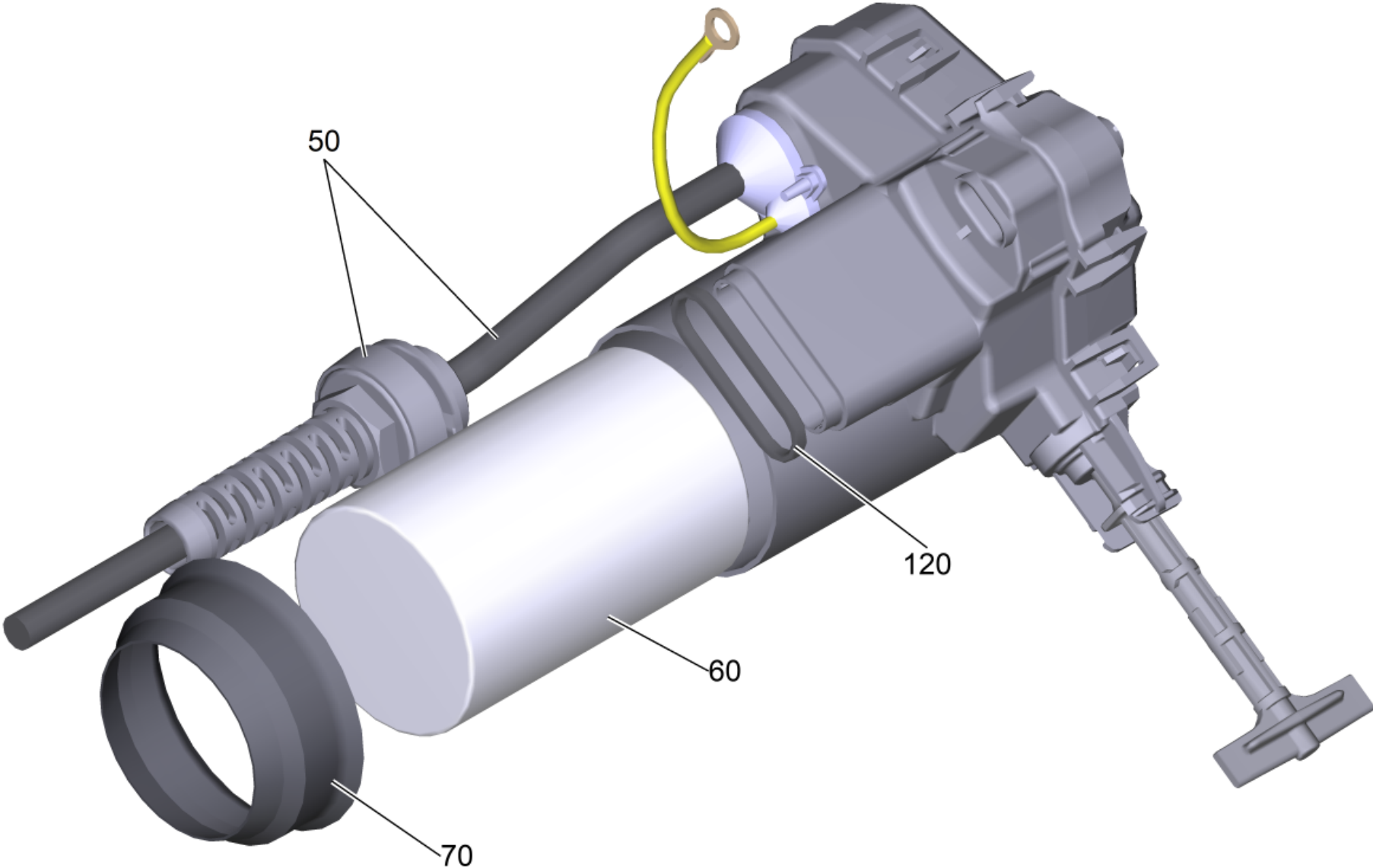


140 Suction connection with filter cpl. (4.101-098.0)

---

<b>POS</b>	<b>Article no.</b>	<b>Description</b>	<b>Quantity</b>	<b>Unit</b>
1	5.731-598.0	Fine filter long	1	PC

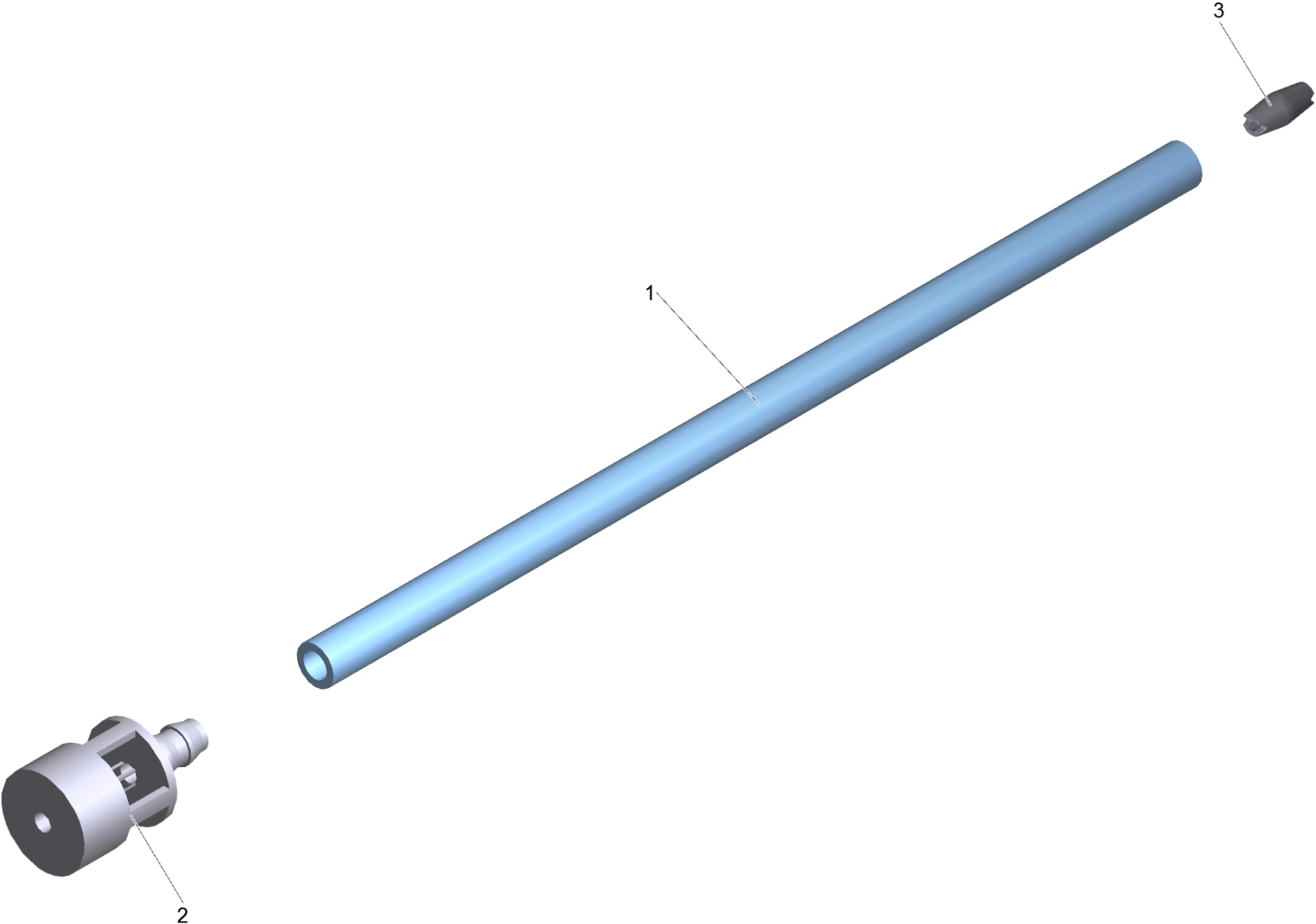
---



170 Electrical box WCM SC ZE 30 uF (9.013-929.3)

---

<b>POS</b>	<b>Article no.</b>	<b>Description</b>	<b>Quantity</b>	<b>Unit</b>
60	9.085-077.0	Capacitor 30μF	1	PC
70	9.080-465.0	Joint ring capacitor d.45, 70 Shore	1	PC
120	9.080-494.0	OR 20x2 EPDM70ShA PTFE	1	PC
50	9.084-369.3	Power cable 3G1 FC EU	1	PC



## 118 Hose Detergent Compact NCR

---

<b>POS</b>	<b>Article no.</b>	<b>Description</b>	<b>Quantity</b>	<b>Unit</b>
2	5.731-652.0	Filter with weight	1	PC
3	9.038-548.0	Flow reducer detergent	1	PC
1	6.388-216.0	Hose DN 5 (PVC)	0,75	m



902 H 9 Q high pressure hose Quick Connect (2.641-721.0)

---

<b>POS</b>	<b>Article no.</b>	<b>Description</b>	<b>Quantity</b>	<b>Unit</b>
999	2.640-729.0	O-Ring seal set	1	PC