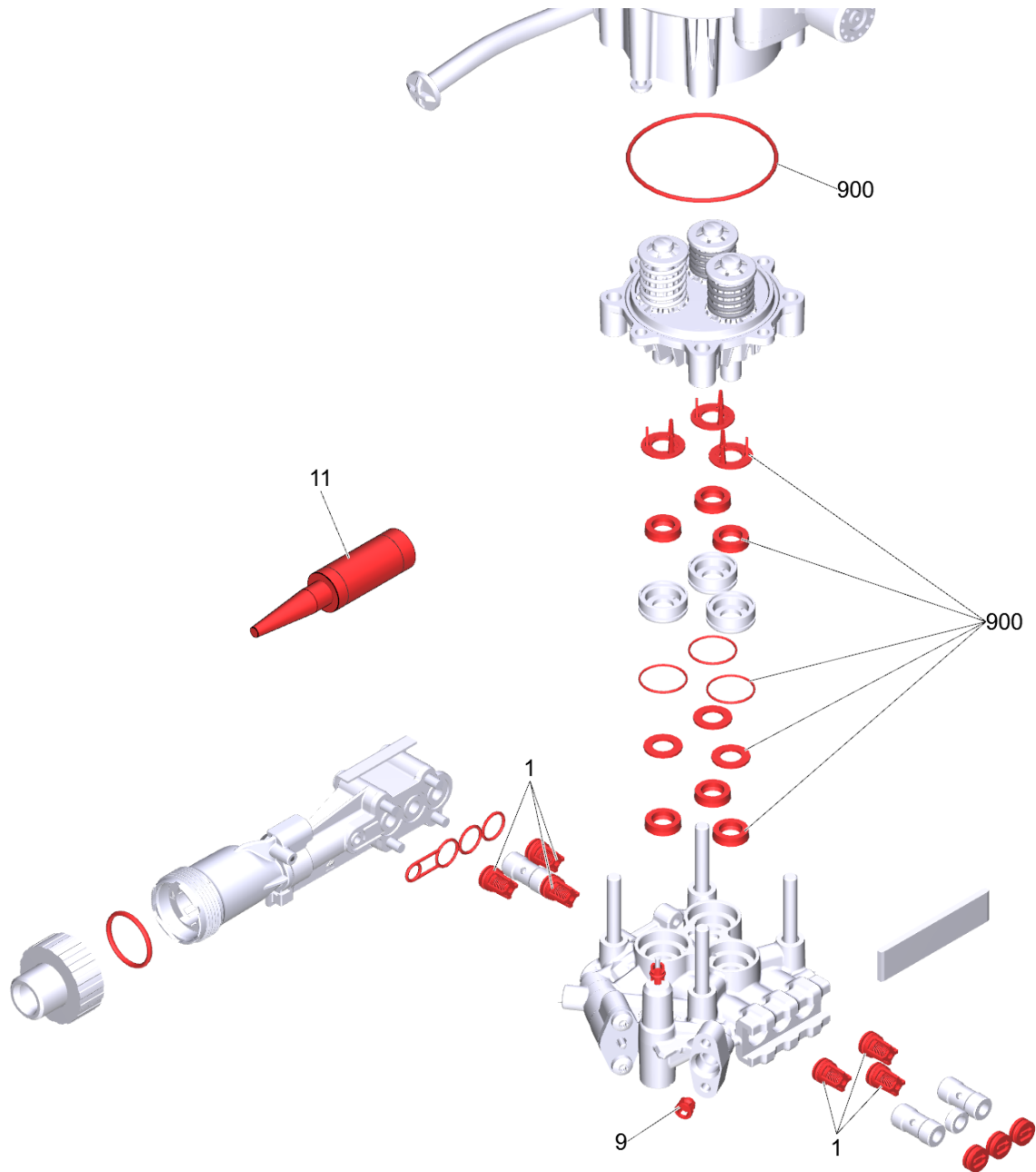


# 900 Pump set HD-M (2.883-069.0)

Professional \ High pressure cleaner cold water \ Electric motor \ HD 7/17 M \*EU-II \ Unit HD 7/17 M \*EU-II \ Pump set HD 7/17 M \*EU-II (D128) \ Pump set HD-M



## 900 Pump set HD-M (2.883-069.0)

Professional \ High pressure cleaner cold water \ Electric motor \ HD 7/17 M \*EU-II \ Unit HD 7/17 M \*EU-II \ Pump set HD 7/17 M \*EU-II (D128) \ Pump set HD-M



POS	Article no.	Description	Quantity	Unit
900	4.100-771.0	Set of gaskets	1.000	ST
11	6.288-072.0	Silicon grease	1.000	ST
1	2.884-916.0	Valve (3 Stück)	2.000	ST
9	4.584-022.0	Valve pin complete	1.000	ST