

**Rezerves daļu saraksts
(5.971-407.0) Spare parts list K7.XXX WCM**

DE HINWEISE

Weitere Sprachen:

Diese Ersatzteilliste ist in weiteren Sprachen erhältlich. Sie erhalten diese unter www.kaercher.com im Bereich Service. Die Schreibweise der Teilenummer, z.B. 75456380, entspricht der Teilenummer 7.545-638.0.

Mengenangaben:

Die Mengenangaben in der Ersatzteilliste entsprechen den in der Baugruppe verbauten Stückzahlen der Bauteile.

Meterware:

Ersatzteile welche als Meterware geliefert werden sind auf Einbaulänge selbst zu kürzen. Die Stückzahlen sind als Mindestbestellmenge =1m angegeben und müssen je nach Bedarf auf weitere volle Meterzahlen erhöht werden.

Versionen/ Werknummern:

Sind Versionen oder Werknummern in der Ersatzteilliste angegeben, ist anhand dieser vor Bestellung zu prüfen, welches Bauteil für ihr Gerät verwendet werden muss.

Lackierte Teile:

Bei Bestellungen von lackierten Teilen welche in der Ersatzteilliste nicht in verschiedenen Farben ausgewiesen sind, ist zusätzlich die Farbnummer oder Farbe mit anzugeben.

Technische Änderungen:

Technische Änderungen sowie das Recht der ausschließlichen Auswertung unseres geistigen Eigentums behalten wir uns vor.

EN INSTRUCTIONS

Other languages:

This list of spare parts is also available in other languages. You can get this list from www.kaercher.com in the Service division. The designation of the part number e.g. 75456380 is equal to 7.545-638.0.

Quantity details:

The quantity details in the spare parts list correspond to the number of pieces of the component installed in the assembly group.

Piece goods:

Spare parts that are sold as piece goods are to be cut to the desired length. The quantities have been indicated as minimum order quantity =1m and must be rounded off to the full meter figure depending on your requirements.

Version/ Plant numbers:

If version or plant numbers are mentioned in the spare parts list, then use the same to check before ordering which spare part needs to be used for your appliance.

Painted parts:

While ordering painted parts that are not mentioned in the spare parts list in their colour variations, please mention the colour number or the colour you require.

Technical changes:

We reserve the right to make technical changes as well as the right to exclusive use of our intellectual property.

FR REMARQUES

Autres langues:

Cette liste de pièces de rechange est disponible en autres langues. Cela est disponible sous www.kaercher.com dans le menu Service. La désignation du numéro de pièce, par ex. 75456380, correspond au numéro de pièce 7.545-638.0.

Indications de quantité:

Les indications de quantité dans la liste de pièces de rechange correspondre aux nombres de pièces des composant utilisées dans la construction.

Matériel au mètre:

Les pièces de rechange qui sont livrées au mètre doivent être raccourcies à longueur souhaitée par l'acheteur même. Les nombres des pièces sont indiquées en quantité de commande minimale = 1m et doivent être augmentés selon le besoin à une chiffre de mètre complète.

Versions/ Numéros d'usine:

Lorsqu'il sont indiquées des versions ou des numéros d'usine dans la liste de pièces de rechange, vous devez vérifier que composant doit être utilisé pour votre appareil.

Pièces laquées:

Pour commander des pièces laquées, où les différentes couleurs ne sont pas indiquées dans la liste des pièces de rechange, vous devez indiquer en plus le numéro de la couleur ou seulement la couleur.

Modifications techniques:

Nous nous réservons la possibilité des modifications techniques ainsi le droit d'exploitation exclusive de notre propriété intellectuelle.

IT AVVERTENZE

Altre lingue:

Il presente elenco di parti di ricambio è disponibile sul nostro sito Web anche in altre lingue: sotto www.kaercher.com alla voce "Service".

L'indicazione del codice pezzo, ad es. 75456380, corrisponde al codice pezzo 7.545-638.0

Indicazioni di quantità:

Le indicazioni di quantità riportate dall'elenco "parti di ricambio" corrispondono al numero delle singole componenti contenute nella rispettiva unità.

Merce a metro:

Le parti di ricambio fornite come "merce a metro" devono venire in seguito accorciate alla lunghezza necessaria per il montaggio. La quantità unitaria è indicata come "quantità minima di ordinazione = 1m" e deve all'occorrenza venire moltiplicata per il numero intero di metri necessari.

Versioni / Numeri di fabbricazione:

Quando l'elenco "parti di ricambio" riporta diverse versioni o numeri di fabbricazione, confrontare la versione o il numero di fabbricazione del ricambio desiderato con quelle/i presenti nell'elenco e indicarla/o al momento dell'ordinazione.

Parti di ricambio verniciate:

Nel caso di ricambi verniciati, se l'elenco parti di ricambio non ne riporta espressamente i diversi colori, al momento dell'ordinazione è necessario indicare anche il colore o il numero del colore desiderato.

Modifiche tecniche:

Ci riserviamo il diritto di apportare modifiche tecniche così come il diritto di utilizzo esclusivo della nostra proprietà intellettuale.

ES INDICACIONES

Otros idiomas:

La lista de piezas de repuesto se puede adquirir en otros idiomas. La puede adquirir en www.kaercher.com en el área de servicios.

La notación de los números de las piezas, p.ej. 75456380 corresponde al número de pieza 7.545-638.0.

Cantidades:

Las indicaciones de cantidades de la lista de piezas de repuesto corresponden al número de piezas montadas en el componente.

Mercancía por metros:

Las piezas de repuesto que se suministran por metros se pueden cortar al largo deseado. La unidad mínima de pedido es de = 1 m y el número de metros completos se puede aumentar según necesidad.

Versiones/números de fábrica:

Si se indica la versión o número de fábrica en la lista de piezas de repuesto, se debe comprobar en ella la pieza a usar para su aparato antes de realizar el pedido.

Piezas lacadas:

Al realizar pedidos de piezas lacadas que no estén indicadas en los diferentes colores en la lista de piezas de repuesto, se debe indicar también la referencia del color o el color.

Modificaciones técnicas:

Reservados los derechos de realizar modificaciones técnicas y aprovechar nuestra propiedad intelectual.

PL WSKAZÓWKI

Pozostałe języki:

Ta lista części zamiennych jest dostępna w także w innych językach. Mogą ją Państwo pobrać ze strony www.kaercher.com w dziale Serwis.

Sposób zapisywania numeru części, np. 75456380, odpowiada numerowi części 7.545-638.0.

Dane ilości:

Dane ilości podane w liście części zamiennych odpowiadają liczbie sztuk podzespołów tworzących dany moduł.

Towar sprzedawany na metry:

Części zamienne dostarczane jako towar sprzedawany na metry po zamontowaniu należy samodzielnie skrócić do potrzebnej długości. Liczba sztuk podana jest jako minimalna ilość zamówienia = 1m i w zależności od potrzeb zwiększa się ją o kolejne pełne metry.

Wersje/ Numer zakładu:

Jeżeli w liście części zamiennych podane są wersje lub numery zakładu, przed zamówieniem na ich podstawie należy sprawdzić, który podzespół stosuje się w Państwa urządzeniu.

Części lakierowane:

W przypadku zamówień części lakierowanych, które w liście części zamiennych nie podano w wielu kolorach, należy dodatkowo zaznaczyć nr koloru lub kolor.

Zmiany techniczne:

Zastrzegamy sobie prawo do zmian technicznych oraz wyłącznego wykorzystywania naszej własności intelektualnej.

RU УКАЗАНИЯ:

Другие языки:

Данный список запасных частей также доступен на других языках. Вы найдете его на сайте www.kaercher.com в разделе Service
Маркировка номера детали, например, 75456380, соответствует номеру детали 7.545-638.0.

Указание количества:

Количественные данные в списке запасных частей соответствуют числу компонентов, входящих в состав узлов.

Товар, продаваемый на метры:

Запасные части, продающиеся на метры, необходимо обрезать до нужной длины. Число изделий указано в виде минимального объема заказа = 1м и их количество можно округлить до требуемого по мере необходимости.

Варианты исполнения/заводские номера:

Если варианты исполнения или заводские номера указаны в списке запасных частей, то перед заказом необходимо проверить, какая деталь подходит для вашего устройства.

Лакированные детали:

При заказе лакированных деталей, варианты расцветки которых не указаны в списке запасных частей, необходимо дополнительно указать номер цвета или необходимый для вас цвет.

Технические изменения:

Мы оставляем за собой право на технические изменения, а также право на исключительное использование нашей интеллектуальной собственности.

Spare parts list K7.XXX WCM (5.971-407.0)	6
10 Housing.....	7
11 Housing front.....	8
12 Housing rear.....	10
11 Wheel set replacement 250 Hummer (4.515-288.0).....	12
13 Hose reel.....	14
5 Spare parts set hollow shaft (2.885-187.0).....	16
9 Spare parts set hose reel (2.885-188.0).....	18
12 High pressure hose 16/1,03 60°C (6.392-390.0).....	20
20 Pump set.....	22
21 Cylinder head.....	23
1 Spare parts set excess-current (2.885-186.0).....	26
10 Cylinder head complete brass (4.550-942.0).....	28
17 Valve pin complete (4.584-022.0).....	30
19 Nozzle insert only for replacement (4.769-034.0).....	33
19 Nozzle insert (4.769-035.0).....	35
22 Plug complete (4.580-702.0).....	38
22 Piston guidance.....	41
30 Motor.....	43
31 Motor.....	44
32 Motor.....	46
7 Motor for replacement 2,5KW (4.624-171.0).....	49
33 Motor.....	51
40 Accessories.....	53
41 Hand trigger gun.....	54
0 G 160 Q pistol Quick Connect (2.642-172.0).....	56
42 Jet pipe.....	58
3 Dirt blaster 0295 St (4.764-211.0).....	60
4 VPS K5 0287 (4.760-527.0).....	62
43 Foam nozzle.....	64
44 Power Brush.....	66
45 Surface cleaner.....	68
46 T 450 T-Racer surface cleaner.....	70
1 Single-step jet pipe extension (2.643-240.0).....	72
3 Spare parts rotor complete (2.885-406.0).....	74
5 Rotor complete.....	76
4 Bearing support completely T 400.....	78
1 Adapter complete.....	80
2 Spare parts nozzles T-Racer (2.643-338.0).....	82
5 Spare parts nozzles T-Racer (2.643-338.0).....	84
50 Electric box.....	86

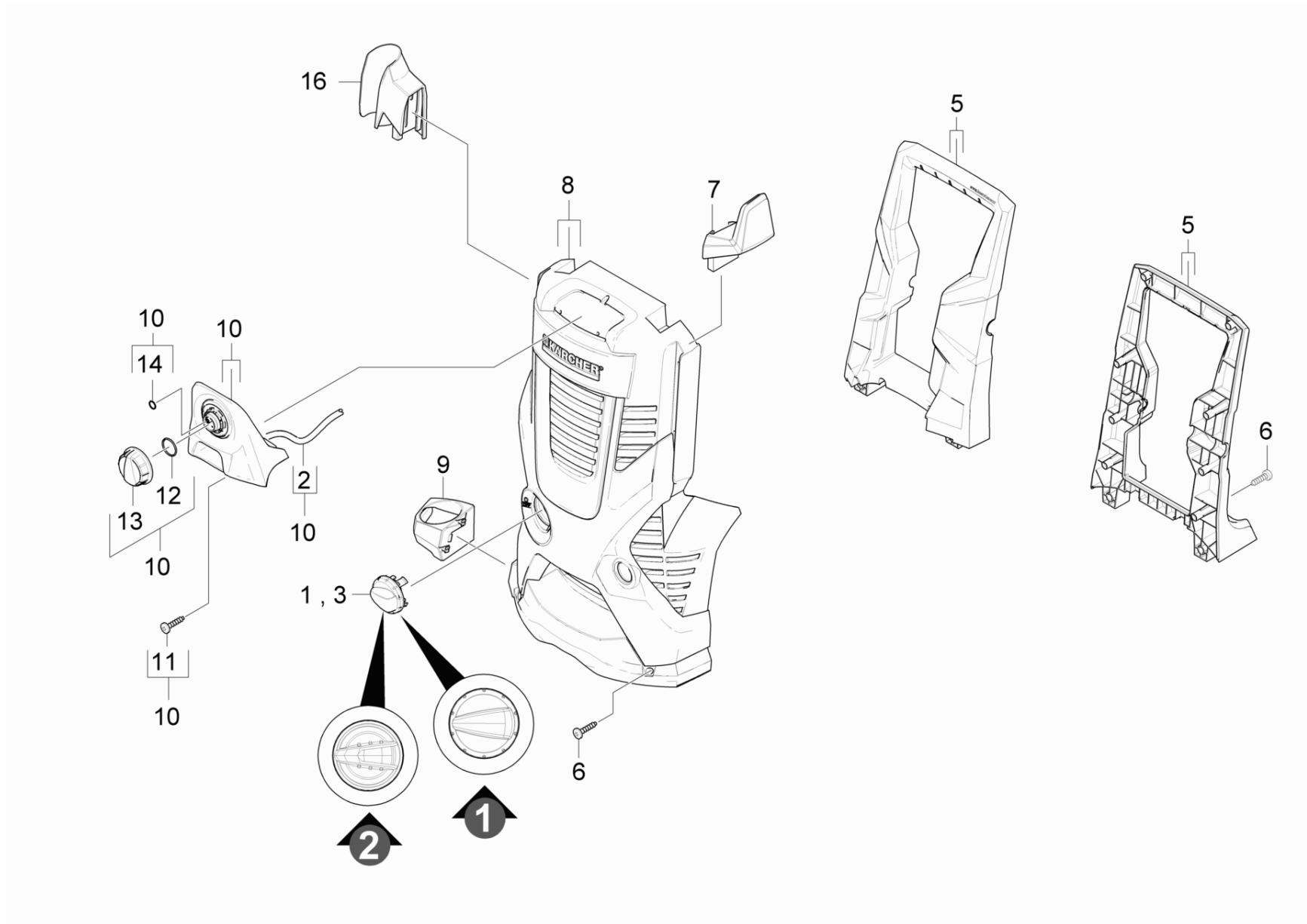
Spare parts list K7.XXX WCM (5.971-407.0)

Pos	Name	Qty.	Unit
10	Housing	1.000	ST
20	Pump set	1.000	ST
30	Motor	1.000	ST
40	Accessories	1.000	ST
50	Electric box	1.000	ST

10 Housing

Pos	Name	Qty.	Unit
11	Housing front	1.000	ST
12	Housing rear	1.000	ST
13	Hose reel	1.000	ST

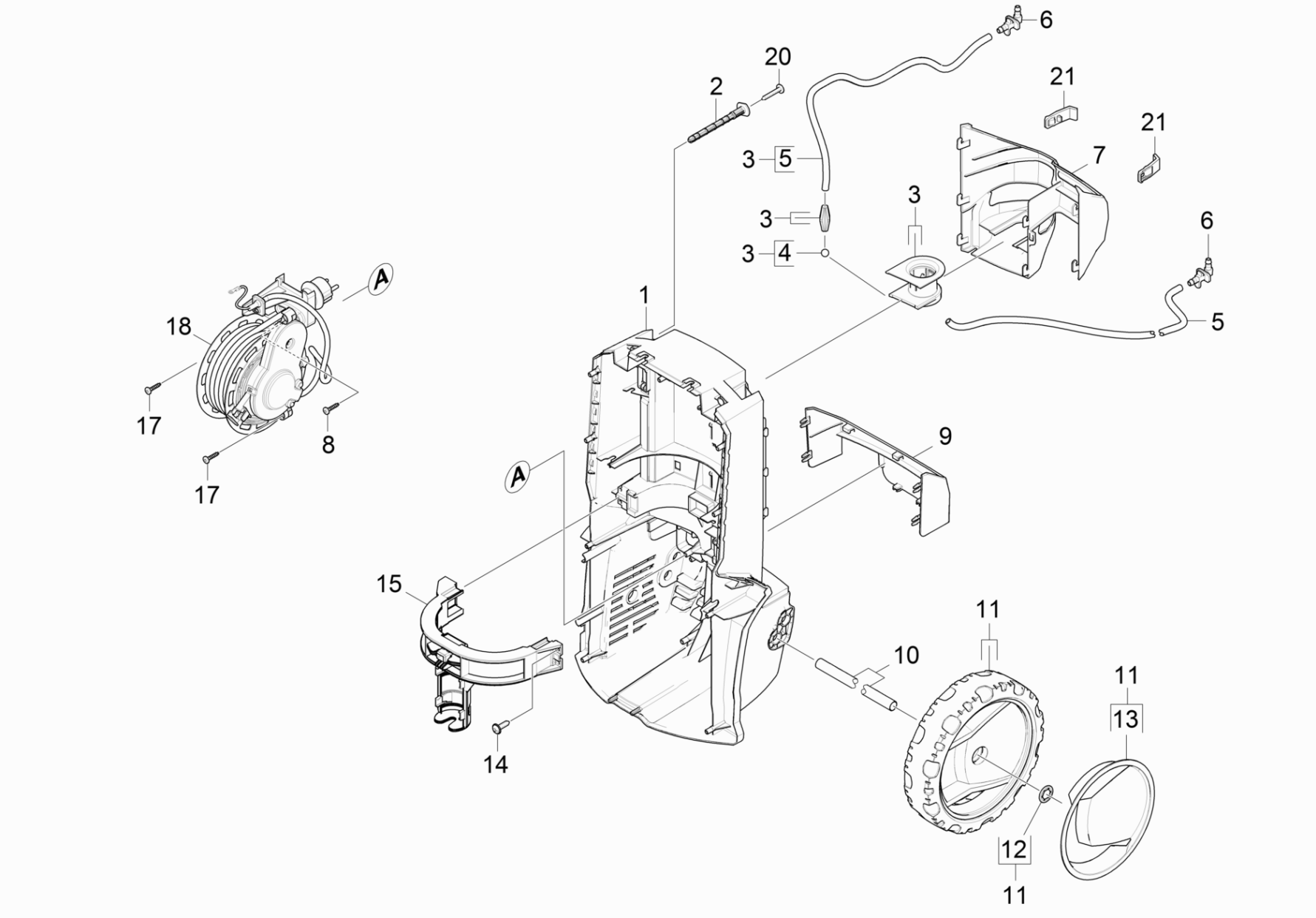
11 Housing front



11 Housing front

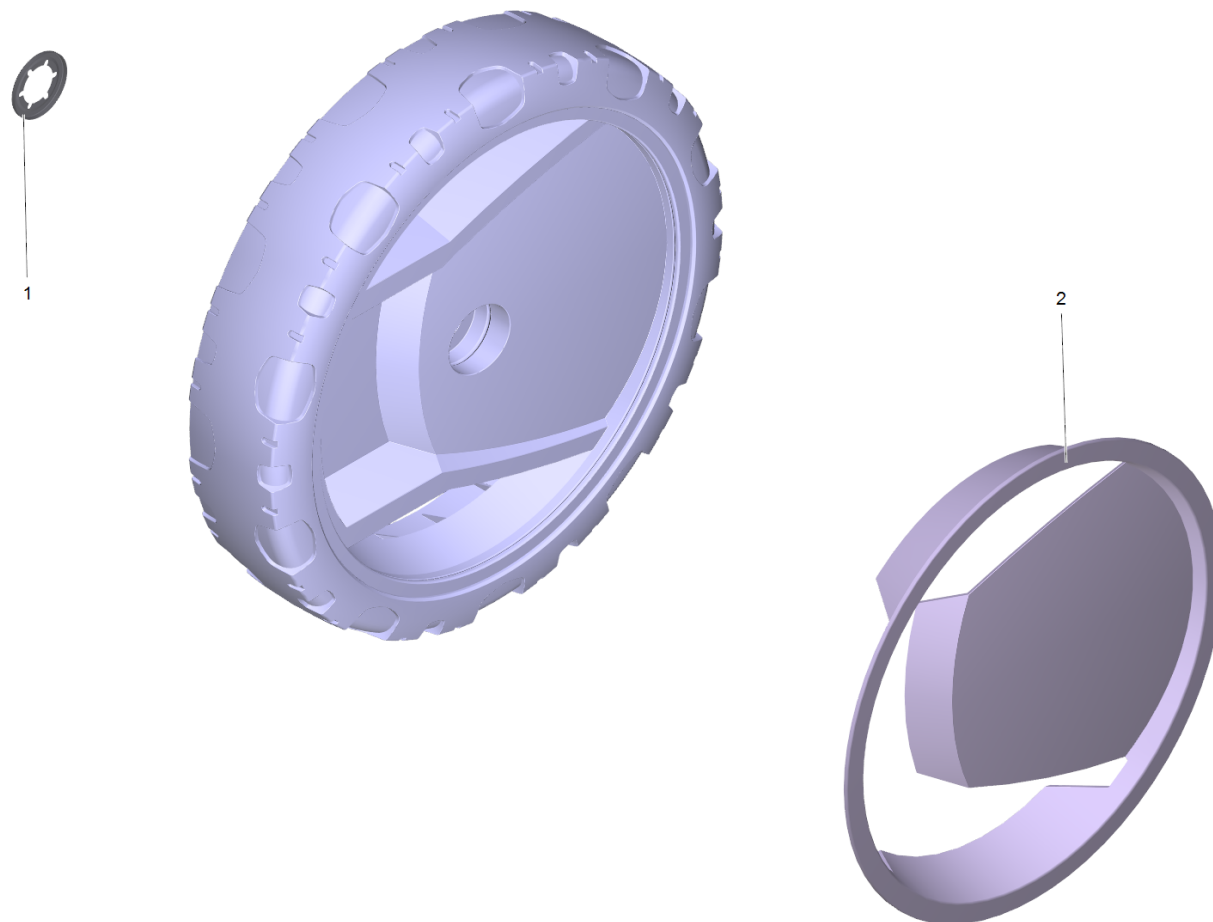
ET/VT (spare/wear parts)	Pos	Material #	Name	Qty.	Unit	Footnote text
X	1	9.037-693.0	Handhold switch	1.000	ST	VERSION 1
	2	6.390-426.0	Hose DN 5	1.000	M	TO ORDER AS CUT GOODS
	3	9.048-123.0	OVER INJ 2K KNOB	1.000	ST	VERSION 2
X	5	4.321-982.0	Handhold front rear	1.000	ST	
	6	6.303-150.0	Screw 4,2x 22	15.000	ST	
X-X	7	9.037-622.0	Catch for cable	1.000	ST	
	8	2.885-193.0	Spare parts set cover Top	1.000	ST	
X-X	9	9.037-619.0	Holder pistol bottom	1.000	ST	
X-X	10	2.885-282.0	Spare parts set hook hose	1.000	ST	
X	11	9.086-203.0	Screw 4x22	2.000	ST	
	12	6.362-522.0	O-Ring seal 24,0 X 2,0	1.000	ST	
	13	9.037-621.0	Handhold chemistry	1.000	ST	
	14	6.363-018.0	O-Ring seal 4X2	1.000	ST	
X-X	16	9.037-618.0	Holder pistol above	1.000	ST	

12 Housing rear



12 Housing rear

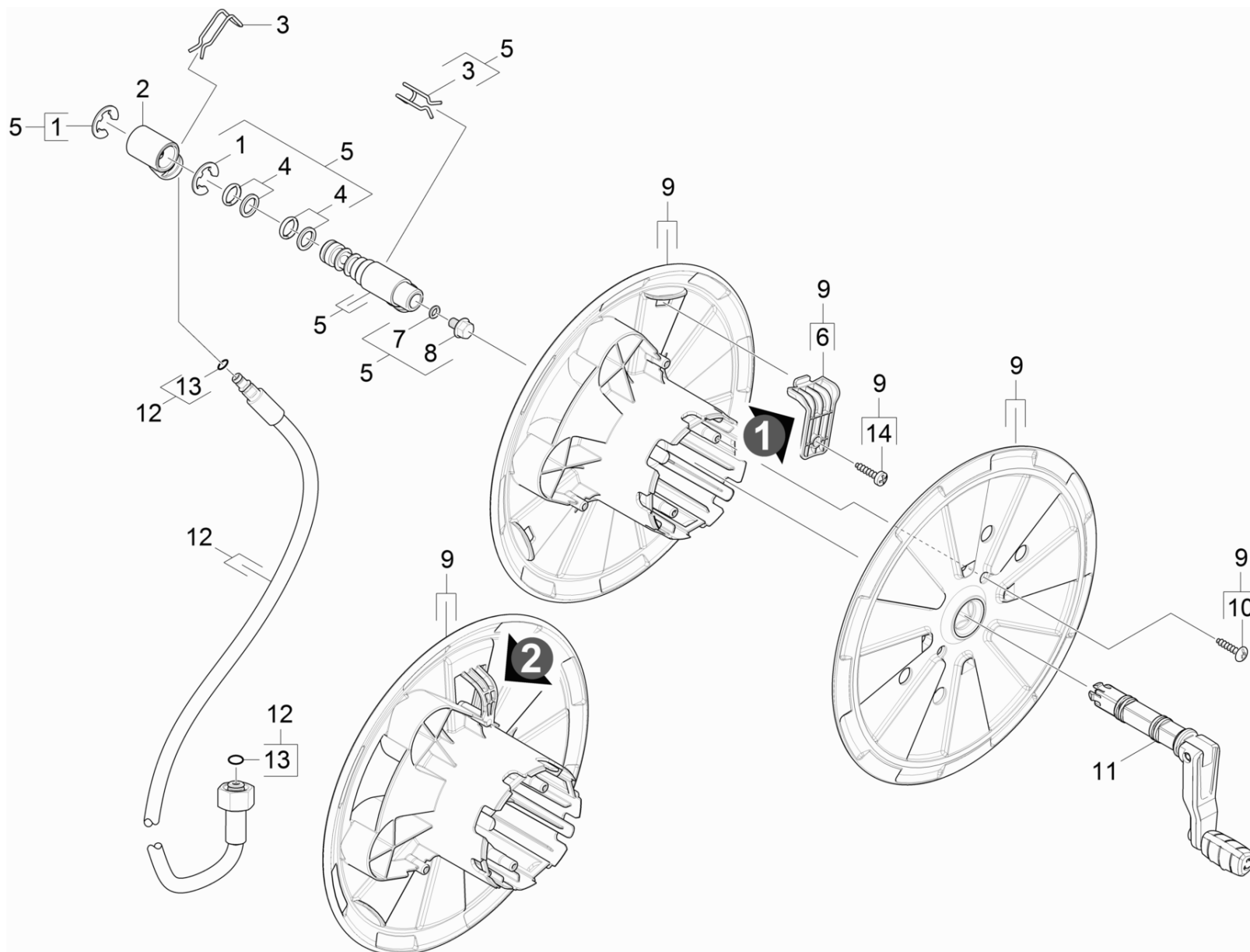
ET/VT (spare/wear parts)	Pos	Material #	Name	Qty.	Unit	Footnote text
	1	5.033-543.0	Chassis rear	1.000	ST	
Position text: 1.168-600.0						
	1	5.033-700.0	Chassis rear closed	1.000	ST	
Position text: 1.168-601.0 /-602.0 /-603.0 /-604.0 /-605.0 /-607.0 /-608.0 /-609.0 /-610.0						
X-X	2	5.317-352.0	Bolt	2.000	ST	
X-X	3	4.321-256.0	RM adapter	1.000	ST	
X-X	4	7.401-911.0	Sphere 4 -PP DIN 5401	1.000	ST	
	5	6.390-426.0	Hose DN 5	2.000	M	TO ORDER AS CUT GOODS
	6	9.037-861.0	Nipple 90° Mod.Range	2.000	ST	
X-X	7	5.321-960.0	Holder accessories above	1.000	ST	
	8	6.303-199.0	Oval head screw 4,2x 16	1.000	ST	
X	9	5.321-959.0	Holder accessories bottom	1.000	ST	
	10	5.105-646.0	Axle L=325	1.000	ST	
	11	4.515-288.0	Wheel set replacement 250 Hummer	1.000	ST	SET OF 2 PIECES
X-X	12	6.343-168.0	Lock washer	2.000	ST	
	13	4.515-296.0	Screen for replacement 250 Hummer	1.000	ST	SET OF 2 PIECES
	14	6.303-200.0	Screw 5x25-IN6RD	4.000	ST	
	15	5.321-961.0	Retaining bracket fixing	1.000	ST	
	17	6.303-125.0	Screw 5x20-Sonder In6Rd+Spitze	2.000	ST	
Position text: 1.168-600.0						
	18	6.969-000.0	Cable drum V2V2 1,5-5m *EU	1.000	ST	
Position text: 1.168-600.0						
X	20	9.086-203.0	Screw 4x22	2.000	ST	
	21	5.052-081.0	Clamp	2.000	ST	



11 Wheel set replacement 250 Hummer (4.515-288.0)

ET/VT (spare/wear parts)	Pos	Material #	Name	Qty.	Unit	Footnote text
X-X	1	6.343-168.0	Lock washer	2.000	ST	
	2	4.515-296.0	Screen for replacement 250 Hummer	1.000	ST	SET OF 2 PIECES

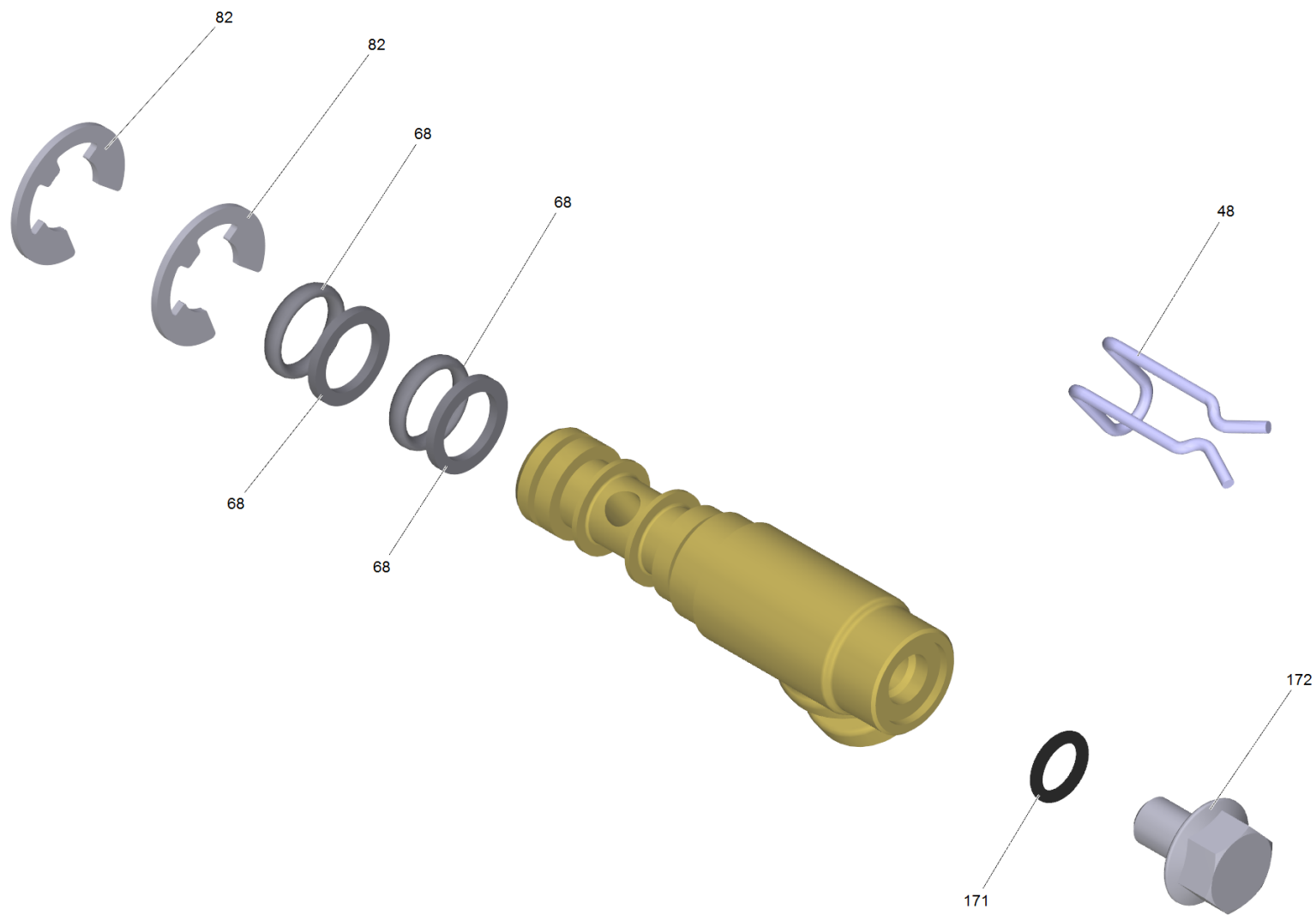
13 Hose reel



13 Hose reel

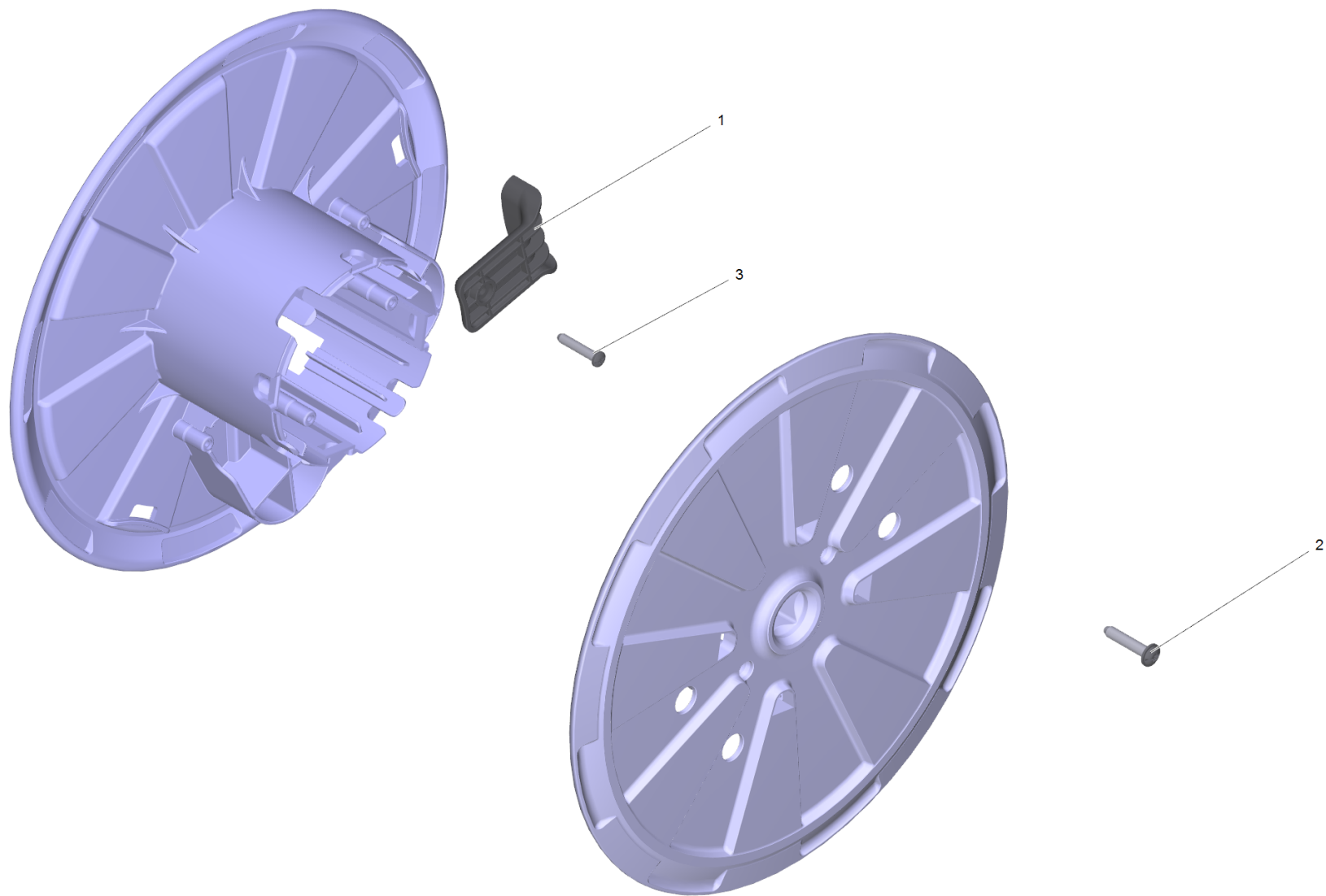
ET/VT (spare/wear parts)	Pos	Material #	Name	Qty.	Unit
	1	7.343-306.0	Lock washer 12-St-A2E DIN 6799	2.000	ST
	2	5.443-603.0	Rotary bushing	1.000	ST
X-X	3	5.037-221.0	Clamp	2.000	ST
	4	6.363-027.0	O-Ring seal complete 1ST.-R.	2.000	ST
	5	2.885-187.0	Spare parts set hollow shaft	1.000	ST
	6	5.481-413.0	Clamp hose HD	1.000	ST
	7	6.362-101.0	O-Ring seal 8 X 2	1.000	ST
	8	7.304-027.0	Hexagonal head screw M8x12-8.8-P2E EN 1	1.000	ST
X	9	2.885-188.0	Spare parts set hose reel	1.000	ST
	10	7.303-096.0	Screw 4x22 -ST-10.9-R2R (IN6RD)	2.000	ST
X-X	11	4.776-053.0	Crank complete	1.000	ST
X-X	12	6.392-390.0	High pressure hose 16/1,03 60°C	1.000	ST
X-X	13	2.640-729.0	O-Ring seal set	1.000	ST
X	14	9.086-203.0	Screw 4x22	2.000	ST

5 Spare parts set hollow shaft (2.885-187.0)



5 Spare parts set hollow shaft (2.885-187.0)

ET/VT (spare/wear parts)	Pos	Material #	Name	Qty.	Unit
X-X	48	5.037-221.0	Clamp	2.000	ST
	68	6.363-628.0	O-Ring seal complete	2.000	ST
	82	7.343-306.0	Lock washer 12-St-A2E DIN 6799	2.000	ST
	171	6.362-101.0	O-Ring seal 8 X 2	1.000	ST
	172	7.304-027.0	Hexagonal head screw M8x12-8.8-P2E EN 1	1.000	ST



9 Spare parts set hose reel (2.885-188.0)

ET/VT (spare/wear parts)	Pos	Material #	Name	Qty.	Unit
	1	5.481-413.0	Clamp hose HD	1.000	ST
	2	7.303-096.0	Screw 4x22 -ST-10.9-R2R (IN6RD)	2.000	ST
X	3	9.086-203.0	Screw 4x22	2.000	ST



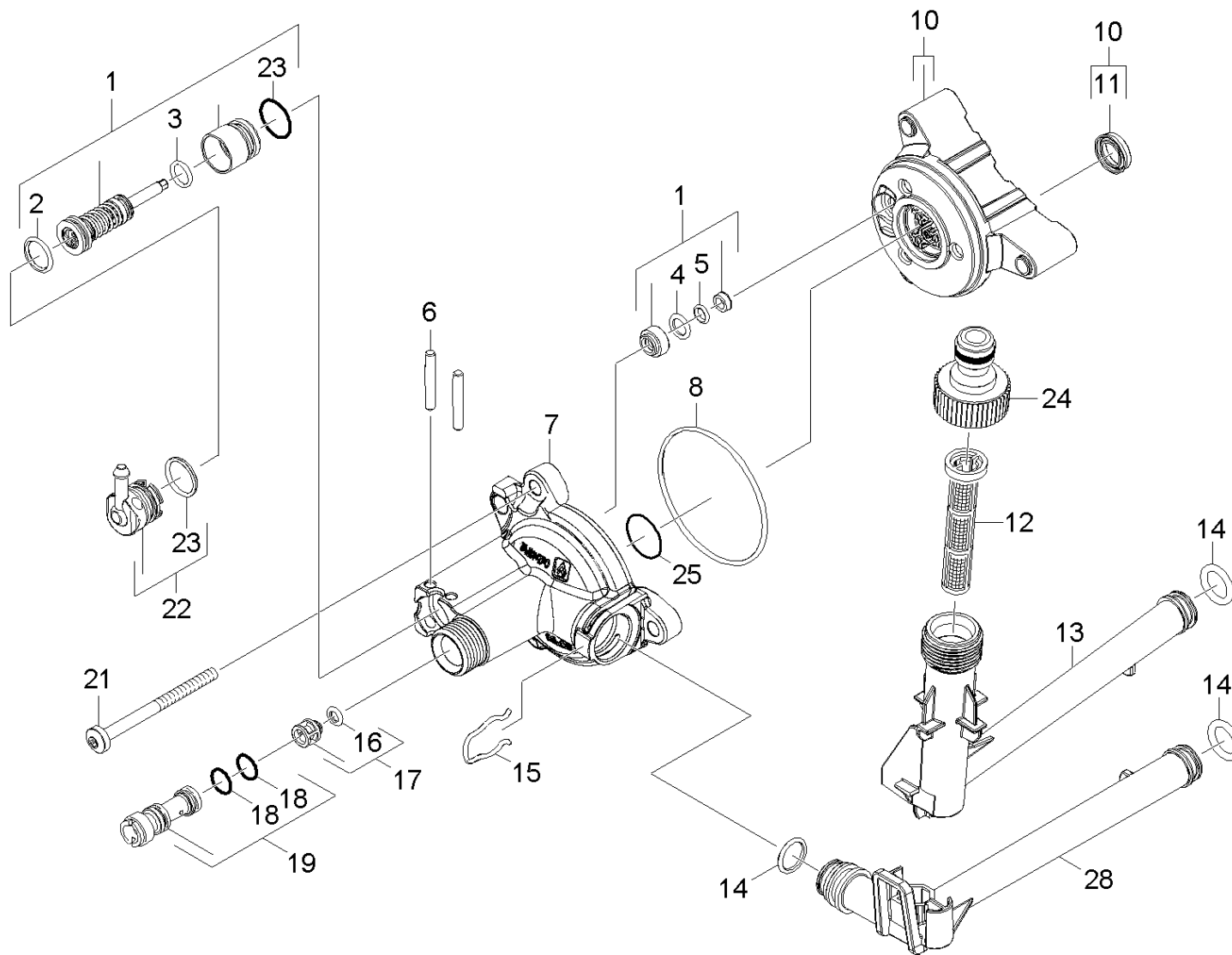
12 High pressure hose 16/1,03 60°C (6.392-390.0)

ET/VT (spare/wear parts)	Pos	Material #	Name	Qty.	Unit
X-X	1	2.640-729.0	O-Ring seal set	1.000	ST

20 Pump set

Pos	Name	Qty.	Unit
21	Cylinder head	1.000	ST
22	Piston guidance	1.000	ST

21 Cylinder head

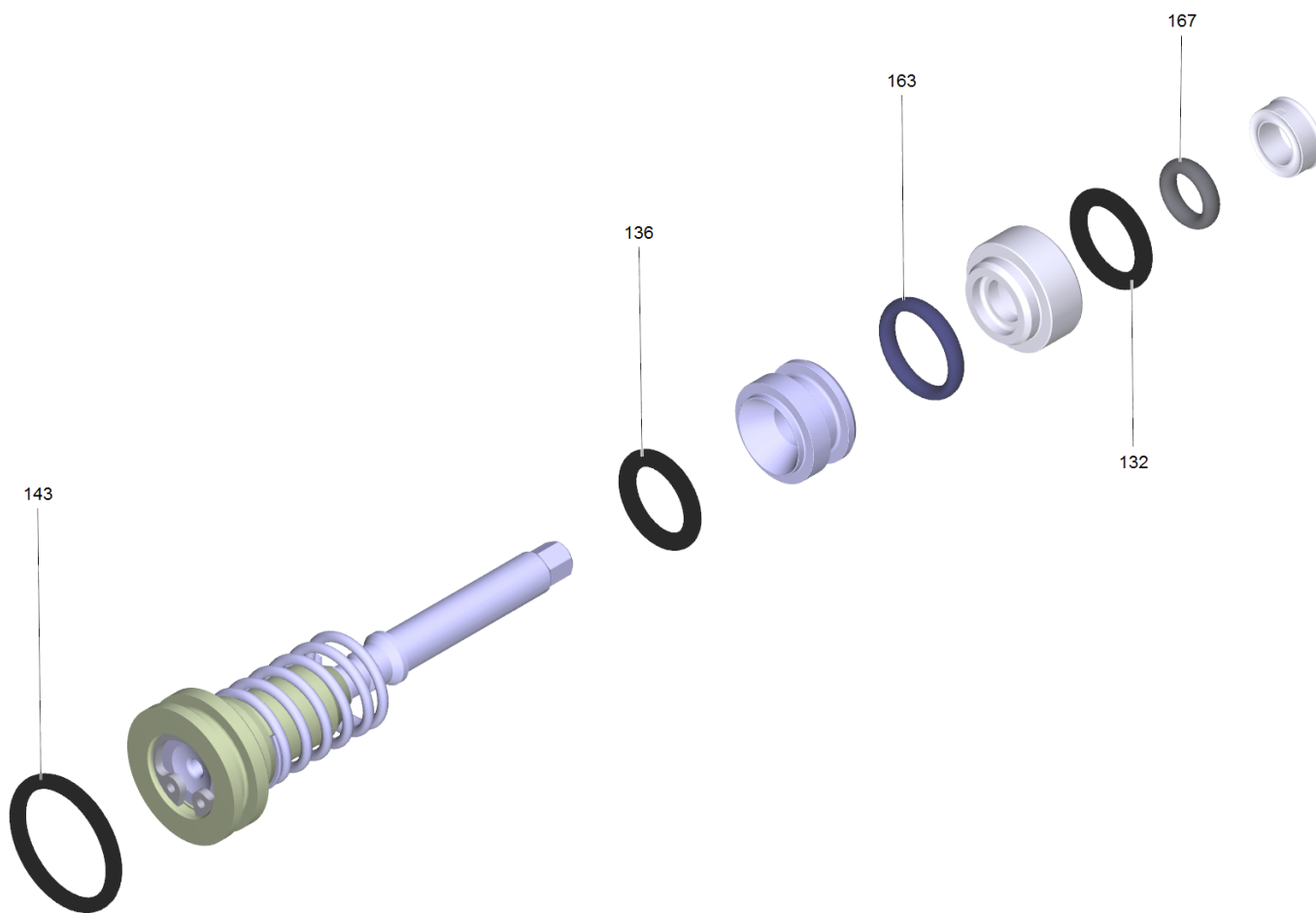


21 Cylinder head

ET/VT (spare/wear parts)	Pos	Material #	Name	Qty.	Unit
X-X	1	2.885-186.0	Spare parts set excess-current	1.000	ST
X-X	2	6.362-381.0	O-Ring seal 13x2 - NBR 70	1.000	ST
	3	6.362-958.0	O-Ring seal 9 x 2-NBR 90	1.000	ST
	4	6.362-101.0	O-Ring seal 8 X 2	1.000	ST
X-X	5	6.362-486.0	O-Ring seal 4,7 X 1,9 -NBR 70	1.000	ST
X-X	6	5.314-150.0	Pin	2.000	ST
X-X	7	5.062-149.0	Housing	1.000	ST
X-X	8	6.362-204.0	O-Ring seal 60,0 X 2,0-NBR 70	1.000	ST
X-X	10	4.550-942.0	Cylinder head complete brass	1.000	ST
X-X	11	6.363-435.0	Grooved ring 12x17x4,25/2,5	3.000	ST
X-X	12	5.731-620.0	Fine filter	1.000	ST
X-X	13	5.443-644.0	Tube intake	1.000	ST
	14	6.363-038.0	O-Ring seal 13X3 NBR 70	3.000	ST
	15	5.048-915.0	Clamp	1.000	ST
X-X	16	6.363-613.0	O-Ring seal 4 x 2 -NBR90	1.000	ST
X-X	17	4.584-022.0	Valve pin complete	1.000	ST
X-X	18	6.362-384.0	O-Ring seal 9x1,5 - NBR 70	2.000	ST
X	19	4.769-034.0	Nozzle insert only for replacement	1.000	ST
Position text: 1.168-600.0 /-601.0 /-602.0 /-604.0/-607.0 /-608.0 /-609.0 /-610.0					
X	19	4.769-035.0	Nozzle insert	1.000	ST
Position text: 1.168-603.0 /-605.0					
	21	7.306-268.0	Screw M6x70 -8.8-R3R (In6Rd)	3.000	ST
X-X	22	4.580-702.0	Plug complete	1.000	ST
	23	6.362-427.0	O-Ring seal 15,0x2,0	1.000	ST
X-X	24	6.465-031.0	Connection 3/4	1.000	ST

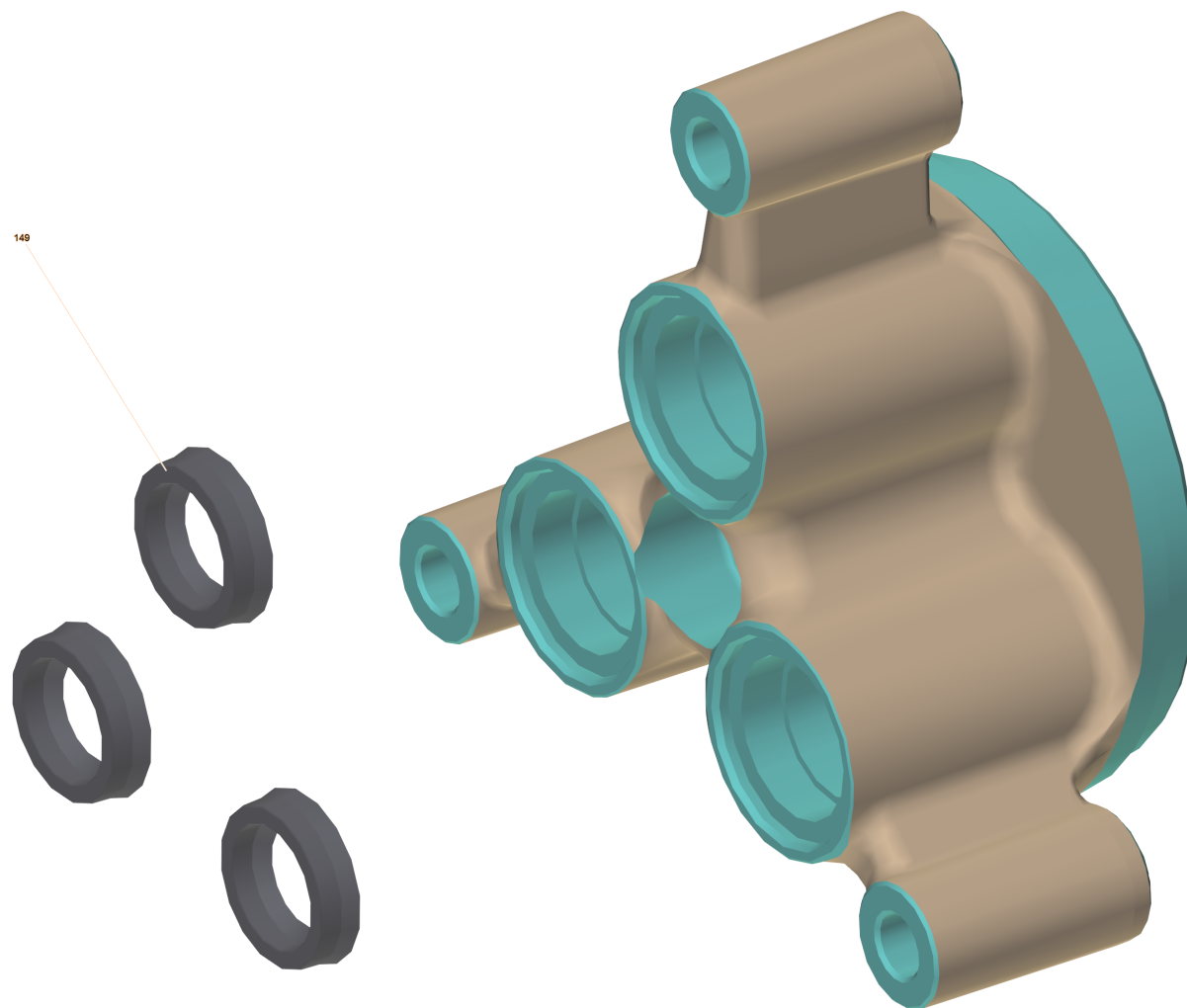
21 Cylinder head

ET/VT (spare/wear parts)	Pos	Material #	Name	Qty.	Unit
X-X	25	6.362-562.0	O-Ring seal 21,95X 1,78-NBR 90	1.000	ST
X-X	28	5.443-654.0	Tube Ruecklauf WCM K7 D117	1.000	ST



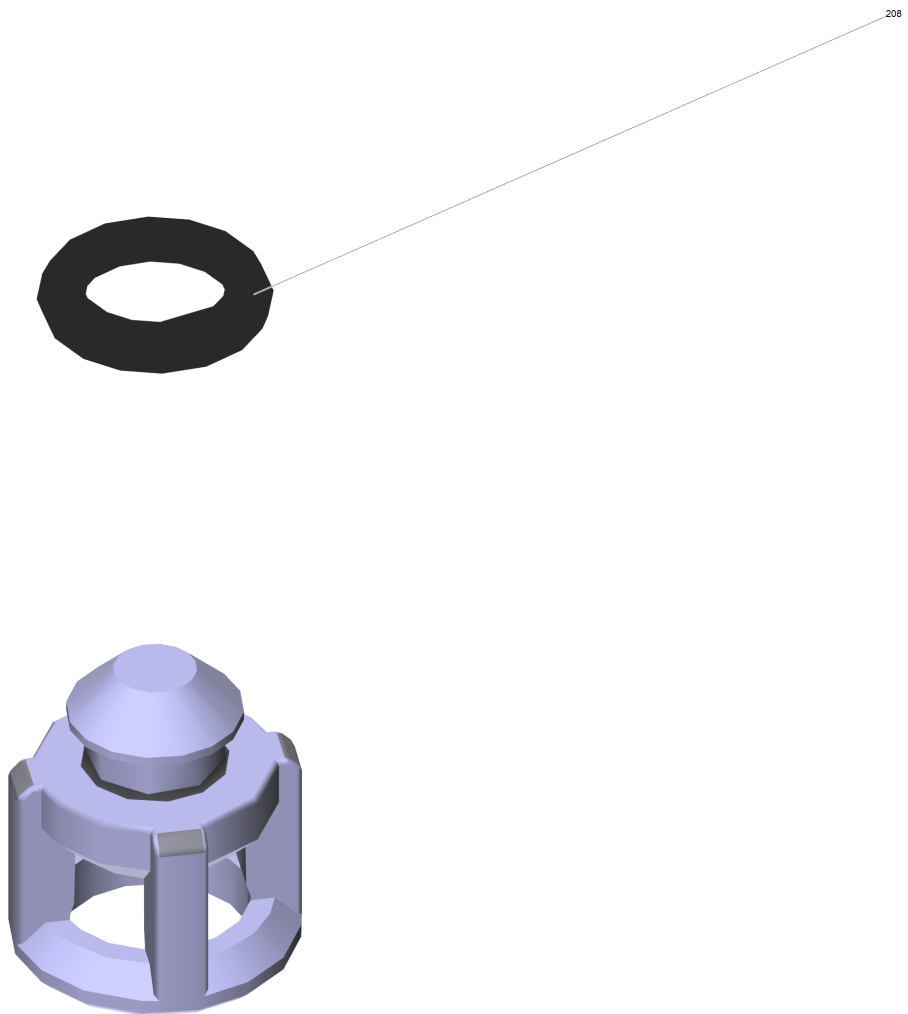
1 Spare parts set excess-current (2.885-186.0)

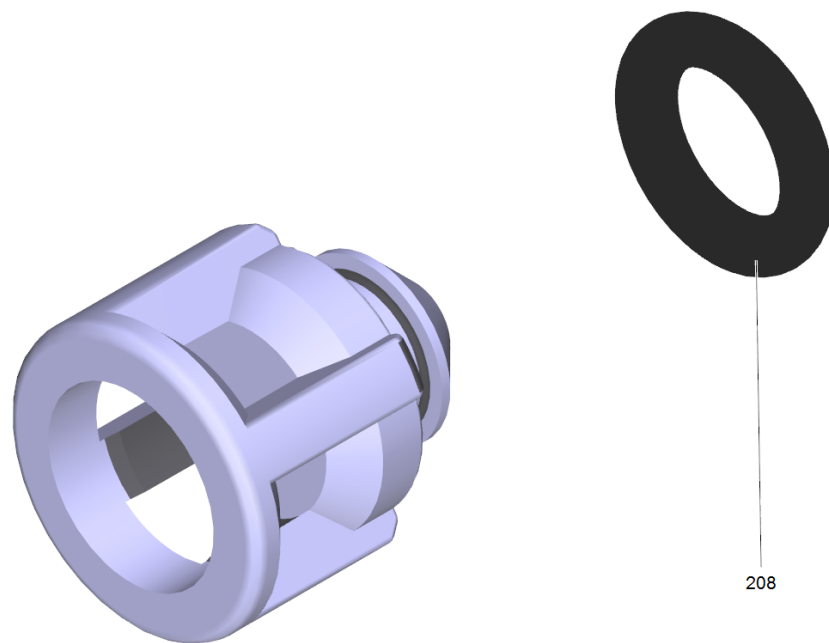
ET/VT (spare/wear parts)	Pos	Material #	Name	Qty.	Unit
	132	6.362-101.0	O-Ring seal 8 X 2	1.000	ST
X-X	136	6.362-614.0	O-Ring seal 21,0 X 4,0-FPM 83 VITON	1.000	ST
X-X	143	6.362-381.0	O-Ring seal 13x2 - NBR 70	1.000	ST
	163	6.362-427.0	O-Ring seal 15,0x2,0	1.000	ST
	167	6.363-606.0	O-Ring seal 4,7 x 1,9 -NBR70	1.000	ST



10 Cylinder head complete brass (4.550-942.0)

ET/VT (spare/wear parts)	Pos	Material #	Name	Qty.	Unit
X-X	149	6.363-435.0	Grooved ring 12x17x4,25/2,5	3.000	ST

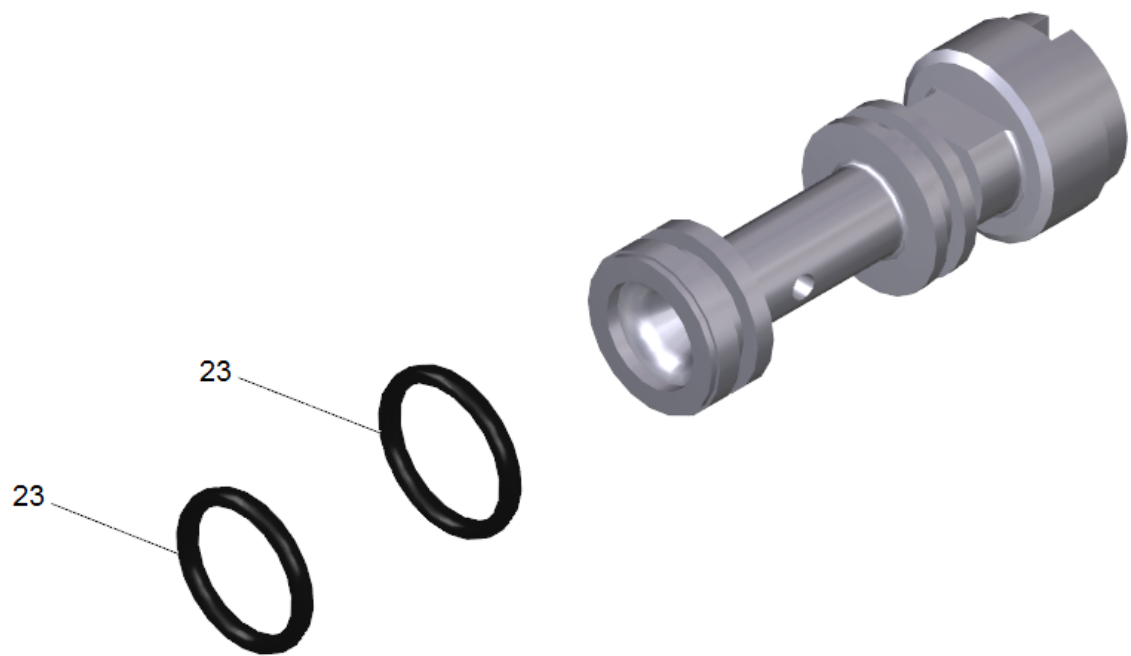




208

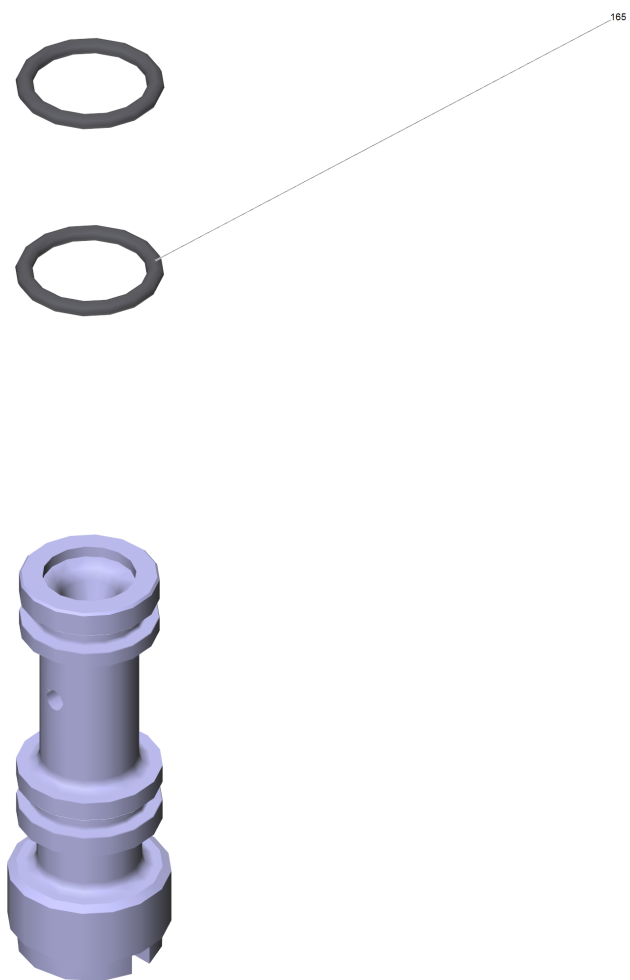
17 Valve pin complete (4.584-022.0)

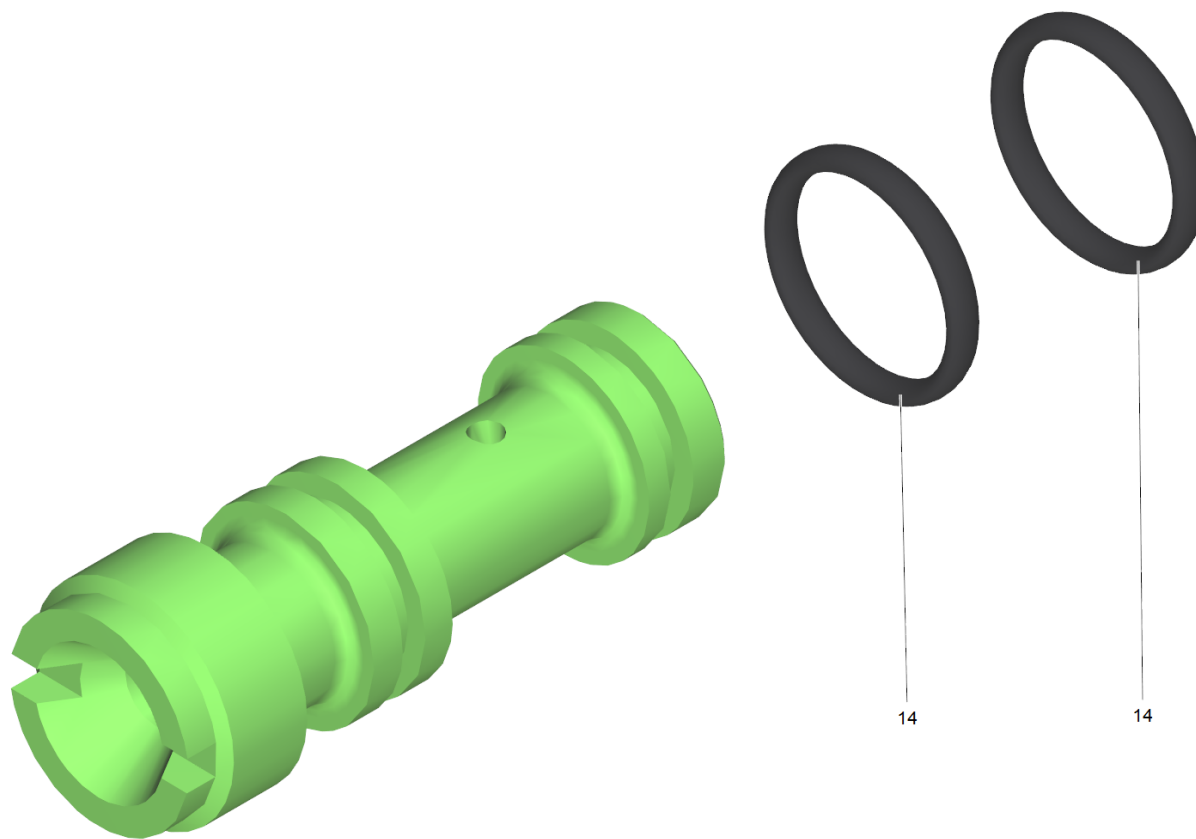
ET/VT (spare/wear parts)	Pos	Material #	Name	Qty.	Unit
X-X	208	6.363-613.0	O-Ring seal 4 x 2 -NBR90	1.000	ST



19 Nozzle insert only for replacement (4.769-034.0)

ET/VT (spare/wear parts)	Pos	Material #	Name	Qty.	Unit
X-X	23	6.362-384.0	O-Ring seal 9x1,5 - NBR 70	2.000	ST

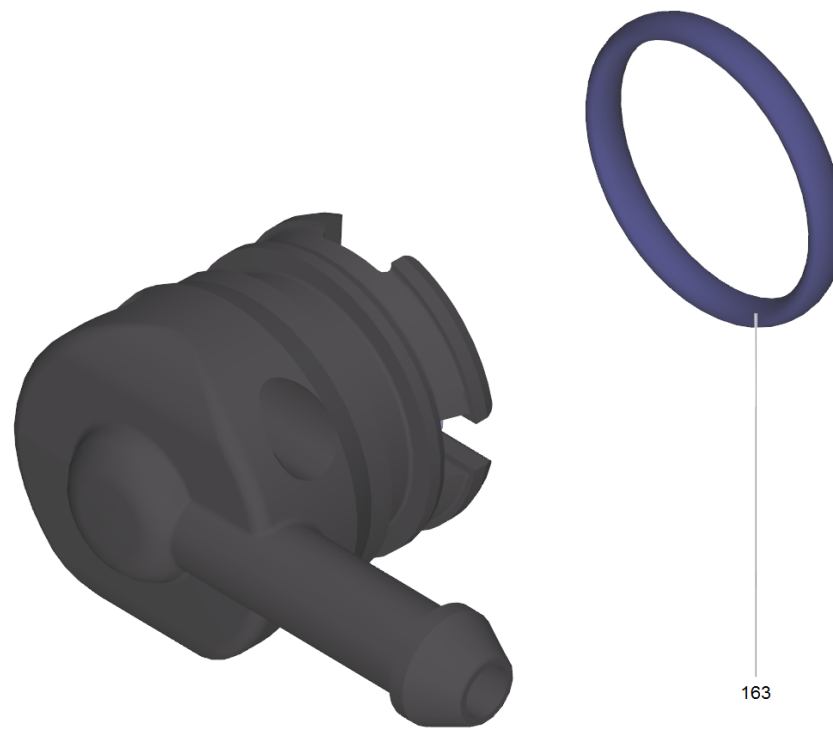




19 Nozzle insert (4.769-035.0)

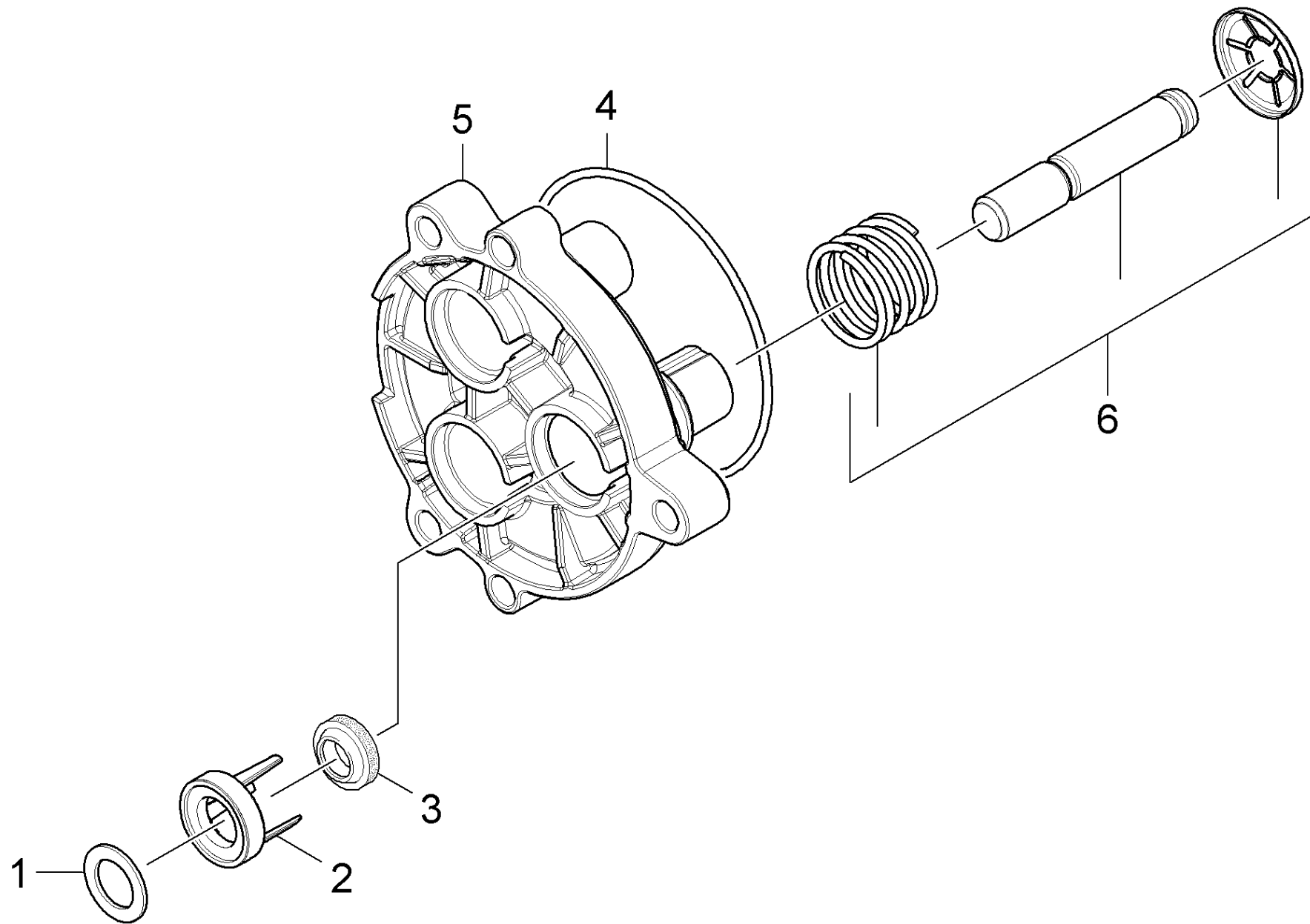
ET/VT (spare/wear parts)	Pos	Material #	Name	Qty.	Unit
X-X	165	6.362-384.0	O-Ring seal 9x1,5 - NBR 70	2.000	ST





22 Plug complete (4.580-702.0)

Pos	Material #	Name	Qty.	Unit
163	6.362-427.0	O-Ring seal 15,0x2,0	1.000	ST

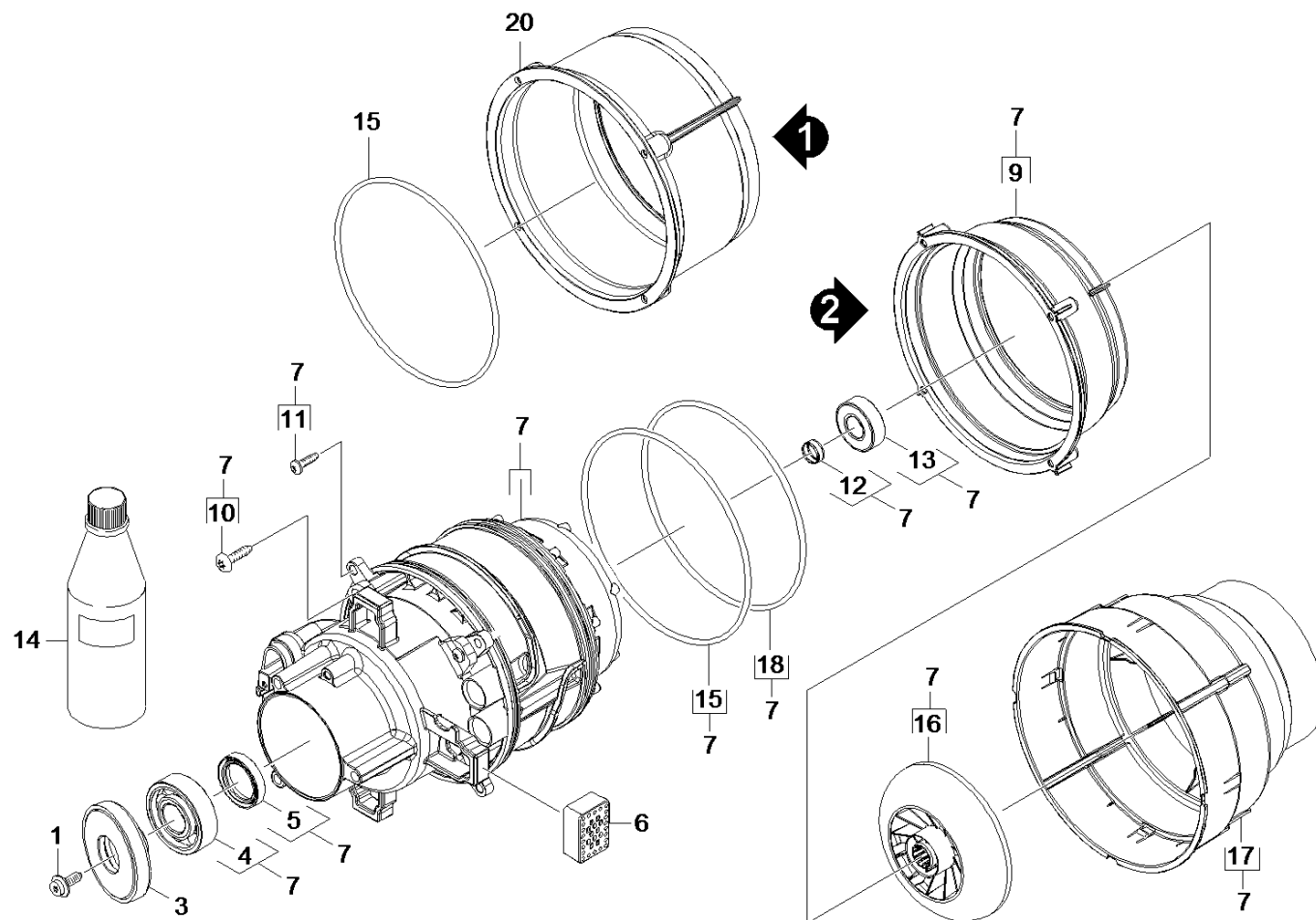


22 Piston guidance

ET/VT (spare/wear parts)	Pos	Material #	Name	Qty.	Unit	from ser.nr.
X-X	1	5.116-380.0	Washer piston guidance	3.000	ST	
X-X	1	5.116-458.0	Washer piston guidance	3.000	ST	12748
Position text: 1.168-609.0						
X-X	2	5.116-381.0	Supporting disk	3.000	ST	
X-X	3	6.363-633.0	Grooved ring 12x18x6/5/1	3.000	ST	
X-X	4	6.363-449.0	O-Ring seal 72x2 -NBR70	1.000	ST	
X-X	5	5.062-349.0	Piston guidance 90° K7	1.000	ST	
X-X	5	5.062-046.0	Piston guidance	1.000	ST	12748
Position text: 1.168-609.0						
X-X	6	4.553-286.0	Piston complete	3.000	ST	

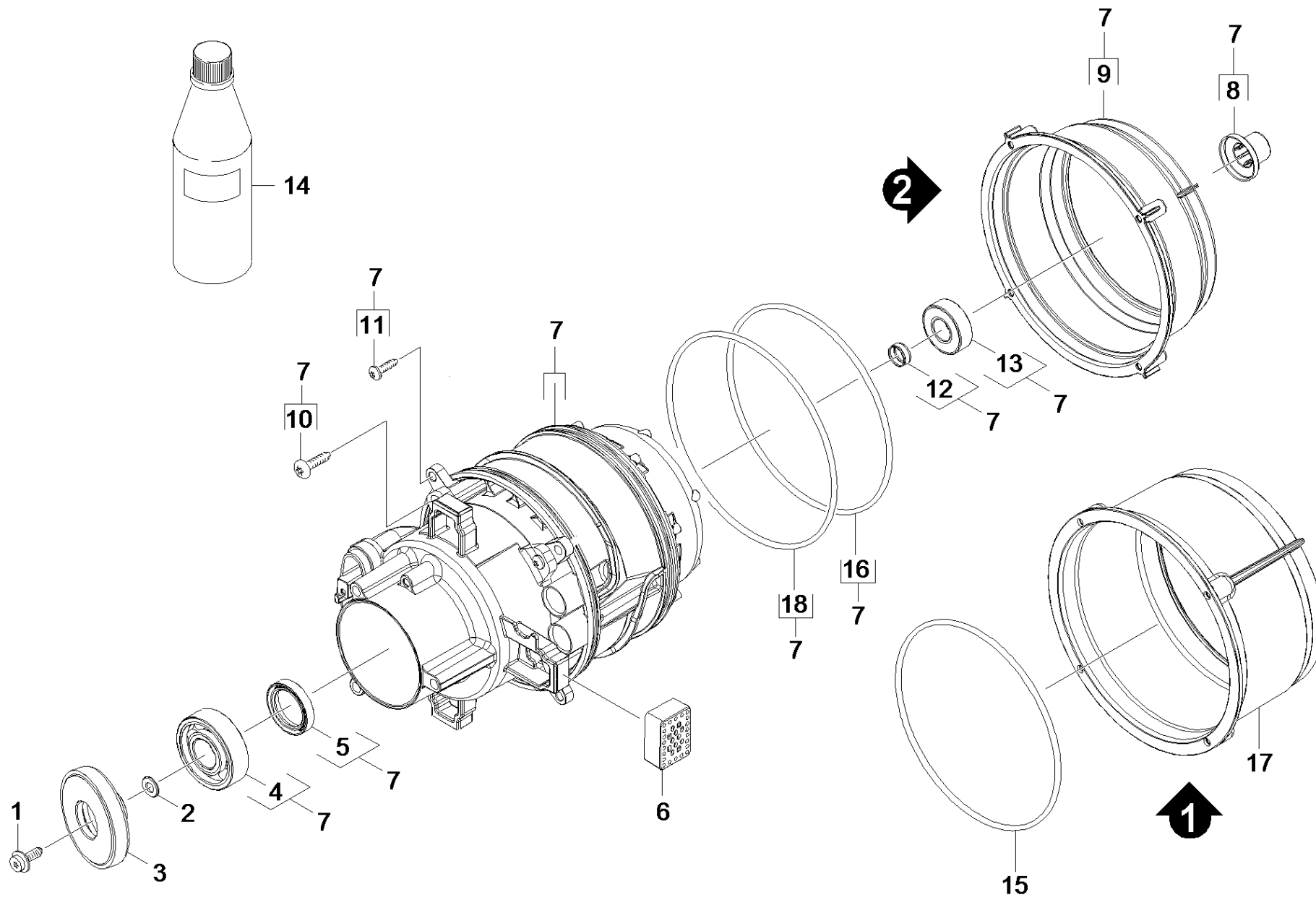
30 Motor

Pos	Name	Qty.	Unit
31	Motor	1.000	ST
Position text: 1.168-600.0			
32	Motor	1.000	ST
Position text: 1.168-601.0 /-602.0 /-603.0 /-604.0/-606.0 /-607.0 /-608.0 /-609.0 /-610.0			
33	Motor	1.000	ST
Position text: 1.168-605.0			



31 Motor

ET/VT (spare/wear parts)	Pos	Material #	Name	Qty.	Unit	Footnote text
	1	6.304-048.0	Cylinder head screw M6x19	1.000	ST	
X-X	3	4.120-231.0	Wobble plate complete 13° (D67)	1.000	ST	
	4	7.401-155.0	Ball bearing 6304-WAELZLAGERST DIN 625	1.000	ST	
	5	6.367-051.0	Rotary shaft seal -20X37X8 NBR	1.000	ST	
	6	5.767-025.0	Rubber buffer	4.000	ST	
	7	4.624-220.0	Motor complete for replacement K7 WCM *E	1.000	ST	
X-X	9	5.093-422.0	Outer covering water flow K7 WCM	1.000	ST	VERSION 2
	10	6.303-320.0	Screw M 5x 20-St-R2R	6.000	ST	
	12	6.343-218.0	Tolerance ring 15x6	1.000	ST	
X	13	7.401-128.0	Ball bearing 6202-2RS -Wälzl.St DIN 625	1.000	ST	
X-X	14	6.288-050.0	Engine oil 1L	1.000	ST	
X-X	15	6.363-593.0	O-Ring seal 146x5 EPDM	2.000	ST	
	16	5.600-103.0	Blower wheel Kuehlung Kabeltrom. WCM K7	1.000	ST	
	17	5.692-122.0	Air circulation Kuehlung Kabeltrom. WCM	1.000	ST	
X-X	18	6.363-647.0	O-Ring seal D130x5	1.000	ST	VERSION 2
X	20	5.093-412.0	Covering cap MG WCM D117	1.000	ST	VERSION 1

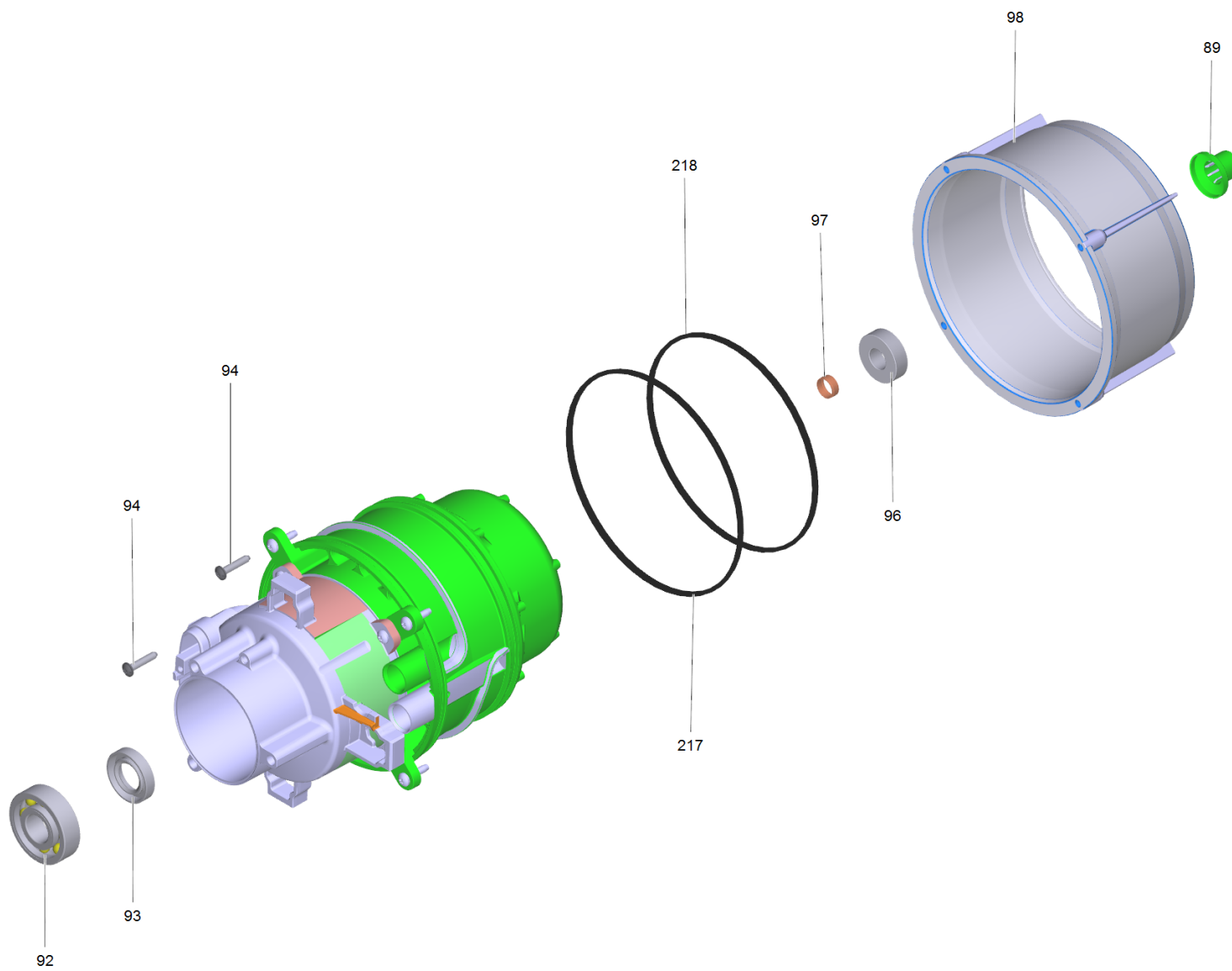


32 Motor

ET/VT (spare/wear parts)	Pos	Material #	Name	Qty.	Unit	from ser.nr.	Footnote text
	1	6.304-048.0	Cylinder head screw M6x19	1.000	ST		
	2	5.116-428.0	Washer	1.000	ST	12748	
Position text: 1.168-609.0							
X-X	3	4.120-231.0	Wobble plate complete 13° (D67)	1.000	ST		
Position text: 1.168-601.0 /-602.0 /-604.0 /-606.0/-607.0 /-608.0 /-610.0							
	3	6.401-350.0	Wobble plate	1.000	ST		
Position text: 1.168-603.0 /-609.0							
	3	4.120-236.0	Wobble plate complete 11°28'	1.000	ST	12748	
Position text: 1.168-609.0							
	4	7.401-010.0	Ball bearing 6303 -St DIN 625	1.000	ST	12748	
Position text: 1.168-609.0							
	4	7.401-155.0	Ball bearing 6304-WAELZLAGERST DIN 625	1.000	ST		
	5	7.367-002.0	Radial shaft seal ring A17x35x7-NBR DIN	1.000	ST	12748	
Position text: 1.168-609.0							
	5	6.367-051.0	Rotary shaft seal -20X37X8 NBR	1.000	ST		
	6	5.767-025.0	Rubber buffer	4.000	ST		
	7	4.624-171.0	Motor for replacement 2,5KW	1.000	ST	12748	
Position text: 1.168-609.0							
X-X	7	4.624-211.0	Motor K7 WCM	1.000	ST		
Position text: 1.168-601.0 /-602.0 /-604.0 /-607.0/-610.0							
	7	4.624-216.0	Motor complete for replacement K7 WCM *C	1.000	ST		
Position text: 1.168-603.0 /-609.0							
	7	4.624-219.0	Motor complete for replacement K7 WCM *G	1.000	ST		
Position text: 1.168-606.0 /-608.0							
	8	5.443-634.0	Covering cap shaft WCM K6/7	1.000	ST		

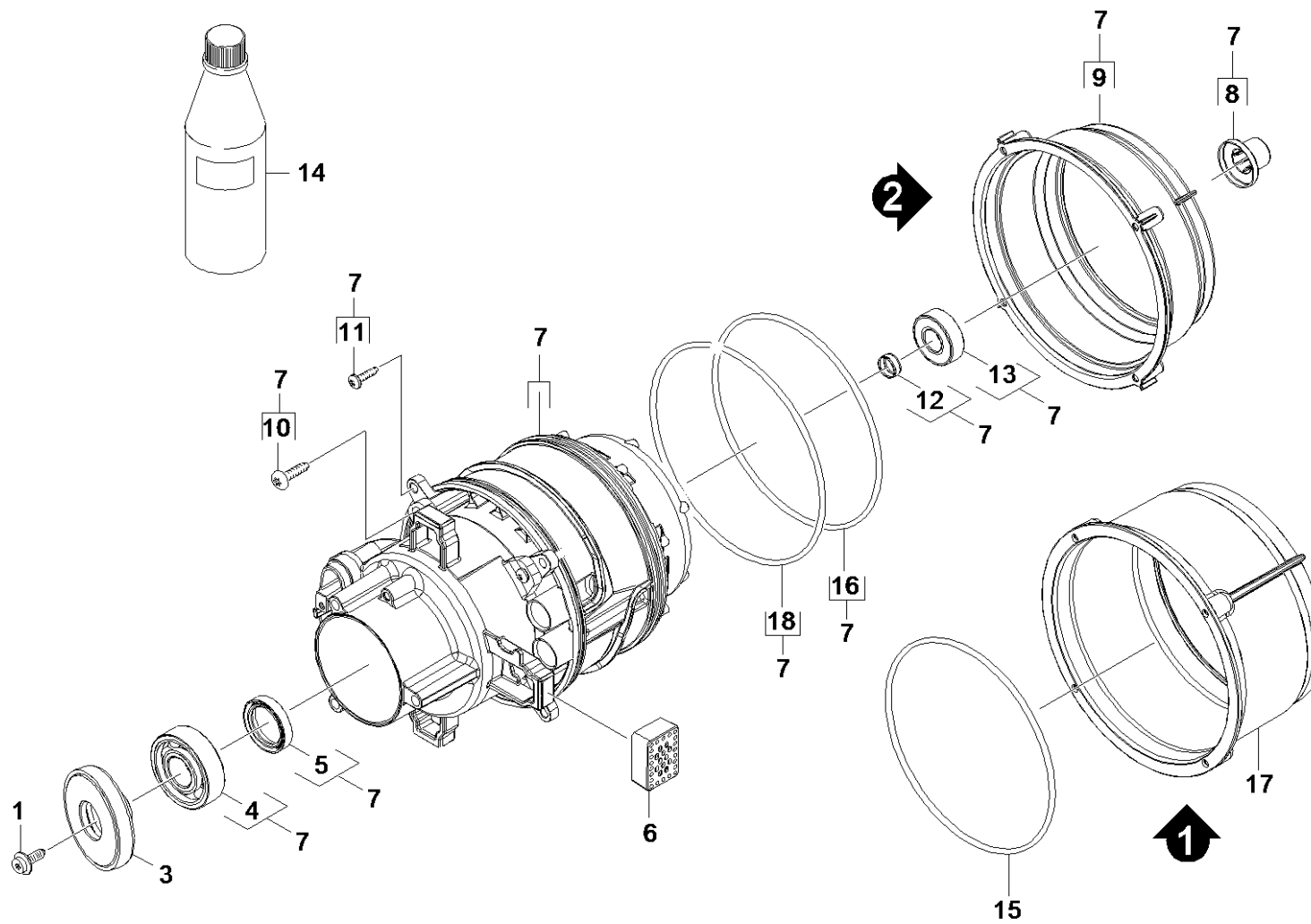
32 Motor

ET/VT (spare/wear parts)	Pos	Material #	Name	Qty.	Unit	from ser.nr.	Footnote text
	9	5.093-417.0	Outer covering water flow K6 WCM	1.000	ST	12748	
Position text: 1.168-609.0							
X-X	9	5.093-422.0	Outer covering water flow K7 WCM	1.000	ST		VERSION 2
	10	6.303-320.0	Screw M 5x 20-St-R2R	8.000	ST		
	12	6.343-218.0	Tolerance ring 15x6	1.000	ST		
X	13	7.401-128.0	Ball bearing 6202-2RS -Wälzl.St DIN 625	1.000	ST		
X-X	14	6.288-050.0	Engine oil 1L	1.000	ST		
X	16	6.363-632.0	O-Ring seal D125x5 -EPDM	1.000	ST	12748	
Position text: 1.168-609.0							
X-X	16	6.363-647.0	O-Ring seal D130x5	1.000	ST		VERSION 2
X	17	5.093-412.0	Covering cap MG WCM D117	1.000	ST		VERSION 1
X-X	18	6.363-593.0	O-Ring seal 146x5 EPDM	2.000	ST		
X	18	6.363-646.0	O-Ring seal D140x5	1.000	ST	12748	
Position text: 1.168-609.0							



7 Motor for replacement 2,5KW (4.624-171.0)

ET/VT (spare/wear parts)	Pos	Material #	Name	Qty.	Unit	Footnote text
	89	5.443-634.0	Covering cap shaft WCM K6/7	1.000	ST	
	92	7.401-010.0	Ball bearing 6303 -St DIN 625	1.000	ST	
	93	7.367-002.0	Radial shaft seal ring A17x35x7-NBR DIN	1.000	ST	
	94	6.303-320.0	Screw M 5x 20-St-R2R	6.000	ST	
X	96	7.401-128.0	Ball bearing 6202-2RS -Wälzl.St DIN 625	1.000	ST	
	97	6.343-218.0	Tolerance ring 15x6	1.000	ST	
	98	5.093-417.0	Outer covering water flow K6 WCM	1.000	ST	VERSION 2
	125	6.288-048.0	Engine oil 15W/40	1.000	L	
X	217	6.363-646.0	O-Ring seal D140x5	2.000	ST	
X	218	6.363-632.0	O-Ring seal D125x5 -EPDM	1.000	ST	VERSION 2

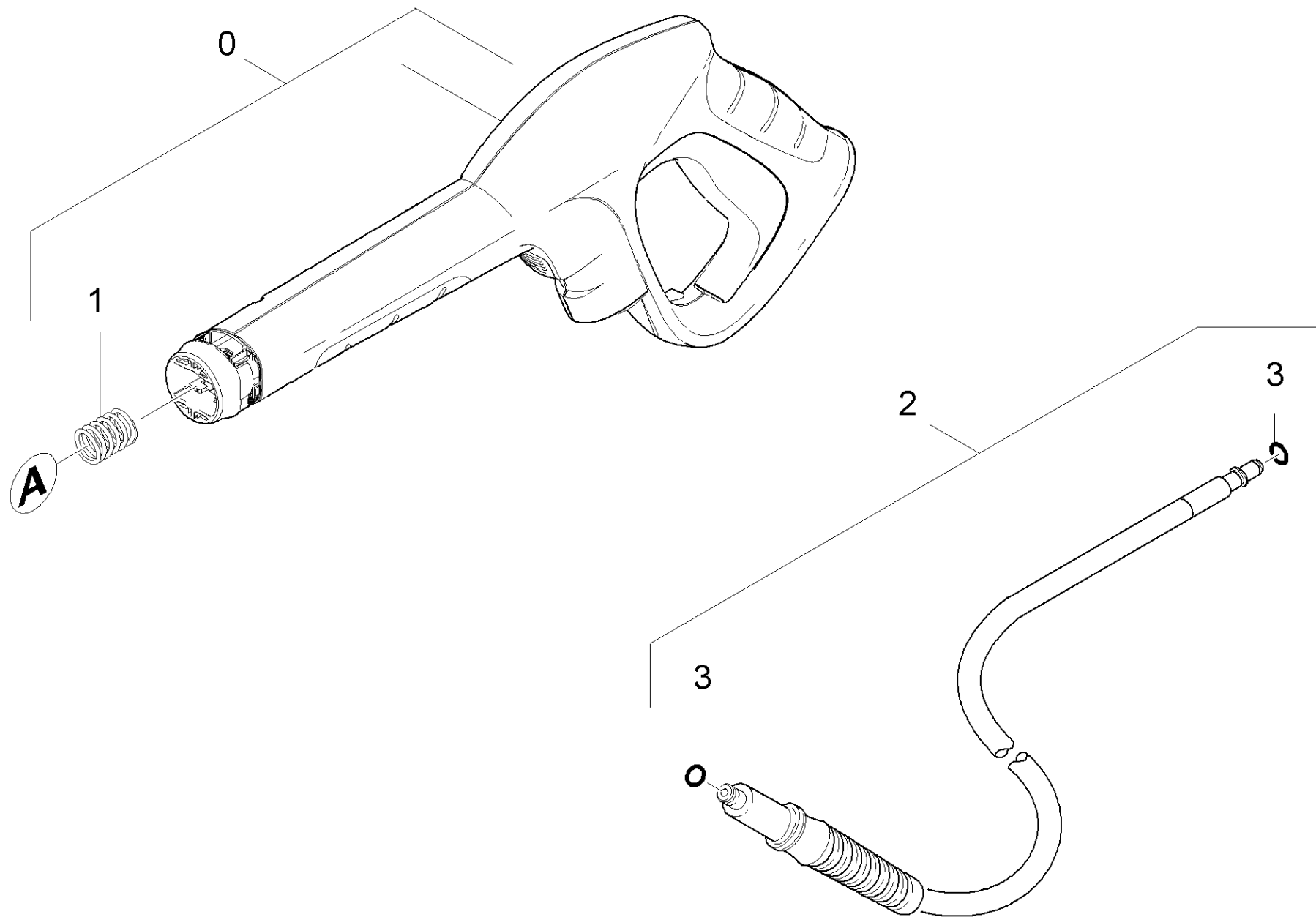


33 Motor

ET/VT (spare/wear parts)	Pos	Material #	Name	Qty.	Unit	Footnote text
	1	6.304-048.0	Cylinder head screw M6x19	1.000	ST	
	3	6.401-350.0	Wobble plate	1.000	ST	
Position text: 1.167-605.0						
	4	7.401-155.0	Ball bearing 6304-WAELZLAGERST DIN 625	1.000	ST	
	5	6.367-051.0	Rotary shaft seal -20X37X8 NBR	1.000	ST	
	6	5.767-025.0	Rubber buffer	4.000	ST	
	7	4.624-217.0	Motor complete for replacement K6/7 WCM	1.000	ST	
Position text: 1.167-605.0						
	8	5.443-634.0	Covering cap shaft WCM K6/7	1.000	ST	
X-X	9	5.093-422.0	Outer covering water flow K7 WCM	1.000	ST	VERSION 2
	10	6.303-320.0	Screw M 5x 20-St-R2R	6.000	ST	
	12	6.343-218.0	Tolerance ring 15x6	1.000	ST	
X	13	7.401-128.0	Ball bearing 6202-2RS -Wälzl.St DIN 625	1.000	ST	
X-X	14	6.288-050.0	Engine oil 1L	1.000	ST	
X-X	15	6.363-593.0	O-Ring seal 146x5 EPDM	2.000	ST	VERSION 1
X	16	6.363-632.0	O-Ring seal D125x5 -EPDM	1.000	ST	VERSION 2
X	17	5.093-412.0	Covering cap MG WCM D117	1.000	ST	VERSION 1
X	18	6.363-646.0	O-Ring seal D140x5	1.000	ST	VERSION 2

40 Accessories

Pos	Name	Qty.	Unit	var. information
41	Hand trigger gun	1.000	ST	
42	Jet pipe	1.000	ST	
43	Foam nozzle	1.000	ST	
44	Power Brush	1.000	ST	
45	Surface cleaner	1.000	ST	T 400
46	T 450 T-Racer surface cleaner	1.000	ST	T 450



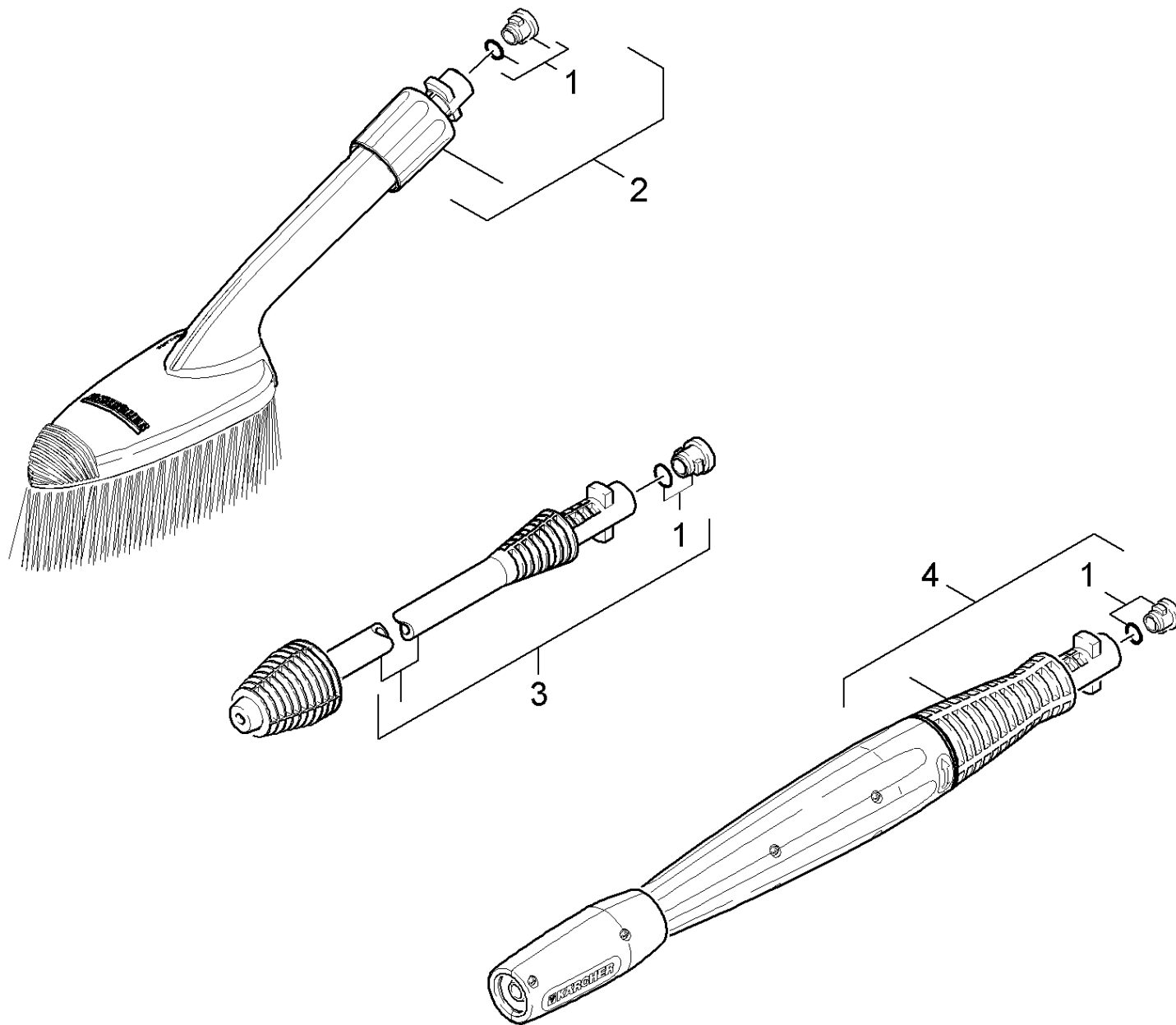
41 Hand trigger gun

ET/VT (spare/wear parts)	Pos	Material #	Name	Qty.	Unit
X-X	0	2.642-172.0	G 160 Q pistol Quick Connect	1.000	ST
	1	5.332-464.0	Pressure spring	1.000	ST
	2	6.391-796.0	High pressure hose rubber 16/12 60°C	1.000	ST
Position text: 1.168-602.0 /-604.0 /-606.0 /-607.0/-608.0 /-609.0 /-610.0					
	2	6.391-795.0	High pressure hose 16MPa/12 60°C QC B	1.000	ST
Position text: 1.168-601.0 /-603.0 /-605.0					
	2	6.391-795.0	High pressure hose 16MPa/12 60°C QC B	1.000	ST
Position text: 1.168-600.0					
X-X	3	6.363-410.0	O-Ring seal 5,7x1,78 NBR 90Shore	2.000	ST



0 G 160 Q pistol Quick Connect (2.642-172.0)

Pos	Material #	Name	Qty.	Unit
1	5.332-464.0	Pressure spring	1.000	ST



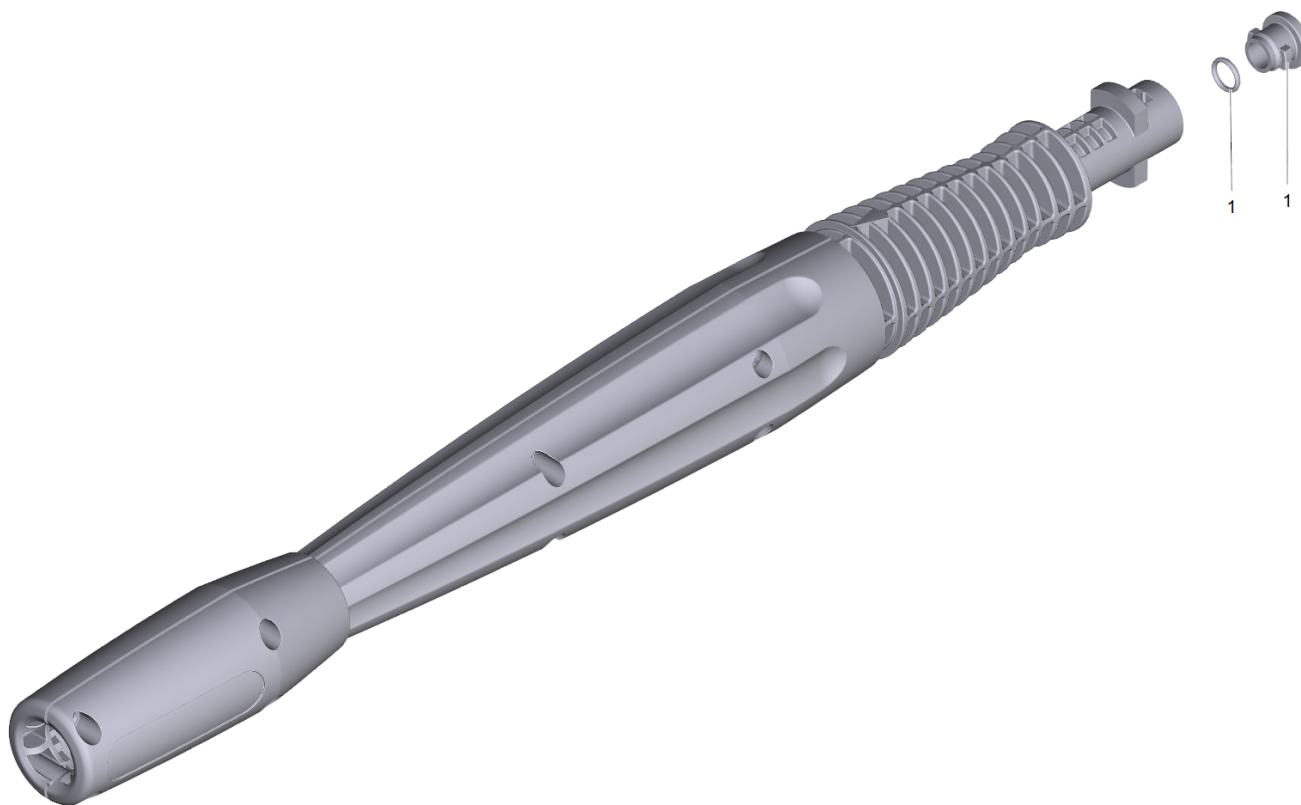
42 Jet pipe

ET/VT (spare/wear parts)	Pos	Material #	Name	Qty.	Unit
X-X	1	2.640-729.0	O-Ring seal set	1.000	ST
X-X	2	2.640-589.0	Brush lengthwise	1.000	ST
X	3	4.764-213.0	Dirt blaster 033 St	1.000	ST
Position text: 1.168-600.0 /-601.0 /-602.0 /-604.0/-605.0 /-606.0 /-607.0 /-608.0 /-610.0					
	3	4.764-211.0	Dirt blaster 0295 St	1.000	ST
Position text: 1.168-603.0 /-609.0					
X	4	4.760-527.0	VPS K5 0287	1.000	ST
Position text: 1.168-603.0 /-609.0					
	4	4.760-524.0	VPS K5 033	1.000	ST
Position text: 1.168-600.0 /-601.0 /-602.0 /-604.0/-605.0 /-606.0 /-607.0 /-608.0 /-610.0					



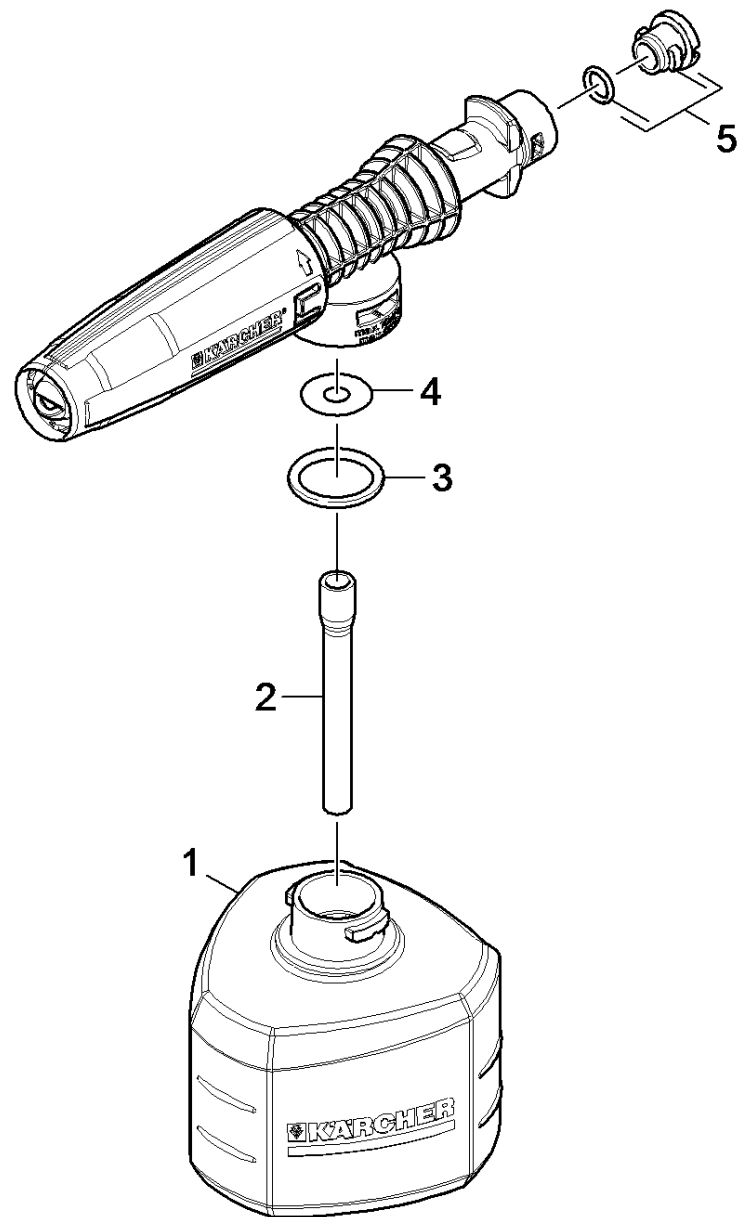
3 Dirt blaster 0295 St (4.764-211.0)

ET/VT (spare/wear parts)	Pos	Material #	Name	Qty.	Unit
X-X	1	2.640-729.0	O-Ring seal set	1.000	ST



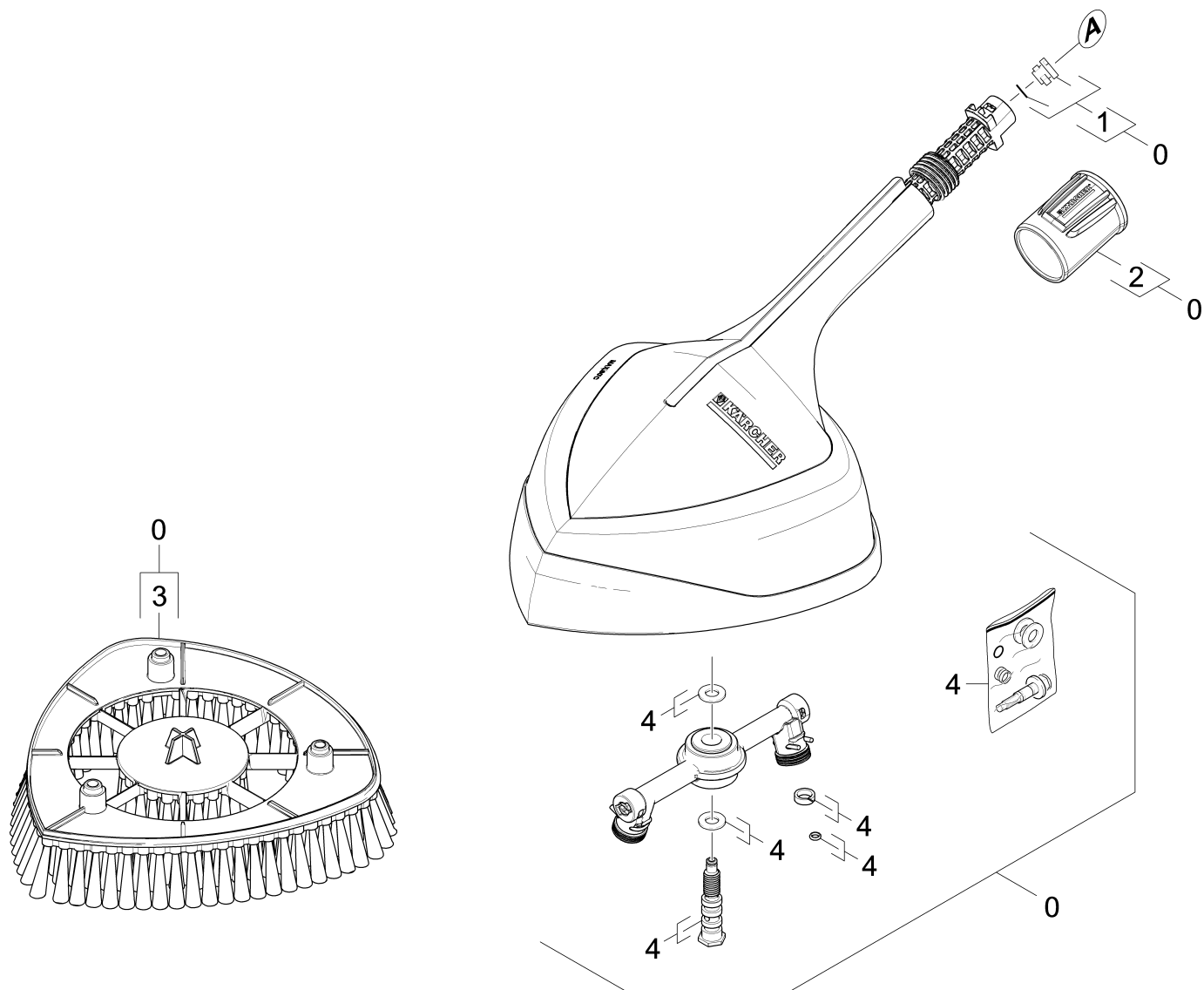
4 VPS K5 0287 (4.760-527.0)

ET/VT (spare/wear parts)	Pos	Material #	Name	Qty.	Unit
X-X	1	2.640-729.0	O-Ring seal set	1.000	ST



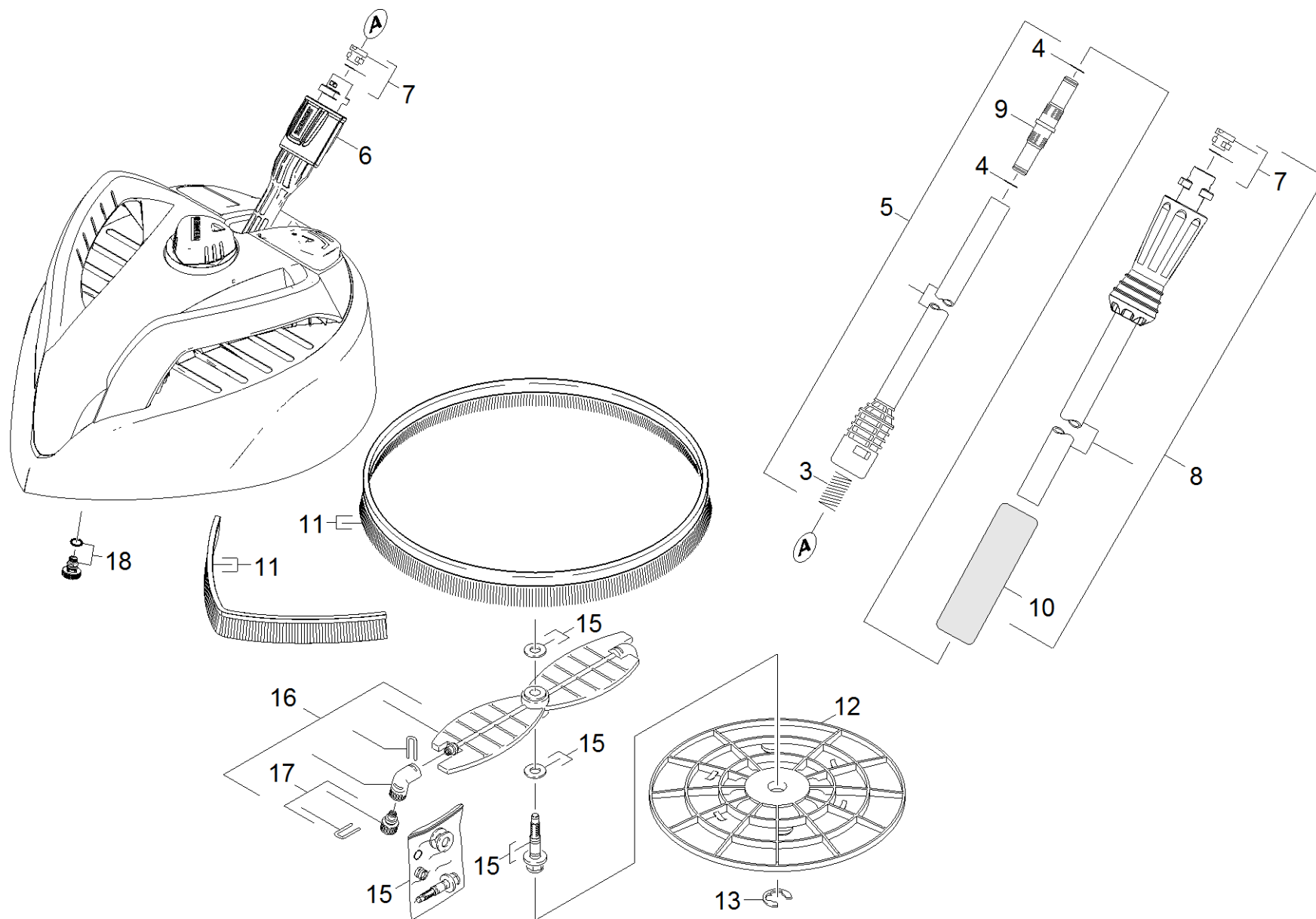
43 Foam nozzle

ET/VT (spare/wear parts)	Pos	Material #	Name	Qty.	Unit	Footnote text
	1	5.071-203.0	Tank cleaning agents 0,3 l	1.000	ST	
	2	6.388-216.0	Hose DN 5	1.000	M	TO ORDER AS CUT GOODS
	3	6.362-874.0	O-Ring seal 21x3 - NBR 70	1.000	ST	
	4	5.367-026.0	Diaphragm	1.000	ST	
X-X	5	2.640-729.0	O-Ring seal set	1.000	ST	



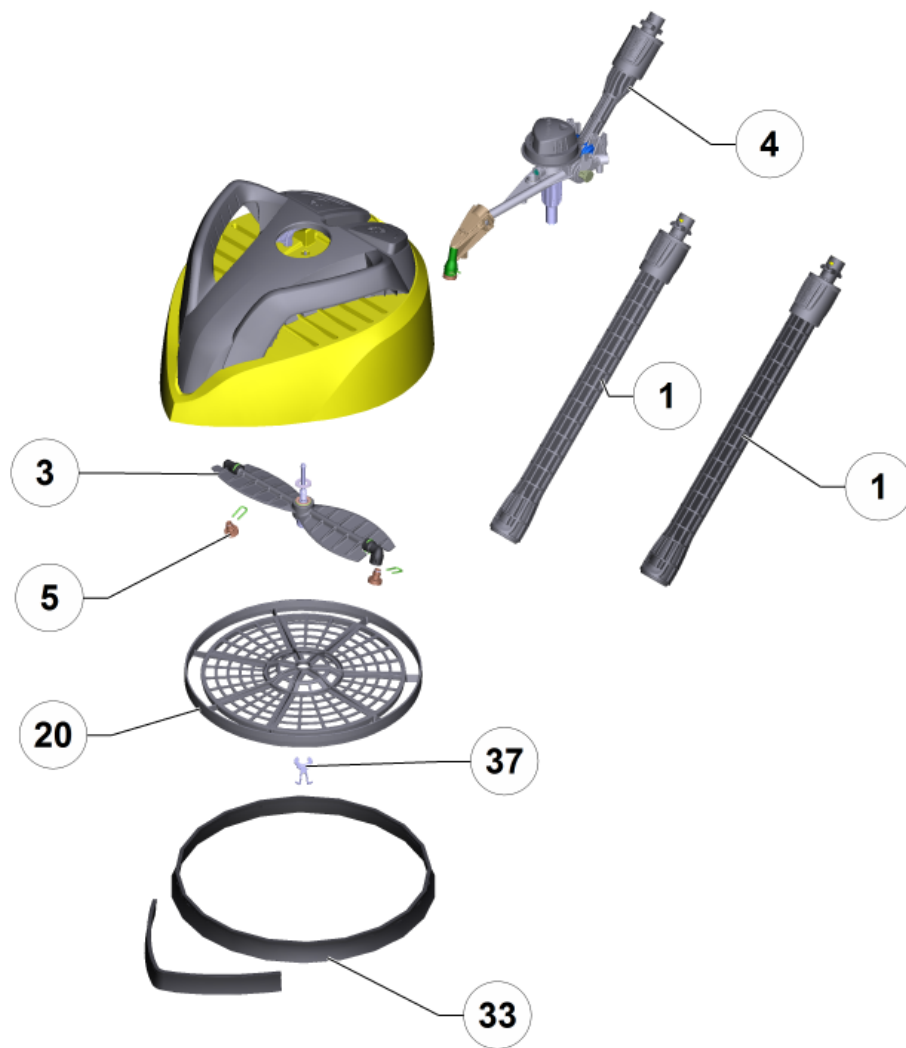
44 Power Brush

ET/VT (spare/wear parts)	Pos	Material #	Name	Qty.	Unit
X-X	0	2.641-812.0	Power-Brush	1.000	ST
X-X	1	2.640-729.0	O-Ring seal set	1.000	ST
	2	5.310-160.0	Nut Kaercher	1.000	ST
	3	5.762-404.0	Brush beam Power-Brush	1.000	ST
	4	2.883-994.0	Spare part set set of gaskets neutrally	1.000	ST



45 Surface cleaner

ET/VT (spare/wear parts)	Pos	Material #	Name	Qty.	Unit	Footnote text
	3	5.332-464.0	Pressure spring	1.000	ST	
	4	6.362-577.0	O-Ring seal 11,0 X 1,5-NBR 70	1.000	ST	
	5	4.760-495.0	Jet pipe	1.000	ST	
	6	5.310-160.0	Nut Kaercher	1.000	ST	
X-X	7	2.640-729.0	O-Ring seal set	2.000	ST	
	8	4.760-688.0	Jet pipe PS	1.000	ST	
	9	5.471-105.0	Coupling element jet pipe extension	1.000	ST	
	10	6.321-160.0	Handhold foamed material	1.000	ST	
	11	2.885-097.0	Spare part set Bürsten T 400	1.000	ST	
	12	5.394-661.0	Protection part	1.000	ST	
	13	7.343-206.0	Lock washer 12-2.1030 DIN 6799	1.000	ST	
	15	2.885-047.0	Set of gaskets T 400	1.000	ST	
	16	2.885-048.0	Spare part set Rotor T 400	1.000	ST	
X-X	17	2.640-727.0	Spare parts nozzles T-Racer 015	1.000	ST	GREY
X-X	17	2.640-642.0	Spare parts nozzles T-Racer 020	1.000	ST	YELLOW
	18	4.764-190.0	Nozzle kpl. 75047	1.000	ST	



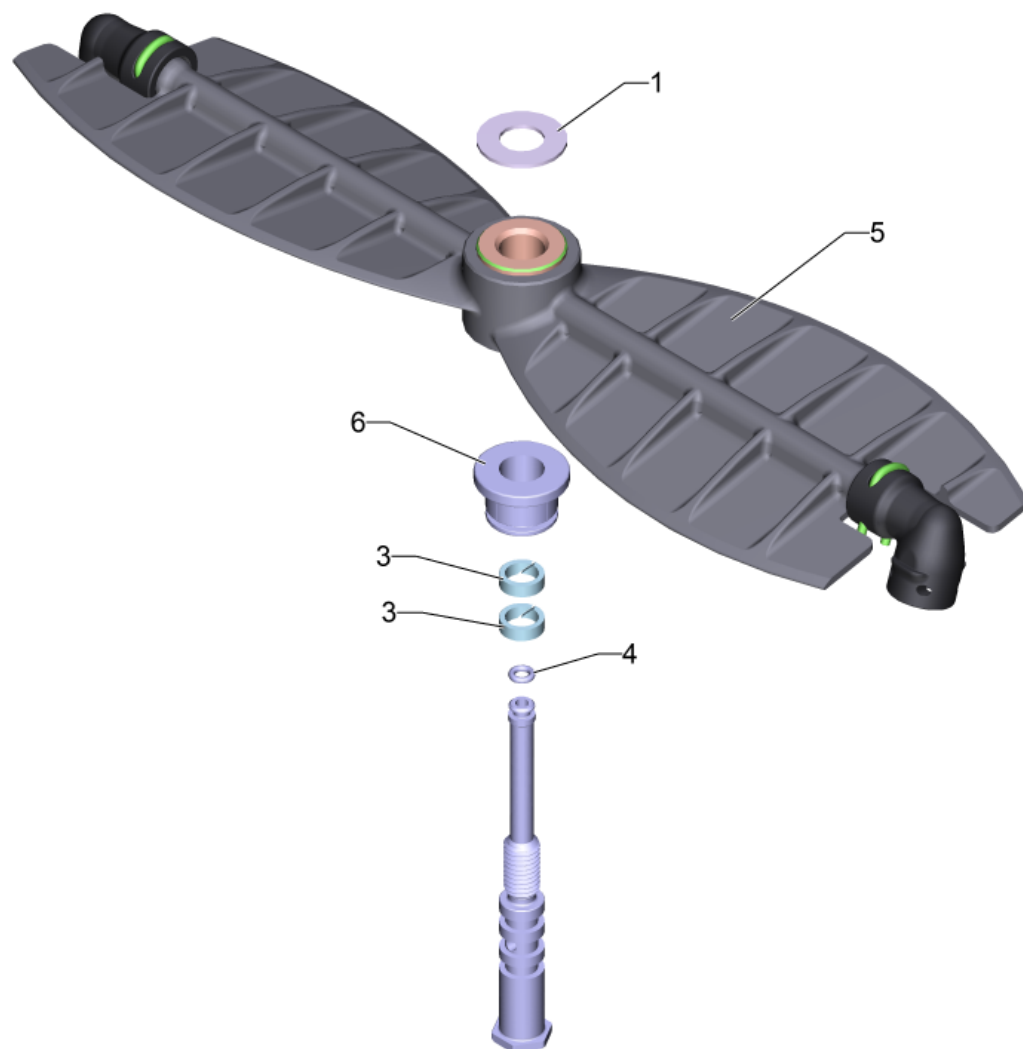
46 T 450 T-Racer surface cleaner

ET/VT (spare/wear parts)	Pos	Material #	Name	Qty.	Unit
X-X	1	2.643-240.0	Single-step jet pipe extension	2.000	ST
X	3	2.885-406.0	Spare parts rotor complete	1.000	ST
	4		Bearing support completely T 400	1.000	ST
X	5	2.643-338.0	Spare parts nozzles T-Racer	1.000	ST
	20	5.394-873.0	Grate T 400 Plus	1.000	ST
	33	2.885-097.0	Spare part set Bürsten T 400	1.000	ST
	37	7.343-206.0	Lock washer 12-2.1030 DIN 6799	1.000	ST



1 Single-step jet pipe extension (2.643-240.0)

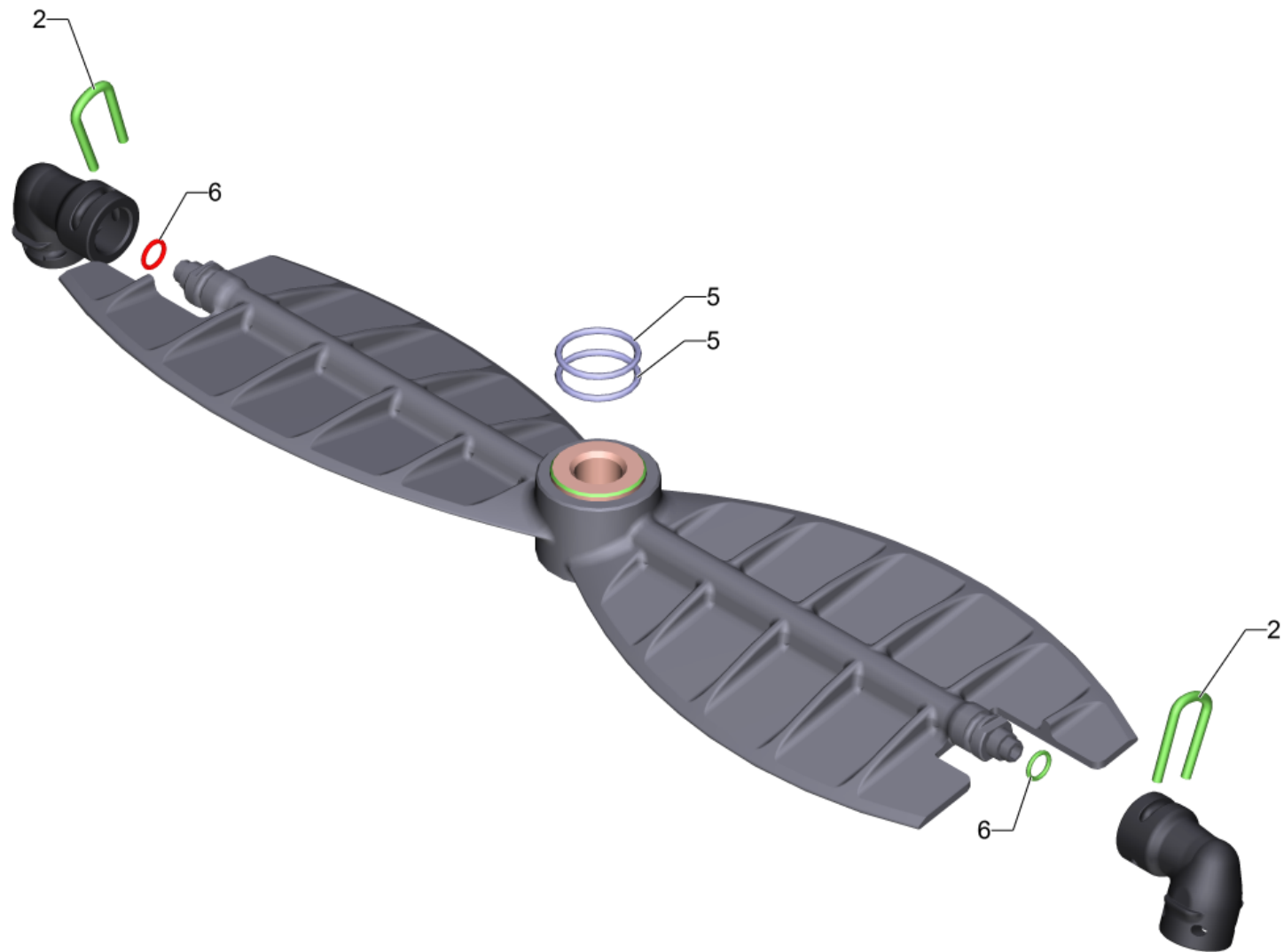
ET/VT (spare/wear parts)	Pos	Material #	Name	Qty.	Unit
X-X	3	2.640-729.0	O-Ring seal set	1.000	ST
	8	5.332-464.0	Pressure spring	1.000	ST
	10	5.310-160.0	Nut Kaercher	1.000	ST



3 Spare parts rotor complete (2.885-406.0)

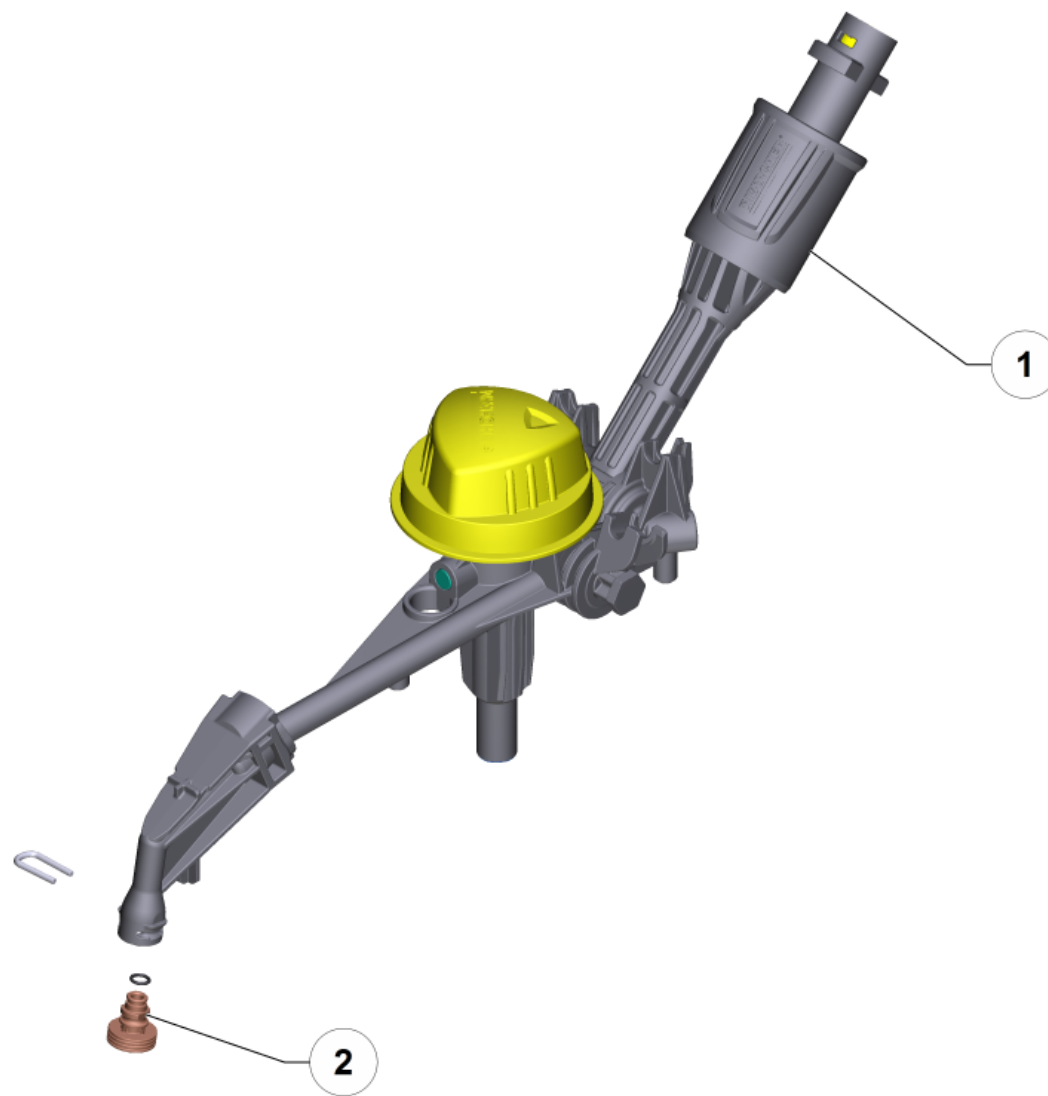
Pos	Material #	Name	Qty.	Unit
1	5.115-971.0	Washer	2.000	ST
3	5.363-412.0	Seal	2.000	ST
4	6.362-984.0	O-Ring d. 3 x 1,5 NBR 80	1.000	ST
5		Rotor complete	1.000	ST
6	5.035-439.0	Sleeve	1.000	ST

5 Rotor complete



5 Rotor complete

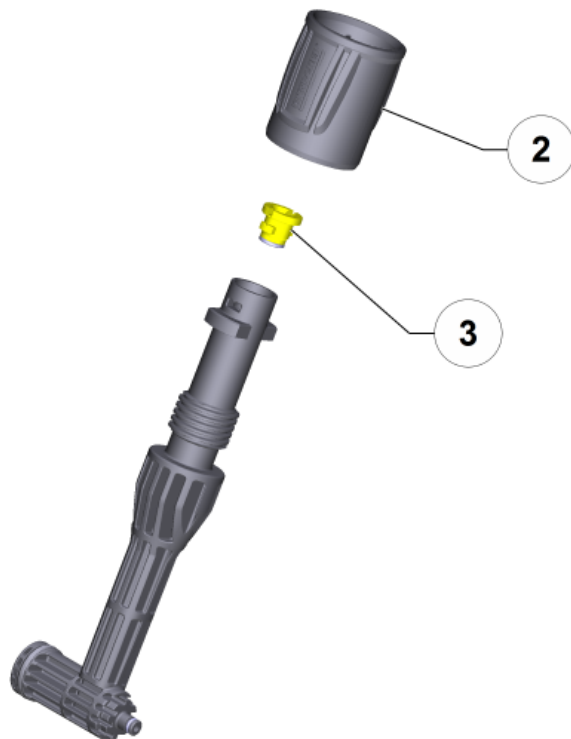
Pos	Material #	Name	Qty.	Unit
2	5.037-151.0	Clamp	2.000	ST
5	6.363-608.0	O-Ring seal 15 x 1,5 -NBR90	2.000	ST
6	6.362-661.0	O-Ring seal 5,0 X 1,0-NBR 80	2.000	ST



4 Bearing support completely T 400

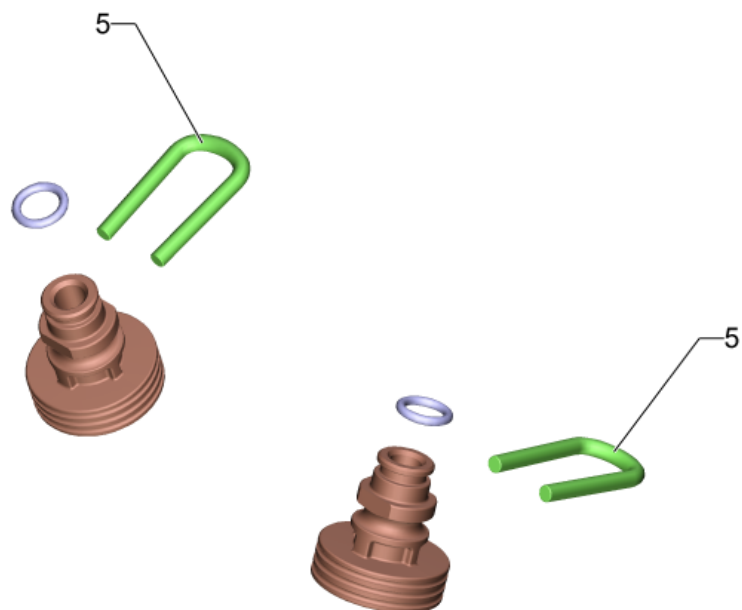
ET/VT (spare/wear parts)	Pos	Material #	Name	Qty.	Unit
	1		Adapter complete	1.000	ST
X	2	2.643-338.0	Spare parts nozzles T-Racer	1.000	ST

1 Adapter complete



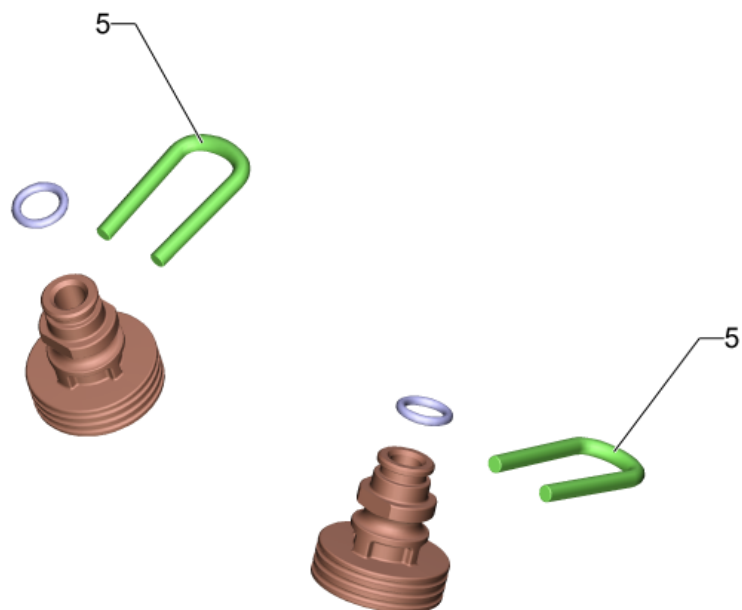
1 Adapter complete

ET/VT (spare/wear parts)	Pos	Material #	Name	Qty.	Unit
	2	5.310-160.0	Nut Kaercher	1.000	ST
X-X	3	2.640-729.0	O-Ring seal set	1.000	ST



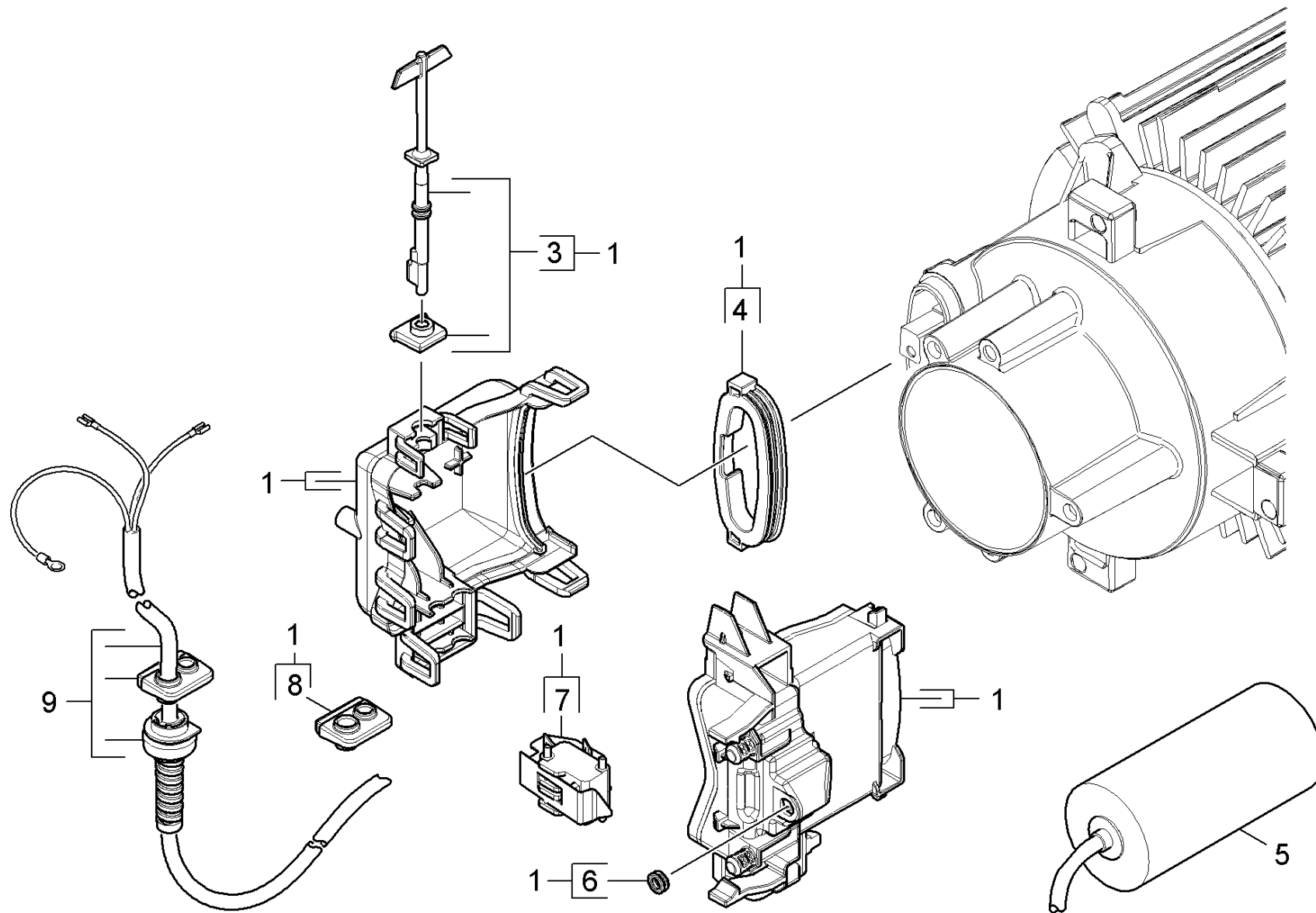
2 Spare parts nozzles T-Racer (2.643-338.0)

Pos	Material #	Name	Qty.	Unit
5	5.037-151.0	Clamp	2.000	ST



5 Spare parts nozzles T-Racer (2.643-338.0)

Pos	Material #	Name	Qty.	Unit
5	5.037-151.0	Clamp	2.000	ST



50 Electric box

ET/VT (spare/wear parts)	Pos	Material #	Name	Qty.	Unit
X-X	1	2.885-189.0	Spare parts set electric box	1.000	ST
	3	2.885-190.0	Selector shaft spare parts set	1.000	ST
	4	5.363-761.0	Seal label	1.000	ST
X	5	6.661-301.0	Capacitor with cable 25 µF (K6)	1.000	ST
Position text: 1.168-603.0 /-609.0					
X-X	5	6.661-288.0	Capacitor 40 µF mit Kabel (K6/7)	1.000	ST
Position text: 1.168-600.0 /-601.0 /-602.0 /-604.0/-605.0 /-606.0 /-607.0 /-608.0 /-610.0					
	6	5.363-749.0	Seal control piston	1.000	ST
X-X	7	6.961-000.0	Micro switch	1.000	ST
	8	5.363-744.0	Seal cable	1.000	ST
	9	6.649-902.0	Cable with plug *CH	1.000	ST
Position text: 1.168-603.0 /-609.0					
X-X	9	6.649-740.0	Cable with plug *EU	1.000	ST
Position text: 1.168-601.0 /-602.0 /-604.0 /-607.0/-608.0 /-610.0					
	9	6.649-894.0	Cable with plug *GB	1.000	ST
Position text: 1.168-605.0 /-606.0					