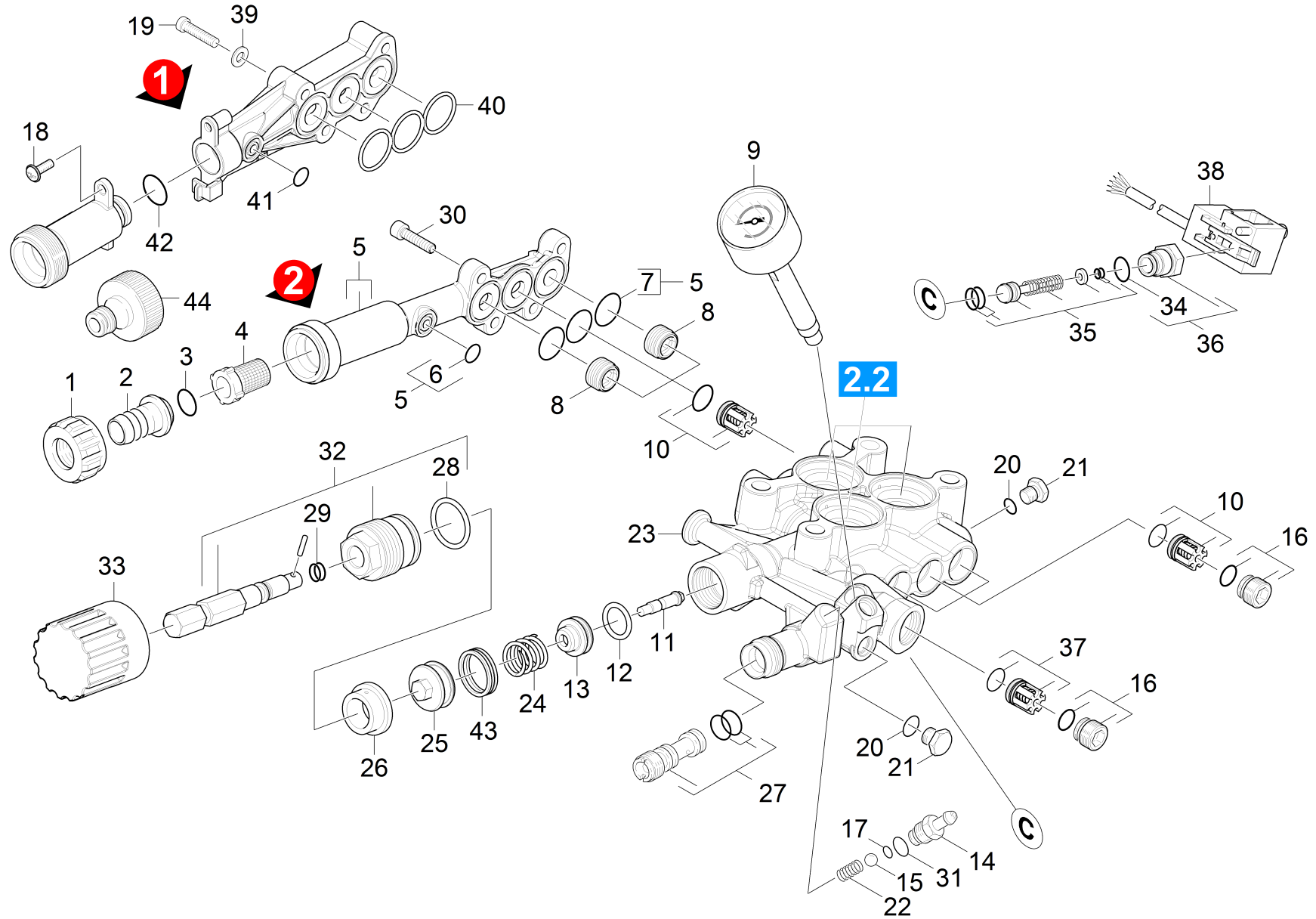


2.1 Cylinder head

Overview technical documents/Professional/High pressure cleaner cold water/Electric motor/HD 7/11-4 M Plus *GB (1.524-129.0)/Spare parts list high-pressure 7/11-4M G/20 Pump set/21 Cylinder head



21 Cylinder head

Overview technical documents/Professional/High pressure cleaner cold water/Electric motor/HD 7/11-4 M Plus *GB (1.524-129.0)/Spare parts list high-pressure 7/11-4M G/20 Pump set/21 Cylinder head

Rez.daļas/nodil.pakļ.daļas	Poz.	Materiāla Nr.	Nosaukums	Daudzums	Pārdoš. vienība
	1	5.310-076.0	Uzgrieznis	1.000	ST
	2	5.443-291.0	Caurules nipelis	1.000	ST
	3	6.362-161.0	Gredzenblīve 19,3 X 2,4	1.000	ST
X	4	6.414-141.0	Sieta filtrs	1.000	ST
	5	4.064-005.0	Suction cover complete	1.000	ST
	6	6.362-388.0	Gredzenblīve 8,0x1,5 -EPDM 70	1.000	ST
X-X	7	6.362-547.0	Gredzenblīve 20,0x1,5-NBR 70	3.000	ST
	8	5.583-177.0	Vārsta skrūve M20x1	2.000	ST
X-X	9	4.423-024.0	Pressure gauge from 4.422-011.0	1.000	ST
X-X	10	2.884-512.0	Valve (3 Stueck)	2.000	ST
	11	5.305-264.0	Shaped screw	1.000	ST
	12	6.362-169.0	Gredzenblīve 12,0 X 2,0	1.000	ST
	13	5.581-230.0	Valve seat	1.000	ST
	14	5.443-624.0	Nipelis	1.000	ST
	15	7.401-908.0	Sfēra 7 G300 -1.4301 DIN 5401	1.000	ST
	16	4.483-001.0	Valve screw	4.000	ST
X	17	6.363-597.0	O-Ring seal 5,28 x 1,78	1.000	ST
	18	7.303-108.0	Skrūve 5x20 -10.9-R2R (In6Rd)	1.000	ST
	19	7.306-025.0	Cylinder head screw M 6x35-8.8-A2E ISO4	4.000	ST
	20	6.362-690.0	Gredzenblīve 7x2 - NBR 70	1.000	ST
	21	5.411-070.0	Vītņtapa	1.000	ST
	22	5.332-258.0	Spirālveida atspere	1.000	ST
	23	4.550-973.0	Spare part set cylinder head	1.000	ST
	24	5.332-425.0	Helical spring	1.000	ST
	25	5.553-390.0	Piston	1.000	ST

21 Cylinder head

Overview technical documents/Professional/High pressure cleaner cold water/Electric motor/HD 7/11-4 M Plus *GB (1.524-129.0)/Spare parts list high-pressure 7/11-4M G/20 Pump set/21 Cylinder head

Rez.daļas/nodil.pakļ.daļas	Poz.	Materiāla Nr.	Nosaukums	Daudzums	Pārdoš. vienība
	26	5.110-630.0	Uzmava	1.000	ST
	27	4.769-052.0	Nozzle insert complete	1.000	ST
	28	6.362-989.0	Gredzenblīve 18x2 - NBR 80	1.000	ST
X	29	6.362-468.0	Gredzenblīve, pilns komplekts 1ST.-R.	1.000	ST
	30	7.306-023.0	cylinder head screw	4.000	ST
	31	6.362-690.0	Gredzenblīve 7x2 - NBR 70	1.000	ST
	32	4.401-079.0	Screw connector part	1.000	ST
X	33	5.322-095.0	Handhold yellow RAL 1018	1.000	ST
X	34	6.363-615.0	O-Ring seal 11 x 1,5 -NBR70	1.000	ST
X-X	35	2.884-501.0	Spare part set control piston	1.000	ST
X-X	36	5.411-535.0	Screw plug	1.000	ST
X-X	37	4.580-594.0	Valve complete	1.000	ST
X-X	38	6.635-493.0	Divfāzu slēdzis	1.000	ST
X-X	39	7.312-026.0	Washer 6-A2 ISO 7090	4.000	ST
	40	5.365-371.0	Profile gasket	1.000	ST
	41	6.363-516.0	O-Ring seal 8,5x2	1.000	ST
X-X	42	6.362-481.0	Gredzenblīve 14,0 x 2,0 NBR 80	1.000	ST
	43	6.362-454.0	Gredzenblīve, pilns komplekts 2ST.-R.	1.000	ST
	44		Tap adaptor complete G1"	1.000	ST