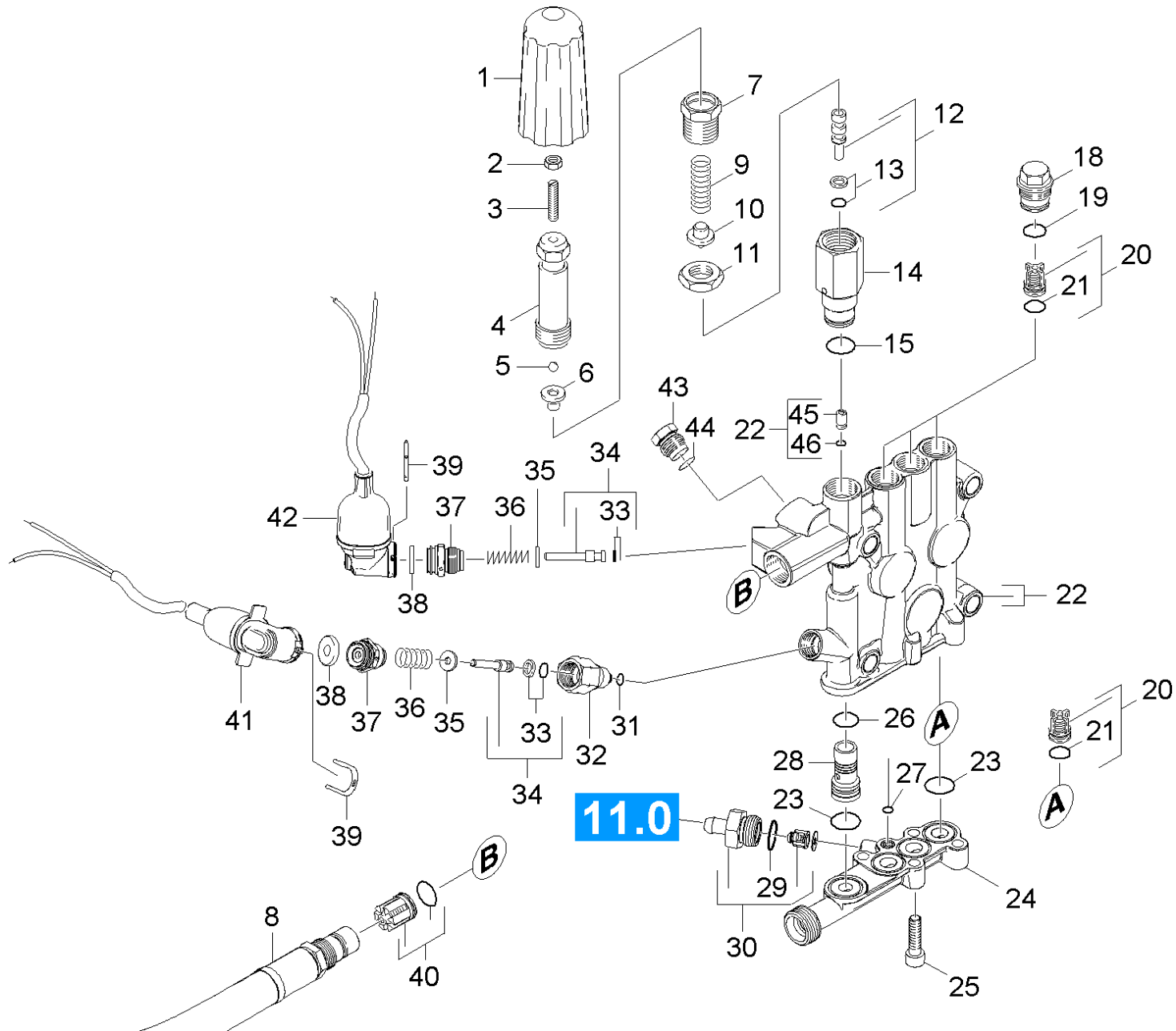


# 21 Cylinder head

Professional \ High pressure cleaner hotwater \ Electric motor \ HDS 10/20-4 M Classic \*EU-I \ Spare parts list HDS 10/20 -4M CLASSIC \* \ Pump set \ Cylinder head



## 21 Cylinder head

Professional \ High pressure cleaner hotwater \ Electric motor \ HDS 10/20-4 M Classic \*EU-I \ Spare parts list HDS 10/20 -4M CLASSIC \* \ Pump set \ Cylinder head



POS	Article no.	Description	Quantity	Unit
14	5.402-746.0	Connection piece	1.000	ST
22	4.550-886.0	Cylinder head complete	1.000	ST
25	7.306-043.0	Cylinder head screw M8x30 -8.8-A2E ISO	4.000	ST
38	5.367-030.0	Diaphragm	2.000	ST
1	5.322-103.0	Handle	1.000	ST
36	5.332-268.0	Helical spring	2.000	ST
9	5.332-444.0	Helical spring	1.000	ST
4	5.304-070.0	Hexagonal head screw	1.000	ST
2	7.311-002.0	Hexagon nut M5 -8-A2E ISO 4032	1.000	ST
11	5.311-204.0	Hexagon nut M22x1,5	1.000	ST
8	6.391-629.0	High pressure hose DN 13	1.000	ST
7	5.404-082.0	Hollow screw	1.000	ST
32	5.402-705.3	Joining piece	1.000	ST
24	5.427-418.0	Manifold water intake	1.000	ST
31	6.362-853.0	O-Ring seal 4,47x1,78	1.000	ST
46	6.362-386.0	O-Ring seal 5,0 x 1,5-NBR 80	1.000	ST
27	6.362-703.0	O-Ring seal 6,0x1,5-NBR 70	1.000	ST
44	6.362-176.0	O-Ring seal 6,07x1,78	1.000	ST
21	6.363-003.0	O-Ring seal 13,0 X 2,0-NBR 90	6.000	ST
26	6.362-381.0	O-Ring seal 13x2 - NBR 70	1.000	ST
19	6.362-481.0	O-Ring seal 14,0 x 2,0 NBR 80	3.000	ST
29	6.362-427.0	O-Ring seal 15,0x2,0	1.000	ST
15	6.362-427.0	O-Ring seal 15,0x2,0	1.000	ST
23	6.363-536.0	O-Ring seal 21x1,5	4.000	ST
13	6.362-468.0	O-Ring seal complete 1ST.-R.	1.000	ST
33	6.363-037.0	O-Ring seal complete 1ST.-R.	2.000	ST
12	4.553-287.0	Piston complete	1.000	ST
34	4.553-197.0	Piston complete only for replacement	2.000	ST
39	5.034-494.0	Retaining bracket	2.000	ST
43	5.411-504.0	Screw plug	1.000	ST
37	5.411-148.0	Screw plug	2.000	ST
28	5.110-865.0	Sleeve	1.000	ST
100	2.885-034.0	Spare part set pump	1.000	ST

## 21 Cylinder head

Professional \ High pressure cleaner hotwater \ Electric motor \ HDS 10/20-4 M Classic \*EU-I \ Spare parts list HDS 10/20 -4M CLASSIC \* \ Pump set \ Cylinder head

**KÄRCHER**

POS	Article no.	Description	Quantity	Unit
5	7.401-931.0	Sphere 5 KI3 -1.4401 DIN 5401	1.000	ST
42	4.744-224.0	Switch complete	1.000	ST
41	4.744-225.3	Switch complete	1.000	ST
3	7.307-017.0	Threaded pin M5x40 -St-45H-A2E ISO 4026	1.000	ST
20	2.884-512.0	Valve (3 Stueck)	2.000	ST
40	4.580-594.0	Valve complete	1.000	ST
30	4.580-581.3	Valve complete	1.000	ST
6	5.582-121.0	Valve disc	1.000	ST
10	5.584-114.0	Valve pin	1.000	ST
18	5.583-146.3	Valve screw	3.000	ST
45	5.581-239.0	Valve seat	1.000	ST
35	5.115-796.0	Washer	2.000	ST