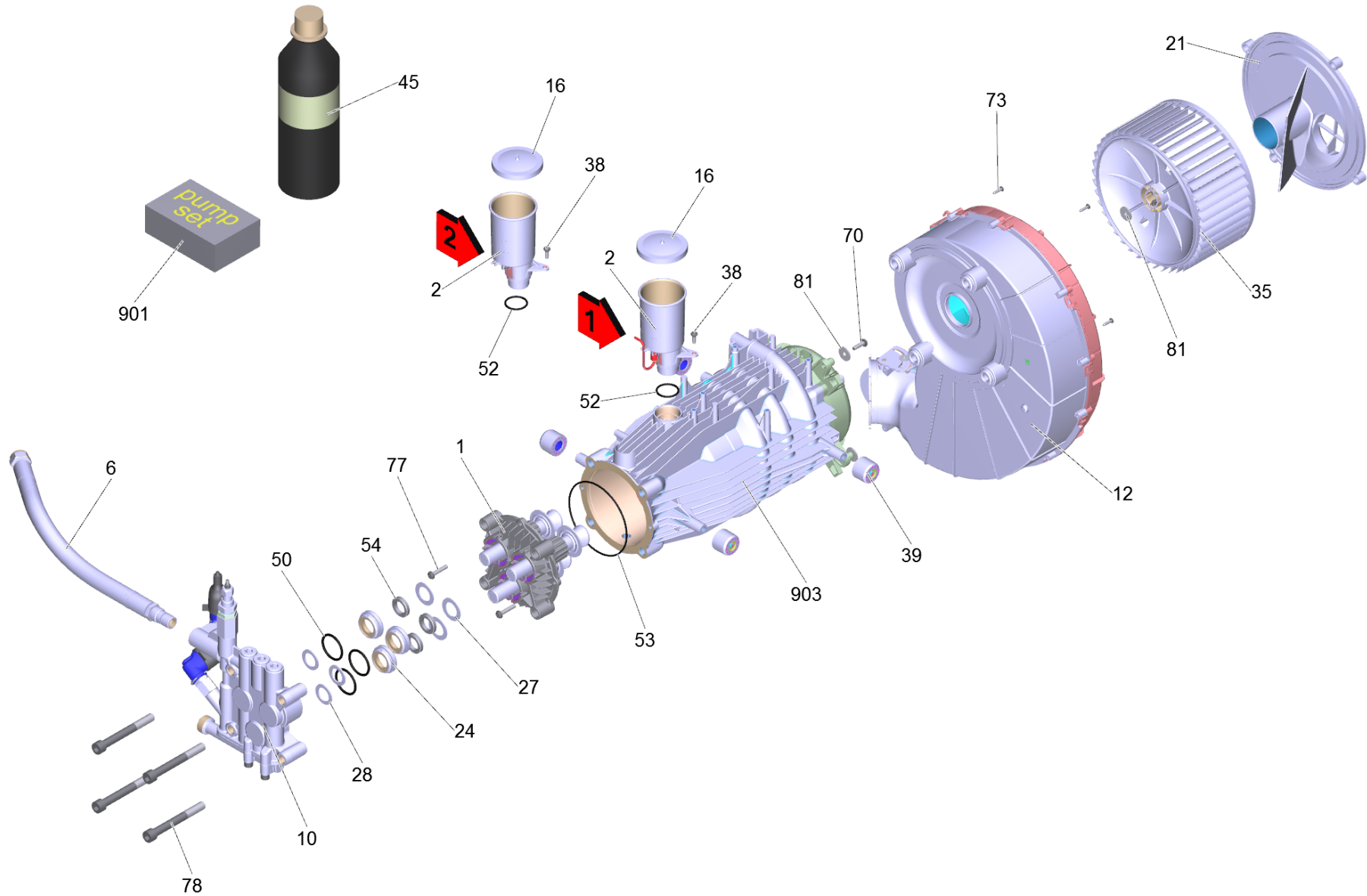


# 5 Motor pump

Professional \ High pressure cleaner hotwater \ Electric motor \ HDS 13/20-4 SX \*EU-I \ Spare parts list HDS 13/20-4SX \*EU-I \ Motor pump



## 5 Motor pump

Professional \ High pressure cleaner hotwater \ Electric motor \ HDS 13/20-4 SX \*EU-I \ Spare parts list HDS 13/20-4SX \*EU-I \ Motor pump

**KÄRCHER**

POS	Article no.	Description	Quantity	Unit	Foot note text
1		Thrust guidance complete	1	PC	
2	4.070-904.0	Tank only for replacement	1	PC	VERSION 1
2	5.070-736.0	Tank oil	1	PC	VERSION 2
6	6.391-629.0	High pressure hose DN 13	1	PC	
10		Cylinder head complete	1	PC	
12	4.605-106.0	Housing blower complete	1	PC	
16	5.064-459.0	Cover grey	1	PC	
21	5.064-266.0	Cover blower internal part	1	PC	
24	5.112-414.3	Bush	3	PC	
27	5.115-520.0	Washer	3	PC	
28	5.115-521.0	Washer	3	PC	
35	2.644-230.0	Conversion kit blower wheel	1	PC	
38	6.303-153.0	Screw M5x15-ST-R2R (In6RD)	1	PC	
39	5.767-005.0	Rubber buffer	4	PC	
45	6.288-016.0	Gear oil 1L	1	PC	
50	6.362-092.0	O-Ring seal 36,0 X 2,0-NBR 70	3	PC	
52	6.362-722.0	O-Ring seal 28,0 X 3,0	1	PC	
53	6.363-228.0	O-Ring seal 114 x 3	1	PC	
54	6.365-056.0	Compact seal 22X32X6	3	PC	
70	7.303-048.0	Screw M6x20 -St-R3R (In6Rd)	4	PC	
73	7.303-205.0	Screw 4x16-St-10.9-R2R (In6Rd)	4	PC	
77	7.306-105.0	Screw M6x30 -8.8-R3R (In6Rd)	2	PC	
78	7.306-155.0	Cylinder head screw M12x100 -8.8-A3E IS	4	PC	
81	7.312-260.0	Washer 6 -100HV-A3E ISO 7094	5	PC	
901	2.885-033.0	Spare part set pump	1	PC	
903	4.623-921.0	Motor complete only for replacement	1	PC	