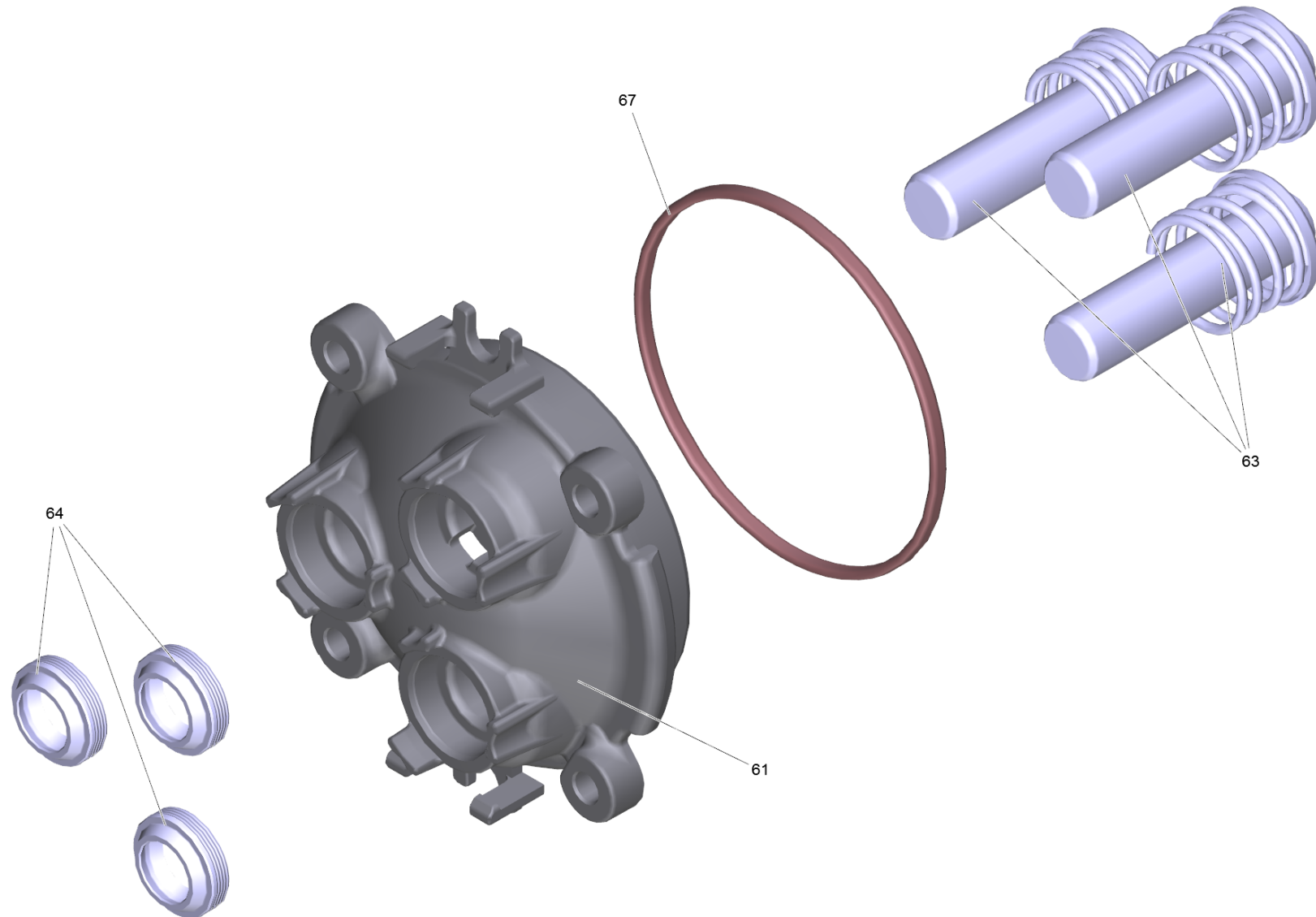


## 43 Thrust guidance complete quadruple

Home and Garden \ High pressure cleaner cold water \ Electric motor \ K 2 \ K 2 Basic \*EU \ Spare parts list K2 Basic \*EU (2017) \ Pump set RV upr. K2 \*EU (0,75kW) QC \ Cylinder head for replacement (981) RV \ Cylinder head c  
guidance complete quadruple



## 43 Thrust guidance complete quadruple

Home and Garden \ High pressure cleaner cold water \ Electric motor \ K 2 \ K 2 Basic \*EU \ Spare parts list K2 Basic \*EU (2017) \ Pump set RV upr. K2 \*EU (0,75kW) QC \ Cylinder head for replacement (981) RV \ Cylinder head c  
guidance complete quadruple

**KÄRCHER**

POS	Article no.	Description	Quantity	Unit
64	6.365-581.0	Grooved ring 12x18x4/6 NBR 75 Shore A	3.000	ST
67	6.362-826.0	O-Ring seal 61,6x2,62	1.000	ST
63	2.885-398.0	Spare parts set piston with spring RV	1.000	ST
61	5.062-412.0	Thrust guidance V2 R V	1.000	ST