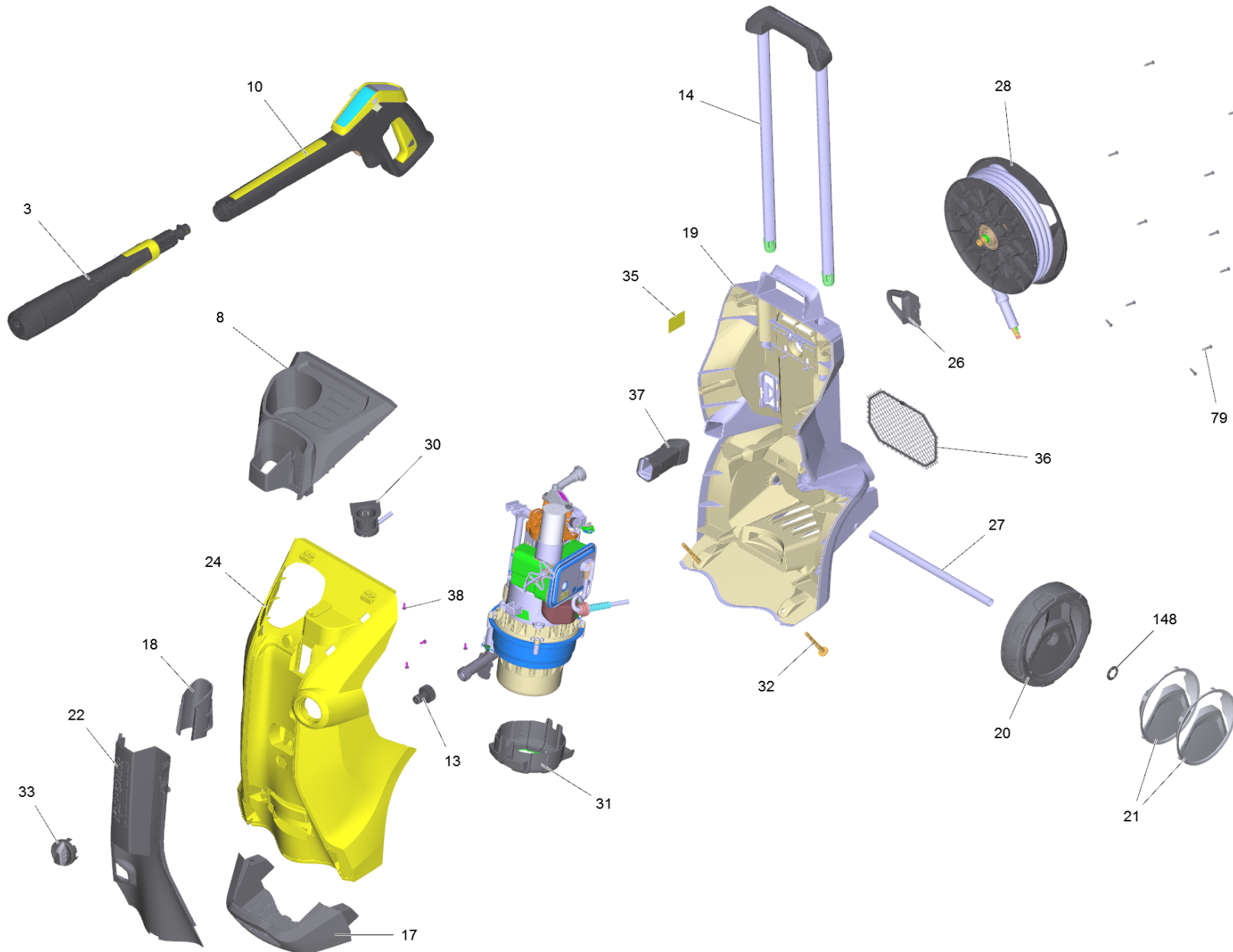


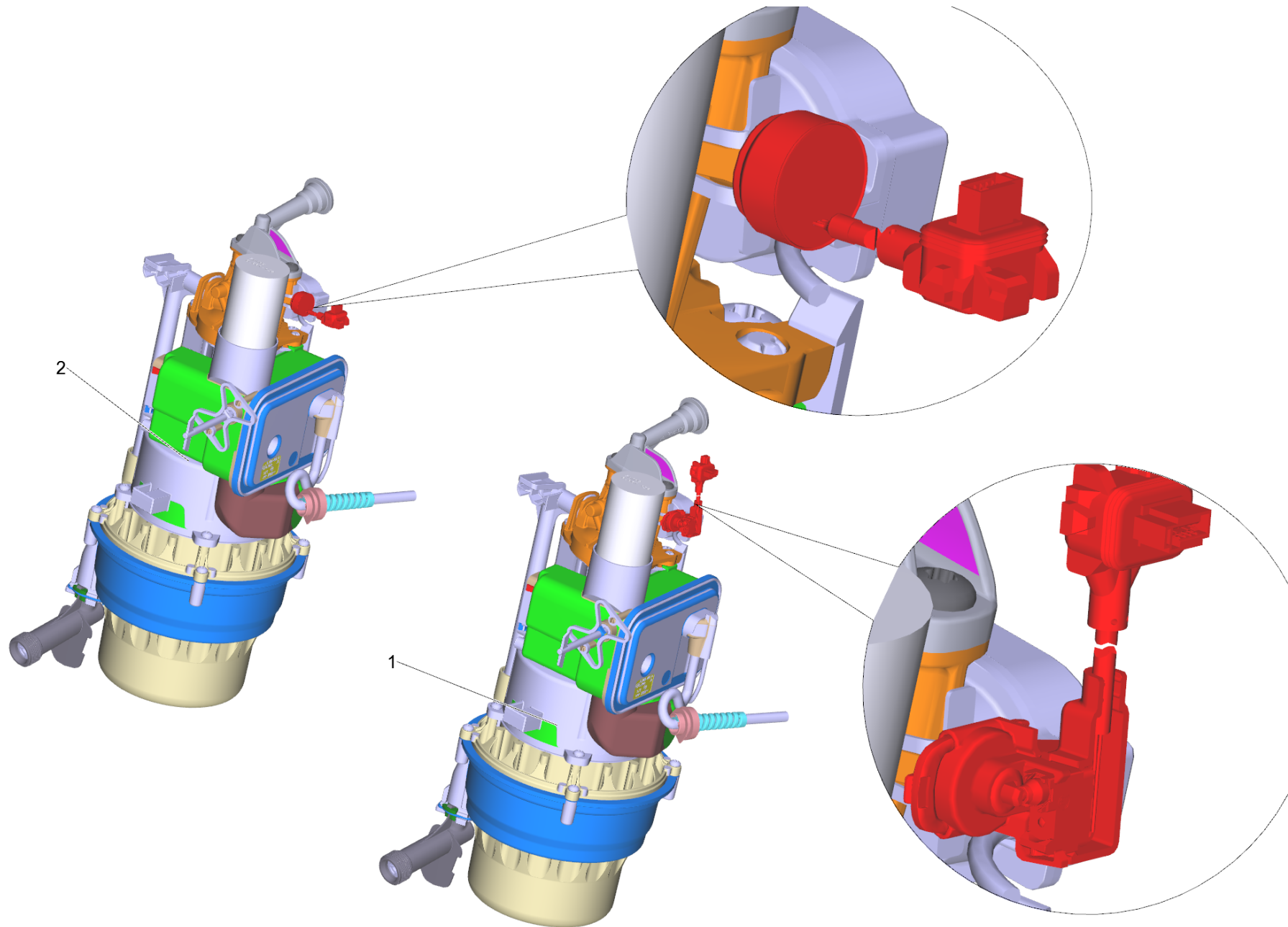
1000 Spare parts list K7 FC Premium *EU (5.973-673.0)

Home and Garden \ High pressure cleaner cold water \ Electric motor \ K 7 \ K 7 Premium Full Control Plus *EU \ Spare parts list K7 FC Premium *EU



1000 Spare parts list K7 FC Premium *EU (5.973-673.0)

Home and Garden \ High pressure cleaner cold water \ Electric motor \ K 7 \ K 7 Premium Full Control Plus *EU \ Spare parts list K7 FC Premium *EU



1000 Spare parts list K7 FC Premium *EU (5.973-673.0)

Home and Garden \ High pressure cleaner cold water \ Electric motor \ K 7 \ K 7 Premium Full Control Plus *EU \ Spare parts list K7 FC Premium *EU



POS	Article no.	Description	Quantity	Unit	Foot note text
33	9.048-123.0	2K KNOB black	1	PC	
27	5.105-361.0	Axle L=310	1	PC	
32	5.317-896.0	Bolt stand foot	2	PC	
19	5.044-331.3	Chassis rear	1	PC	
13	6.465-031.0	Connection 3/4	1	PC	
8	5.044-342.0	Covering cap above	1	PC	
24	5.052-006.3	Cover K7 FC	1	PC	
10	4.775-111.3	G 180 Q Full Control *EU	1	PC	VERSION 2
		Item text1: to Pump set Pos.1 // zu Pumpensatz Pos.1			
10	4.775-111.3	G 180 Q Full Control *EU	1	PC	VERSION 1
		Item text1: to Pump set Pos.2 // zu Pumpensatz Pos.2			
36	9.038-490.3	Grid accessories	1	PC	
14		Handhold complete	1	PC	
18	5.044-486.0	Holder accessories	1	PC	
31	5.322-164.0	Holder pump set	1	PC	
37	5.322-167.0	Hose guide	1	PC	
26	5.332-026.0	Hose guide external	1	PC	
28		Hose reel high-pressure complete (18MPa)	1	PC	
148	6.343-168.0	Lock washer	2	PC	
3	2.643-907.0	MJ 180 3-in-1 Multi Jet Full Control	1	PC	
2		Pump set complete K7 *EU 2017	1	PC	VERSION 1
1		Pump set complete K7 FC *EU 2017 (DS)	1	PC	VERSION 2
30	9.013-417.0	RM retainer station compl. FC	1	PC	
22	5.052-007.3	Screen front	1	PC	
79	6.303-150.0	Screw 4,2x 22	11	PC	
38	7.303-106.0	Screw 4x12 -10.9-R2R (IN6RD)	4	PC	
21	2.885-473.0	Spare parts set screen wheel	1	PC	
17	5.044-343.0	Stand foot	1	PC	
35	5.387-620.0	Warning sign new	1	PC	
20	5.515-071.0	Wheel D200	2	PC	