

## **Spare parts list**

(1.198-105.0) VC 2 \*EU-I

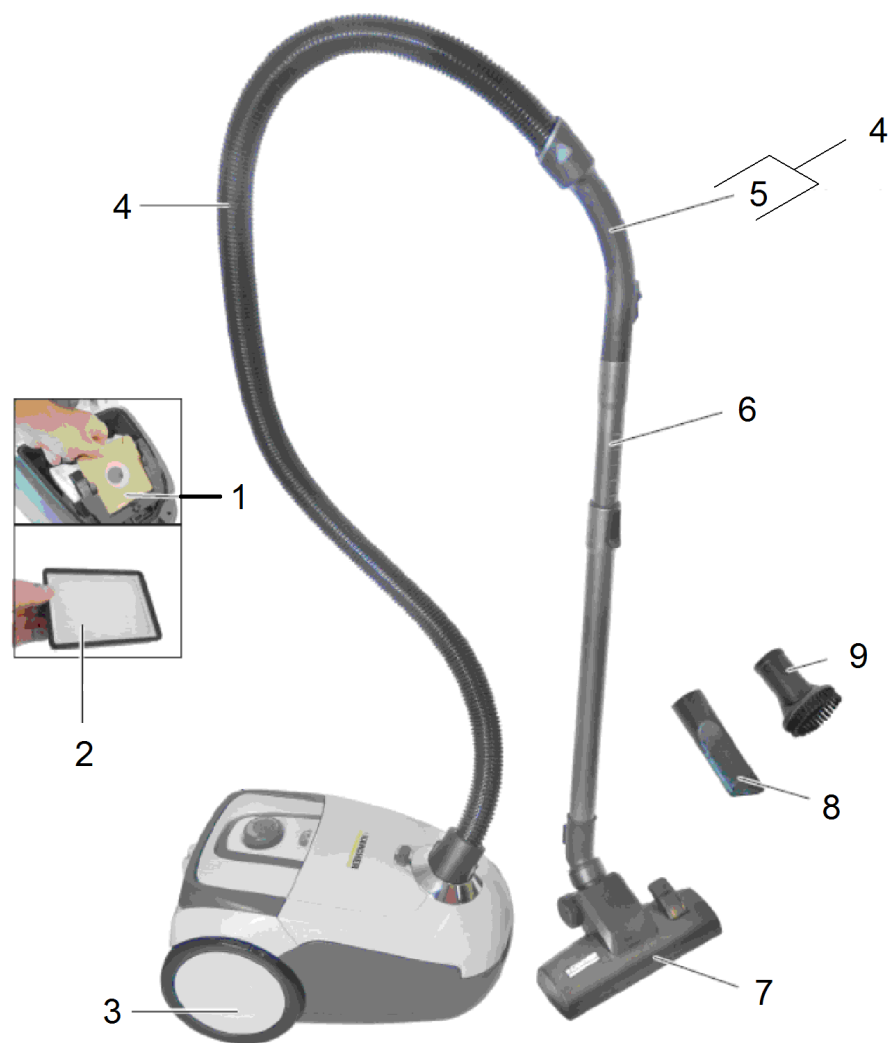
## Table of contents

---

VC 2 *EU-I (1.198-105.0)	3
Short spare parts list	4
4 Suction hose complete (9.754-017.0)	6
Spare parts list VC 2 *EU-I (9.764-424.0)	8
12 Suction hose complete (9.754-017.0)	12

VC 2 \*EU-I (1.198-105.0)

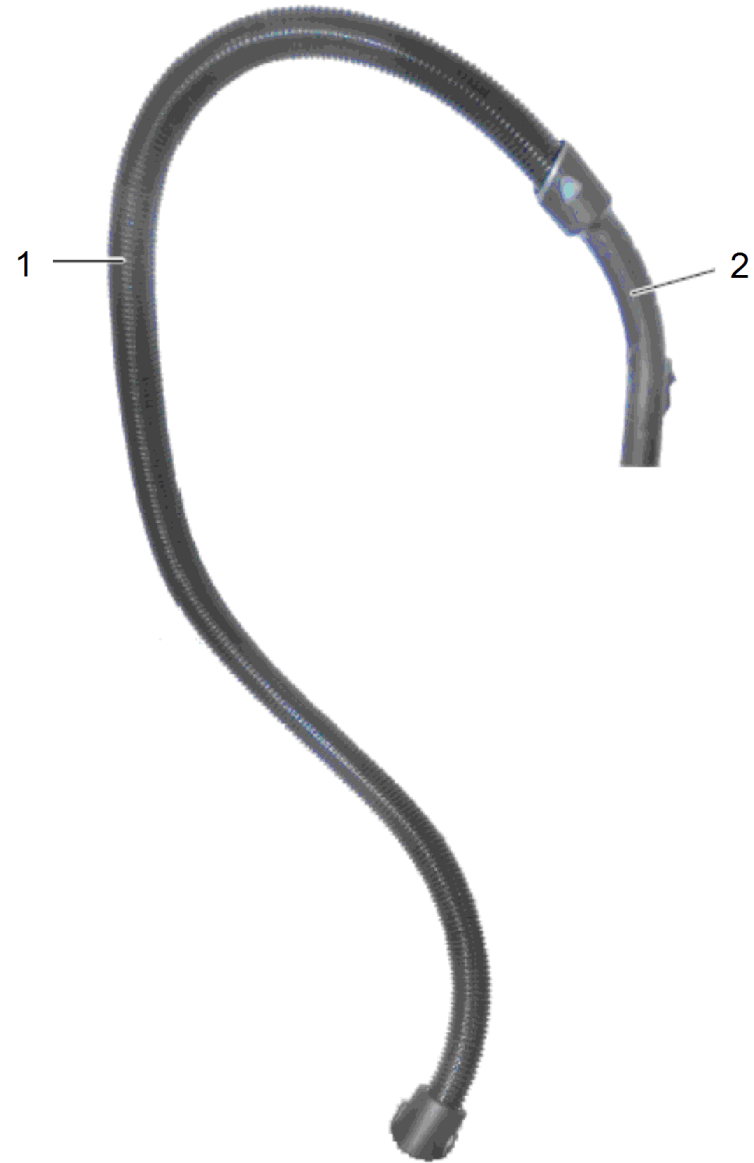
POS	Article no.	Description	Quantity	Unit
0		Declaration of conformity VC 2/VC 2 Prem	1.000	ST
50		Operating manual VC 2 *EU / VC 2 Premium	1.000	ST
0		Short spare parts list	1.000	ST
0	9.764-424.0	Spare parts list VC 2 *EU-I	1.000	ST



## Short spare parts list

---

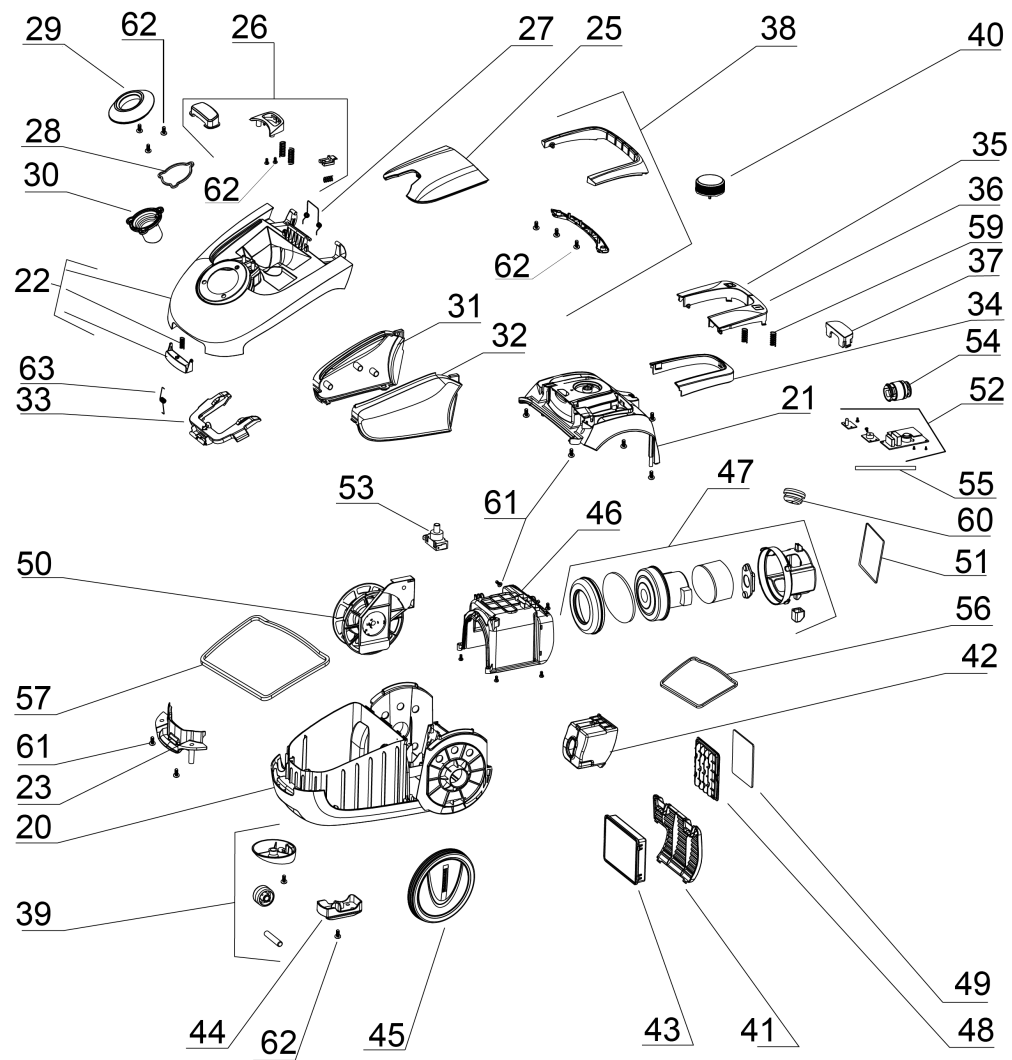
<b>POS</b>	<b>Article no.</b>	<b>Description</b>	<b>Quantity</b>	<b>Unit</b>
8	9.764-089.0	Crevice nozzle	1.000	ST
1	2.863-236.0	Filter bags fleece set 5 St.	1.000	ST
2	2.863-237.0	Filter packaged HEPA 13 VC 2	1.000	ST
7	9.754-071.0	Floor tool printed DS-009	1.000	ST
5	4.195-222.0	Hand tube complete DS 5.800	1.000	ST
9	9.754-007.0	Round brush	1.000	ST
4	9.754-017.0	Suction hose complete	1.000	ST
6	9.764-088.0	Telescopic tube 90cm	1.000	ST
3	9.754-091.0	Wheel yellow 2-K	1.000	ST



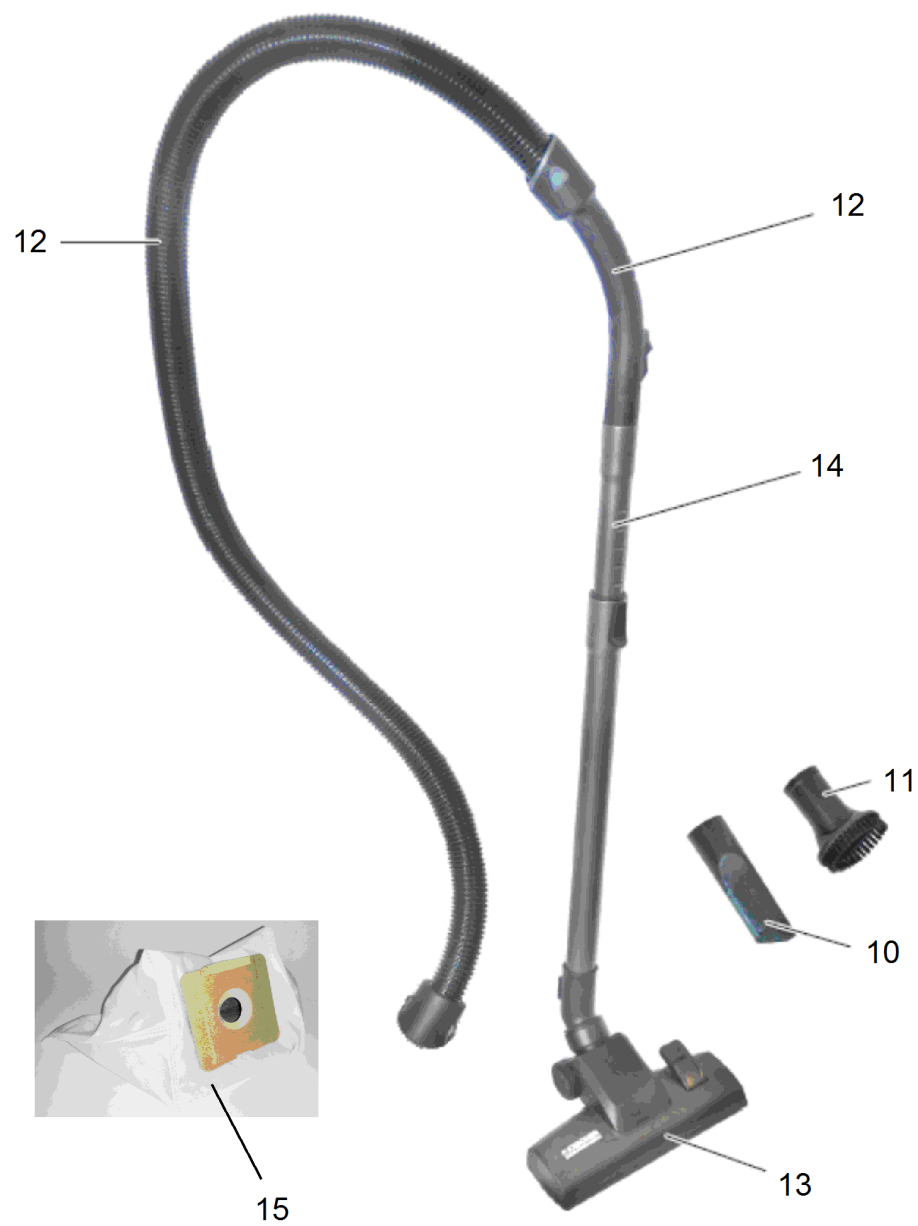
4 Suction hose complete (9.754-017.0)

---

<b>POS</b>	<b>Article no.</b>	<b>Description</b>	<b>Quantity</b>	<b>Unit</b>
2	4.195-222.0	Hand tube complete DS 5.800	1.000	ST
1	9.754-013.0	Hose complete	1.000	ST







## Spare parts list VC 2 \*EU-I (9.764-424.0)

POS	Article no.	Description	Quantity	Unit
25	9.754-094.0	Accessories flap yellow printed	1.000	ST
50	9.754-025.0	Cable automatic VC 2 *KAP *EU 2x1,0	1.000	ST
20	9.764-160.0	Chassis black	1.000	ST
52	9.754-114.0	Circuit board packaged 700W VC 2	1.000	ST
26	9.754-105.0	Covering cap accessories complete black	1.000	ST
32	9.764-050.0	Covering cap left grey	1.000	ST
31	9.764-049.0	Covering cap right grey	1.000	ST
29	9.764-047.0	Covering cap suction connection chromed	1.000	ST
37	9.764-055.0	Covering cap transparent	1.000	ST
21	9.764-039.0	Cover rear yellow	1.000	ST
10	9.764-089.0	Crevice nozzle	1.000	ST
49	9.764-181.0	Filter air intake	1.000	ST
15	2.863-236.0	Filter bags fleece set 5 St.	1.000	ST
43	2.863-237.0	Filter packaged HEPA 13 VC 2	1.000	ST
13	9.754-071.0	Floor tool printed DS-009	1.000	ST
51	9.764-403.0	Foam sound insulation motor	1.000	ST
34	9.764-052.0	Frame black	1.000	ST
33	9.764-051.0	Frame filter bag black	1.000	ST
22	9.754-375.0	Front cover complete yellow	1.000	ST
41	9.764-059.0	Grate air outlet black	1.000	ST
38	9.754-106.0	Hand grip complete black	1.000	ST
23	9.764-041.0	Hand grip front black	1.000	ST
48	9.764-068.0	Holder filter air intake	1.000	ST
55	9.764-401.0	Hose silicon	1.000	ST
28	9.764-161.0	Joint ring suction connection	1.000	ST
63	9.764-162.0	Leg spring	1.000	ST
47	9.754-118.0	Motor complete 230V 700W	1.000	ST
46	9.764-066.0	Motor housing external	1.000	ST
42	9.764-060.0	Outlet cable black	1.000	ST
62	9.764-404.0	Pan head screw 4*12	4.000	ST
61	9.764-405.0	Pan head screw 4x16	12.000	ST
60	9.764-402.0	Plug cable gland	1.000	ST
35	9.764-053.0	Pushbutton cable automatic yellow	1.000	ST

## Spare parts list VC 2 \*EU-I (9.764-424.0)

POS	Article no.	Description	Quantity	Unit
36	9.764-054.0	Pushbutton yellow on/off	1.000	ST
44	9.764-063.0	Retainer floor nozzle black	1.000	ST
39	9.754-107.0	Roller complete	1.000	ST
40	9.754-095.0	Rotary controller black printed	1.000	ST
11	9.754-007.0	Round brush	1.000	ST
54	9.754-115.0	Safety valve complete 700W	1.000	ST
57	9.764-171.0	Seal dust box	1.000	ST
56	9.764-172.0	Seal motor housing	1.000	ST
27	9.764-164.0	Spring buckle accessories covering cap	1.000	ST
59	9.764-182.0	Spring pushbutton	2.000	ST
30	9.764-048.0	Suction connection black	1.000	ST
12	9.754-017.0	Suction hose complete	1.000	ST
53	9.764-180.0	Switch	1.000	ST
14	9.764-088.0	Telescopic tube 90cm	1.000	ST
45	9.754-091.0	Wheel yellow 2-K	2.000	ST



12 Suction hose complete (9.754-017.0)

---

<b>POS</b>	<b>Article no.</b>	<b>Description</b>	<b>Quantity</b>	<b>Unit</b>
2	4.195-222.0	Hand tube complete DS 5.800	1.000	ST
1	9.754-013.0	Hose complete	1.000	ST