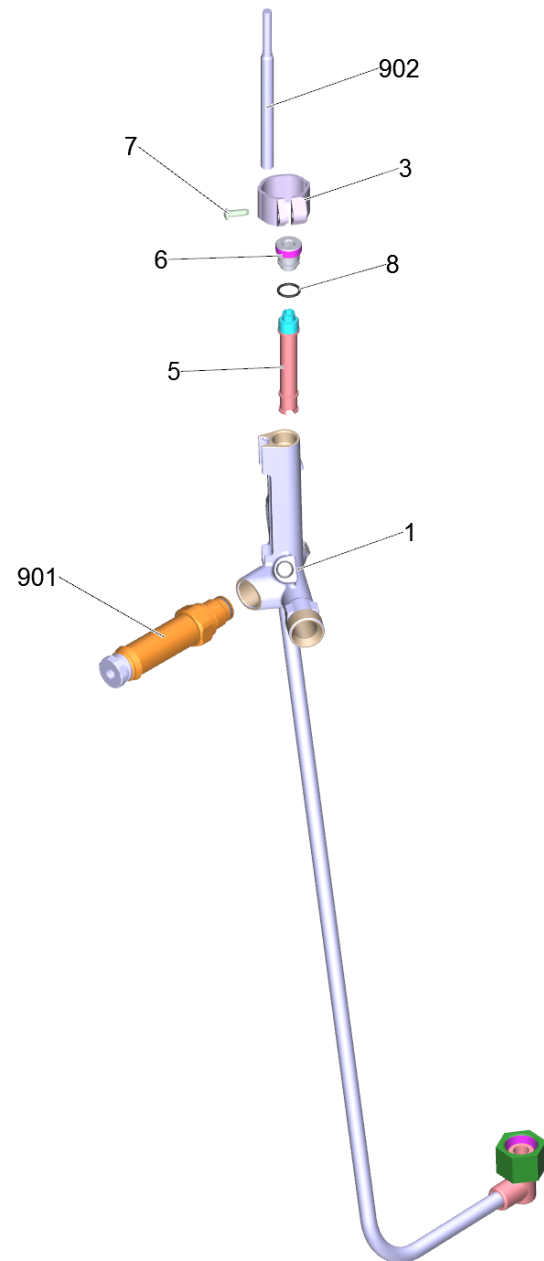


45 Safety system

Professional \ High pressure cleaner hotwater \ Electric motor \ HDS 13/20-4 SX *EU-I \ HDS 13/20-4 SX *EU-I TV 01.01.2018 \ Safety system



45 Safety system

Professional \ High pressure cleaner hotwater \ Electric motor \ HDS 13/20-4 SX *EU-I \ HDS 13/20-4 SX *EU-I TV 01.01.2018 \ Safety system

KÄRCHER

POS	Article no.	Description	Quantity	Unit
5	4.551-058.0	Cartridge protection against water short	1.000	ST
3	5.041-076.0	Clamp	1.000	ST
7	6.303-122.0	M4 .2X13 DIN 7981 TORX T15 PAN HD HI/LO	1.000	ST
1	4.427-039.0	Manifold complete screw plug	1.000	ST
8	6.362-482.0	O-Ring seal 10 x 1,5-NBR 70	1.000	ST
902	2.885-051.0	Reed switch replacement	1.000	ST
901	4.580-709.0	Safety valve complete replacement	1.000	ST
6	5.305-162.0	Shaped screw	1.000	ST