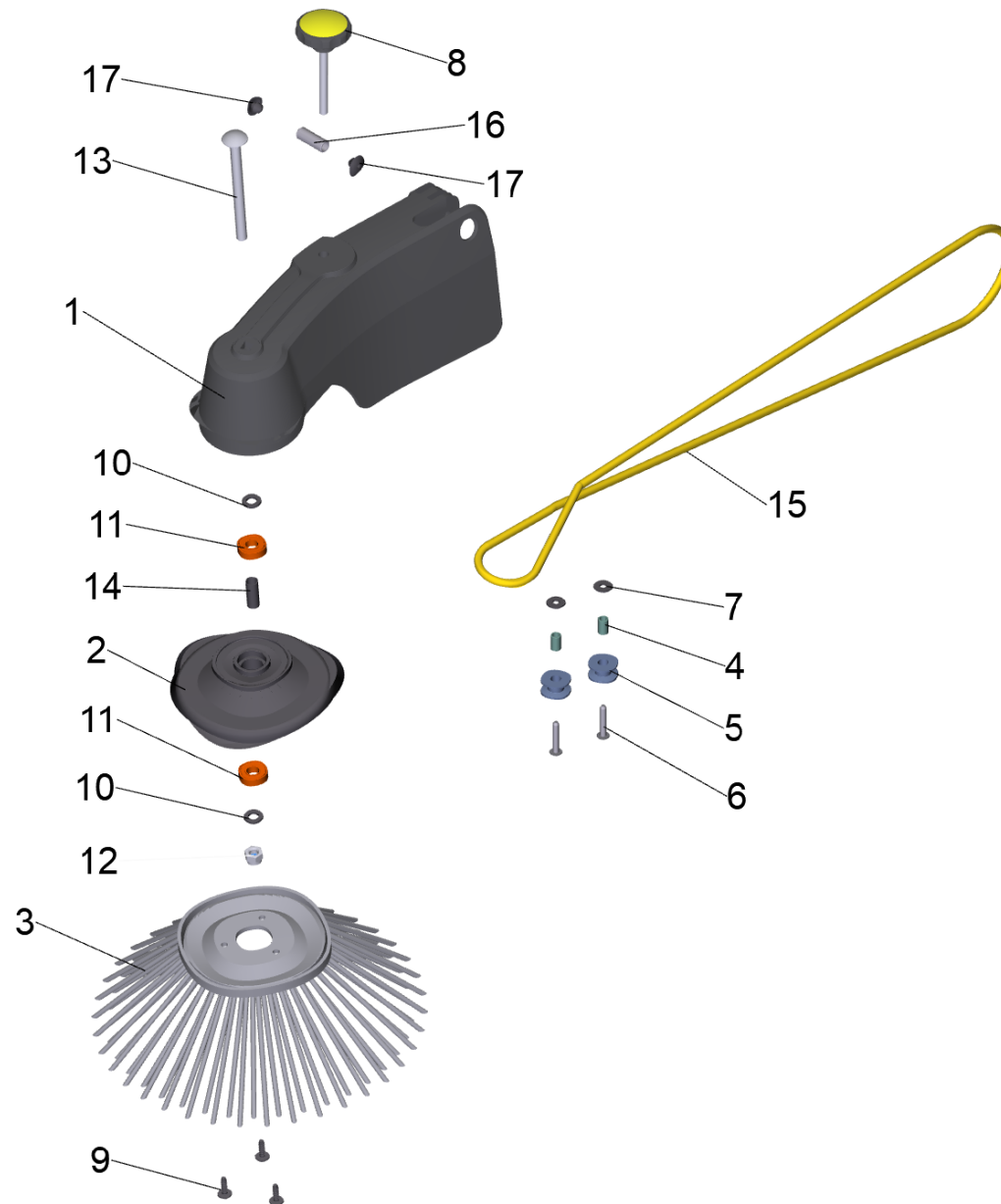


# 30 Arm side broom left KM 70/20C

Professional \ Sweepers \ Manually operated \ KM 70/15 C 2SB \ Arm side broom left KM 70/20C



## 30 Arm side broom left KM 70/20C

Professional \ Sweepers \ Manually operated \ KM 70/15 C 2SB \ Arm side broom left KM 70/20C

**KÄRCHER**

POS	Article no.	Description	Quantity	Unit
3	2.884-935.0	Spare parts set side broom	1	PC
1	5.032-671.0	Arm side broom left	1	PC
16	5.116-119.0	Sleeve	1	PC
9	6.303-092.0	Screw 6X20	3	PC
8	6.321-176.0	Turning knob yellow D55mm	1	PC
15	6.348-020.0	Round belt	1	PC
17	6.385-935.0	Plug	2	PC
11	6.401-363.0	Ball bearing	2	PC
2	6.966-002.0	Flange	1	PC
3	6.966-005.0	Side broom	1	PC
4	6.966-009.0	Tube 10x1,5x16	2	PC
14	6.966-020.0	Spacer sleeve 12x0,8x31	1	PC
5	6.997-622.0	Deflection pulley	2	PC
6	7.303-114.0	Screw 6x35-St-10.9-R2R (In6Rd)	2	PC
13	7.303-208.0	Saucer-head screw M10x130 -St-A0P DIN 603	1	PC
12	7.311-511.0	Hexagon nut M10-8-A2K ISO 7040	1	PC
10	7.312-153.0	Washer 10 -160HV-A3E EN28738	2	PC
7	7.312-276.0	Washer 6-200HV-A2E ISO 7093-1	2	PC