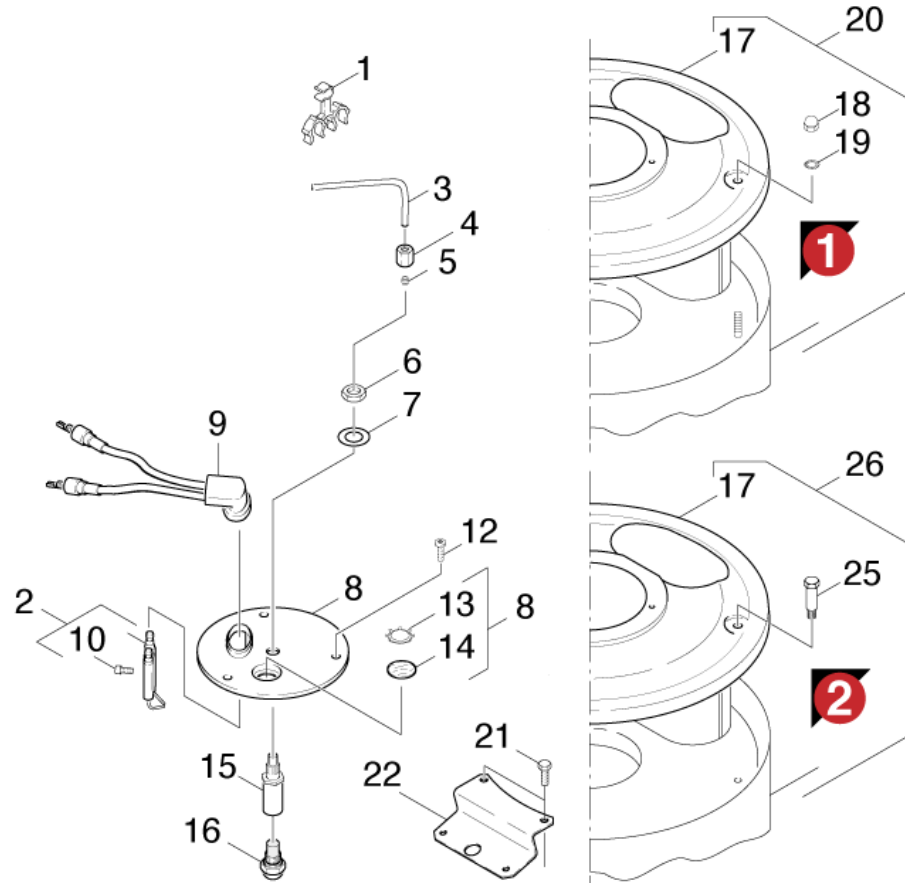


71 Burner cover

Professional \ High pressure cleaner hotwater \ Electric motor \ HDS 600 CI *J \ Spare parts list HDS 600 CI *J \ Flow heater \ Burner cover



71 Burner cover

Professional \ High pressure cleaner hotwater \ Electric motor \ HDS 600 Cl *J \ Spare parts list HDS 600 Cl *J \ Flow heater \ Burner cover



POS	Article no.	Description	Quantity	Unit	Foot note text
18	7.311-380.0	Cap nut M6 -6-A2E DIN 1587	3.000	ST	VERSION 1
3	5.423-140.0	Conduit	1.000	ST	
2	2.638-974.0	Conversion kit ignition electrode	1.000	ST	
17	4.654-196.0	Cover pressure boiler	1.000	ST	
8	4.654-218.0	Cover pressure boiler	1.000	ST	
5	6.389-263.0	Cutting ring d.4	1.000	ST	
14	6.278-018.0	Glass pane	1.000	ST	
6	7.311-101.0	Hexagon nut M10x1 -04-A2E ISO 8675	1.000	ST	
1	6.647-527.0	Holder	1.000	ST	
9	4.821-071.0	IGNITION LEAD (HDS 557Cl)	1.000	ST	
22	5.030-985.0	Moulded part	1.000	ST	
16	6.415-040.0	Nozzle 1,5 60G A	1.000	ST	
15	5.667-055.0	Nozzle holder	1.000	ST	
20	4.652-085.0	Outer covering	1.000	ST	VERSION 1
26	4.652-112.0	Outer covering	1.000	ST	VERSION 2
12	7.303-038.0	Screw M5x12 -St-P2R (In6Rd)	3.000	ST	
10	7.306-217.0	Screw M5x14 -8.8-R2R (In6Rd)	1.000	ST	
21	7.306-090.0	Screw M6x16 -8.8-R3R (In6Rd)	2.000	ST	
25	6.303-258.0	Self-tapping screw	3.000	ST	VERSION 2
13	6.343-165.0	Serrated ring	1.000	ST	
7	7.312-302.0	Spring washer B10-FSt-A2E DIN 137	1.000	ST	
19	7.312-167.0	Toothed lock washer A6,4-FSt-A3E DIN 67	3.000	ST	VERSION 1
4	6.389-262.0	Union nut A 4-LL	1.000	ST	