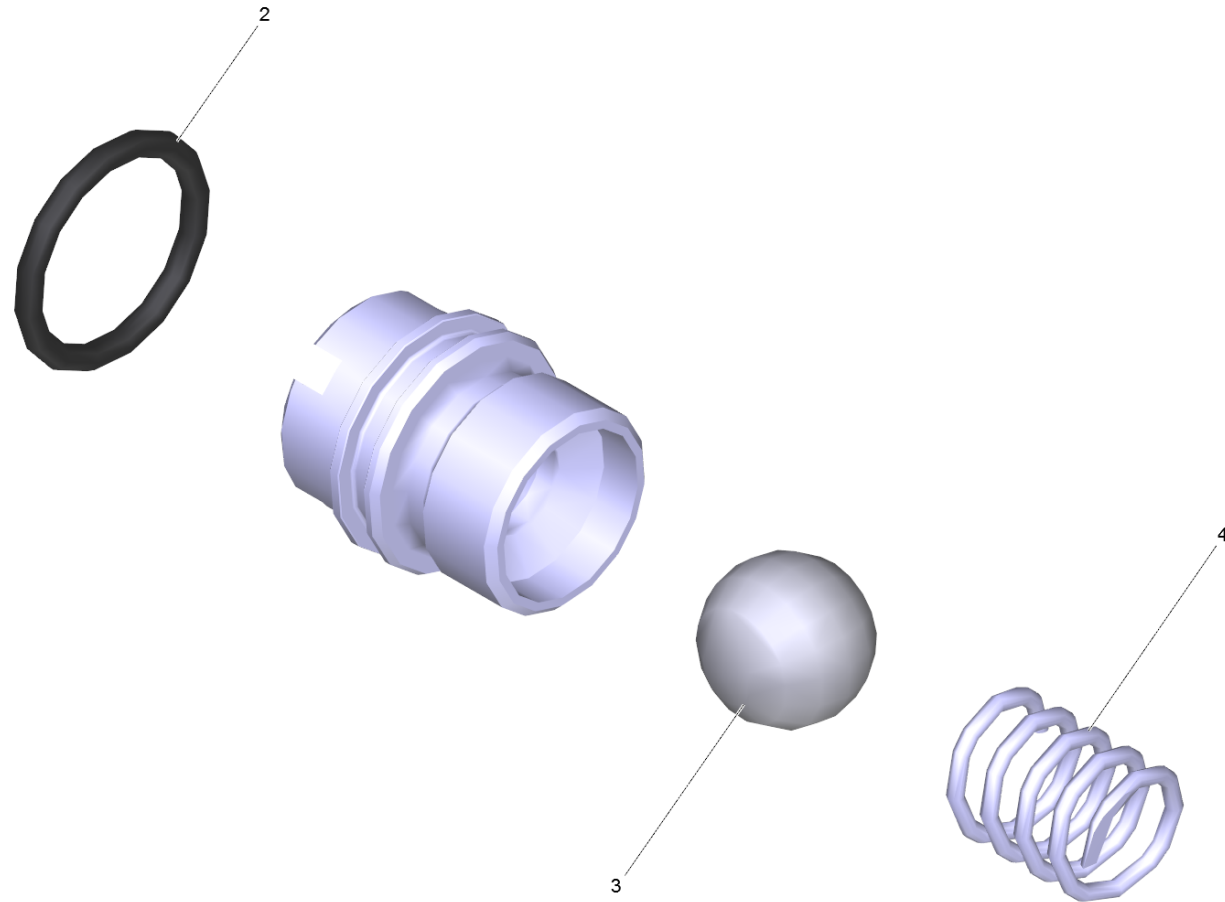


28 Valve seat complete (4.481-226.0)

Professional \ High pressure cleaner cold water \ Electric motor \ HD 9/17 M *JP \ Spare parts list HD 9/19 \ Pump set \ Cylinder head \ Valve seat complete



28 Valve seat complete (4.481-226.0)

Professional \ High pressure cleaner cold water \ Electric motor \ HD 9/17 M *JP \ Spare parts list HD 9/19 \ Pump set \ Cylinder head \ Valve seat complete



POS	Article no.	Description	Quantity	Unit
4	5.332-999.0	Helical spring	1.000	ST
2	6.362-858.0	O-Ring seal 11,0 X 1,5	1.000	ST
3	7.401-907.0	Sphere 3/8 G200-1.4301 DIN 5401	1.000	ST