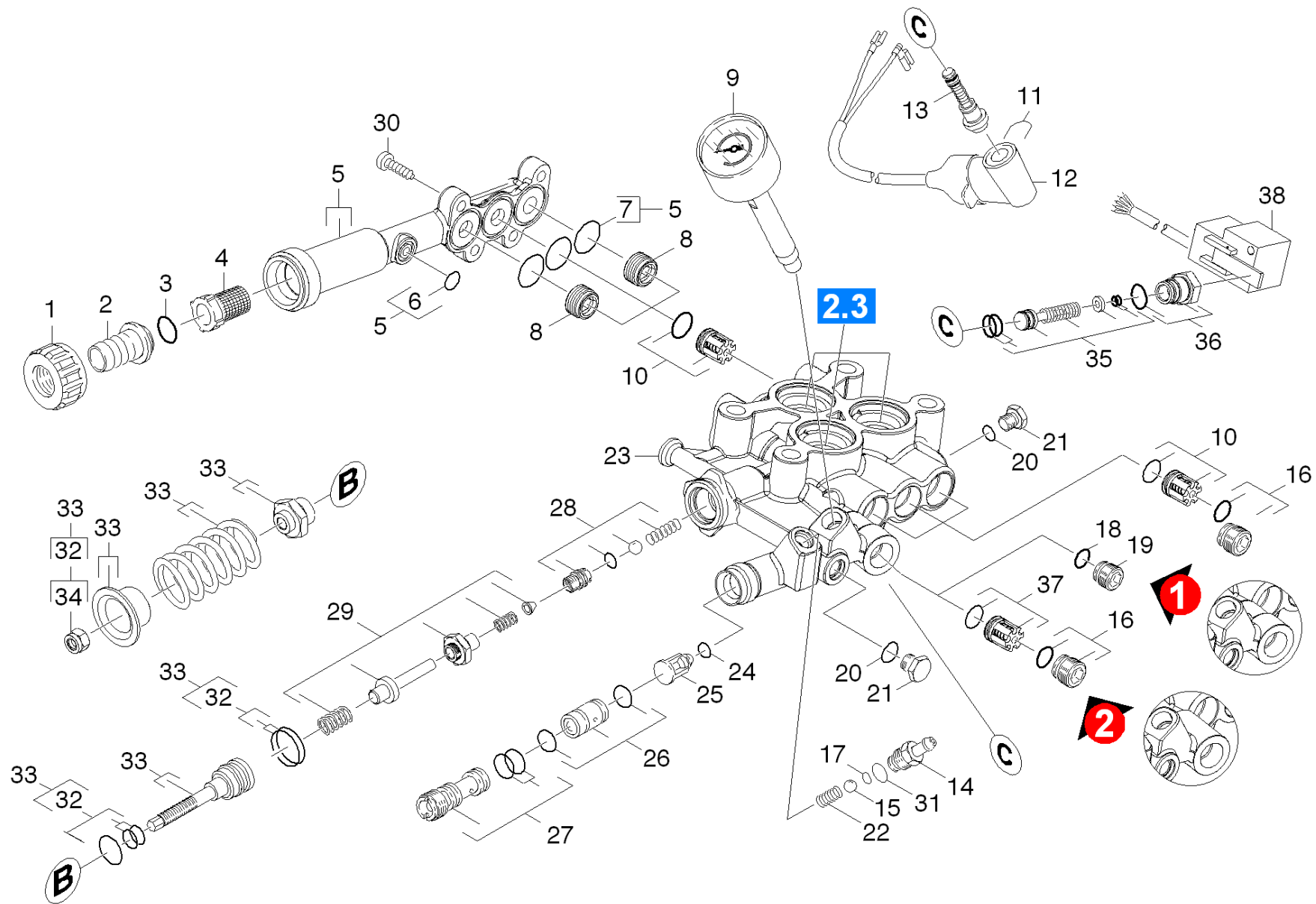


21 Cylinder head

Overview technical documents/Professional/High pressure cleaner cold water/Electric motor/HD 6/16 - 4 MX *EU (1.524-101.0)/Spare parts list HD 6/16/20 Pump set/21 Cylinder head



21 Cylinder head

Overview technical documents/Professional/High pressure cleaner cold water/Electric motor/HD 6/16 - 4 MX *EU (1.524-101.0)/Spare parts list HD 6/16/20 Pump set/21 Cylinder head

Rez.daļas/nodil.pakļ.daļas	Poz.	Materiāla Nr.	Nosaukums	Daudzums	Pārdoš. vienība	no sēr. Nr.	līdz sēr. Nr.	Daž. informācija
X-X	1	5.310-076.0	Uzgrieznis	1.000	ST	0000000000	0000000000	
X-X	2	5.443-291.0	Caurules nipelis	1.000	ST	0000000000	0000000000	
X-X	3	6.362-161.0	Gredzenblīve 19,3 X 2,4	1.000	ST	0000000000	0000000000	
X-X	4	6.414-141.0	Sieta filtrs	1.000	ST	0000000000	0000000000	
X-X	5	4.064-005.0	Suction cover complete	1.000	ST	0000000000	0000000000	
X	6	6.362-388.0	Gredzenblīve 8,0x1,5 -EPDM 70	1.000	ST	0000000000	0000000000	
X-X	7	6.363-536.0	Gredzenblīve 21x1,5	3.000	ST	0000000000	0000000000	
X-X	8	5.583-177.0	Vārsta skrūve M20x1	2.000	ST	0000000000	0000000000	
X-X	9	4.423-024.0	Pressure gauge from 4.422-011.0	1.000	ST	0000000000	0000000000	
X-X	10	2.884-512.0	Valve (3 Stueck)	2.000	ST	0000000000	0000000000	
X-X	11	5.034-494.0	Retaining bracket	1.000	ST	0000000000	0000000000	
	12	4.744-221.0	Switch complete only for replacement	1.000	ST	0000000000	0000000000	
Pozīcijas teksts: /1.524-110.0								
X-X	12	4.744-168.0	Switch complete	1.000	ST			
Pozīcijas teksts: 1.524-100.0 / -105.0 / -107.0 / -112.0/-113.0								
X-X	12	4.744-201.0	Switch complete	1.000	ST	0000000000	0000000000	
Pozīcijas teksts: /1.524-106.0								
X-X	13	2.883-988.0	SPARE PARTS SET	1.000	ST	0000000000	0000000000	
X-X	14	5.443-624.0	Nipelis	1.000	ST	0000000000	0000000000	
	15	7.401-908.0	Sfēra 7 G300 -1.4301 DIN 5401	1.000	ST	0000000000	0000000000	
X-X	16	4.483-001.0	Valve screw	4.000	ST	0000000000	0000000000	
X-X	17	6.362-175.0	Gredzenblīve 5,28x 1,78	1.000	ST	0000000000	0000000000	
X-X	18	6.362-528.0	Gredzenblīve 9,5 X 2,0	1.000	ST	0000000000	0000000000	VERSION 1
Pozīcijas teksts: 1.524-103.0 /-104.0								
	19	5.411-168.0	Valve screw M16x1	1.000	ST	0000000000	0000000000	VERSION 1

21 Cylinder head

Overview technical documents/Professional/High pressure cleaner cold water/Electric motor/HD 6/16 - 4 MX *EU (1.524-101.0)/Spare parts list HD 6/16/20 Pump set/21 Cylinder head

Rez.daļas/nodil.pakļ.daļas	Poz.	Materiāla Nr.	Nosaukums	Daudzums	Pārdoš. vienība	no sēr. Nr.	līdz sēr. Nr.	Daž. informācija
	20	6.362-690.0	Gredzenblīve 7x2 - NBR 70	1.000	ST	0000000000	0000000000	
X-X	21	5.411-070.0	Vītņtapa	1.000	ST	0000000000	0000000000	
	22	5.332-258.0	Spirālveida atspere	1.000	ST	0000000000	0000000000	
	23	4.550-813.0	Spare part set cylinder head	1.000	ST	0000000000	0000000000	
Pozīcijas teksts: /1.524-105.0								
X-X	23	4.550-700.0	Cylinder head	1.000	ST	0000000000	0000000000	
Pozīcijas teksts: 1.524-100.0 / -103.0 / -104.0 / -107.0 /-112.0 /-113.0								
X	23	4.550-804.0	Cylinder head	1.000	ST	0000000000	0000000000	
Pozīcijas teksts: /1.524-106.0/-110.0								
X-X	24	6.363-613.0	Gredzenblīve 4 x 2 -NBR90	1.000	ST	0000000000	0000000000	VERSION 1
X-X	25	5.584-091.0	Pretvārsta ass	1.000	ST	0000000000	0000000000	VERSION 1
X-X	26	2.884-852.0	Spare part set nozzle insert	1.000	ST	0000000000	0000000000	
Pozīcijas teksts: 1.524-100.0 / -103.0 / -104.0 / -106.0 /-107.0 / -110.0 /-112.0 /-113.0								
X-X	26	2.884-853.0	Spare part set nozzle insert	1.000	ST	0000000000	0000000000	
Pozīcijas teksts: 1.524-105.0								
X-X	27	4.769-052.0	Nozzle insert complete	1.000	ST	0000000000	0000000000	
X-X	28	4.481-237.0	Valve seat complete only for replacement	1.000	ST	0000000000	0000000000	
X-X	29	2.884-856.0	Spare part set excess-current	1.000	ST	0000000000	0000000000	
X-X	30	7.306-023.0	cylinder head screw	4.000	ST	0000000000	0000000000	
	31	6.362-690.0	Gredzenblīve 7x2 - NBR 70	1.000	ST	0000000000	0000000000	
X-X	32	2.884-551.0	Spare part set	1.000	ST	0000000000	0000000000	
X-X	33	4.591-054.0	Set excess-current	1.000	ST	0000000000	0000000000	
Pozīcijas teksts: 1.524-100.0 / -103.0 / -106.0 / -107.0 /-110.0 /-112.0 /-113.0								
	33	4.591-058.0	Set excess-current	1.000	ST	0000000000	0000000000	
Pozīcijas teksts: 1.524-104.0 / -105.0								

21 Cylinder head

Overview technical documents/Professional/High pressure cleaner cold water/Electric motor/HD 6/16 - 4 MX *EU (1.524-101.0)/Spare parts list HD 6/16/20 Pump set/21 Cylinder head

Rez.daļas/nodil.pakļ.dajas	Poz.	Materiāla Nr.	Nosaukums	Daudzums	Pārdoš. vienība	no sēr. Nr..	līdz sēr. Nr.	Daž. informācija
X-X	34	7.311-510.0	Hexagon nut M 8-8-A2E ISO 7040	1.000	ST	0000000000	0000000000	
X-X	35	2.884-869.0	Spare part set	1.000	ST			
X-X	36	4.411-011.0	Spare part set	1.000	ST			
X-X	37	4.580-594.0	Valve complete	1.000	ST			
X-X	38	6.635-493.0	Divfāzu slēdzis	1.000	ST			
Pozīcijas teksts: 1.524-103.0 /-104.0								
X-X	100	2.884-882.0	Spare parts set pump high-pressure 6/16	1.000	ST	0000000000	0000000000	
Pozīcijas teksts: 1.524-100.0 / -106.0 / -107.0 / -110.0-112.0 /-113.0								
X-X	100	2.884-883.0	Spare parts set pump high-pressure 7/18	1.000	ST	0000000000	0000000000	
Pozīcijas teksts: /1.524-105.0								