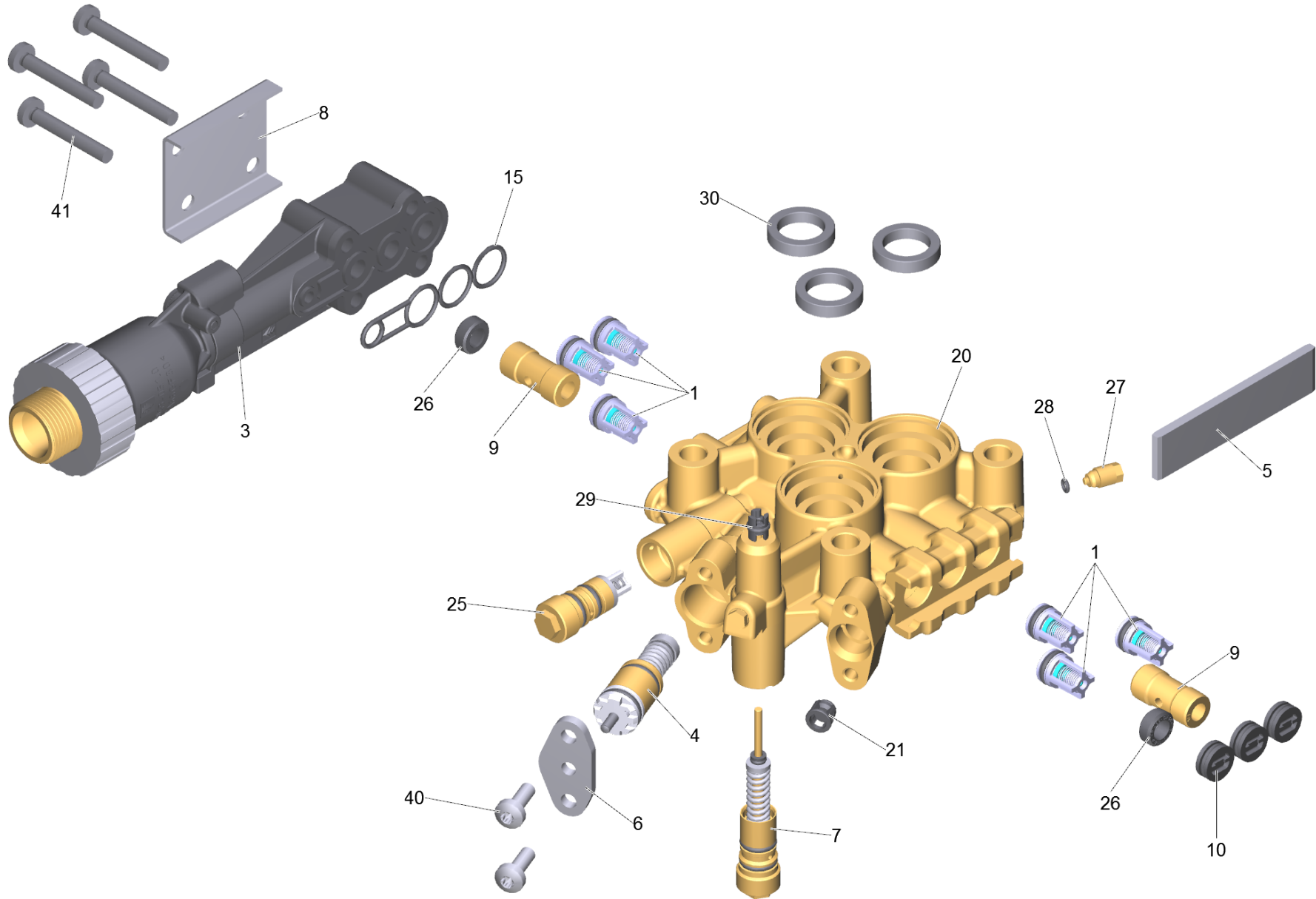


4 Cylinder head complete HD-M TK48 D18

Professional \ High pressure cleaner cold water \ Electric motor \ HD 6/16-4 MX Plus *EU \ Unit HD 6/16-4MX Plus *EU \ Pump set HD 6/16-4 M *EU (D145) \ Cylinder head complete HD-M TK48 D18



4 Cylinder head complete HD-M TK48 D18

Professional \ High pressure cleaner cold water \ Electric motor \ HD 6/16-4 MX Plus *EU \ Unit HD 6/16-4MX Plus *EU \ Pump set HD 6/16-4 M *EU (D145) \ Cylinder head complete HD-M TK48 D18

KÄRCHER

POS	Article no.	Description	Quantity	Unit
7	4.580-104.3	Control piston complete D14	1.000	ST
6	5.093-067.0	Cover plate	1.000	ST
20	5.550-034.3	Cylinder head for replacement HD-M TK48	1.000	ST
10	4.132-007.0	Drain plug only for replacement	3.000	ST
4	4.580-792.3	Excess-current complete for replacement	1.000	ST
30	6.365-526.0	Grooved ring 18x26x5.4	3.000	ST
28	6.362-984.0	O-Ring d. 3 x 1,5 NBR 80	2.000	ST
5	5.003-062.0	Plate	1.000	ST
8	5.005-314.0	Plate suction cover	1.000	ST
27	5.443-024.3	Plug for replacement	2.000	ST
15	5.365-284.0	Profile gasket	1.000	ST
40	7.306-090.0	Screw M6x16 -8.8-R3R (In6Rd)	2.000	ST
41	7.306-129.0	Screw M6x40 -8.8-R3R (In6Rd)	4.000	ST
29	5.363-245.3	Seal control piston for replacement	1.000	ST
9	5.110-079.0	Spacer brass D14,5 x 30	2.000	ST
26	5.110-050.0	Spacer D14,5 x 6	2.000	ST
25	4.580-076.3	Start-up Valve complete for replacement	1.000	ST
1	2.884-916.0	Valve (3 Stück)	2.000	ST
21	4.584-022.0	Valve pin complete	1.000	ST
3		Water intake complete	1.000	ST