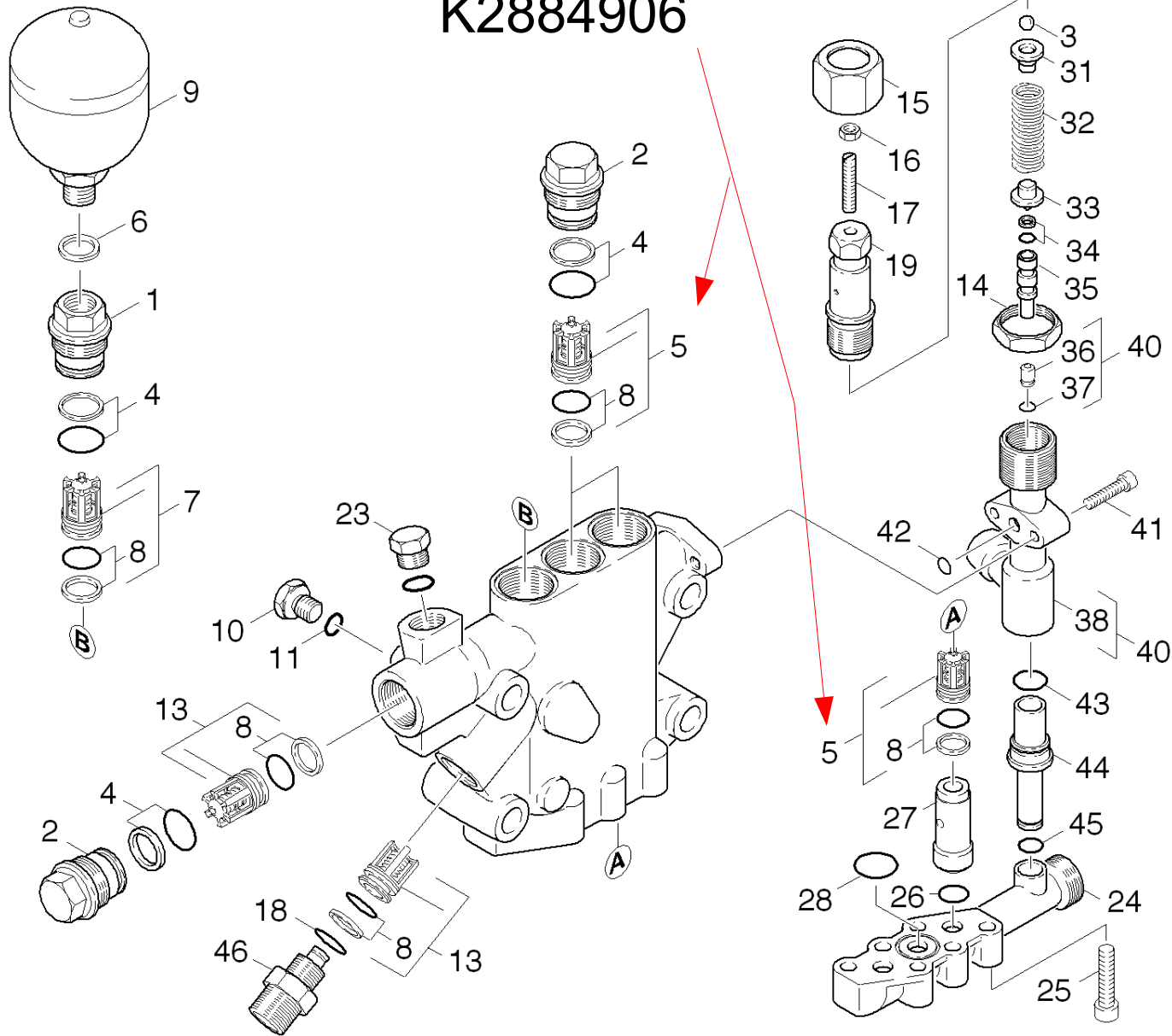


# 181 Cylinder head (0.171-388.0)

Overview technical documents/Professional/Systems engineering/Wash units passenger vehicle/CHH 8000 \*EU (1.104-182.0)/-Spare parts list CHH 8000 \*EU/180 Chemistry pump/181 Cylinder head (0.171-388.0)

## K2884906



## 181 Cylinder head (0.171-388.0)

Overview technical documents/Professional/Systems engineering/Wash units passenger vehicle/CHH 8000

\*EU (1.104-182.0)/-Spare parts list CHH 8000 \*EU/180 Chemistry pump/181 Cylinder head (0.171-388.0)

| ET/VT (spare/wear parts) | Pos | Material #  | Name                                    | Qty.  | Unit | from ser.nr. | up to ser.nr. | Footnote text                          |
|--------------------------|-----|-------------|---|-------|------|--------------|---------------|--|
|                          | 1   | 5.583-149.0 | Valve screw                             | 1.000 | ST   |              |               |  |
|                          | 2   | 5.583-125.0 | Valve screw                             | 3.000 | ST   |              |               | 00000000000000000000                   |
|                          | 3   | 7.401-918.0 | Sphere 6 G300 -1.4301 DIN 5401          | 1.000 | ST   |              |               | 00000000000000000000                   |
| X-X                      | 4   | 6.362-500.0 | O-Ring seal complete /1ST.-R.           | 4.000 | ST   |              |               | 00000000000000000000                   |
| X-X                      | 5   | 2.884-906.0 | Válvula triple (3 stueck)               | 2.000 | ST   |              |               | 00000000000000000000 SET WITH 3 PIECES |
| X-X                      | 6   | 7.362-005.0 | Joint ring A14x18 -Cu DIN 7603          | 1.000 | ST   |              |               |  |
| X-X                      | 7   | 4.580-237.0 | Valve complete                          | 1.000 | ST   |              |               | 00000000000000000000                   |
| X-X                      | 8   | 6.362-466.0 | O-Ring seal complete 1ST.-R.            | 8.000 | ST   |              |               | 00000000000000000000                   |
| X                        | 9   | 6.505-025.0 | Pressure accumulator                    | 1.000 | ST   |              |               | 00000000000000000000                   |
| X                        | 10  | 7.382-254.0 | Screw plug M16x1,5-A-CuZn DIN 7604      | 1.000 | ST   |              |               | 00000000000000000000                   |
| X-X                      | 11  | 7.362-003.0 | Joint ring A10x13,5 -Cu DIN 7603        | 1.000 | ST   |              |               | 00000000000000000000                   |
| X-X                      | 13  | 2.884-903.0 | Valve ( 2 Stück)                        | 1.000 | ST   |              |               | 00000000000000000000 SET OF 2 PIECES   |
|                          | 14  | 5.311-165.0 | Hexagon nut M30x1,5                     | 1.000 | ST   |              |               | 00000000000000000000                   |
|                          | 15  | 5.311-164.0 | Hexagon nut                             | 1.000 | ST   |              |               | 00000000000000000000                   |
|                          | 16  | 7.311-003.0 | Hexagon nut M6 -8-A2E ISO 4032          | 1.000 | ST   |              |               | 00000000000000000000                   |
| X-X                      | 17  | 7.307-418.0 | Threaded pin M6x35 -St-45H-A2E ISO 4026 | 1.000 | ST   |              |               | 00000000000000000000                   |
| X-X                      | 18  | 6.362-481.0 | O-Ring seal 14,0x2,0-NBR 80             | 1.000 | ST   |              |               | 00000000000000000000                   |
|                          | 19  | 5.304-061.0 | Hexagonal head screw                    | 1.000 | ST   |              |               | 00000000000000000000                   |
|                          | 24  | 5.587-141.0 | Valve housing                           | 1.000 | ST   |              |               | 00000000000000000000                   |
|                          | 25  | 7.306-044.0 | Cylinder head screw M8x35 -8.8-A2E ISO4 | 6.000 | ST   |              |               | 00000000000000000000                   |
| X-X                      | 26  | 6.362-153.0 | O-Ring seal 15,3 X 2,4-NBR 70           | 2.000 | ST   |              |               | 00000000000000000000                   |
| X-X                      | 27  | 5.110-518.0 | Sleeve                                  | 2.000 | ST   |              |               | 00000000000000000000                   |
| X-X                      | 28  | 6.362-547.0 | O-Ring seal 20,0x1,5-NBR 70             | 1.000 | ST   |              |               | 00000000000000000000                   |
| X                        | 31  | 5.582-103.0 | Valve disc                              | 1.000 | ST   |              |               | 00000000000000000000                   |
|                          | 32  | 5.332-296.0 | Helical spring                          | 1.000 | ST   |              |               | 00000000000000000000                   |

**181 Cylinder head (0.171-388.0)**

Overview technical documents/Professional/Systems engineering/Wash units passenger vehicle/CHH 8000

\*EU (1.104-182.0)/-Spare parts list CHH 8000 \*EU/180 Chemistry pump/181 Cylinder head (0.171-388.0)

| ET/VT (spare/wear parts) | Pos | Material #  | Name                          | Qty.  | Unit | from ser.nr.         | up to ser.nr. | Footnote text |
|--------------------------|-----|-------------|-------------------------------|-------|------|----------------------|---------------|---------------|
|                          | 33  | 5.584-077.0 | Valve pin                     | 1.000 | ST   | 00000000000000000000 |               |               |
| X-X                      | 34  | 6.363-115.0 | O-Ring seal complete 1ST.-R.  | 1.000 | ST   | 00000000000000000000 |               |               |
| X-X                      | 35  | 5.553-249.0 | Piston                        | 1.000 | ST   | 00000000000000000000 |               |               |
| X-X                      | 36  | 5.581-143.0 | Valve seat                    | 1.000 | ST   | 00000000000000000000 |               |               |
| X-X                      | 37  | 6.362-703.0 | O-Ring seal 6,0x1,5-NBR 70    | 1.000 | ST   | 00000000000000000000 |               |               |
|                          | 38  | 5.060-424.0 | Housing                       | 1.000 | ST   | 00000000000000000000 |               |               |
| X                        | 40  | 4.060-224.0 | Housing complete              | 1.000 | ST   | 00000000000000000000 |               |               |
|                          | 41  | 7.306-105.0 | Screw M6x30 -8.8-R3R (In6Rd)  | 2.000 | ST   | 00000000000000000000 |               |               |
|                          | 42  | 6.362-482.0 | O-Ring seal 10 x 1,5-NBR 70   | 1.000 | ST   | 00000000000000000000 |               |               |
|                          | 43  | 6.362-534.0 | O-Ring seal 18,0 X 2,0-NBR 70 | 1.000 | ST   | 00000000000000000000 |               |               |
|                          | 44  | 5.402-475.0 | Connection piece              | 1.000 | ST   | 00000000000000000000 |               |               |
|                          | 45  | 6.362-797.0 | O-Ring seal 9,0 X 2,0         | 1.000 | ST   | 00000000000000000000 |               |               |
|                          | 46  | 5.402-601.0 | Screw union                   | 1.000 | ST   | 00000000000000000000 |               |               |
| X-X                      | 100 | 2.883-852.0 | Pump set                      | 1.000 | ST   | 00000000000000000000 |               |               |