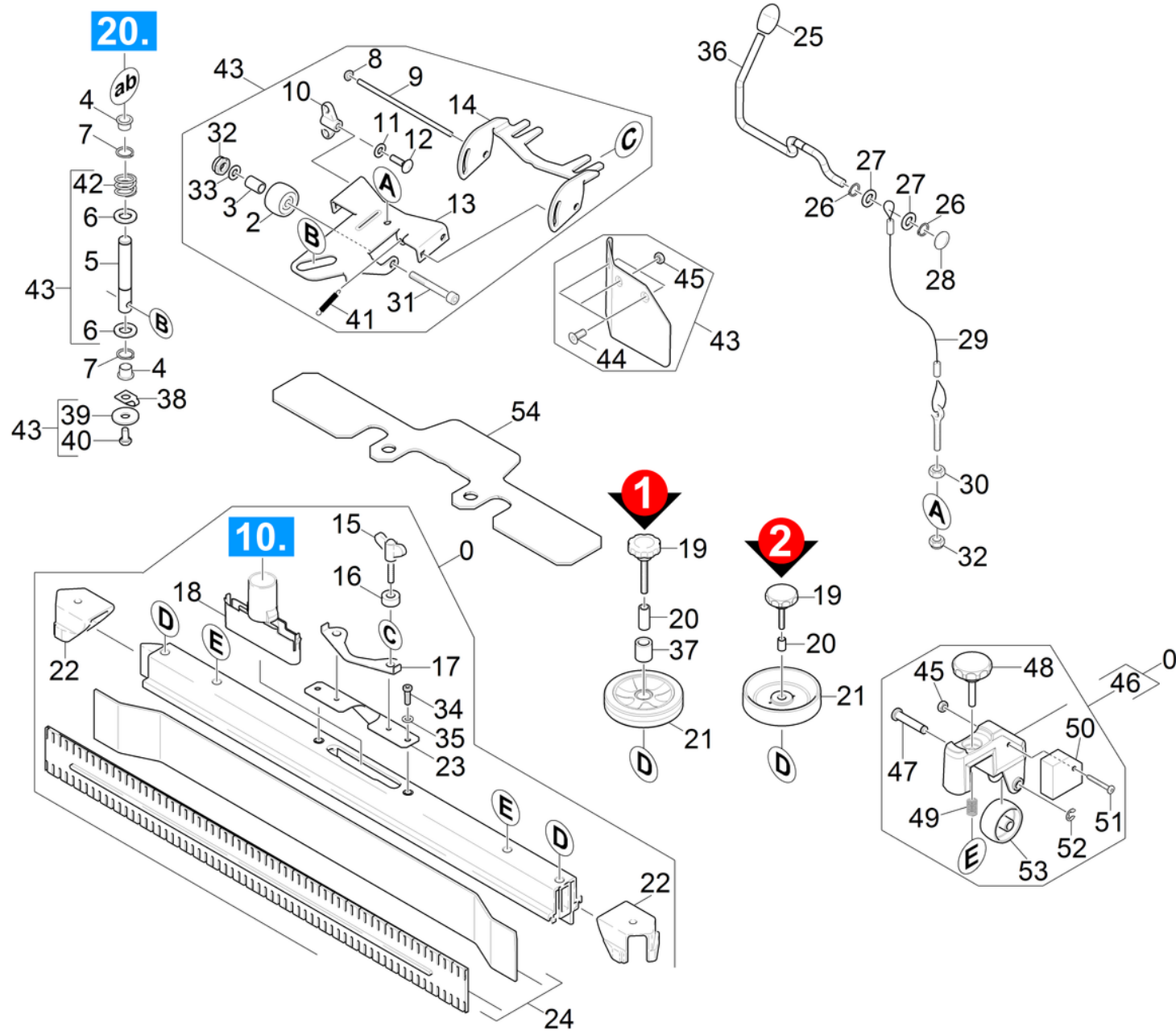


63 Suction bar

Professional \ Floor cleaner \ Walk behind \ BD 40/25 C ECO Bp \ Spare parts list BR/BD 40/25 C \ Suction mechanism \ Suction bar



63 Suction bar

Professional \ Floor cleaner \ Walk behind \ BD 40/25 C ECO Bp \ Spare parts list BR/BD 40/25 C \ Suction mechanism \ Suction bar



POS	Article no.	Description	Quantity	Unit	Foot note text
54	5.128-339.0	Additional weight suction bar	1.000	ST	
9	5.107-202.0	Bar	1.000	ST	
4	6.437-484.0	Bearing bush	2.000	ST	
47	5.317-781.0	Bolt roller	2.000	ST	
5	5.317-357.0	Bolt suction bar BR/BD 40/25	1.000	ST	
43	2.882-673.0	Conversion kit suction beam retraction s	1.000	ST	
44	7.305-050.0	Countersunk screw M5x20 -A2-70-s (In6Rd	3.000	ST	
34	7.306-142.0	Cylinder head screw M 8x25-A4-70 ISO 47	2.000	ST	
31	7.306-012.0	Cylinder head screw M10x90-A4-70 DIN 91	2.000	ST	
21	5.515-346.0	Deflector roll suction bar D120	2.000	ST	VERSION 2
22	2.885-294.0	End piece left / right spare parts set	1.000	ST	
41	6.330-448.0	Extension spring	1.000	ST	
40	7.304-546.0	Hexagonal head screw M 8x12-A2-70 ISO 4	1.000	ST	
45	7.311-431.0	Hexagon nut M 5-1.4305 DIN 985	3.000	ST	
30	7.311-224.0	Hexagon nut M 8-04-A2E ISO 4035	1.000	ST	
32	7.311-441.0	Hexagon nut M10-1.4305 DIN 985	3.000	ST	
13	5.044-904.0	Holder suction bar long hole	1.000	ST	
52	7.343-303.0	Locking ring 8-A2 DIN 6799	2.000	ST	
8	6.343-132.0	Lock washer 8	2.000	ST	
26	7.343-205.0	Lock washer 9-St-A2E DIN 6799	2.000	ST	
7	7.343-306.0	Lock washer 12-St-A2E DIN 6799	1.000	ST	
17	5.007-217.0	Plate	1.000	ST	
38	5.001-987.0	Plate bracket fuer Kette	1.000	ST	
49	5.332-504.0	Pressure spring	2.000	ST	
42	5.332-349.0	Pressure spring	1.000	ST	
25	6.321-185.0	Push button	1.000	ST	
28	6.343-191.0	Quick-fastener	1.000	ST	
36	5.034-735.0	Retaining bracket suction bar	1.000	ST	
14	5.058-987.0	Rocker suction bar	1.000	ST	
2	5.435-004.0	Roller D40	1.000	ST	
46	4.035-339.0	Roller suction bar	2.000	ST	
29	4.172-024.0	Rope complete	1.000	ST	
24	6.273-262.0	Rubber lip set anti stripe oil resistant	1.000	ZSA	

63 Suction bar

Professional \ Floor cleaner \ Walk behind \ BD 40/25 C ECO Bp \ Spare parts list BR/BD 40/25 C \ Suction mechanism \ Suction bar



POS	Article no.	Description	Quantity	Unit	Foot note text
24	6.273-354.0	Rubber lip set oil resistant	1.000	SET	
24	6.273-353.0	Rubber lip set standard	1.000	SET	
12	7.303-139.0	Saucer-head screw M6x20 -A2 DIN 603	1.000	ST	
51	7.306-185.0	Screw M5x 35-A2-70 (IN6RD)	2.000	ST	
20	5.094-231.0	Sleeve suction bar in VA	2.000	ST	
16	5.112-810.0	Sleeve VA	2.000	ST	
37	5.094-405.0	Spacer sleeve external	2.000	ST	
20	5.094-404.0	Spacer sleeve inside	2.000	ST	
3	5.112-865.0	Spacer sleeve suction bar right	1.000	ST	
19	6.321-243.0	Star grip stainless steel D50x48	2.000	ST	
19	6.321-239.0	Star grip VA Ø50x43	2.000	ST	
48	6.321-240.0	Star grip with inscription VA Ø50x43	2.000	ST	
50	7.777-999.0	Stockpiling discontinued	2.000	ST	
0	4.777-300.0	Suction bar 770AB oLR	1.000	ST	
0	4.777-407.0	Suction bar straight 770mm	1.000	ST	
23	5.100-559.0	Suction bar support plate	1.000	ST	
18	5.033-601.0	Suction nipple	1.000	ST	
11	7.312-292.0	Washer 6 -A2 ISO 7093-1	1.000	ST	
35	7.312-017.0	Washer 8-A2 ISO 7089	2.000	ST	
33	7.312-066.0	Washer 10 -A2 ISO 7089	2.000	ST	
27	7.312-005.0	Washer 10-200HV-A3E ISO 7089	2.000	ST	
39	7.312-269.0	Washer 10-A2 ISO 7094	1.000	ST	
6	7.312-057.0	Washer 16 -A2 ISO 7089	4.000	ST	
53	6.435-401.0	Wheel D54	2.000	ST	
21	5.515-366.0	Wheel D121	2.000	ST	VERSION 1
10	6.310-180.0	Wing nut M6	1.000	ST	
15	5.305-296.0	Wing screw M8x40 VA	2.000	ST	