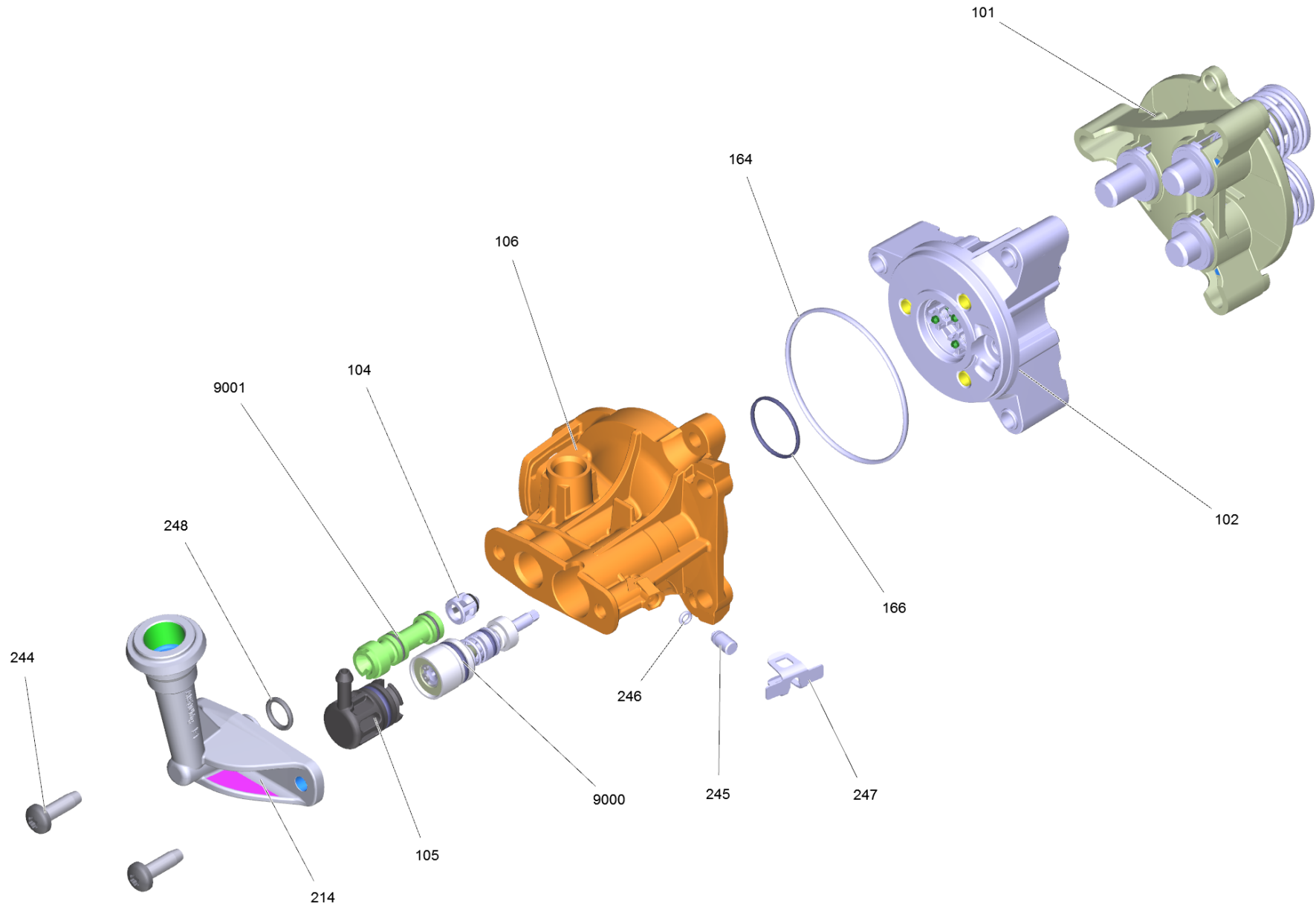


51 Pump head complete K7 *EU

Home and Garden \ High pressure cleaner cold water \ Electric motor \ K 7 \ K 7 Full Control Home *EU \ Spare parts list K7 Full Contoll Home *E \ Pump set complete K7 2016 \ Pump head complete K7 *EU



51 Pump head complete K7 *EU

Home and Garden \ High pressure cleaner cold water \ Electric motor \ K 7 \ K 7 Full Control Home *EU \ Spare parts list K7 Full Contoll Home *E \ Pump set complete K7 2016 \ Pump head complete K7 *EU

KÄRCHER

| POS | Preces Nr. | Apraksts | Quantity | Unit |
|------|-------------|------------------------------------|----------|------|
| 247 | 5.048-047.0 | Clamp pressure sensor | 1.000 | ST |
| 102 | 4.550-017.0 | Cylinder head aluminium complete | 1.000 | ST |
| 248 | 6.362-151.0 | Gredzenblīve 10 x 2 NBR 70 | 1.000 | ST |
| 166 | 6.362-562.0 | Gredzenblīve 21,95X 1,78-NBR 90 | 1.000 | ST |
| 214 | 5.789-070.0 | High-pressure outlet | 1.000 | ST |
| 106 | 5.062-715.3 | Housing waterproof | 1.000 | ST |
| 9001 | 4.769-034.0 | Nozzle insert only for replacement | 1.000 | ST |
| 246 | 6.363-625.0 | O-Ring seal 2,7x1,5 NBR90 | 1.000 | ST |
| 164 | 6.363-616.0 | O-Ring seal 60,0x2,0 -NBR70 | 1.000 | ST |
| 101 | | Piston guidance complete | 1.000 | ST |
| 245 | 5.443-019.0 | Plug | 1.000 | ST |
| 105 | 4.580-025.0 | Plug complete | 1.000 | ST |
| 244 | 7.303-048.0 | Screw M6x20 -St-R3R (In6Rd) | 2.000 | ST |
| 9000 | 2.885-186.0 | spare part | 1.000 | ST |
| 104 | 4.584-022.0 | Valve pin complete | 1.000 | ST |