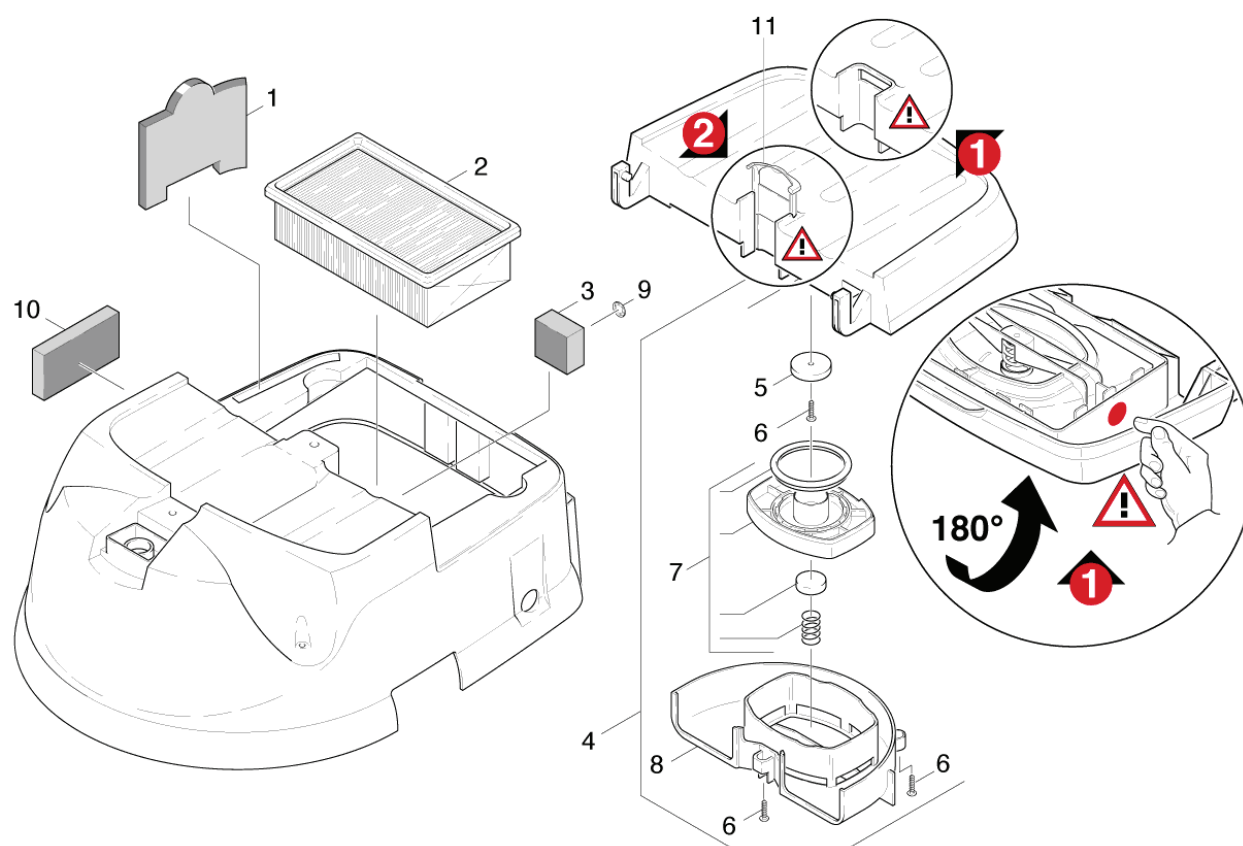


30 Filter

Professional \ Vacuum cleaner \ Wet-/dry vacuum cleaner \ NT 361 ECO \ Spare parts list NT 361 ECO \ Filter

KÄRCHER



30 Filter

Professional \ Vacuum cleaner \ Wet-/dry vacuum cleaner \ NT 361 ECO \ Spare parts list NT 361 ECO \ Filter

KÄRCHER

| POS | Article no. | Description | Quantity | Unit | Remark | Foot note text |
|-----|--|--|----------|------|-----------|--------------------------------|
| 4 | 4.063-660.0 | Cover filter complete 1100W | 1.000 | ST | 1100W | VERSION 1 |
| | Item text1: / 6.490-106.0 / -107.0 / -118.0 | | | | | |
| 4 | 4.063-677.0 | Cover filter turbine 1100W | 1.000 | ST | 1100W | VERSION 2 |
| | Item text1: / 6.490-106.0 / -107.0/-166.0 | | | | | |
| 4 | 4.063-679.0 | Cover filter turbine 1200W | 1.000 | ST | 1200W | |
| | Item text1: / 6.490-139.0 | | | | | |
| 10 | 6.904-204.0 | Filter cooling air input | 1.000 | ST | | |
| 3 | 6.904-191.0 | Filter cooling air outlet | 1.000 | ST | | |
| 1 | 6.904-215.0 | Filter working air 3St. Kae | 1.000 | ZSA | | |
| 2 | 6.904-080.0 | Flat-pleated filter packaged neutrally m | 1.000 | ST | | |
| | Item text1: //1.184-107.0 | | | | | |
| 2 | 6.904-367.0 | Flat filter only for replacement Kaerche | 1.000 | ST | | |
| | Item text1: //1.184-101.0/-102.0/-103.0/-104.0 | | | | | |
| | Item text2: /-106.0/-108.0/-115.0/-198.0 | | | | | |
| 9 | 6.343-139.0 | Lock washer | 1.000 | ST | | ORDER ACCORDING TO CONSUMPTION |
| 8 | 5.006-043.0 | Plate | 1.000 | ST | | |
| 6 | 7.303-129.0 | Screw 4x16 -10.9-R2R (K-In6Rd) | 4.000 | ST | | |
| 11 | 5.031-899.0 | Slider PFC | 1.000 | ST | VERSION 2 | |
| 7 | 2.883-920.0 | Spare part set turbine 2-level 1100W | 1.000 | ST | 1100W | VERSION 2 |
| 7 | 2.883-889.0 | SPARE PARTS SET 1100W | 1.000 | ST | 1100W | VERSION 1 |
| 7 | 2.889-067.0 | SPARE PARTS SET 1200W | 1.000 | ST | 1200W | |
| | Item text1: / 6.490-139.0 | | | | | |
| 5 | 5.115-840.0 | Washer Gegenmagnet | 1.000 | ST | | |