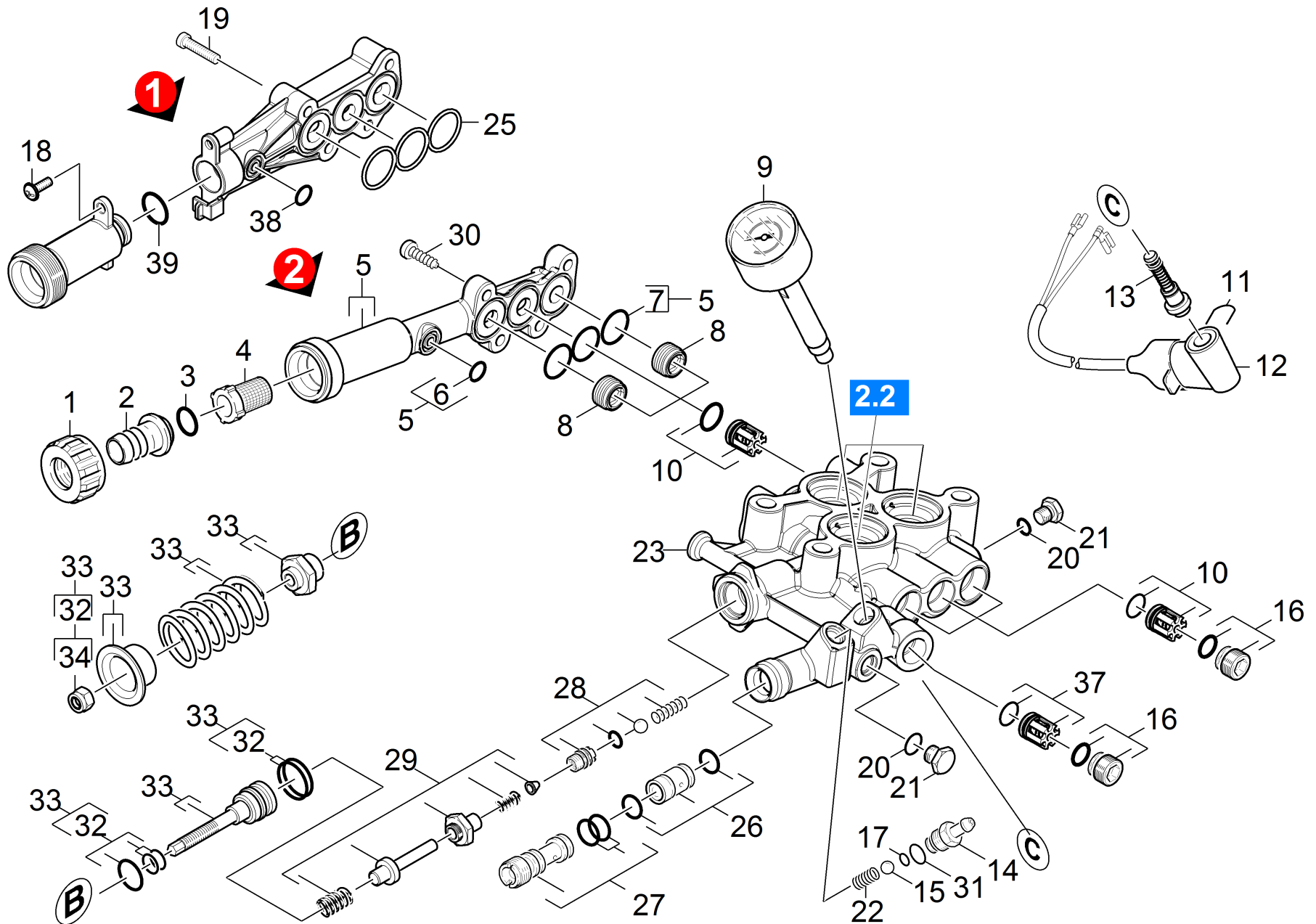


21 Cylinder head

Professional \ High pressure cleaner cold water \ Electric motor \ HD 6/16-4 M Plus *EU \ Spare parts list high-pressure 6/16 4M P \ Pump set \ Cylinder head



21 Cylinder head

Professional \ High pressure cleaner cold water \ Electric motor \ HD 6/16-4 M Plus *EU \ Spare parts list high-pressure 6/16 4M P \ Pump set \ Cylinder head



POS	Article no.	Description	Quantity	Unit	Remark
1	5.310-076.0	Nut	1.000	ST	
2	5.443-291.0	Hose stem	1.000	ST	
3	6.362-161.0	O-Ring seal 19,3 X 2,4	1.000	ST	
4	6.414-141.0	Strainer	1.000	ST	
5	4.064-005.0	Suction cover complete	1.000	ST	
6	6.362-388.0	O-Ring seal 8,0x1,5 -EPDM 70	1.000	ST	
7	6.363-536.0	O-Ring seal 21x1,5	3.000	ST	
8	5.583-177.0	Valve screw M20x1	2.000	ST	
9	4.423-024.0	Pressure gauge complete	1.000	ST	
10	2.884-512.0	Valve (3 Stueck)	2.000	ST	
11	5.034-494.0	Retaining bracket	1.000	ST	
12	4.744-168.0	Switch complete	1.000	ST	
13	2.883-988.0	SPARE PARTS SET	1.000	ST	
14	5.443-624.0	Nipple	1.000	ST	
15	7.401-908.0	Sphere 7 G300 -1.4301 DIN 5401	1.000	ST	
16	4.483-001.0	Valve screw	4.000	ST	
17	6.363-597.0	O-Ring seal 5,28 x 1,78	1.000	ST	
18	7.303-108.0	Screw 5x20 -10.9-R2R (In6Rd)	1.000	ST	
19	7.306-118.0	Screw M 6x35 -8.8-R3R (In6Rd)	4.000	ST	
20	6.362-690.0	O-Ring seal 7x2 - NBR 70	1.000	ST	
21	5.411-070.0	Screw plug	1.000	ST	
22	5.332-258.0	Helical spring	1.000	ST	
23	4.550-700.0	Cylinder head	1.000	ST	TR-Thread > for M22 1,5 use adapter 4.111-034.0
25	5.365-371.0	Profile gasket	1.000	ST	
26	2.884-852.0	Spare part set nozzle insert	1.000	ST	
27	4.769-052.0	Nozzle insert complete	1.000	ST	
28	4.481-237.0	Valve seat complete only for replacement	1.000	ST	
29	2.884-856.0	Spare part set excess-current	1.000	ST	
30	7.306-023.0	Cylinder head screw M6x25 -8.8-A2E ISO4	4.000	ST	
31	6.362-690.0	O-Ring seal 7x2 - NBR 70	1.000	ST	
32	2.884-551.0	Spare part set	1.000	ST	
33	4.591-054.0	Set excess-current	1.000	ST	
34	7.311-510.0	Hexagon nut M 8-8-A2E ISO 7040	1.000	ST	

21 Cylinder head

Professional \ High pressure cleaner cold water \ Electric motor \ HD 6/16-4 M Plus *EU \ Spare parts list high-pressure 6/16 4M P \ Pump set \ Cylinder head



POS	Article no.	Description	Quantity	Unit	Remark
35	2.884-869.0	Spare part set control piston	1.000	ST	
36	4.411-011.0	Spare part set HD 7/18 M	1.000	ST	
37	4.580-594.0	Valve complete	1.000	ST	
38	6.363-516.0	O-Ring seal 8,5x2	1.000	ST	
39	6.362-481.0	O-Ring seal 14,0 x 2,0 NBR 80	1.000	ST	
100	2.884-347.0	Pump set HD 6/16 M	1.000	ST	