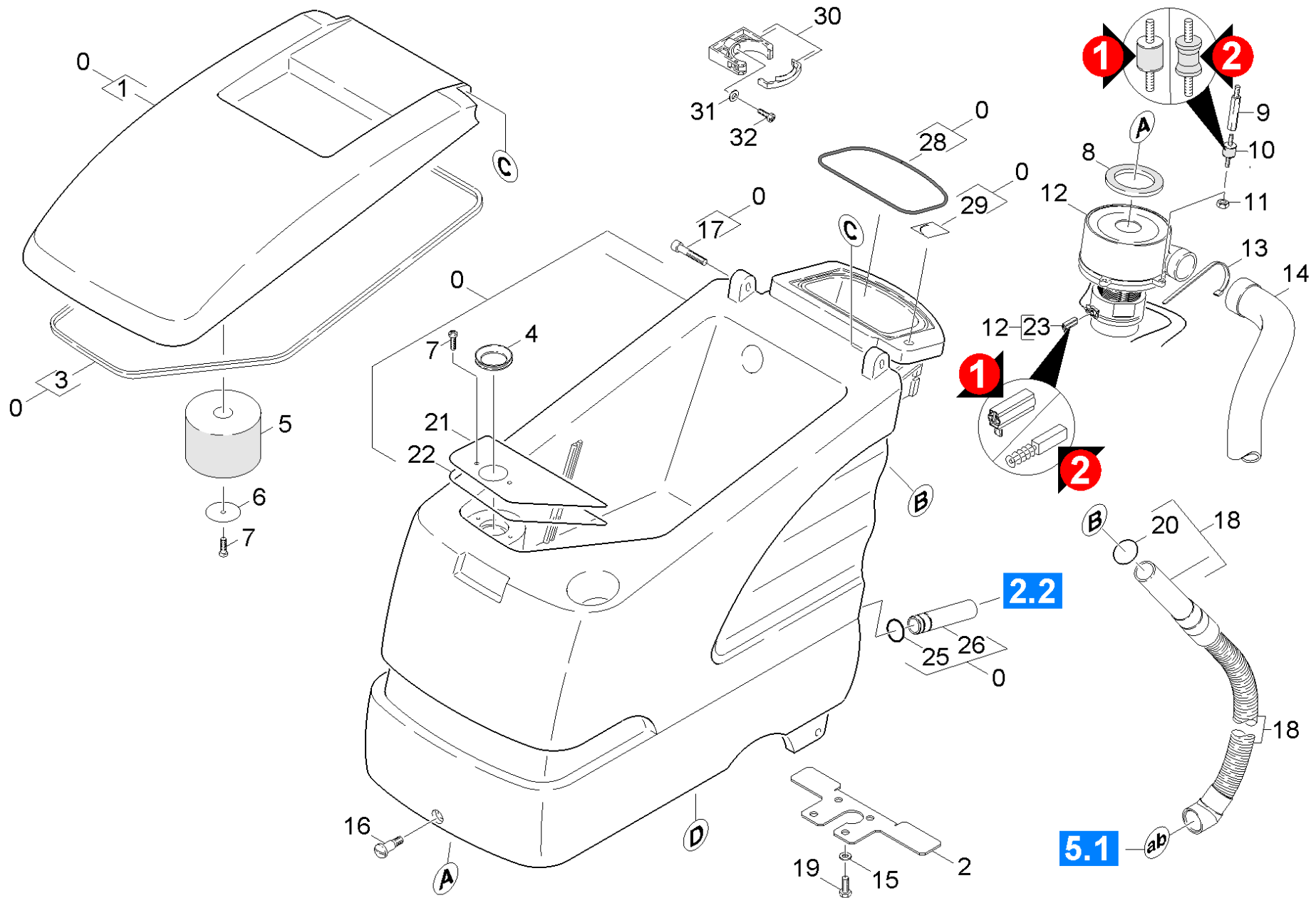


# 10 Cover and motor

Professional \ Floor cleaner \ Walk behind \ BD 530 Ep \ Spare parts list BD 530 Ep Ratio \ Cover and motor



# 10 Cover and motor

Professional \ Floor cleaner \ Walk behind \ BD 530 Ep \ Spare parts list BD 530 Ep Ratio \ Cover and motor



POS	Article no.	Description	Quantity	Unit	Foot note text
0	4.605-067.0	Housing and cover	1.000	ST	
	<b>Item text1:</b> /1.127-343.0				
0	4.605-093.0	Tank and cover Ratio	1.000	ST	
	<b>Item text1:</b> /1.127-342.0 / -442.0				
1	5.063-766.0	Cover	1.000	ST	
2	5.061-834.0	Stop suction bar	1.000	ST	
3	6.366-043.0	Sealing profile	2.000	M	
4	5.363-344.0	Joint ring	1.000	ST	
5	5.585-058.0	Float BR/BD 530	1.000	ST	
6	5.115-754.0	Washer	1.000	ST	
7	7.303-107.0	Screw 5x16 -10.9-P2R (K-In6Rd)	3.000	ST	
8	5.363-574.0	Joint ring	1.000	ST	
9	5.308-056.0	Stud bolt	3.000	ST	
10	6.339-262.0	Rubber buffer 2xM6 D22 H10	3.000	ST	VERSION 2
	<b>Item text1:</b> /1.127-343.0				
10	6.339-021.0	Rubber buffer 2xM6-D20 H15	3.000	ST	VERSION 1
	<b>Item text1:</b> /1.127-342.0 / -442.0				
11	7.311-541.0	Hexagon nut M 6-8-A2E EN 1661	3.000	ST	
12	4.035-056.0	Vacuum motor replacement	1.000	ST	
	<b>Item text1:</b> /1.127-343.0				
12	6.490-135.0	Vacuum motor 220-240V	1.000	ST	
	<b>Item text1:</b> /1.127-342.0 / -442.0				
13	6.642-107.0	Cable tie 8x330	2.000	ST	
14	6.390-215.0	Soundproof hose	1.000	ST	
15	7.312-017.0	Washer 8-A2 ISO 7089	8.000	ST	
16	5.305-204.0	Shaped screw	1.000	ST	
17	7.306-049.0	Cylinder head screw M 8x45-8.8-A2E ISO	2.000	ST	
18	4.390-002.0	Suction hose complete oil resistant	1.000	ST	STANDARD
18	4.390-002.0	Suction hose complete oil resistant	1.000	ST	OIL RESISTANT
19	7.304-516.0	Hexagonal head screw M8x20-A4-70 ISO 40	4.000	ST	
20	6.362-089.0	O-Ring seal 40,0 X 3,0	1.000	ST	
21	5.001-813.0	Plate	1.000	ST	
22	5.363-420.0	Seal	1.000	ST	

## 10 Cover and motor

Professional \ Floor cleaner \ Walk behind \ BD 530 Ep \ Spare parts list BD 530 Ep Ratio \ Cover and motor



POS	Article no.	Description	Quantity	Unit	Foot note text
23	6.610-221.0	Carbon brush set	1.000	ST	VERSION 1
	<b>Item text1:</b> /1.127-342.0 / -442.0				
23	6.490-264.0	Carbon brush set	1.000	ST	VERSION 2
	<b>Item text1:</b> /1.127-343.0				
25	6.362-385.0	O-Ring seal 26,0 X 2,5-NBR 70	1.000	ST	
26	5.128-352.0	Tube	1.000	ST	
28	6.273-196.0	Seal string cellular rubber	1.000	M	
	<b>Item text1:</b> /1.127-342.0 / -442.0				
28	6.273-195.0	Cord cellular rubber D7	1.000	ST	
	<b>Item text1:</b> /1.127-343.0				
29	5.382-594.0	Label water tap	1.000	ST	
30	6.373-692.0	Pipe clip D 63	1.000	ST	
31	7.312-017.0	Washer 8-A2 ISO 7089	1.000	ST	
32	7.306-031.0	Screw M 6x16-A2-70 DIN 7984	1.000	ST	