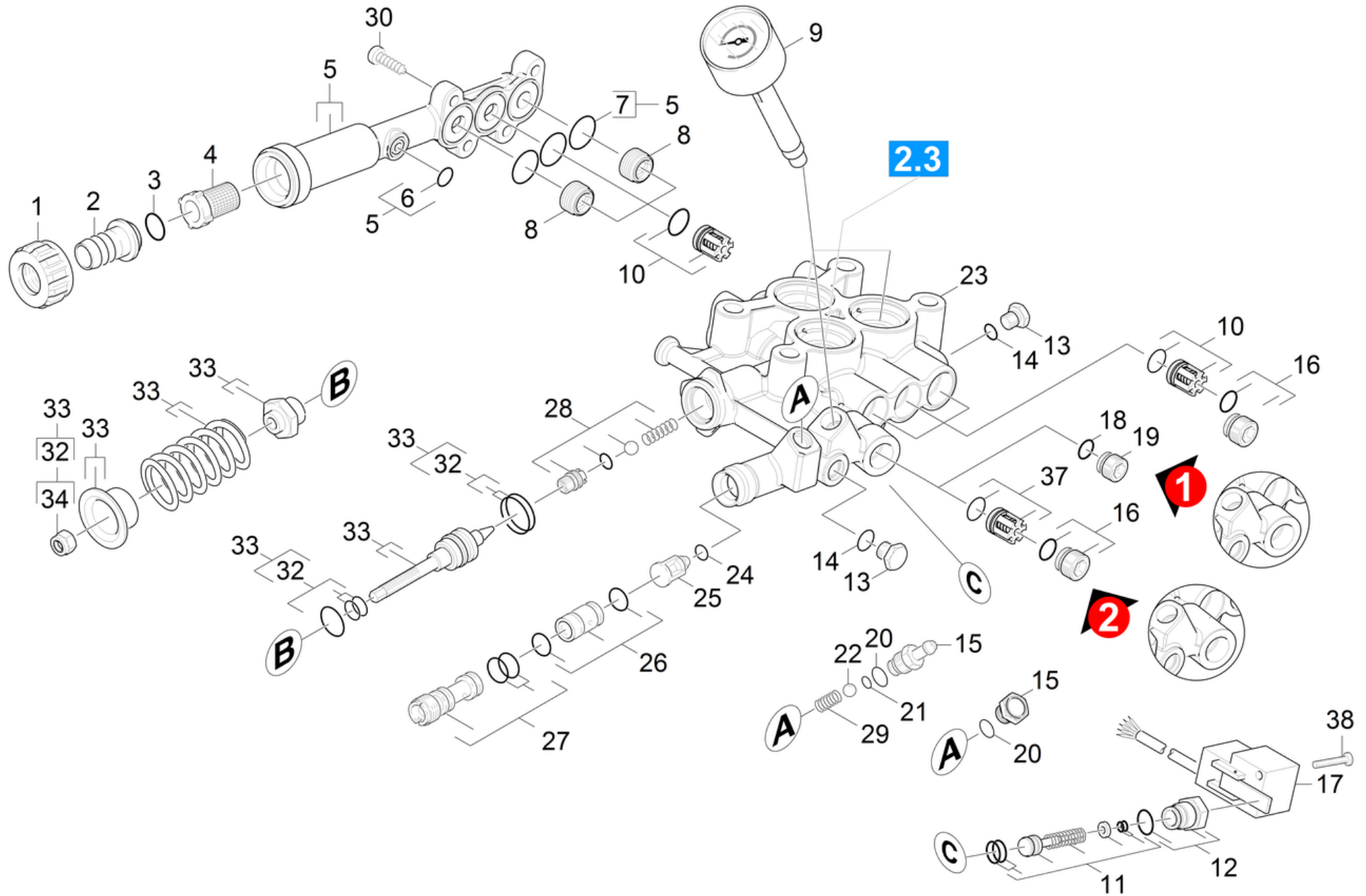


# 21 Cylinder head

Professional \ High pressure cleaner cold water \ Electric motor \ HD 7/18 -4M PLUS\*EU \ Spare parts list HD 7/18-4M \ Pump set \ Cylinder head



## 21 Cylinder head

Professional \ High pressure cleaner cold water \ Electric motor \ HD 7/18 -4M PLUS\*EU \ Spare parts list HD 7/18-4M \ Pump set \ Cylinder head



POS	Article no.	Description	Quantity	Unit	Remark
1	5.310-076.0	Nut	1	PC	
2	5.443-291.0	Hose stem	1	PC	
3	6.362-161.0	O-Ring seal 19,3 X 2,4	1	PC	
4	6.414-141.0	Strainer	1	PC	
5	4.064-005.0	Suction cover complete	1	PC	
6	6.362-388.0	O-Ring seal 8,0x1,5 -EPDM 70	1	PC	
7	6.363-536.0	O-Ring seal 21x1,5	3	PC	
8	5.583-177.0	Valve screw M20x1	3	PC	
9	4.423-024.0	Pressure gauge complete	1	PC	
10	2.884-512.0	Valve (3 Stueck)	1	PC	
11	2.884-869.0	Spare part set control piston	1	PC	
12	4.411-011.0	Spare part set HD 7/18 M	1	PC	
13	5.411-070.0	Screw plug	2	PC	
14	6.362-690.0	O-Ring seal 7x2 - NBR 70	2	PC	
15	5.411-516.0	Screw plug	1	PC	
	<b>Item text1:</b> 1.524-207.0				
15	5.443-624.0	Nipple	1	PC	
	<b>Item text1:</b> 1.524-200.0 /-201.0 /-208.0 /-210.0				
	<b>Item text2:</b> /-211.0				
16	4.483-001.0	Valve screw	4	PC	
17	6.635-493.0	2-Phases-Switch	1	PC	
18	6.362-528.0	O-Ring seal 9,5 X 2,0	1	PC	
19	5.411-168.0	Valve screw M16x1	1	PC	
20	6.362-690.0	O-Ring seal 7x2 - NBR 70	1	PC	
21	6.363-597.0	O-Ring seal 5,28 x 1,78	1	PC	
22	7.401-908.0	Sphere 7 G300 -1.4301 DIN 5401	1	PC	
23	4.550-722.0	Spare part set cylinder head	1	PC	
	<b>Item text1:</b> 1.524-200.0 / -207.0 /-208.0				
23	4.550-813.0	Spare part set cylinder head	1	PC	
24	6.363-613.0	O-Ring seal 4 x 2 -NBR90	1	PC	VERSION 1
25	4.584-022.0	Valve pin complete	1	PC	VERSION 1
26	2.884-853.0	Spare part set nozzle insert	1	PC	
27	4.769-052.0	Nozzle insert complete	1	PC	

## 21 Cylinder head

Professional \ High pressure cleaner cold water \ Electric motor \ HD 7/18 -4M PLUS\*EU \ Spare parts list HD 7/18-4M \ Pump set \ Cylinder head



POS	Article no.	Description	Quantity	Unit	Remark
28	4.481-226.0	Valve seat complete	1	PC	
29	5.332-258.0	Helical spring	1	PC	
30	7.306-023.0	Cylinder head screw M6x25 -8.8-A2E ISO4	4	PC	
32	2.884-551.0	Spare part set	1	PC	
33	2.884-550.0	Spare part set overflow valve	1	PC	
34	7.311-510.0	Hexagon nut M 8-8-A2E ISO 7040	1	PC	
37	4.580-594.0	Valve complete	1	PC	
38	7.306-320.0	Oval head screw M 5x40-A2-70 ISO 7045	1	PC	
100	2.884-883.0	Spare parts set pump high-pressure 7/18	1	PC	