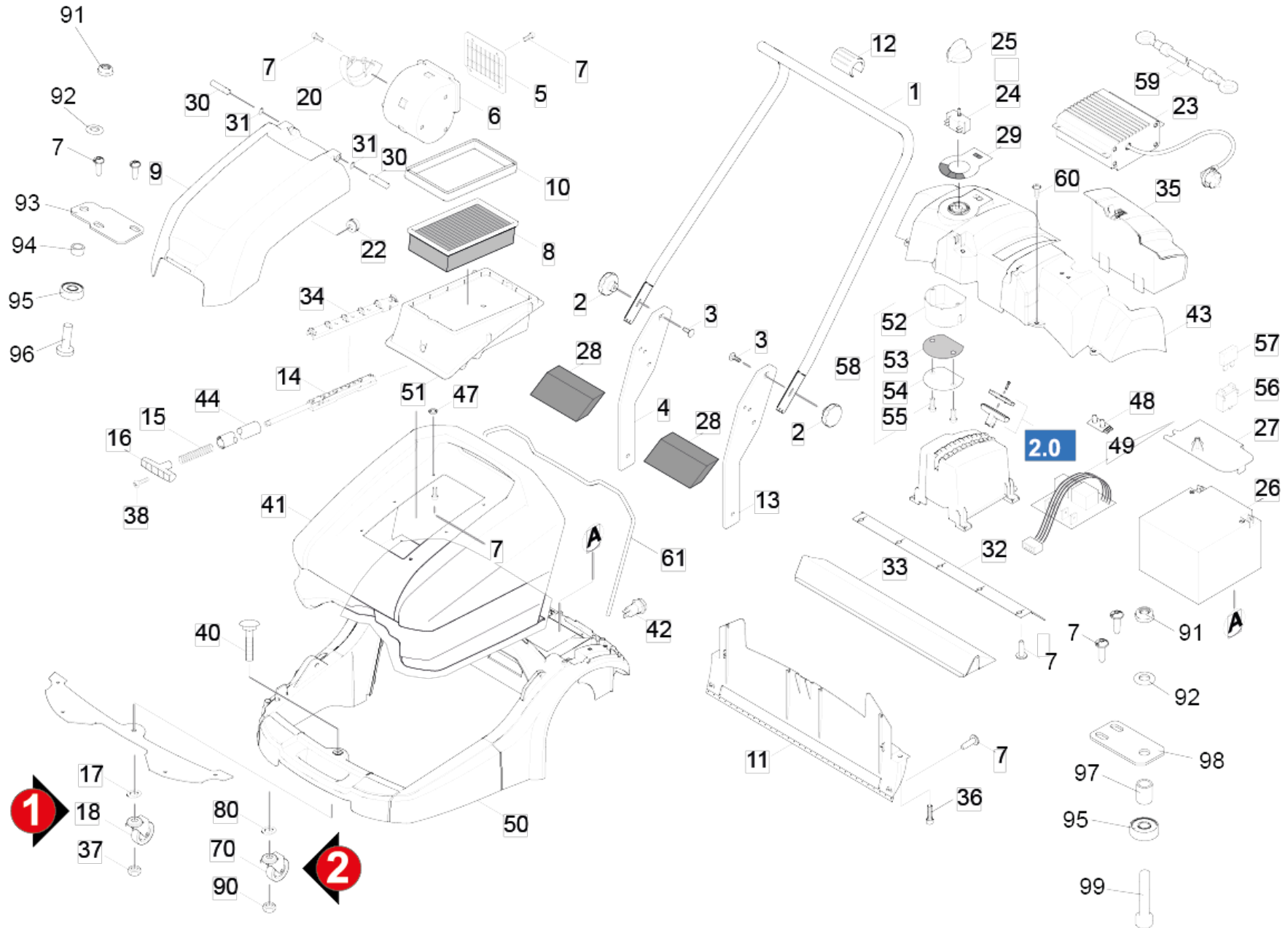


# 10 Individual parts

Professional \ Sweepers \ Walk behind \ Electric motor \ KM 70/30 C Bp \ Spare parts list KM 70/30 C \ Individual parts



## 10 Individual parts

Professional \ Sweepers \ Walk behind \ Electric motor \ KM 70/30 C Bp \ Spare parts list KM 70/30 C \ Individual parts



## 10 Individual parts

Professional \ Sweepers \ Walk behind \ Electric motor \ KM 70/30 C Bp \ Spare parts list KM 70/30 C \ Individual parts



POS	Article no.	Description	Quantity	Unit	Foot note text
95	7.401-149.0	Ball bearing 608-2RS -Wälzl.St DIN 625	2	PC	
26	6.654-202.0	Battery 12V 22AH	1	PC	
	<b>Item text1:</b> 1.517-203.0 / -204.0 / -207.0				
	<b>Item text2:</b> / -208.0				
23	6.654-203.0	Battery charger	1	PC	
	<b>Item text1:</b> 1.517-203.0 / -204.0				
23	6.654-263.0	Battery charger Japan 100V/50HZ 26Ah	1	PC	
	<b>Item text1:</b> 1.517-207.0				
23	6.654-234.0	Battery charger KFI 120V/60HZ 26Ah	1	PC	
	<b>Item text1:</b> 1.517-208.0				
49	6.682-832.0	Battery monitoring	1	PC	
	<b>Item text1:</b> 1.517-201/-202/-211/-212				
6	6.484-328.0	Blower completely	1	PC	
	<b>Item text1:</b> 1.517-202/-203				
30	5.317-184.0	Bolt with groove	2	PC	
59	4.041-025.0	Cable complete 500 mm	1	PC	
70	6.966-068.0	Castor	1	PC	VERSION 2
18	6.966-068.0	Castor	1	PC	VERSION 1
48	6.682-776.0	Circuit board LED BR/BD 40/25	1	PC	
12	6.373-867.0	Clamp	1	PC	
58	2.641-769.0	Conversion kit dust protection switch	1	PC	
54	5.010-109.0	Cover	1	PC	
35	5.654-073.0	Cover batterie shed	1	PC	
27	5.032-928.0	Covering cap battery	1	PC	
20	5.032-916.0	Covering cap blower	1	PC	
	<b>Item text1:</b> 1.517-202.0 / -203.0 / -207.0 / -208.0				
43	5.068-000.0	Cover with hinge	1	PC	
99	7.306-075.0	Cylinder head screw M 8x 40-8.8-A2E ISO	1	PC	
51	5.033-914.0	Filter box	1	PC	
28	5.731-625.0	Filter cartridge for KM 70/30 C	2	PC	
14	5.032-907.0	Filter vibrator	1	PC	
	<b>Item text1:</b> 1.517-202.0 / -203.0 / -207.0 / -208.0				
29	5.391-248.0	Foil control panel KM 70/30	1	PC	

## 10 Individual parts

Professional \ Sweepers \ Walk behind \ Electric motor \ KM 70/30 C Bp \ Spare parts list KM 70/30 C \ Individual parts

POS	Article no.	Description	Quantity	Unit	Foot note text
50	5.050-277.0	Frame KM_70/30	1	PC	
56	6.644-216.0	Fuse holder	1	PC	
57	7.644-018.0	Fuse insert C15 DIN 72581-3	1	PC	
32	6.903-801.0	Ground lip	1	PC	
16	5.322-108.0	Handhold filter vibrator	1	PC	
	<b>Item text1:</b> 1.517-202.0 / -203.0 / -207.0 / -208.0				
25	4.035-608.0	Handhold operational concept complete	1	PC	
15	5.332-073.0	Helical spring	1	PC	
	<b>Item text1:</b> 1.517-202.0 / -203.0 / -207.0 / -208.0				
91	7.311-427.0	Hexagon nut M8-04-A2E DIN 985	2	PC	
90	7.311-423.0	Hexagon nut M10 -04-A2E DIN 985	1	PC	VERSION 2
37	7.311-511.0	Hexagon nut M10-8-A2K ISO 7040	1	PC	VERSION 1
33	6.903-800.0	Holder ground lips sweep tank	1	PC	
47	6.472-969.0	Joint ring	6	PC	
31	7.343-047.0	Lock washer 10-FST-A2E DIN 6799	2	PC	
9	5.215-005.0	Moulded part flap blower	1	PC	
	<b>Item text1:</b> 1.517-202.0 / -203.0 / -207.0 / -208.0				
8	6.904-367.0	Planfilter - Torr smuts / Grönt	1	PC	
	<b>Item text1:</b> 1.517-202.0 / -203.0 / -207.0 / -208.0				
98	5.008-916.0	Plate support left	1	PC	
93	5.008-915.0	Plate support right	1	PC	
42	6.646-697.0	Plug socket battery charger external	1	PC	
	<b>Item text1:</b> 1.517-201.0 / -202.0				
5	5.394-776.0	Protection part blower	1	PC	
	<b>Item text1:</b> 1.517-202.0 / -203.0 / -207.0 / -208.0				
11	5.032-641.0	Rear skirting	1	PC	
3	7.303-194.0	Saucer-head screw M8x25 -St-A0P DIN 603	2	PC	
40	7.303-222.0	Saucer-head screw M10x80 -St-A0P DIN 603	1	PC	
38	7.303-129.0	Screw 4x16-10.9-R2R (K-In6Rd)	1	PC	
	<b>Item text1:</b> 1.517-202.0 / -203.0 / -207.0 / -208.0				
55	7.303-129.0	Screw 4x16-10.9-R2R (K-In6Rd)	2	PC	
7	7.303-107.0	Screw 5x16 -10.9-P2R (K-In6Rd)	11	PC	
36	7.303-086.0	Screw 5x30 -10.9-R2R (K-In6Rd)	6	PC	

## 10 Individual parts

Professional \ Sweepers \ Walk behind \ Electric motor \ KM 70/30 C Bp \ Spare parts list KM 70/30 C \ Individual parts

POS	Article no.	Description	Quantity	Unit	Foot note text
60	7.303-112.0	Screw 6x20 -10.9-R2R (In6Rd)	16	PC	
96	7.306-230.0	Screw M8x25-A4-70 (In6Rd)	1	PC	
53	6.640-271.0	Seal	1	PC	
61	6.365-025.0	Sealing profile 5,5x9	1	m	
10	6.365-025.0	Sealing profile 5,5x9	1	m	
	<b>Item text1:</b> 1.517-202.0 / -203.0 / -207.0 / -208.0				
13	5.057-855.0	Sheet metal component left	1	PC	
4	5.057-790.0	Sheet metal component right	1	PC	
94	5.112-517.0	Sleeve	1	PC	
97	5.110-651.0	Sleeve	1	PC	
34	5.030-900.0	Stripper	1	PC	
	<b>Item text1:</b> 1.517-202.0 / -203.0 / -207.0 / -208.0				
41	4.070-955.0	Sweep tank complete replacement	1	PC	
	<b>Item text1:</b> 1.517-202.0 / -203.0 / -207.0 / -208.0				
41	4.070-952.0	Sweep tank replacement	1	PC	
	<b>Item text1:</b> 1.517-201.0 / -204.0				
24	6.635-549.0	Switch control panel	1	PC	
52	5.010-108.0	Tin dust protection	1	PC	
44	5.027-291.0	Tube filter vibrator	1	PC	
1	5.128-775.0	Tube shearing shackle	1	PC	
2	6.321-177.0	Turning knob yellow D55mm	2	PC	
92	7.312-004.0	Washer 8 -200HV-A3E ISO 7089	2	PC	
17	7.312-005.0	Washer 10-200HV-A3E ISO 7089	2	PC	VERSION 1
80	7.312-005.0	Washer 10-200HV-A3E ISO 7089	4	PC	VERSION 2
22	6.641-638.0	Wire protecting sleeve	1	PC	