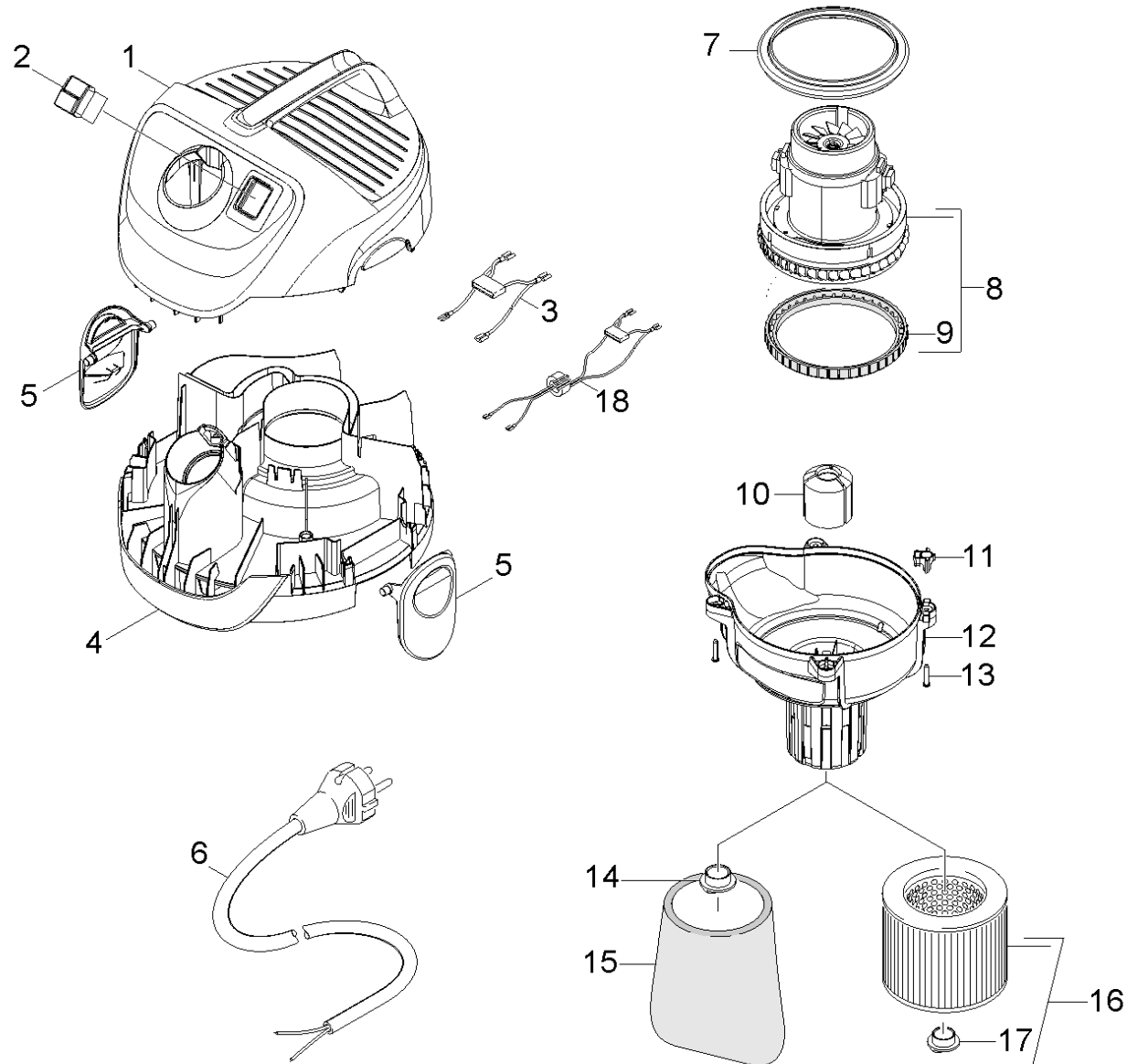


10 Appliance individual parts

Home and Garden \ Vacuum cleaner \ Wet-/Dry vacuum cleanerwet \ WD 2.200 *EU-I \ Spare parts list WD 2.200 \ Appliance individual parts



10 Appliance individual parts

Home and Garden \ Vacuum cleaner \ Wet-/Dry vacuum cleanerwet \ WD 2.200 *EU-I \ Spare parts list WD 2.200 \ Appliance individual parts



POS	Article no.	Description	Quantity	Unit	Remark
9	5.365-324.0	Bearing motor height compensation	1	PC	
	Item text1: 1.629-550.0 / -551.0 / -552.0 / -553.0				
	Item text2: / -554.0 / -556.0 / -557.0 / -558.0				
9	5.731-657.0	Bearing turbine new CER	1	PC	
	Item text1: 1.629-555.0				
3	4.649-109.0	Cable with capacitor 100/120V	1	PC	
	Item text1: 1.629-555.0				
3	6.650-121.0	Cable with capacitor DNA	1	PC	
	Item text1: 1.629-554.0				
6	6.649-148.0	Cable with plug *AU	1	PC	*AU
6	6.651-973.3	Cable with plug *CH - 4,5m (H05 VV-F 2x0	1	PC	*GB
6	6.647-996.0	Cable with plug *EU Cable with plug	1	PC	*EU
6	6.650-092.0	Cable with plug H05 VV-F 2x0,75 *CH	1	PC	*CH
16	2.863-303.0	Cartridge filter WD/SE	1	PC	
5	5.075-033.0	Closure	2	PC	
17	4.075-012.0	Closure complete	1	PC	
14	9.036-691.0	Covering cap	1	PC	
1	5.069-312.0	Cover neutrally WD 2 / WD 2.XXX	1	PC	
15	5.731-595.0	Filter	1	PC	
12	5.731-647.0	Filtering basket	1	PC	
10	5.628-013.3	Floater	1	PC	
4	5.053-184.0	Motor bracket	1	PC	
11	5.034-734.0	Retaining bracket	1	PC	
	Item text1: 1.629-550.0 / -551.0 / -552.0 / -553.0				
	Item text2: / -554.0 / -556.0 / -557.0 / -558.0				
11	5.034-736.0	Retaining bracket cable	1	PC	
	Item text1: 1.629-555.0				
13	6.303-150.0	Screw 4,2x 22	4	PC	
7	9.079-024.0	Seal motor above	1	PC	
3	2.884-135.0	Spare part set cable	1	PC	
	Item text1: 1.629-551.0 / -552.0 / -553.0 / -554.0				
	Item text2: / -556.0 / -557.0 / -558.0				
6	7.777-999.0	Stockpiling discontinued	1	PC	*CN

10 Appliance individual parts

Home and Garden \ Vacuum cleaner \ Wet-/Dry vacuum cleanerwet \ WD 2.200 *EU-I \ Spare parts list WD 2.200 \ Appliance individual parts

POS	Article no.	Description	Quantity	Unit	Remark
6	7.777-999.0	Stockpiling discontinued	1	PC	*JP
18	7.777-999.0	Stockpiling discontinued	1	PC	
	Item text1: 1.629-550.0				
2	6.630-087.3	Switch	1	PC	
8	4.490-266.0	Vacuum motor complete for replacement 10	1	PC	
	Item text1: 1.629-550.0 / -551.0 / -552.0				
	Item text2: / -554.0 / -557.0 / -558.0				
8	4.490-268.0	Vacuum motor complete for replacement 10	1	PC	
	Item text1: 1.629-554.0				
8	4.490-265.0	Vacuum motor complete for replacement 1000W	1	PC	
	Item text1: 1.629-555.0				
8	4.490-000.0	Vacuum motor complete for replacement Cu	1	PC	1.629-553.0, 1.629-556.0