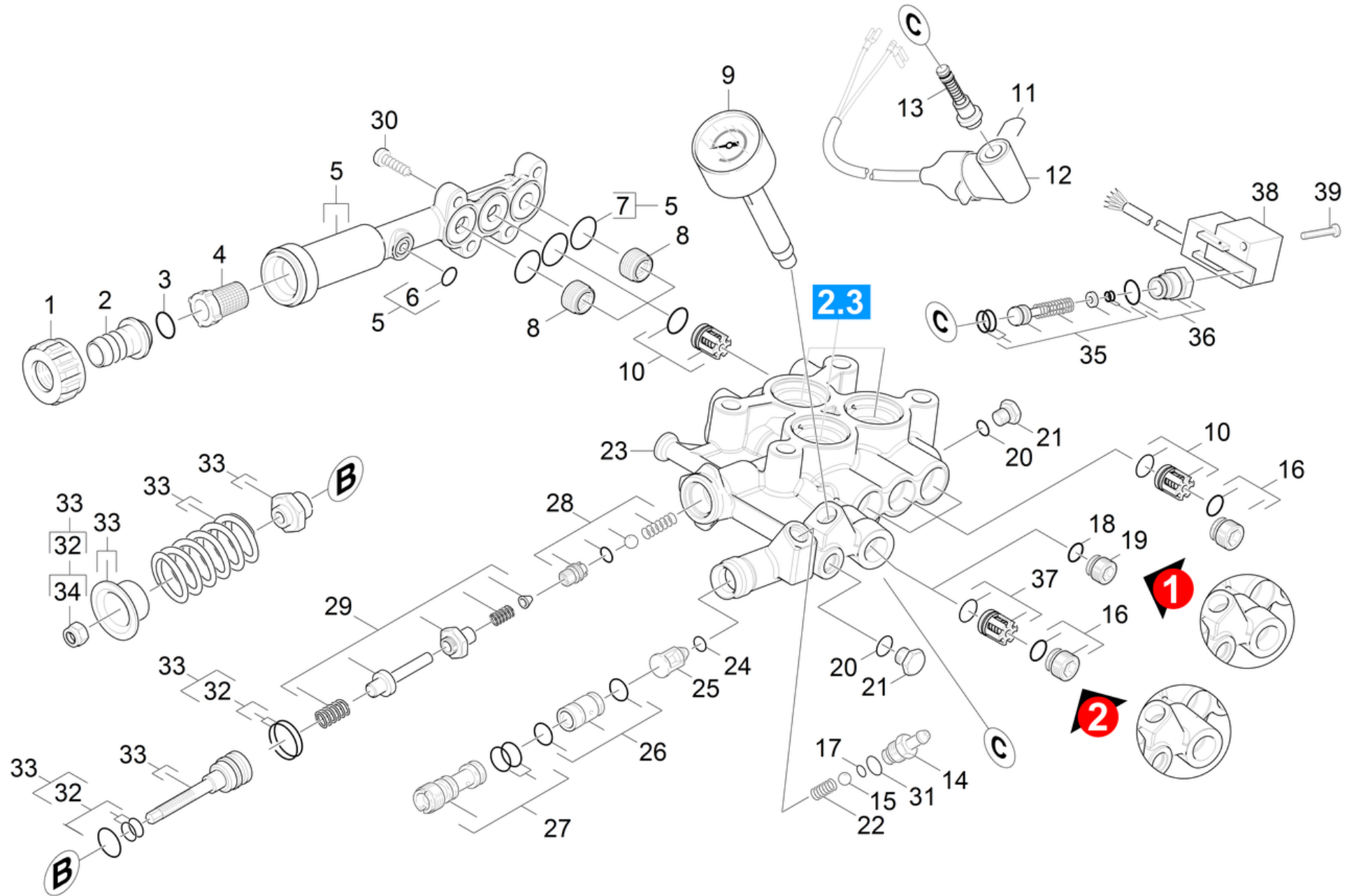


# 21 Cylinder head

Professional \ High pressure cleaner cold water \ Electric motor \ HD 6/16 - 4 MX \*EU \ Spare parts list HD 6/16 \ Pump set \ Cylinder head



## 21 Cylinder head

Professional \ High pressure cleaner cold water \ Electric motor \ HD 6/16 - 4 MX \*EU \ Spare parts list HD 6/16 \ Pump set \ Cylinder head



POS	Article no.	Description	Quantity	Unit	Remark
1	5.310-076.0	Nut	1.000	ST	
2	5.443-291.0	Hose stem	1.000	ST	
3	6.362-161.0	O-Ring seal 19,3 X 2,4	1.000	ST	
4	6.414-141.0	Strainer	1.000	ST	
5	4.064-005.0	Suction cover complete	1.000	ST	
6	6.362-388.0	O-Ring seal 8,0x1,5 -EPDM 70	1.000	ST	
7	6.363-536.0	O-Ring seal 21x1,5	3.000	ST	
8	5.583-177.0	Valve screw M20x1	2.000	ST	
9	4.423-024.0	Pressure gauge complete	1.000	ST	
10	2.884-512.0	Valve (3 Stueck)	2.000	ST	
11	5.034-494.0	Retaining bracket	1.000	ST	
12	4.744-221.0	Switch complete only for replacement	1.000	ST	
	<b>Item text1:</b> /1.524-110.0				
12	4.744-168.0	Switch complete	1.000	ST	
	<b>Item text1:</b> 1.524-100.0 / -105.0 / -107.0 / -112.0				
	<b>Item text2:</b> /-113.0				
12	4.744-201.0	Switch complete	1.000	ST	
	<b>Item text1:</b> /1.524-106.0				
13	2.883-988.0	SPARE PARTS SET	1.000	ST	
14	5.443-624.0	Nipple	1.000	ST	
15	7.401-908.0	Sphere 7 G300 -1.4301 DIN 5401	1.000	ST	
16	4.483-001.0	Valve screw	4.000	ST	
17	6.363-597.0	O-Ring seal 5,28 x 1,78	1.000	ST	
18	6.362-528.0	O-Ring seal 9,5 X 2,0	1.000	ST	VERSION 1
	<b>Item text1:</b> 1.524-103.0 /-104.0				
19	5.411-168.0	Valve screw M16x1	1.000	ST	VERSION 1
20	6.362-690.0	O-Ring seal 7x2 - NBR 70	1.000	ST	
21	5.411-070.0	Screw plug	1.000	ST	
22	5.332-258.0	Helical spring	1.000	ST	
23	4.550-700.0	Cylinder head	1.000	ST	TR-Thread > for M22 1,5 use Adapter 4.111-034.0
	<b>Item text1:</b> 1.524-100.0 / -103.0 / -104.0 / -107.0 /				
	<b>Item text2:</b> -112.0 /-113.0				
23	4.550-813.0	Spare part set cylinder head	1.000	ST	

## 21 Cylinder head

Professional \ High pressure cleaner cold water \ Electric motor \ HD 6/16 - 4 MX \*EU \ Spare parts list HD 6/16 \ Pump set \ Cylinder head



POS	Article no.	Description	Quantity	Unit	Remark
	<b>Item text1:</b> /1.524-105.0				
23	4.550-804.0	Cylinder head	1.000	ST	
	<b>Item text1:</b> /1.524-106.0/-110.0				
24	6.363-613.0	O-Ring seal 4 x 2 -NBR90	1.000	ST	VERSION 1
25	4.584-022.0	Valve pin complete	1.000	ST	VERSION 1
26	2.884-853.0	Spare part set nozzle insert	1.000	ST	
	<b>Item text1:</b> 1.524-105.0				
26	2.884-852.0	Spare part set nozzle insert	1.000	ST	
	<b>Item text1:</b> 1.524-100.0 / -103.0 / -104.0 / -106.0 /				
	<b>Item text2:</b> -107.0 / -110.0 /-112.0 /-113.0				
27	4.769-052.0	Nozzle insert complete	1.000	ST	
28	4.481-237.0	Valve seat complete only for replacement	1.000	ST	
29	2.884-856.0	Spare part set excess-current	1.000	ST	
30	7.306-023.0	Cylinder head screw M6x25 -8.8-A2E ISO4	4.000	ST	
31	6.362-690.0	O-Ring seal 7x2 - NBR 70	1.000	ST	
32	2.884-551.0	Spare part set	1.000	ST	
33	4.591-058.0	Set excess-current	1.000	ST	
	<b>Item text1:</b> 1.524-104.0 / -105.0				
33	4.591-054.0	Set excess-current	1.000	ST	
	<b>Item text1:</b> 1.524-100.0 / -103.0 / -106.0 / -107.0 /				
	<b>Item text2:</b> -110.0 /-112.0 /-113.0				
34	7.311-510.0	Hexagon nut M 8-8-A2E ISO 7040	1.000	ST	
35	2.884-869.0	Spare part set control piston	1.000	ST	
36	4.411-011.0	Spare part set HD 7/18 M	1.000	ST	
37	4.580-594.0	Valve complete	1.000	ST	
38	6.635-493.0	2-Phases-Switch	1.000	ST	
	<b>Item text1:</b> 1.524-103.0 /-104.0				
39	7.306-320.0	Oval head screw M 5x40-A2-70 ISO 7045	1.000	ST	
100	2.884-883.0	Spare parts set pump high-pressure 7/18	1.000	ST	
	<b>Item text1:</b> /1.524-105.0				
100	2.884-347.0	Pump set HD 6/16 M	1.000	ST	
	<b>Item text1:</b> 1.524-100.0 / -106.0 / -107.0 / -110.0				
	<b>Item text2:</b> -112.0 /-113.0				