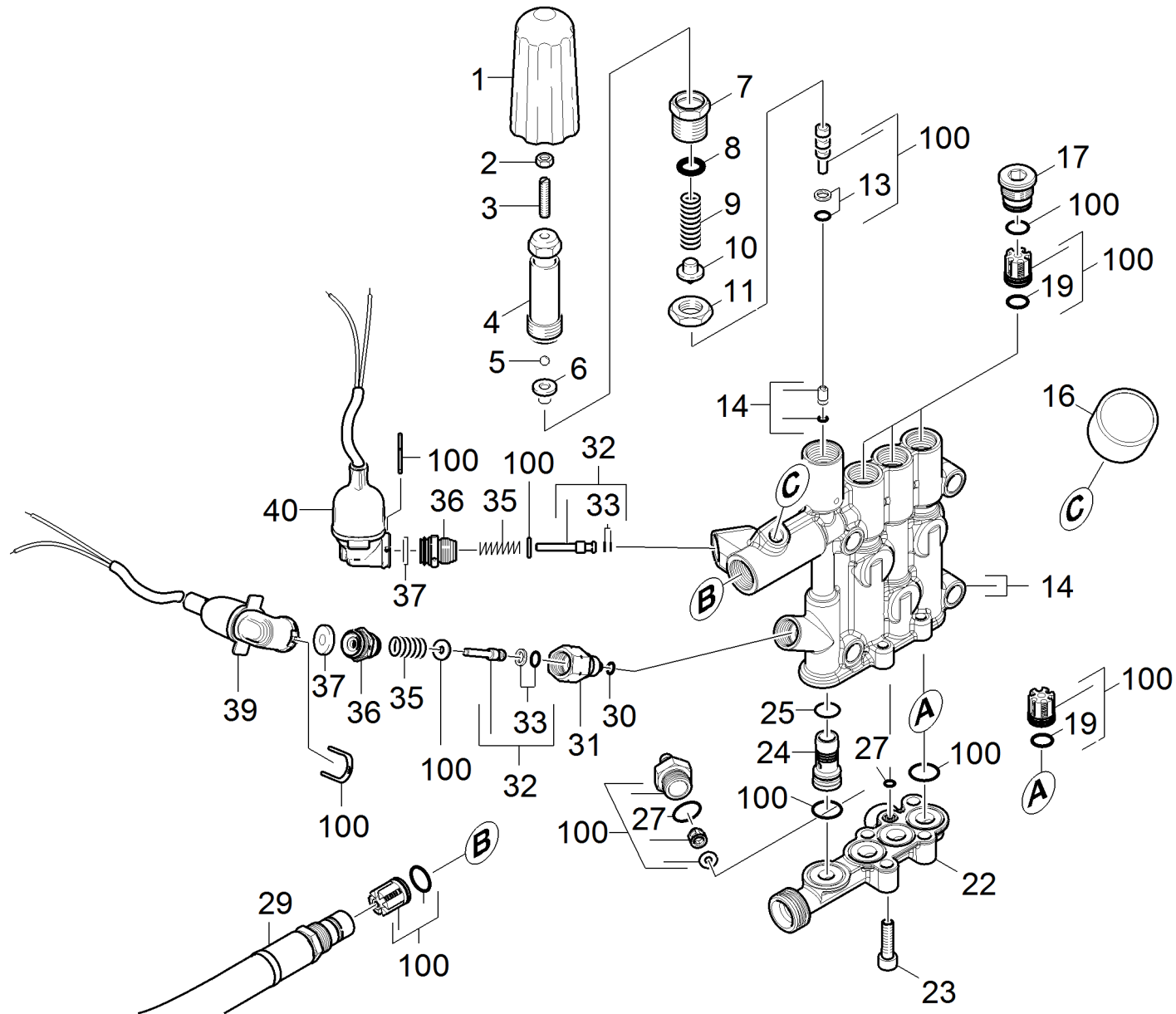


# 21 Cylinder head

Professional \ High pressure cleaner hotwater \ Electric motor \ HDS 6/14-4 C \*EU \ Spare parts list HDS 6/14-4C \ Pump set \ Cylinder head



## 21 Cylinder head

Professional \ High pressure cleaner hotwater \ Electric motor \ HDS 6/14-4 C \*EU \ Spare parts list HDS 6/14-4C \ Pump set \ Cylinder head



POS	Article no.	Description	Quantity	Unit
29	6.393-085.0	Connection hose DN8 31,5MPa 0,302m	1	PC
14	4.550-995.3	Cylinder head complete only for replacem	1	PC
23	7.306-043.0	Cylinder head screw M8x30 -8.8-A2E ISO	4	PC
37	5.367-003.0	Diaphragm	2	PC
1	5.322-103.0	Handle	1	PC
35	5.332-268.0	Helical spring	2	PC
9	5.332-444.0	Helical spring	1	PC
4	5.304-070.0	Hexagonal head screw	1	PC
2	7.311-002.0	Hexagon nut M5 -6-A2E ISO 4032	1	PC
11	5.311-204.0	Hexagon nut M22x1,5	1	PC
7	5.404-082.0	Hollow screw	1	PC
31	5.402-705.3	Joining piece	1	PC
22	5.427-439.3	Manifold water intake for replacement	1	PC
30	6.362-853.0	O-Ring seal 4,47x1,78	1	PC
19	6.363-003.0	O-Ring seal 13,0 X 2,0-NBR 90	6	PC
25	6.362-381.0	O-Ring seal 13x2 - NBR 70	1	PC
27	6.362-427.0	O-Ring seal 15,0x2,0	1	PC
8	6.362-079.0	O-Ring seal 18,0 X 2,5	1	PC
13	6.362-468.0	O-Ring seal complete 1ST.-R.	1	PC
33	6.363-037.0	O-Ring seal complete 1ST.-R.	2	PC
32	4.553-197.0	Piston complete only for replacement	2	PC
16	4.422-990.0	Pressure gauge complete only for replace	1	PC
100	2.884-008.0	Pump set	1	PC
36	5.411-148.0	Screw plug	2	PC
24	5.110-815.0	Sleeve	1	PC
5	7.401-931.0	Sphere 5 KI3 -1.4401 DIN 5401	1	PC
39	4.744-225.3	Switch complete	1	PC
40	4.744-224.0	Switch complete	1	PC
3	7.307-017.0	Threaded pin M5x40 -St-45H-A2E ISO 4026	1	PC
6	5.582-121.0	Valve disc	1	PC
10	5.584-114.0	Valve pin	1	PC
17	5.583-146.3	Valve screw	3	PC