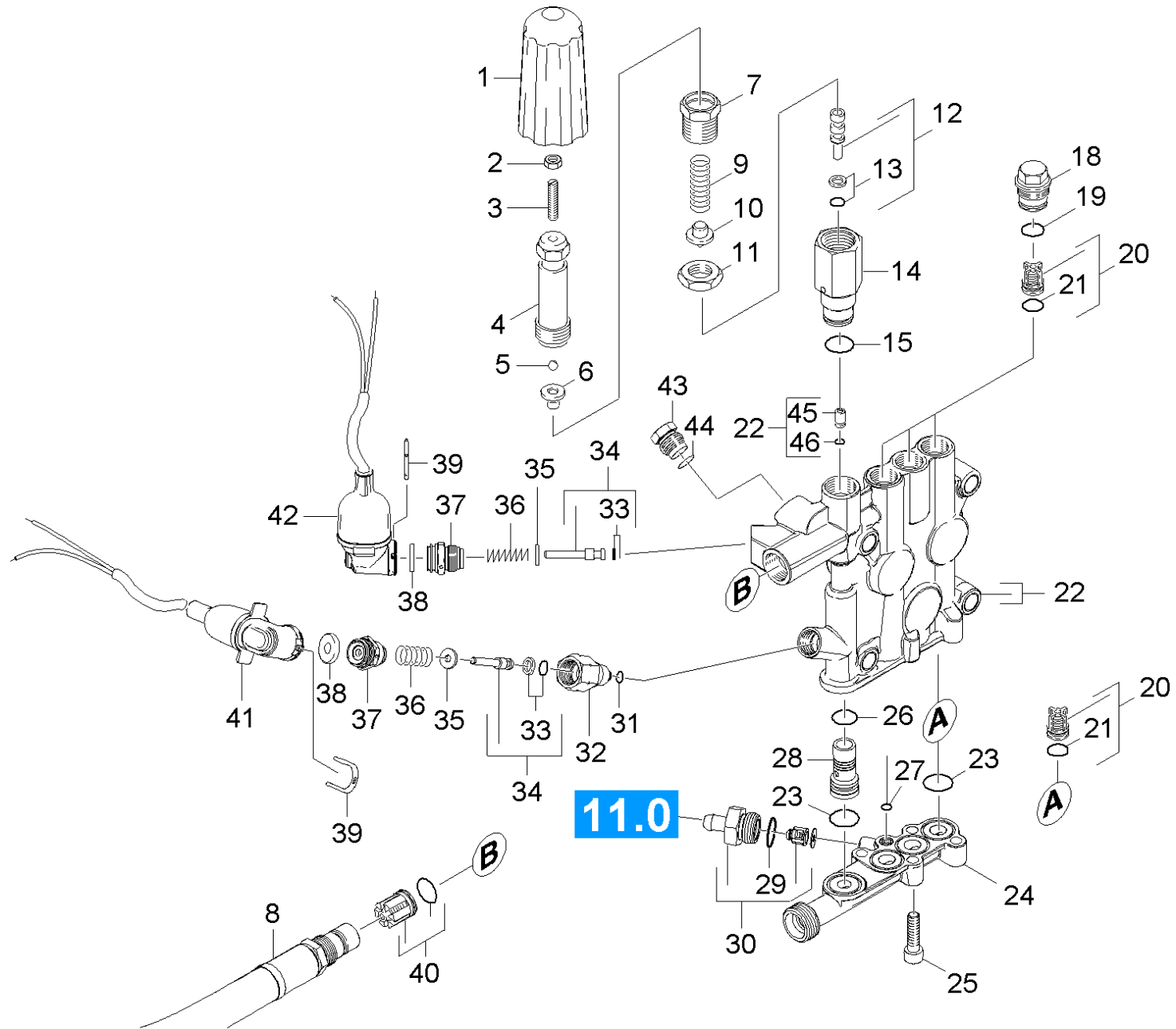


21 Cylinder head

Professional \ High pressure cleaner hotwater \ Electric motor \ HDS 10/20-4 M Classic *EU-I \ Spare parts list HDS 10/20 -4M CLASSIC * \ Pump set \ Cylinder head



21 Cylinder head

Professional \ High pressure cleaner hotwater \ Electric motor \ HDS 10/20-4 M Classic *EU-I \ Spare parts list HDS 10/20 -4M CLASSIC * \ Pump set \ Cylinder head



| POS | Article no. | Description | Quantity | Unit |
|-----|-------------|---|----------|------|
| 35 | 5.115-796.0 | Washer | 2.000 | ST |
| 45 | 5.581-239.0 | Valve seat | 1.000 | ST |
| 18 | 5.583-146.3 | Valve screw | 3.000 | ST |
| 10 | 5.584-114.0 | Valve pin | 1.000 | ST |
| 6 | 5.582-121.0 | Valve disc | 1.000 | ST |
| 30 | 4.580-581.3 | Valve complete | 1.000 | ST |
| 40 | 4.580-594.0 | Valve complete | 1.000 | ST |
| 20 | 2.884-512.0 | Valve (3 Stueck) | 2.000 | ST |
| 3 | 7.307-017.0 | Threaded pin M5x40 -St-45H-A2E ISO 4026 | 1.000 | ST |
| 41 | 4.744-225.3 | Switch complete | 1.000 | ST |
| 42 | 4.744-224.0 | Switch complete | 1.000 | ST |
| 5 | 7.401-931.0 | Sphere 5 KI3 -1.4401 DIN 5401 | 1.000 | ST |
| 100 | 2.885-034.0 | Spare part set pump | 1.000 | ST |
| 28 | 5.110-865.0 | Sleeve | 1.000 | ST |
| 37 | 5.411-148.0 | Screw plug | 2.000 | ST |
| 43 | 5.411-504.0 | Screw plug | 1.000 | ST |
| 39 | 5.034-494.0 | Retaining bracket | 2.000 | ST |
| 34 | 4.553-197.0 | Piston complete only for replacement | 2.000 | ST |
| 12 | 4.553-287.0 | Piston complete | 1.000 | ST |
| 33 | 6.363-037.0 | O-Ring seal complete 1ST.-R. | 2.000 | ST |
| 13 | 6.362-468.0 | O-Ring seal complete 1ST.-R. | 1.000 | ST |
| 23 | 6.363-536.0 | O-Ring seal 21x1,5 | 4.000 | ST |
| 15 | 6.362-427.0 | O-Ring seal 15,0x2,0 | 1.000 | ST |
| 29 | 6.362-427.0 | O-Ring seal 15,0x2,0 | 1.000 | ST |
| 19 | 6.362-481.0 | O-Ring seal 14,0 x 2,0 NBR 80 | 3.000 | ST |
| 26 | 6.362-381.0 | O-Ring seal 13x2 - NBR 70 | 1.000 | ST |
| 21 | 6.363-003.0 | O-Ring seal 13,0 X 2,0-NBR 90 | 6.000 | ST |
| 44 | 6.362-176.0 | O-Ring seal 6,07x1,78 | 1.000 | ST |
| 27 | 6.362-703.0 | O-Ring seal 6,0x1,5-NBR 70 | 1.000 | ST |
| 46 | 6.362-386.0 | O-Ring seal 5,0 x 1,5-NBR 80 | 1.000 | ST |
| 31 | 6.362-853.0 | O-Ring seal 4,47x1,78 | 1.000 | ST |
| 24 | 5.427-418.0 | Manifold water intake | 1.000 | ST |
| 32 | 5.402-705.3 | Joining piece | 1.000 | ST |

21 Cylinder head

Professional \ High pressure cleaner hotwater \ Electric motor \ HDS 10/20-4 M Classic *EU-I \ Spare parts list HDS 10/20 -4M CLASSIC * \ Pump set \ Cylinder head

KÄRCHER

| POS | Article no. | Description | Quantity | Unit |
|-----|-------------|--|----------|------|
| 8 | 4.440-796.0 | Hose SDS | 1.000 | ST |
| 7 | 5.404-082.0 | Hollow screw | 1.000 | ST |
| 11 | 5.311-204.0 | Hexagon nut M22x1,5 | 1.000 | ST |
| 2 | 7.311-002.0 | Hexagon nut M5 -8-A2E ISO 4032 | 1.000 | ST |
| 4 | 5.304-070.0 | Hexagonal head screw | 1.000 | ST |
| 9 | 5.332-444.0 | Helical spring | 1.000 | ST |
| 36 | 5.332-268.0 | Helical spring | 2.000 | ST |
| 1 | 5.322-103.0 | Handle | 1.000 | ST |
| 38 | 5.367-030.0 | Diaphragm | 2.000 | ST |
| 25 | 7.306-043.0 | Cylinder head screw M8x30 -8.8-A2E ISO | 4.000 | ST |
| 22 | 4.550-886.0 | Cylinder head complete | 1.000 | ST |
| 14 | 5.402-746.0 | Connection piece | 1.000 | ST |