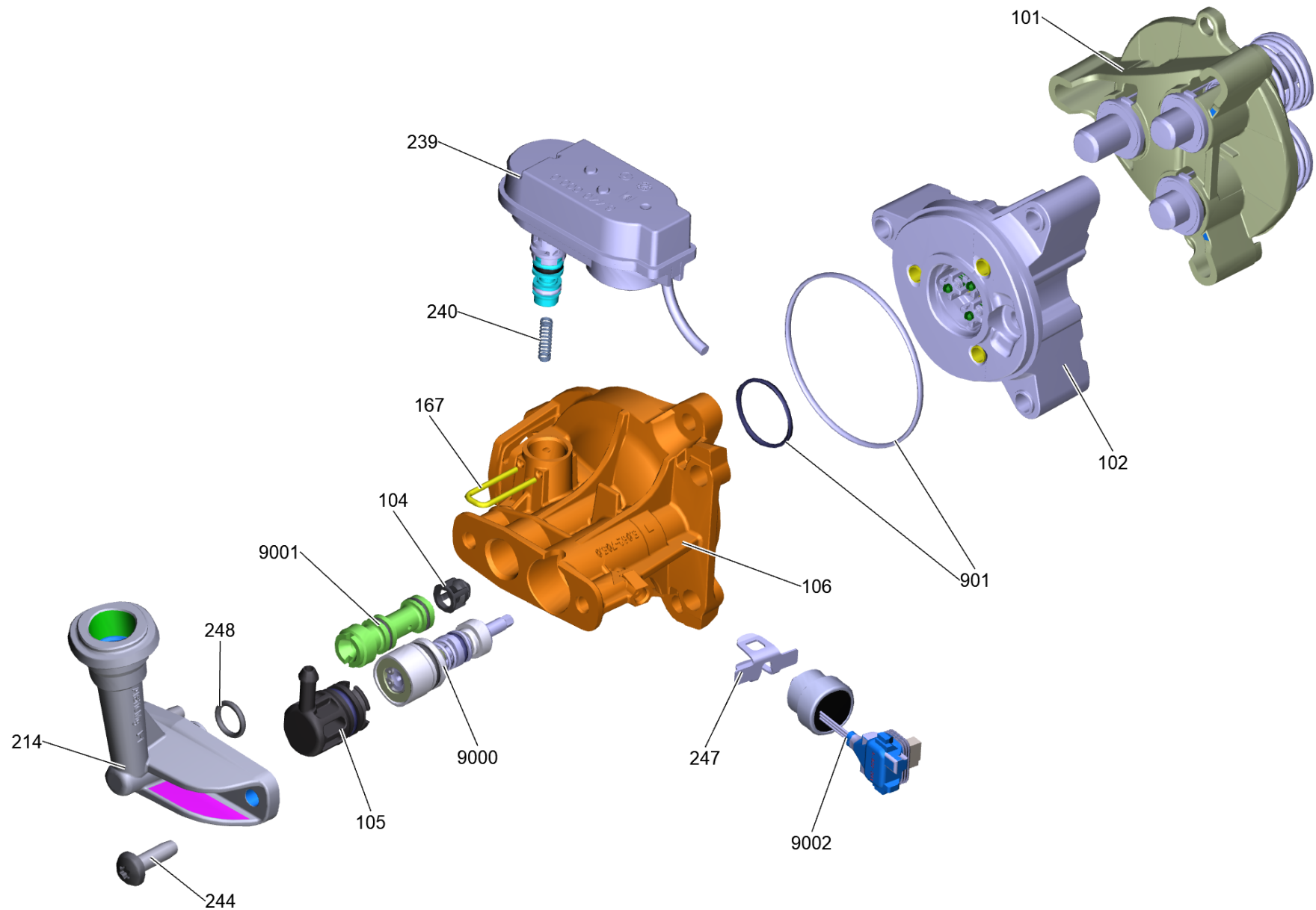


51 Pump head complete K7 Smart

Home and Garden \ High pressure cleaner cold water \ Electric motor \ K 7 \ K 7 Premium Smart Control Flex *EU \ Pump set complete K7 Smart *EU \ Pump head complete K7 Smart



51 Pump head complete K7 Smart

Home and Garden \ High pressure cleaner cold water \ Electric motor \ K 7 \ K 7 Premium Smart Control Flex *EU \ Pump set complete K7 Smart *EU \ Pump head complete K7 Smart

KÄRCHER

| POS | Article no. | Description | Quantity | Unit |
|------|-------------|--|----------|------|
| 167 | 5.048-048.0 | Clamp | 1 | PC |
| 247 | 5.048-047.0 | Clamp pressure sensor | 1 | PC |
| 102 | 9.002-525.0 | Cylinder head alluminio completo (c/imballo) | 1 | PC |
| 214 | 5.789-070.0 | High-pressure outlet | 1 | PC |
| 106 | 5.062-718.3 | Housing waterproof | 1 | PC |
| 239 | 6.440-000.3 | Lifting drive complete | 1 | PC |
| 9001 | 4.769-034.0 | Nozzle insert only for replacement | 1 | PC |
| 248 | 6.362-151.0 | O-Ring d. 10 x 2 NBR 70 | 1 | PC |
| 101 | | Piston guidance complete | 1 | PC |
| 105 | 9.002-523.0 | Plug completo K7 (c/imballo) | 1 | PC |
| 240 | 5.333-215.0 | Pressure spring by-pass | 1 | PC |
| 244 | 7.303-048.0 | Screw M6x20 -St-R3R (In6Rd) | 2 | PC |
| 9000 | 2.885-186.0 | Spare parts set excess-current | 1 | PC |
| 901 | 4.100-834.0 | Spare parts set seals | 1 | PC |
| 9002 | 4.100-818.0 | Spare parts set sensor cpl. | 1 | PC |
| 104 | 4.584-022.0 | Valve pin complete | 1 | PC |