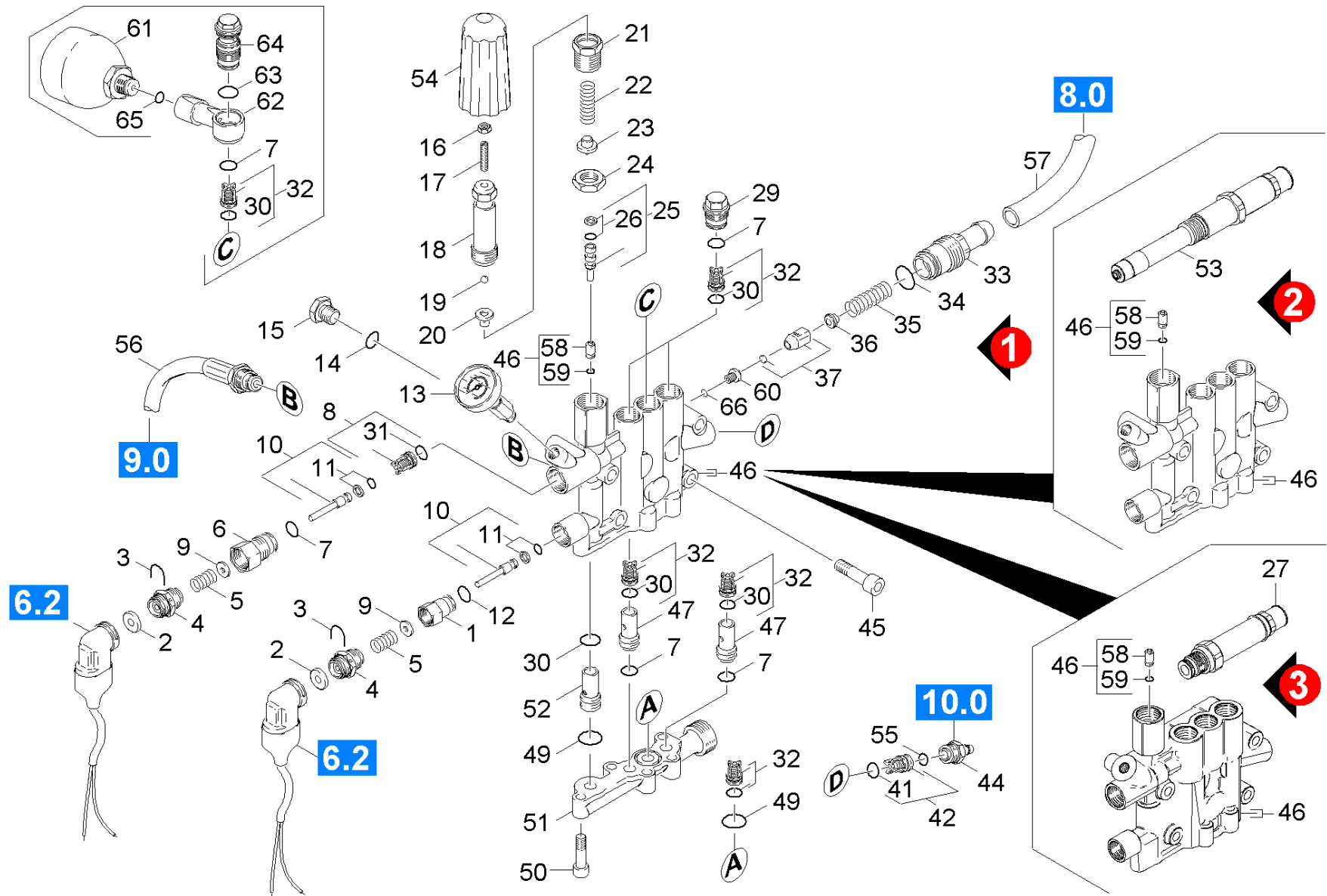


21 Cylinder head

Overview technical documents/Professional/High pressure cleaner hotwater/Electric motor/HDS 798 CSX ECO *EU (1.174-622.0)/Spare parts list HDS 798 C Eco/20 Pump set/21 Cylinder head



21 Cylinder head

Overview technical documents/Professional/High pressure cleaner hotwater/Electric motor/HDS 798 CSX ECO *EU (1.174-622.0)/Spare parts list HDS 798 C Eco/20 Pump set/21 Cylinder head

Rez.daļas/nodil.pakļ.daļas	Poz.	Materiāla Nr.	Nosaukums	Daudzums	Pārdoš. vienība	no sēr. Nr..	līdz sēr. Nr.	Daž. informācija
X-X	1	5.402-686.0	Vītņots elements	1.000	ST	0000000000	0000000000	
X-X	2	5.367-030.0	Membrāna	2.000	ST	0000000000	0000000000	
X-X	3	5.034-494.0	Retaining bracket	2.000	ST	0000000000	0000000000	
X-X	4	5.411-148.0	Vītņtapa	2.000	ST	0000000000	0000000000	
X-X	5	5.332-268.0	Spirālveida atspere	2.000	ST	0000000000	0000000000	
X-X	6	5.583-161.0	Vārsta skrūve	1.000	ST	0000000000	0000000000	
X-X	7	6.362-481.0	Gredzenblīve 14,0 x 2,0 NBR 80	6.000	ST	0000000000	0000000000	
X-X	8	4.580-262.0	Valve complete	1.000	ST	0000000000	0000000000	
X-X	9	5.115-796.0	Paplāksne	2.000	ST	0000000000	0000000000	
X-X	10	4.553-197.0	Valve	2.000	ST	0000000000	0000000000	
X-X	11	6.363-037.0	Gredzenblīve, pilns komplekts 1ST.-R.	2.000	ST	0000000000	0000000000	
X-X	12	6.362-853.0	Gredzenblīve 4,47x1,78	1.000	ST	0000000000	0000000000	
X-X	13	6.421-215.0	Manometrs 0-300 bāri	1.000	ST	0000000000	0000000000	
	14	6.362-101.0	Gredzenblīve 8 X 2	1.000	ST	0000000000	0000000000	
X-X	15	5.411-070.0	Vītņtapa	1.000	ST	0000000000	0000000000	
X-X	16	7.311-002.0	hexagon nut	1.000	ST	0000000000	0000000000	
X-X	17	7.307-017.0	threaded pin	1.000	ST	0000000000	0000000000	
X-X	18	5.304-070.0	Skrūve ar sešstūru galvu	1.000	ST	0000000000	0000000000	
X-X	19	7.401-931.0	locking ring	1.000	ST	0000000000	0000000000	
X-X	20	5.582-121.0	Vārstu plate	1.000	ST	0000000000	0000000000	
X-X	21	5.404-082.0	hollow screw	1.000	ST	0000000000	0000000000	
X-X	22	5.332-444.0	Spirālveida atspere	1.000	ST	0000000000	0000000000	
X-X	23	5.584-114.0	valve pin	1.000	ST	0000000000	0000000000	
X-X	24	5.311-204.0	Sešstūra uzgrieznis M22 x 1,5	1.000	ST	0000000000	0000000000	
X-X	25	4.553-198.0	Piston complete only for replacement	1.000	ST	0000000000	0000000000	

21 Cylinder head

Overview technical documents/Professional/High pressure cleaner hotwater/Electric motor/HDS 798 CSX ECO *EU (1.174-622.0)/Spare parts list HDS 798 C Eco/20 Pump set/21 Cylinder head

Rez.daļas/nodil.pakļ.daļas	Poz.	Materiāla Nr.	Nosaukums	Daudzums	Pārdoš. vienība	no sēr. Nr..	līdz sēr. Nr.	Daž. informācija
X-X	26	6.362-468.0	Gredzenblīve, pilns komplekts 1ST.-R.	1.000	ST	0000000000	0000000000	
	27	4.580-731.0	Safety valve	1.000	ST			VERSION 3
X-X	29	5.583-146.0	Vārsta skrūve	3.000	ST	0000000000	0000000000	
X-X	30	6.363-003.0	Gredzenblīve 13,0 X 2,0-NBR 90	6.000	ST	0000000000	0000000000	
X-X	31	6.362-381.0	Gredzenblīve 13x2 - NBR 70	1.000	ST	0000000000	0000000000	
X-X	32	2.884-512.0	Valve (3 Stueck)	1.000	ST	0000000000	0000000000	
	33	5.583-130.0	Valve screw	1.000	ST	0000000000	0000000000	VERSION 1
X-X	34	6.362-169.0	Gredzenblīve 12,0 X 2,0	1.000	ST	0000000000	0000000000	VERSION 1
X-X	35	5.332-414.0	Spirālveida atspere	1.000	ST	0000000000	0000000000	VERSION 1
X-X	36	5.584-060.0	Valve pin	1.000	ST	0000000000	0000000000	VERSION 1
X-X	37	4.582-019.0	Valve disc complete	1.000	ST	0000000000	0000000000	VERSION 1
X	41	6.362-077.0	Gredzenblīve 10 x 2,2 NBR 70	1.000	ST	0000000000	0000000000	
X-X	42	4.580-349.0	Valve complete chemistry	1.000	ST	0000000000	0000000000	
X	44	5.443-455.0	Hose stem	1.000	ST	0000000000	0000000000	
X-X	45	7.306-125.0	Cil. galvas skr. M10x70-8.8-A3E ISO4	4.000	ST	0000000000	0000000000	
	46	4.550-925.0	Cylinder head	1.000	ST			VERSION 3
X	46	4.550-458.0	Cylinder head	1.000	ST	0000000000	0000000000	VERSION 1 + VERSION 2
X-X	47	5.110-608.0	Uzmava	2.000	ST	0000000000	0000000000	
X-X	49	6.362-547.0	Gredzenblīve 20,0x1,5-NBR 70	2.000	ST	0000000000	0000000000	
X-X	50	7.306-043.0	Cil. galvas skr. M8x30 -8.8-A2E ISO	5.000	ST	0000000000	0000000000	
	51	5.587-192.0	Valve housing	1.000	ST	0000000000	0000000000	
X-X	52	5.110-800.0	Uzmava	1.000	ST	0000000000	0000000000	
	53	4.580-729.0	Safety valve kpl. Ersatz	1.000	ST			VERSION 2
X-X	54	5.321-579.0	Handle	1.000	ST	0000000000	0000000000	
X-X	55	6.362-151.0	Gredzenblīve 10 x 2 NBR 70	1.000	ST	0000000000	0000000000	

21 Cylinder head

Overview technical documents/Professional/High pressure cleaner hotwater/Electric motor/HDS 798 CSX ECO *EU (1.174-622.0)/Spare parts list HDS 798 C Eco/20 Pump set/21 Cylinder head

Rez.daļas/nodil.pakļ.daļas	Poz.	Materiāla Nr.	Nosaukums	Daudzums	Pārdoš. vienība	no sēr. Nr..	līdz sēr. Nr.	Daž. informācija
X-X	56	4.440-790.0	Hose SDS	1.000	ST	0000000000	0000000000	
	57	6.388-167.0	Hose DN15	1.000	M	0000000000	0000000000	
X-X	58	5.581-239.0	Vārsta ligzda	1.000	ST	0000000000	0000000000	
X-X	59	6.362-386.0	Gredzenblīve 5,0 x 1,5-NBR 80	1.000	ST	0000000000	0000000000	
X-X	60	5.581-231.0	Vārsta ligzda	1.000	ST	0000000000	0000000000	VERSION 1
X-X	61	6.505-054.0	Spiediena akumulators	1.000	ST	0000000000	0000000000	
Pozīcijas teksts: 1.174-610.0								
	62	5.427-304.0	Retainer pressure accumulator	1.000	ST	0000000000	0000000000	
Pozīcijas teksts: 1.174-610.0								
X-X	63	6.362-524.0	Gredzenblīve 17,0 X 1,5	1.000	ST	0000000000	0000000000	
Pozīcijas teksts: 1.174-610.0								
	64	5.404-086.0	Hollow screw	1.000	ST	0000000000	0000000000	
Pozīcijas teksts: 1.174-610.0								
X	65	6.362-176.0	Gredzenblīve 6,07x1,78	1.000	ST	0000000000	0000000000	
Pozīcijas teksts: 1.174-610.0								
X-X	66	6.362-703.0	Gredzenblīve 6,0x1,5-NBR 70	1.000	ST			VERSION 1
X-X	100	2.883-892.0	Spare part set pump HDS 798 C	1.000	ST	0000000000	0000000000	