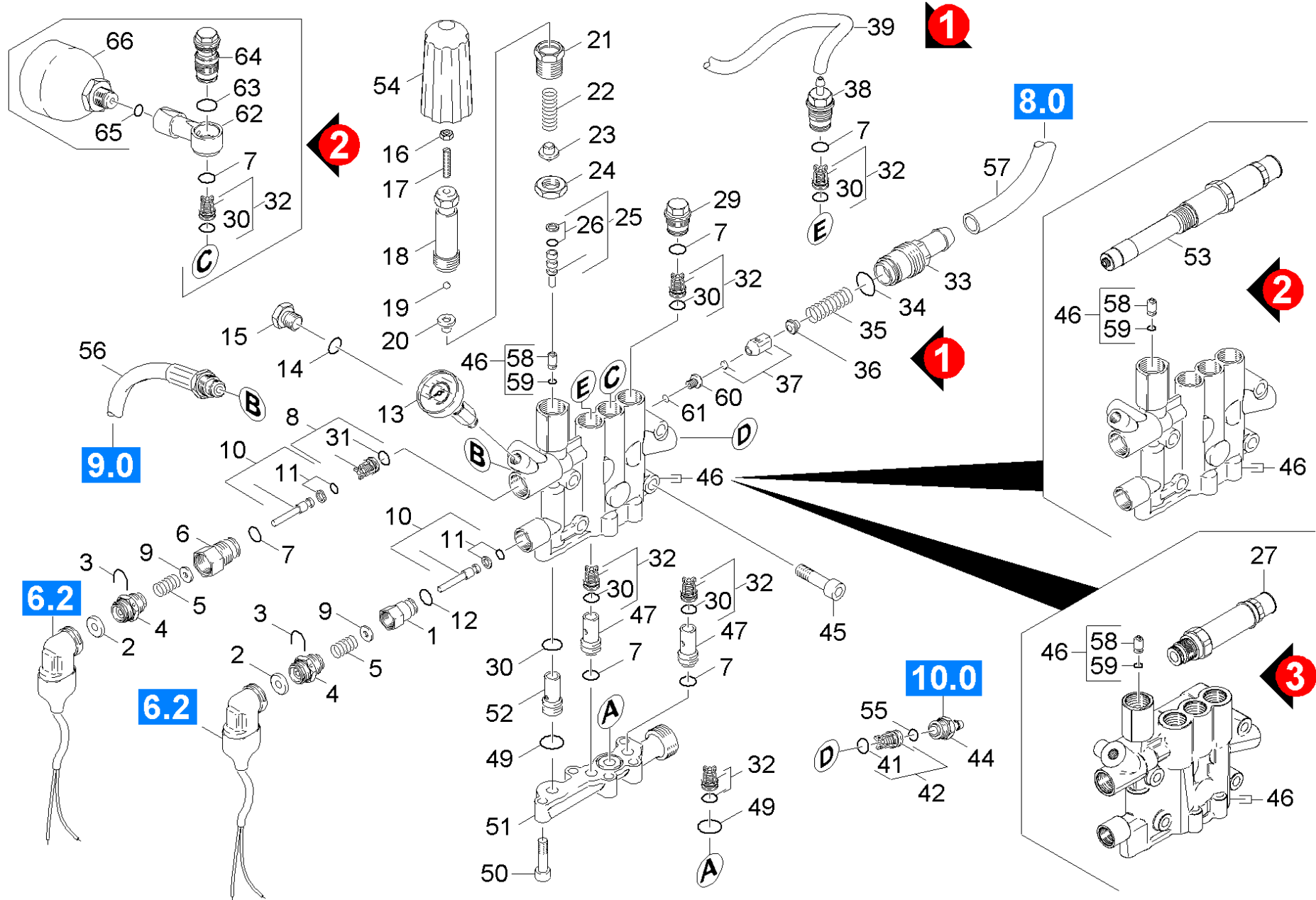


# 22 Cylinder head

Professional \ High pressure cleaner hotwater \ Electric motor \ HDS 698 C \*EU \ Spare parts list HDS 698 C \ Pump set \ Cylinder head



## 22 Cylinder head

Professional \ High pressure cleaner hotwater \ Electric motor \ HDS 698 C \*EU \ Spare parts list HDS 698 C \ Pump set \ Cylinder head



POS	Preces Nr.	Apraksts	Quantity	Unit	Piezīme	Zemsvētras piezīme
50	7.306-043.0	Cil. galvas skr. M8x30 -8.8-A2E ISO	5.000	ST		
45	7.306-106.0	Cil. galvas skr. M8x70 -8.8-A2E ISO4	4.000	ST		
46	4.550-459.0	Cylinder head	1.000	ST	VERSION 1 + VERSION 2	
46	4.550-924.0	Cylinder head only for replacement	1.000	ST	VERSION 3	
26	6.362-468.0	Gredzenblīve, pilns komplekts 1ST.-R.	1.000	ST		
11	6.363-037.0	Gredzenblīve, pilns komplekts 1ST.-R.	2.000	ST		
12	6.362-853.0	Gredzenblīve 4,47x1,78	1.000	ST		
59	6.362-386.0	Gredzenblīve 5,0 x 1,5-NBR 80	1.000	ST		
61	6.362-703.0	Gredzenblīve 6,0x1,5-NBR 70	1.000	ST		
65	6.362-176.0	Gredzenblīve 6,07x1,78	1.000	ST		VERSION2 NEW VERSION 1.173-110.0/-112.0/-116.0
14	6.362-101.0	Gredzenblīve 8 X 2	1.000	ST		
55	6.362-151.0	Gredzenblīve 10 x 2 NBR 70	1.000	ST		
41	6.362-077.0	Gredzenblīve 10 x 2,2 NBR 70	1.000	ST		
34	6.362-169.0	Gredzenblīve 12,0 X 2,0	1.000	ST		
30	6.363-003.0	Gredzenblīve 13,0 X 2,0-NBR 90	6.000	ST		
31	6.362-381.0	Gredzenblīve 13x2 - NBR 70	1.000	ST		
7	6.362-481.0	Gredzenblīve 14,0 x 2,0 NBR 80	6.000	ST		
63	6.362-524.0	Gredzenblīve 17,0 X 1,5	1.000	ST		VERSION2 NEW VERSION 1.173-110.0/-112.0/-116.0
49	6.362-547.0	Gredzenblīve 20,0x1,5-NBR 70	2.000	ST		
54	5.321-579.0	Handle	1.000	ST		
16	7.311-002.0	hexagon nut	1.000	ST		
56	6.391-596.0	High pressure hose DN 13	1.000	ST		
64	5.404-086.0	Hollow screw	1.000	ST		VERSION2 NEW VERSION 1.173-110.0/-112.0/-116.0
21	5.404-082.0	hollow screw	1.000	ST		
39	6.390-426.0	Hose DN 5	1.000	M		VERSION 1
57	6.388-167.0	Hose DN15	1.000	M		TO ORDER AS CUT GOODS
44	5.443-455.0	Hose stem	1.000	ST		
19	7.401-931.0	locking ring	1.000	ST		
13	6.421-215.0	Manometrs 0-300 bāri	1.000	ST		
2	5.367-030.0	Membrāna	2.000	ST		
38	4.580-376.3	Overflow valve -nur fuer Ersatz-	1.000	ST		VERSION 1

## 22 Cylinder head

Professional \ High pressure cleaner hotwater \ Electric motor \ HDS 698 C \*EU \ Spare parts list HDS 698 C \ Pump set \ Cylinder head



POS	Preces Nr.	Apraksts	Quantity	Unit	Piezīme	Zemsvītras piezīme
9	5.115-796.0	Paplāksne	2.000	ST		
25	4.553-198.0	Piston complete only for replacement	1.000	ST		
62	5.427-304.0	Retainer pressure accumulator	1.000	ST		VERSION2 NEW VERSION 1.173-110.0/-112.0/-116.0
3	5.034-494.0	Retaining bracket	2.000	ST		
27	4.580-731.0	Safety valve	1.000	ST	VERSION 3	
53	4.580-729.0	Safety valve kpl. Ersatz	1.000	ST	VERSION 2	
24	5.311-204.0	Sešstūra uzgrieznis M22 x 1,5	1.000	ST		
18	5.304-070.0	Skrūve ar sešstūru galvu	1.000	ST		
52	5.110-797.0	sleeve	1.000	ST		
100	2.883-891.0	Spare part set pump HDS 558 C/HDS 698 C	1.000	ST		
66	6.505-054.0	Spiediena akumulators	1.000	ST		VERSION2 NEW VERSION 1.173-110.0/-112.0/-116.0
22	5.332-444.0	Spirālveida atspere	1.000	ST		
35	5.332-414.0	Spirālveida atspere	1.000	ST		
5	5.332-268.0	Spirālveida atspere	2.000	ST		
17	7.307-009.0	Thread pin	1.000	ST		
47	5.110-608.0	Uzmava	2.000	ST		
10	4.553-197.0	Valve	2.000	ST		
32	2.884-512.0	Valve (3 Stueck)	1.000	ST		
8	4.580-262.0	Valve complete	1.000	ST		
42	4.580-349.0	Valve complete chemistry	1.000	ST		
37	4.582-019.0	Valve disc complete	1.000	ST		
51	5.587-192.0	Valve housing	1.000	ST		
36	5.584-060.0	Valve pin	1.000	ST		
23	5.584-114.0	valve pin	1.000	ST		
33	5.583-130.0	Valve screw	1.000	ST		
60	5.581-231.0	Vārsta ligzda	1.000	ST		
58	5.581-239.0	Vārsta ligzda	1.000	ST		
6	5.583-161.0	Vārsta skrūve	1.000	ST		
29	5.583-146.3	Vārsta skrūve	2.000	ST		
20	5.582-121.0	Vārstu plate	1.000	ST		
1	5.402-686.0	Vītņots elements	1.000	ST		

## 22 Cylinder head

Professional \ High pressure cleaner hotwater \ Electric motor \ HDS 698 C \*EU \ Spare parts list HDS 698 C \ Pump set \ Cylinder head



POS	Preces Nr.	Apraksts	Quantity	Unit	Piezīme	Zemsvītras piezīme
4	5.411-148.0	Vītņtapa	2.000	ST		
15	5.411-070.0	Vītņtapa	1.000	ST		