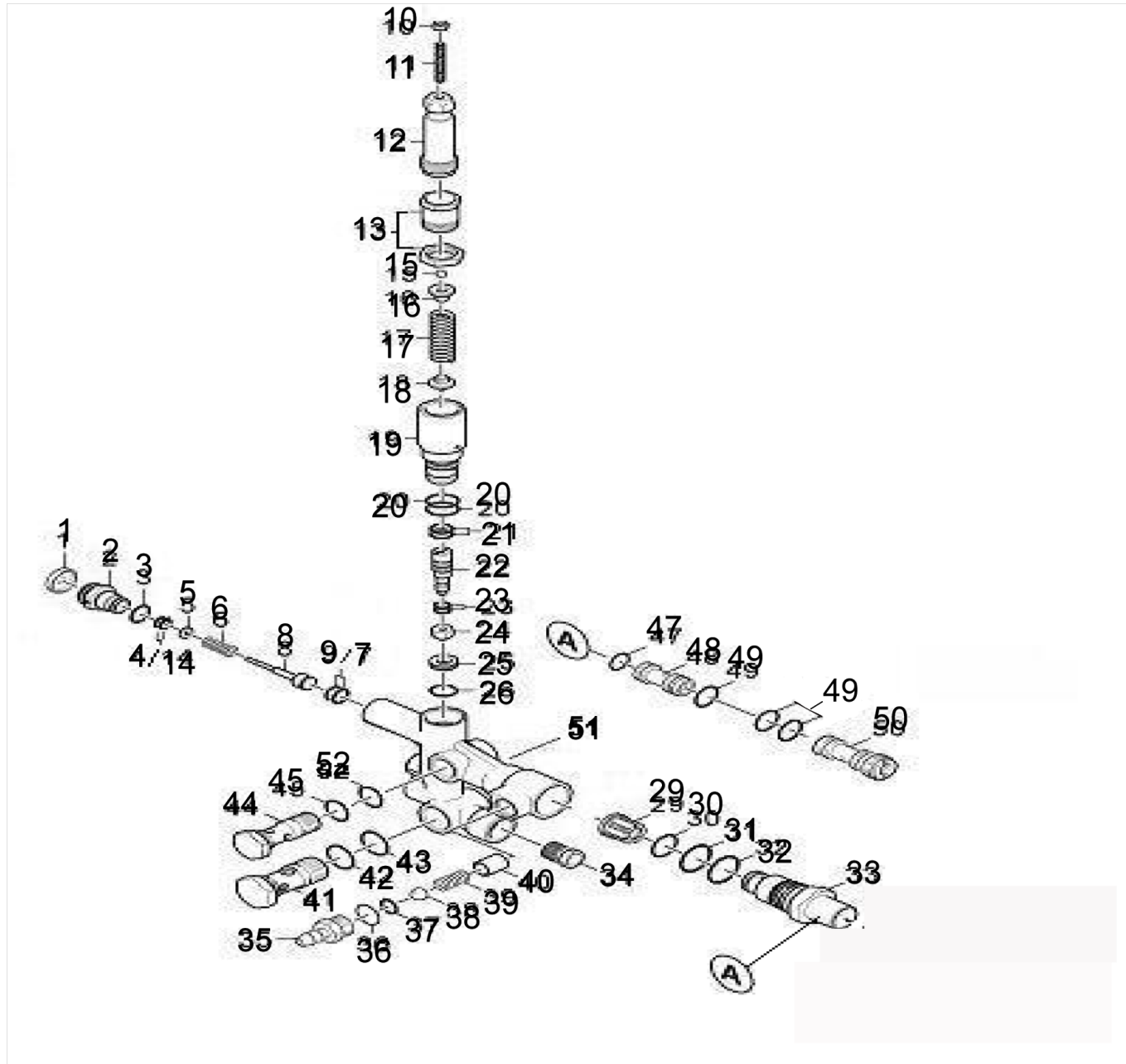


50 Valve controller

Professional \ High pressure cleaner hotwater \ Electric motor \ HDS 7/16-E CAGE 380V - 60HZ \ Valve controller



50 Valve controller

Professional \ High pressure cleaner hotwater \ Electric motor \ HDS 7/16-E CAGE 380V - 60HZ \ Valve controller



POS	Article no.	Description	Quantity	Unit
*	9.310-275.0	MULTI FUNCIONAL CONTROL VALVE	1	PC
1	5.367-003.0	Diaphragm	1	PC
2	5.411-162.0	Screw plug	1	PC
3	6.363-615.0	O-Ring seal 11 x 1,5 -NBR70	1	PC
4	5.114-513.0	Supportring	1	PC
5	5.115-999.0	Washer	1	PC
6	5.332-511.0	Helical spring	1	PC
8	5.553-571.0	Control piston	1	PC
9	6.363-611.0	O-Ring seal 8,73 x 1,78 -NBR	1	PC
10	7.311-002.0	Hexagon nut M5 -6-A2E ISO 4032	1	PC
11	7.307-017.0	Threaded pin M5x40 -St-45H-A2E ISO 4026	1	PC
12	5.304-070.0	Hexagonal head screw	1	PC
13	5.404-082.0	Hollow screw	1	PC
14	6.363-241.0	O-Ring seal 2,90x1,78	1	PC
15	7.401-921.0	Sphere 4 G20 -1.4034 DIN 5401	1	PC
16	5.582-121.0	Valve disc	1	PC
17	5.332-511.0	Helical spring	1	PC
18	5.584-114.0	Valve pin	1	PC
19	5.402-698.0	Screw union	1	PC
20	6.362-598.0	O-Ring seal 13,94X 2,62	1	PC
21	6.362-953.3	O-Ring seal complete for replacement	1	PC
22	5.553-489.0	Piston excess-current	1	PC
23	6.363-037.0	O-Ring seal complete 1ST.-R.	1	PC
24	5.584-135.0	Valve disc	1	PC
25	5.581-302.0	Valve seat HD D10	1	PC
26	6.362-381.0	O-Ring seal 13x2 - NBR 70	1	PC
29	4.580-594.0	Valve complete	1	PC
30	6.362-395.0	O-Ring seal 14,0 X 1,78-NBR 70	1	PC
31	6.362-833.0	O-Ring seal 21,5 x 1,78	1	PC
32	6.362-550.0	O-Ring seal 21,89X 2,62-NBR 70	1	PC
33	5.402-701.0	Screw union	1	PC
34	6.414-252.0	Strainer	1	PC
35	5.402-712.0	Screw nipple	1	PC

50 Valve controller

Professional \ High pressure cleaner hotwater \ Electric motor \ HDS 7/16-E CAGE 380V - 60HZ \ Valve controller

KÄRCHER

POS	Article no.	Description	Quantity	Unit
36	6.362-533.0	O-Ring seal 14,0 X 1,5-NBR 70	1	PC
37	6.362-113.0	O-Ring seal 6,0 x 2,0 NBR 70	1	PC
38	7.401-908.0	Sphere 7 G300 -1.4301 DIN 5401	1	PC
39	5.332-124.0	Helical spring	1	PC
40	5.028-692.0	Tube	1	PC
41	5.304-087.0	Hollow screw	1	PC
42	6.362-989.0	O-Ring seal 18x2 - NBR 80	1	PC
43	6.362-496.0	O-Ring seal 17,12X 2,62-NBR 70	1	PC
44	9.369-628.0	HOLLOW SCREW g3/8	1	PC
45	6.362-381.0	O-Ring seal 13x2 - NBR 70	1	PC
47	6.362-388.0	O-Ring seal 8,0x1,5 -EPDM 70	1	PC
48	5.769-143.0	Nozzle insert	1	PC
49	6.362-384.0	O-Ring seal 9x1,5 - NBR 70	1	PC
50	5.769-141.3	Nozzle insert for replacement	1	PC
52	9.376-041.0	O-Ring seal 13,94 X 2,62 NBR 90	1	PC