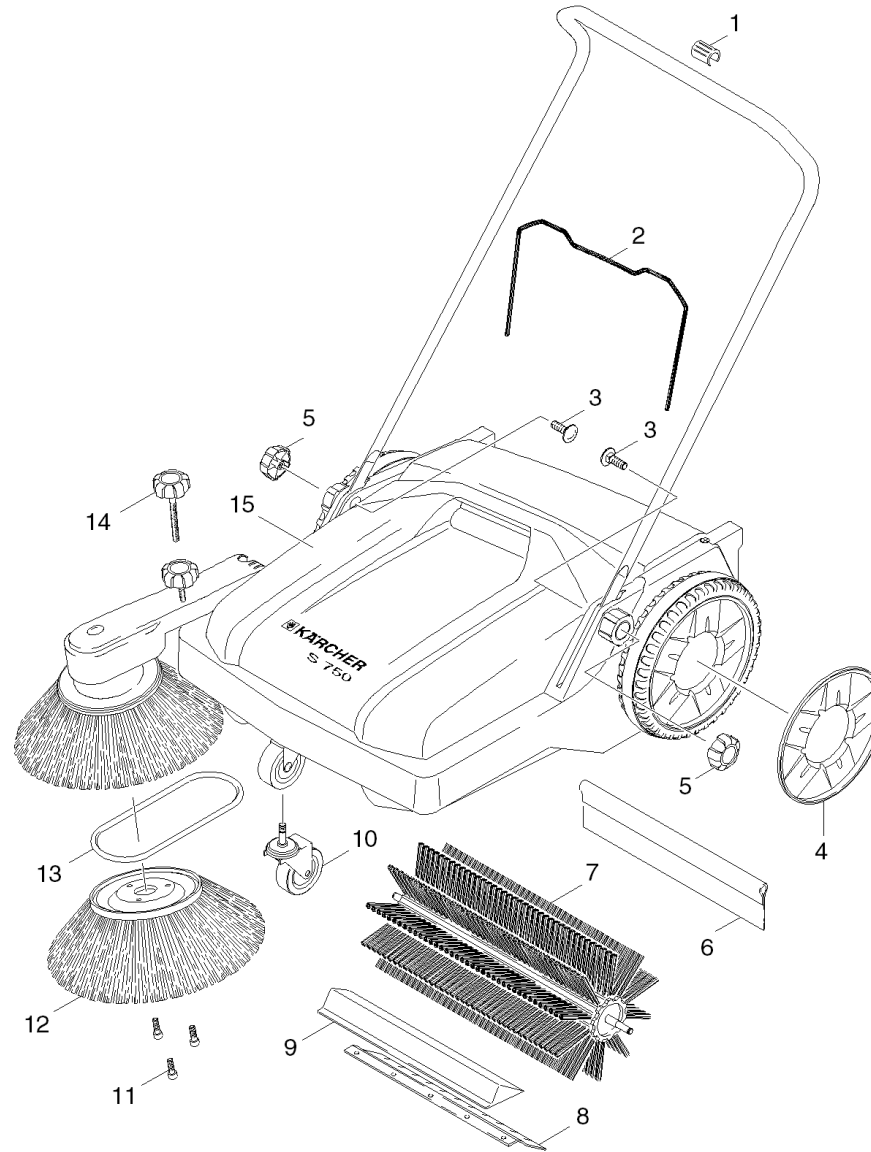


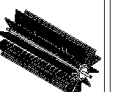
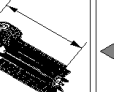
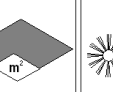
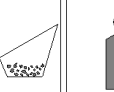



# Short spare parts list (1.766-910.3)

Home and Garden \ Sweepers \ Manually operated \ S 750 \*EU \ Short spare parts list



 1280x 770x 1000 mm	 360x 770x 1600 mm	 480 mm	 700 mm	 2500 m <sup>2</sup> /h	 32 l	 13 kg
---	--	--	---	---	---	--

## Short spare parts list (1.766-910.3)

Home and Garden \ Sweepers \ Manually operated \ S 750 \*EU \ Short spare parts list

**KÄRCHER**

POS	Article no.	Description	Quantity	Unit
1	6.373-921.0	Clamp tube protection	1.000	ST
2	5.364-164.0	Seal rubber	1.000	ST
3	7.303-186.0	Saucer-head screw M8x40 -St-A0P DIN 603	2.000	ST
4	5.515-285.0	Wheel cap S 750	1.000	ST
5	5.321-800.0	Handle	2.000	ST
6	6.966-028.0	Rear skirting	1.000	ST
7	6.966-021.0	Reversing rolling mill complete	1.000	ST
8	6.966-030.0	Ground lip	1.000	ST
9	5.043-046.0	Holder for rubberlip	1.000	ST
10	6.966-043.0	Castor	1.000	ST
11	7.303-112.0	Screw 6x20 -10.9-R2R (In6Rd)	1.000	ST
12	6.966-005.0	Side broom	1.000	ST
13	6.348-434.0	Round belt yellow	1.000	ST
14	4.321-195.0	Handle completely	1.000	ST
15	4.070-599.0	Sweep tank complete S 750	1.000	ST