



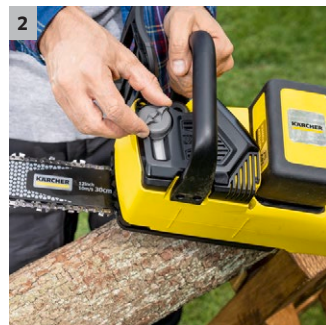
## CNS 18-30 Battery

Simple to use, versatile and perfect for tree maintenance: the lightweight CNS 18-30 Battery chain saw with tool-less chain tensioning system.



### 1 Tool-less chain tensioning

- The chain is simply tensioned using a knob.



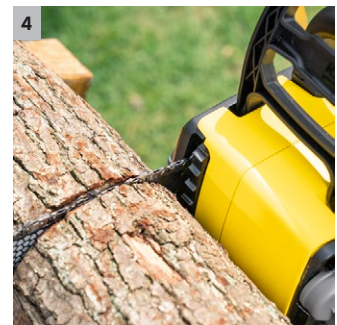
### 2 Automatic chain lubrication

- For low-maintenance use of the battery chain saw.



### 3 Kickback protection

- The chain stops immediately - for maximum safety in the event of a recoil effect.



### 4 Bumper spikes

- Safe guiding and precise cuts because the chain saw attaches to the material that is to be cut.



## CNS 18-30 Battery

- Ideal for tree maintenance where the branches are thin
- User-friendly settings and operation
- Chain brake and safety unlocking for safe use

### Technical data

<b>Order no.</b>	1.444-001.0	
<b>EAN code</b>	4054278548937	
<b>Guide rail</b>	<b>cm</b>	30
<b>Chain speed</b>	<b>m/s</b>	10
<b>Chain pitch</b>	3/8" LP	
<b>Chain gauge</b>	1.1 mm / 0.043"	
<b>Number of drive links</b>	45	
<b>Oil tank capacity</b>	<b>ml</b>	200
<b>Guaranteed sound power level</b>	<b>dB(A)</b>	101
<b>Vibration value of front handle (<math>\Delta K=1.5 \text{ m/s}^2</math>)</b>	<b>m/s<sup>2</sup></b>	3.5
<b>Vibration values for rear handle (<math>\Delta K=1.5 \text{ m/s}^2</math>)</b>	<b>m/s<sup>2</sup></b>	5.2
<b>Motor type</b>	Brushless motor	
<b>Battery platform</b>	18 V battery platform	
<b>Voltage</b>	<b>V</b>	18
<b>Performance per battery charge *</b>	<b>cuts</b>	max. 35 (2,5 Ah) / max. 70 (5,0 Ah)
<b>Runtime per battery charging</b>	<b>min</b>	max. 10 (2,5 Ah) / max. 20 (5,0 Ah)
<b>Weight</b>	<b>kg</b>	3.2
<b>Dimensions (L x W x H)</b>	<b>mm</b>	690 x 230 x 245

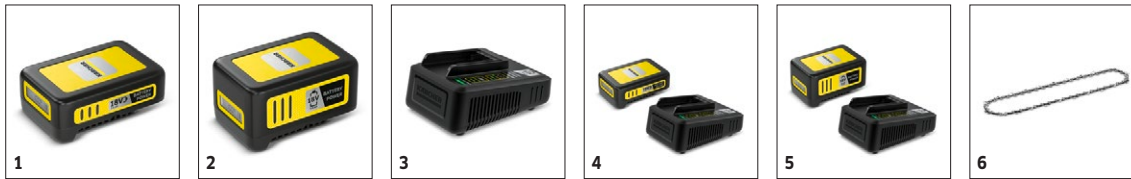
### Equipment

<b>Guide rail</b>	■
<b>Saw chain</b>	■
<b>Oil bottle</b>	■
<b>chain protection</b>	■
<b>Tool-less chain tensioning</b>	■
<b>Automatic chain lubrication</b>	■
<b>Chain brake</b>	■
<b>Oil level indicator</b>	■

■ Included in the scope of supply. \*  $\varnothing$  branches: 10 cm

# CNS 18-30 BATTERY

## 1.444-001.0



		Order no.					Price	Description	
<b>Batteries</b>									
Battery Power 18/25	1	2.445-034.0						18 V / 2.5 Ah Kärcher Battery Power exchangeable battery with innovative Real Time Technology incl. LCD display to indicate battery level. Suitable for use in all devices on the 18 V Kärcher battery platform.	<input type="checkbox"/>
Battery Power 18/50	2	2.445-035.0						18 V / 5.0 Ah Kärcher Battery Power exchangeable battery with innovative Real Time Technology incl. LCD display to indicate battery level. Suitable for use in all devices on the 18 V Kärcher battery platform.	<input type="checkbox"/>
<b>Battery chargers</b>									
Fast Charger Battery Power 18 V	3	2.445-032.0						The fast charger charges the 18 V/2.5 Ah Kärcher Battery Power exchangeable battery to 80% in just 44 minutes and can be used for all batteries on the 18 V Kärcher battery platform.	<input type="checkbox"/>
<b>Starterkit Batteries and Battery chargers</b>									
Starter kit Battery Power 18/25	4	2.445-062.0						Battery Power 18/25 Starter Kit incl. 18 V/2.5 Ah Battery Power exchangeable battery with innovative Real Time Technology and 18 V fast charger. For all devices on the 18 V Kärcher battery platform.	<input type="checkbox"/>
Starter kit Battery Power 18/50	5	2.445-063.0						Incl. 18 V / 5.0 Ah Kärcher Battery Power exchangeable battery and 18 V fast charger: The Battery Power 18/50 Starter Kit for use in all devices on the Kärcher 18 V battery platform.	<input type="checkbox"/>
<b>Chainsaw</b>									
CNS 18-30 Battery chain	6	2.444-019.0						Achieve highest quality cuts every time with the CNS 18-30 Battery chainsaw's chain on its 30 cm long bar. Replacement is effortless thanks to the tool-less chain tensioning system.	<input type="checkbox"/>

Available accessories.

# CNS 18-30 BATTERY

## 1.444-001.0



		Order no.					Price	Description	
<b>Machine accessories</b>									
Bio saw chain oil	1	6.990-531.0						Biodegradable saw chain oil reduces the wear of hinges and links on the saw chain of the battery-powered chainsaw. Can be used at ambient temperatures of -30 °C.	<input type="checkbox"/>

Available accessories.