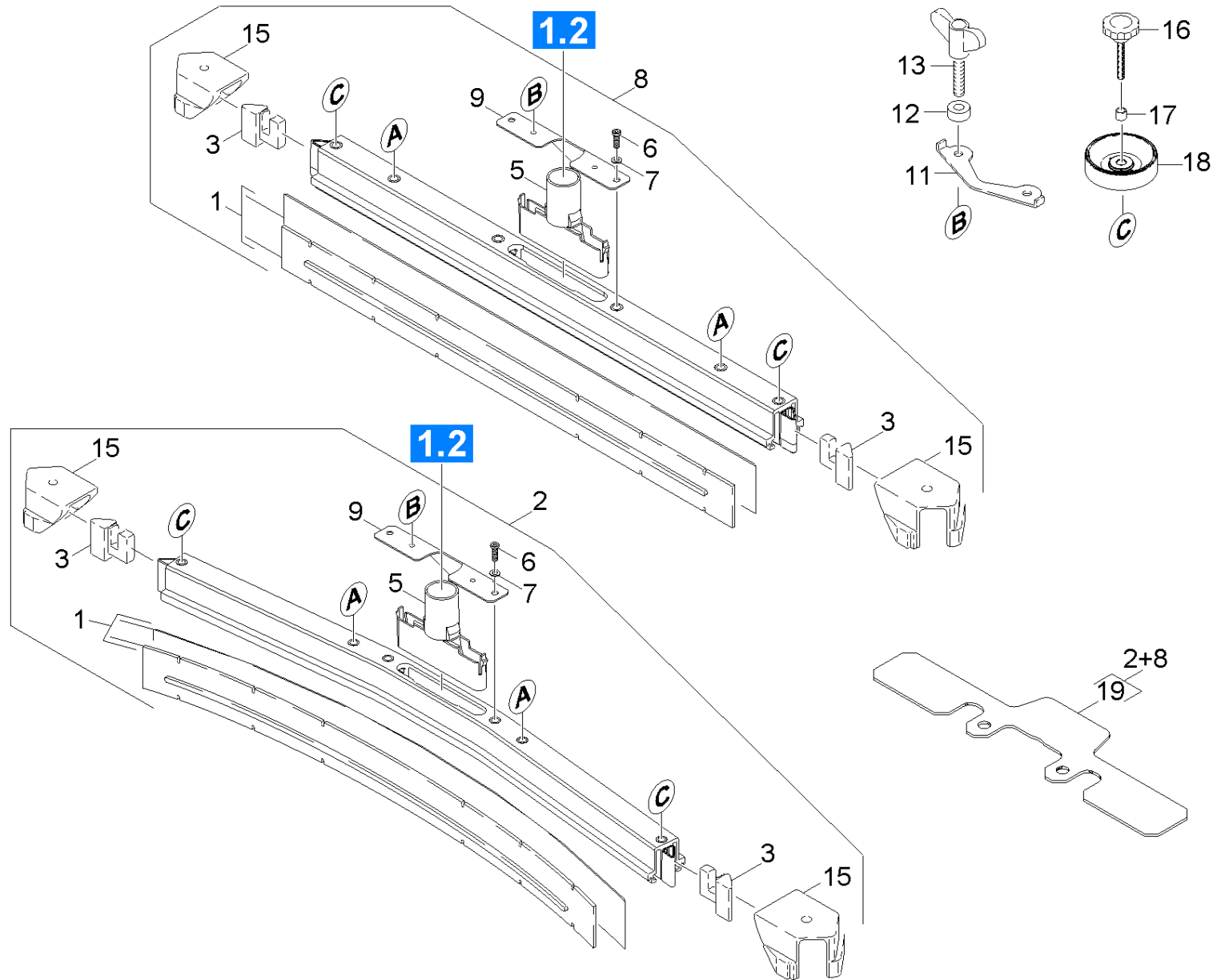


## 72 Suction bar

Overview technical documents/Professional/Floor cleaner/Walk behind/BD 55/40 C Bp Pack DOSE\*EU (1.533-163.0)/Spare parts list BR/BD 45-55 / 40/70 Suction bar/72 Suction bar



## 72 Suction bar

Overview technical documents/Professional/Floor cleaner/Walk behind/BD 55/40 C Bp Pack DOSE\*EU (1.533-163.0)/Spare parts list BR/BD 45-55 / 40/70 Suction bar/72 Suction bar

| Rez.daļas/nodil.pakļ.daļas | Poz. | Materiāla Nr. | Nosaukums                               | Daudzums | Pārdoš. vienība | no sēr. Nr.. | līdz sēr. Nr. | Daž. informācija |
|----------------------------|------|---------------|---|----------|-----------------|--------------|---------------|------------------|
| X-X                        | 1    | 6.273-207.0   | Gumijas latai - eļļizturīgas, 890mm     | 1.000    | ZSA             | 0000000000   | 0000000000    |                  |
| X-X                        | 1    | 6.273-229.0   | Gumijas latai - eļļizturīgas            | 1.000    | ST              |              |               |                  |
| X-X                        | 1    | 6.273-290.0   | BLADES FOR TEXTURED FLOORS              | 1.000    | ST              |              |               |                  |
| X-X                        | 1    | 6.273-213.0   | Gumijas mēlišu komplekts, standarta     | 1.000    | ZSA             |              |               |                  |
| X-X                        | 2    | 4.777-316.0   | Suction bar curved 850 AB oLR           | 1.000    | ST              | 0000000000   | 0000000000    |                  |
| X-X                        | 2    | 4.777-416.0   | Tank                                    | 1.000    | ST              |              |               |                  |
| X-X                        | 3    | 2.885-326.0   | End piece left / right spare parts set  | 1.000    | ST              | 0000000000   | 0000000000    |                  |
| X-X                        | 5    | 5.033-601.0   | Suction nipple                          | 1.000    | ST              | 0000000000   | 0000000000    |                  |
| X-X                        | 6    | 7.306-142.0   | Cylinder head screw M 8x25-A4-70 ISO 47 | 2.000    | ST              |              |               |                  |
| X-X                        | 7    | 7.312-017.0   | wascher                                 | 2.000    | ST              |              |               |                  |
| X-X                        | 8    | 4.777-306.0   | Suction bar straight 850 AB oLR         | 1.000    | ST              | 0000000000   | 0000000000    |                  |
| X-X                        | 8    | 4.777-406.0   | suction bar                             | 1.000    | ST              |              |               |                  |
| X-X                        | 9    | 5.100-559.0   | Suction bar support plate               | 1.000    | ST              |              |               |                  |
| X-X                        | 11   | 5.007-217.0   | Baffle plate                            | 1.000    | ST              | 0000000000   | 0000000000    |                  |
| X-X                        | 12   | 5.112-810.0   | Sleeve                                  | 2.000    | ST              |              |               |                  |
| X-X                        | 13   | 5.305-296.0   | Spārnu skrūve M8 x 40 VA                | 2.000    | ST              |              |               |                  |
| X-X                        | 15   | 2.885-294.0   | End piece left/right part               | 1.000    | ST              | 0000000000   | 0000000000    |                  |
| X-X                        | 16   | 6.321-239.0   | Sēņveida rokturis A Ø 50x43             | 2.000    | ST              |              |               |                  |
| X-X                        | 17   | 5.094-231.0   | Uzmava iesūkšanas latai                 | 2.000    | ST              |              |               |                  |
| X-X                        | 18   | 5.515-267.0   | ies. rullītis iesūkšanas latai          | 2.000    | ST              |              |               | D = 100mmm       |
| X-X                        | 18   | 5.515-346.0   | ies. rullītis iesūkšanas latai D120     | 2.000    | ST              |              |               | D = 120mmm       |
|                            | 19   | 5.128-339.0   | Additional weight suction bar           | 1.000    | ST              |              |               |                  |