

Ersatzteilliste
Spare Parts List
Liste des pièces de rechange

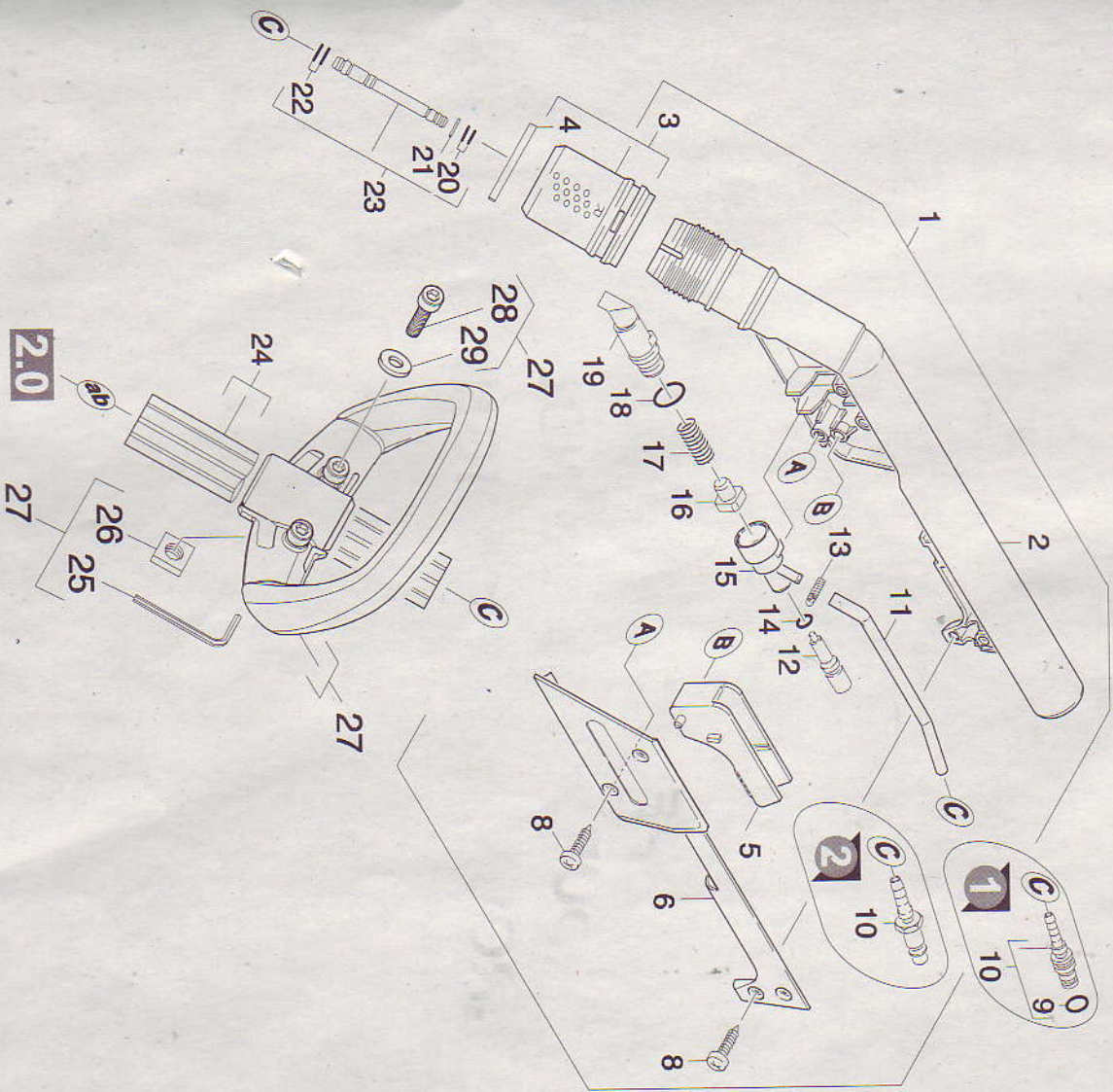
DUESE M.VERPACK

4.130-127.0 DUESE KPL.

4.130-128.0 DUESE FUER TREPPEN

4.130-152.0 BODENDUESE VERPACKT

GRUPPE: 1.0 HANDGRIFF
GROUP: 1.0 HANDLE
GROUPE: 1.0 POIGNEE



2.0

2.0

GRUPPE: 1.0 HANDGRIFF
 GROUP: 1.0 HANDLE
 GROUPE: 1.0 POIGNEE

C1

DUESE M. VERPACK

| POS. ITM. DESCRIPTION POS. | BENENNUNG DESCRIPTION DESIGNATION | TEILE-NR. PART-NO. NO. PIECE | STCK QTY. NBR. |
|-------------------------------------|---|------------------------------------|----------------------|
| 1 | GRIF KOMPL. / HANDLE / POIGNEE / 4.130-127.0 / -128.0 | 4.321-101.0 | 1 |
| 1 | GRIF KPL.METALL / HANDLE / POIGNEE / 4.130-152.0 | 4.321-119.0 | 1 |
| 2 | GRIF / HANDLE / POIGNEE | 5.321-569.0 | 1 |
| 3 | MUTTER RECHTSGEWIN. / NUT / ECROU | 4.310-010.0 | 1 |
| 4 | SICHERUNGSRING / SPRING CLIP / CIRCLIP | 5.343-014.0 | 1 |
| 5 | HEBEL / LEVER / LEVIER | 5.481-157.0 | 1 |
| 6 | FORMTEIL / MOULDED PART / PREFORME | 5.031-038.0 | 1 |
| 8 | LINSENSCHR. 4,0X 12 / OVAL HEAD SCREW / VIS A TETE BOMBEE | 6.303-059.0 | 4 |
| 9 | O-RING 6,75X 1,78 / GASKET / BAQUE DETANCHEITE | 6.362-498.0 | 1 |
| 10 | SCHLAUCHNIPPEL / HOSE STEM / RACCORD DE FLEXIBLE VERS. 1 / 4.130-127.0 / -128.0 | 4.443-019.0 | 1 |
| 10 | SCHLAUCHNIPPEL / HOSE STEM / RACCORD DE FLEXIBLE VERS. 2 / 4.130-152.0 | 5.443-463.0 | 1 |
| 11 | SCHLAUCH PU DN 6X1 / HOSE / TUYAU FLEXIBLE ALS METERWARE BESTELLENTO ORDER AS CUT GOODS/COMMANDE COMME MARCHANDISE AU METRE | 6.390-237.0 | 1 |
| 12 | VENTILBOLZEN / VALVE PIN / BOLON DE SOUPAPE | 5.584-033.0 | 1 |
| 13 | SCHLAUGHSCHELLE / HOSE BAND CLIP / COLLIER DE SERRAGE | 6.390-257.0 | 2 |
| 14 | O-RING 3,1 X 1,6 / GASKET / BAQUE DETANCHEITE | 6.362-401.0 | 1 |
| 15 | VENTILGEHAUSE / VALVE HOUSING / CORPS DE SOUPAPE | 5.587-139.0 | 1 |
| 16 | VENTILBOLZEN / VALVE PIN / BOLON DE SOUPAPE | 5.584-034.0 | 1 |
| 17 | SCHRAUBENFEDER / HELICAL SPRING / RESSORT CYLINDRIQUE | 5.332-082.0 | 1 |
| 18 | O-RING 11,0 X 1,3 / GASKET / BAQUE DETANCHEITE | 6.362-402.0 | 1 |
| 19 | FORMTEIL / MOULDED PART / PREFORME | 5.030-670.0 | 1 |
| 20 | O-RING 4,0 X 1,2 / GASKET / BAQUE DETANCHEITE | 6.362-761.0 | 2 |
| 21 | S-SCHEIBE 6 / LOCK WASHER / RONDELLE D'ARRET | 7.343-201.0 | 1 |
| 22 | O-RING 6,0 X 1,0 / GASKET / BAQUE DETANCHEITE | 6.362-472.0 | 2 |
| 23 | VERLAENGERUNG / EXTENSION / RALLONGE | 4.127-009.0 | 1 |
| 24 | SAUGROHR AL / SUCTION TUBE / TUYAU D'ASPIRATION / 4.130-127.0 / -152.0 | 5.029-257.0 | 1 |
| 24 | SAUGROHR / SUCTION TUBE / TUYAU D'ASPIRATION / 4.130-128.0 | 5.029-283.0 | 1 |
| 25 | SCHRAUBENDREHER / SCREW DRIVER / TOURNEVIS 4-kant 4.130-127.0 | 7.815-131.0 | 1 |
| 26 | MUTTER M6 / NUT / ECROU 4.130-127.0 | 7.311-571.0 | 2 |
| 27 | HANDGRIFF / HANDLE / POIGNEE 4.130-127.0 | 4.321-186.0 | 1 |
| 28 | ZYL.-SCHRAUBE M6x30 / CHESS HEAD SCREW / VIS M6x30 4.130-127.0 | 7.306-024.0 | 2 |
| 29 | SCHIEBE 6 / LOCK WASHER / RONDELLE D'ARRET 4.130-127.0 | 7.312-292.0 | 2 |

"=> xxxxxx" = bis Werknummer / up to serial No. / jusqu' au No. de fabr. / "xxxxxx =>" = ab Werknummer / from serial No. / a partir du No. de fabr. /

550083

01964630

59582120

GRUPPE: 2.0 BODENDUESE
GROUP: 2.0 FLOOR TOOL
GROUPE: 2.0 SUCEUR

A2

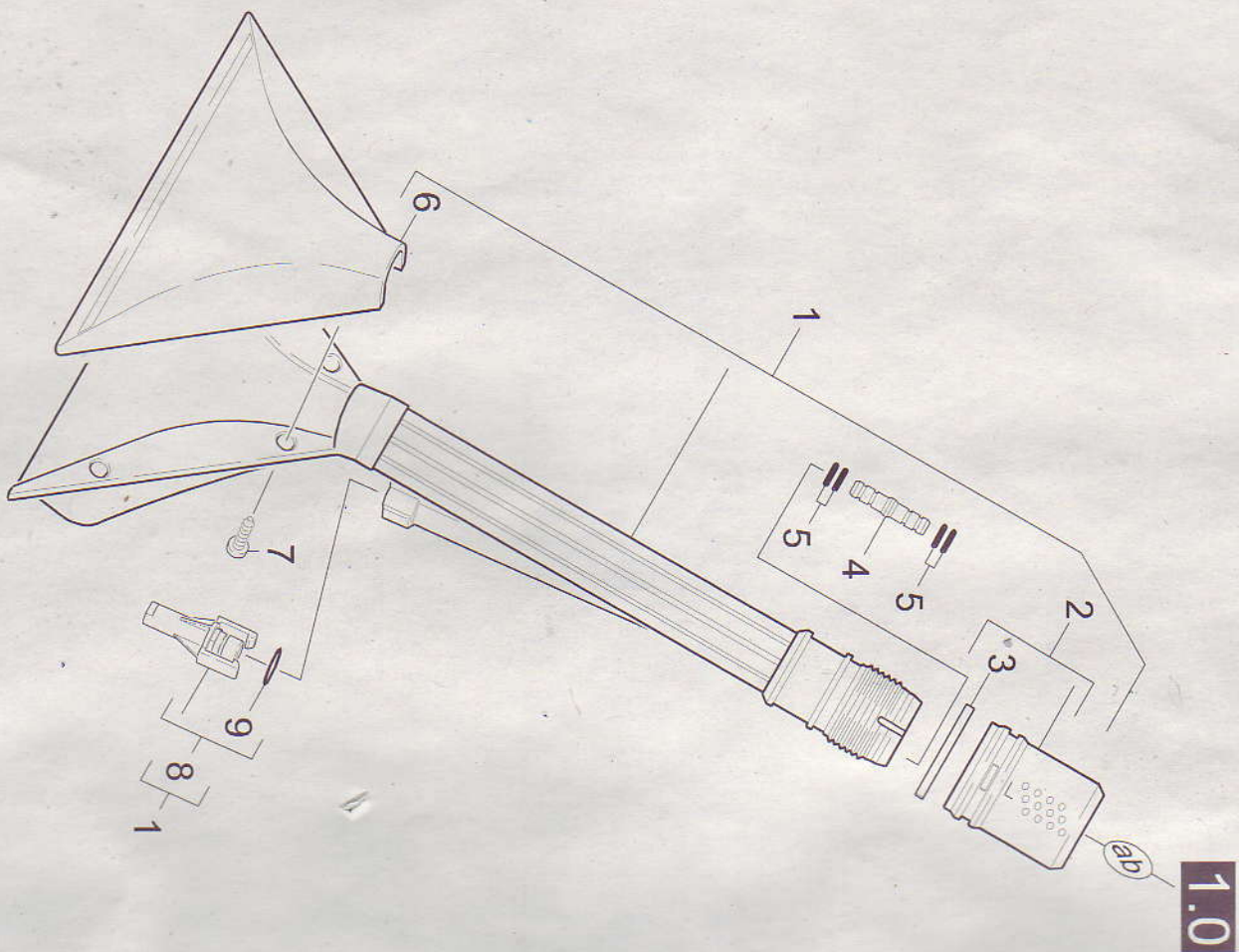
DUESE M.VERPACK

GRUPPE: 2.0 BODENDUESE
GROUP: 2.0 FLOOR TOOL
GROUPE: 2.0 SUCEUR

GRUPPE: 2.0 BODENDUESE
GRUPP.: 2.0 FLOOR TOOL
GRUPPE: 2.0 SUCEUR

B2

DUESE M.VERPACK



Symbolbeschreibung siehe M16 / symbol description see M16 / désignation de système voir M16 /

550084

01964640

59582120

GRUPPE: 2.0 BODENDUESE
 GROUP: 2.0 FLOOR TOOL
 GRUPE: 2.0 SUCEUR

C2

DUESE M.VERPACK

| POS. ITM. POS. | BENNENNUNG DESCRIPTION DESIGNATION | TEILE-NR. PART-NO. NO.PIECE | STOCK QTY. NBR. |
|----------------------|--|-----------------------------------|-----------------------|
| 1 | TEPPICHBODENDUESE / CARPET NOZZLE / BUSE A TAPIS | 4.130-124.0 | 1 |
| 2 | MUTTER LINKSGEWIND. / NUT / ECGROU | 4.310-011.0 | 1 |
| 3 | SICHERUNGSRING / SPRING CLIP / CIRCLIP | 5.343-014.0 | 1 |
| 4 | VERLAENGERUNG / EXTENSION / RALLONGE | 5.127-021.0 | 1 |
| 5 | O-RING 6.0 X 1.0 / GASKET / BAQUE DETANCHEITE | 6.362-472.0 | 4 |
| 6 | SAUGDUESE (DECKEL) / SUCTION NOZZLE / SUCEUR | 5.777-027.0 | 1 |
| 7 | LINSENSCHR. 4.0X 12 / OVAL HEAD SCREW / VIS A TETE BOMBEE | 6.303-059.0 | 4 |
| 8 | SPRITZDUESE (GELB) / SPRAY NOZZLE / GICLEUR GELB 2.0L/MIN (SIEHE TYPENSCHILD)/YELLOW 2.0L/MIN (SEE RATING PLATE)/JAUNE 2.0L/MIN (VOIR PLAQUE SIGNALETIQUE) | 5.765-079.0 | 1 |
| 8 | SPRITZDUESE (SCHW.) / SPRAY NOZZLE / GICLEUR SCHWARZ 1.0L/MIN (SIEHE TYPENSCHILD)/BLACK 1.0L/MIN (SEE RATING PLATE)/NOIR 1.0L/MIN (VOIR PLAQUE SIGNALETIQUE) | 5.765-080.0 | 1 |
| 9 | O-RING 9.0 X 1.5 / GASKET / BAQUE DETANCHEITE | 6.362-384.0 | 1 |

550084

"=> xxxxxx" = bis Werknummer / up to serial No. / jusqu' au No. de fabr. / "xxxxxx =>" = ab Werknummer / from serial No. / a partir du No. de fabr. /

01964640

59582120