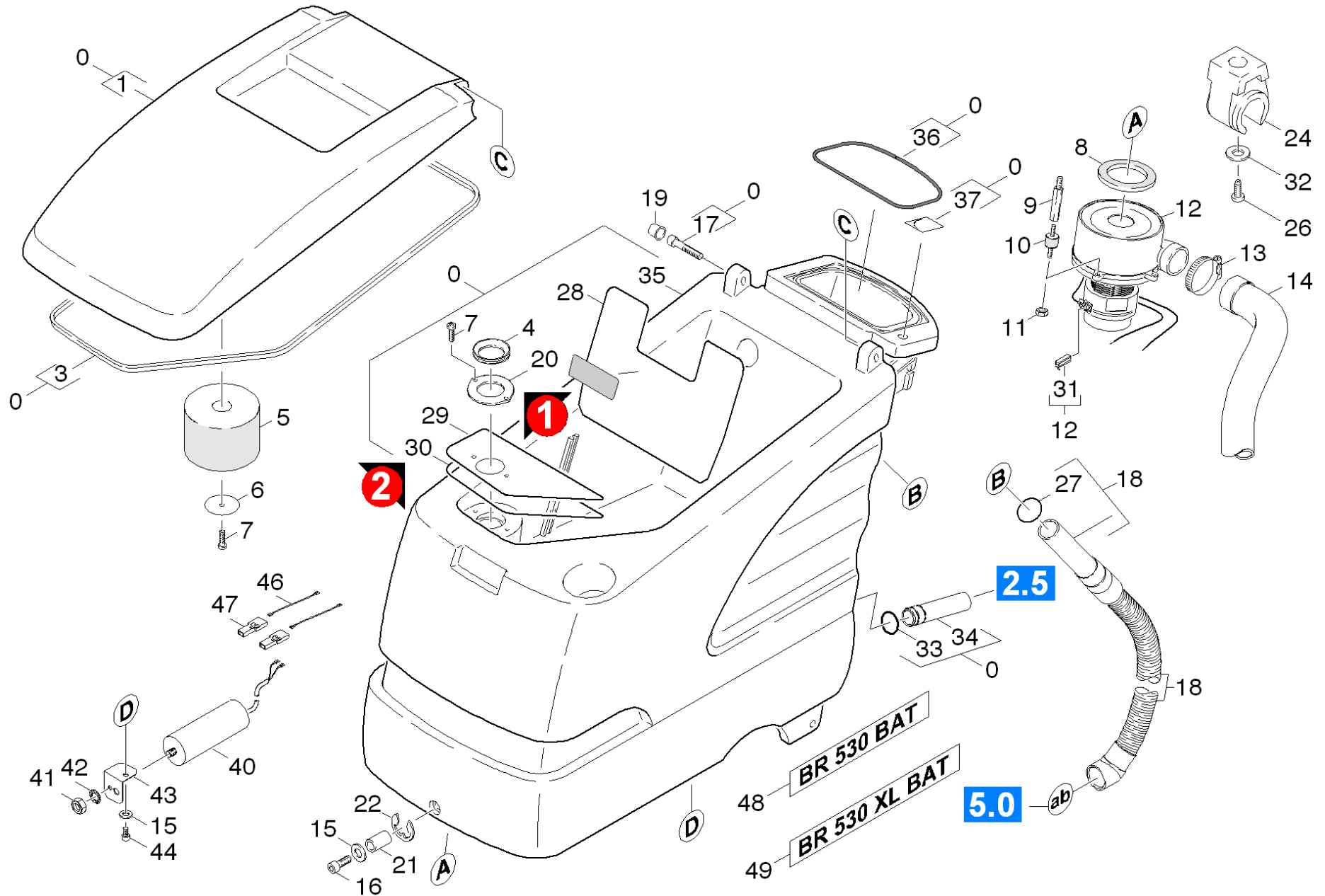


# 10 Cover and motor

Professional \ Floor cleaner \ Walk behind \ BR 530 XL \*EU \ Spare parts list BR 530 Netz \ Cover and motor



# 10 Cover and motor

Professional \ Floor cleaner \ Walk behind \ BR 530 XL \*EU \ Spare parts list BR 530 Netz \ Cover and motor



| POS | Article no.   | Description                                  | Quantity | Unit | valid from | Remark | Foot note text |
|-----|---|--|----------|------|------------|--------|----------------|
| 43  | 5.017-709.0   | Angle  | 1        | PC   |            |        |                |
|     | <b>Item text1:</b> / 1.127-683.0                            |  |          |      |            |        |                |
| 46  | 4.822-227.0   | Cable black 1,5mm²x100mm                     | 2        | PC   |            |        |                |
|     | <b>Item text1:</b> / 1.127-683.0                            |  |          |      |            |        |                |
| 25  | 6.647-081.0   | Cable tape                                   | 1        | PC   |            |        |                |
| 13  | 6.641-474.0   | Cable tape 8-210                             | 1        | PC   |            |        |                |
| 40  | 6.661-236.0   | Capacitor 100µF                              | 1        | PC   |            |        |                |
|     | <b>Item text1:</b> / 1.127-683.0                            |  |          |      |            |        |                |
| 31  | 6.610-221.0   | Carbon brush set                             | 1        | PC   |            |        |                |
| 36  | 6.273-145.0   | Cord cellular rubber                         | 1        | ZST  |            |        |                |
| 1   | 5.063-766.0   | Cover  | 1        | PC   |            |        |                |
| 26  | 7.306-031.0   | Cylinder head screw M 6x16<br>A2-70 DIN 7984 | 1        | PC   |            |        |                |
| 44  | 7.306-119.0   | Cylinder head screw M8x12<br>-A2-70 ISO 47   | 1        | PC   |            |        |                |
|     | <b>Item text1:</b> / 1.127-683.0                            |  |          |      |            |        |                |
| 17  | 7.306-049.0   | Cylinder head screw M<br>8x45-8.8-A2E ISO    | 2        | PC   |            |        |                |
| 5   | 5.585-028.0   | FLOAT  | 1        | PC   |            |        |                |
|     | <b>Item text1:</b> / 1.127-121.0 / -221.0 / -807.0          |  |          |      |            |        |                |
| 5   | 5.585-058.0   | Float BR/BD 530                              | 1        | PC   |            |        |                |
|     | <b>Item text1:</b> / 1.127-321.0 / -421.0 / -683.0 / -687.0 |  |          |      |            |        |                |
|     | <b>Item text2:</b> / -805.0 / -809.0                        |  |          |      |            |        |                |
| 11  | 7.311-541.0   | Hexagon nut M 6 -8-A2E EN<br>1661            | 3        | PC   |            |        |                |
| 41  | 7.311-008.0   | Hexagon nut M12-8-A3E ISO<br>4032            | 1        | PC   |            |        |                |
|     | <b>Item text1:</b> / 1.127-683.0                            |  |          |      |            |        |                |
| 4   | 5.363-344.0   | Joint ring                                   | 1        | PC   |            |        |                |
| 8   | 5.363-574.0   | Joint ring                                   | 1        | PC   |            |        |                |
| 48  | 5.382-645.0   | Label BR530 BAT                              | 1        | PC   |            |        |                |
| 49  | 5.382-801.0   | Label BR530 XL BAT                           | 1        | PC   |            |        |                |
|     | <b>Item text1:</b> / 1.127-221.0 /-421.0                    |  |          |      |            |        |                |
| 37  | 5.382-594.0   | Label water tap                              | 1        | PC   |            |        |                |

# 10 Cover and motor

Professional \ Floor cleaner \ Walk behind \ BR 530 XL \*EU \ Spare parts list BR 530 Netz \ Cover and motor



| POS | Article no.   | Description                              | Quantity | Unit | valid from | Remark           | Foot note text        |
|-----|---|--|----------|------|------------|------------------|-----------------------|
| 22  | 7.343-204.0   | Lock washer 6 -CuSn8 DIN 6799            | 1        | PC   |            |                  |                       |
| 33  | 6.362-385.0   | O-Ring seal 26,0 X 2,5-NBR 70            | 1        | PC   |            |                  |                       |
| 27  | 6.362-089.0   | O-Ring seal 40,0 X 3,0                   | 1        | PC   |            |                  |                       |
| 24  | 6.373-692.0   | Pipe clip D 63                           | 1        | PC   |            |                  |                       |
| 20  | 5.001-752.0   | Plate                                    | 1        | PC   |            |                  | VERSION 1             |
| 29  | 5.001-813.0   | Plate                                    | 1        | PC   |            |                  | VERSION 2             |
| 47  | 6.649-015.0   | Plug-in connection                       | 2        | PC   |            |                  |                       |
|     | <b>Item text1:</b> / 1.127-683.0                            |  |          |      |            |                  |                       |
| 19  | 6.368-295.0   | Protecting cap                           | 2        | PC   |            |                  |                       |
| 10  | 6.339-021.0   | Rubber buffer 2xM6-D20 H15               | 3        | PC   |            |                  |                       |
| 7   | 7.303-107.0   | Screw 5x16 -10.9-P2R (K-In6Rd)           | 1        | PC   |            |                  |                       |
| 30  | 5.363-420.0   | Seal                                     | 1        | PC   |            |                  | VERSION 2             |
| 3   | 5.170-032.0   | Sealing profile 2050 mm                  | 1        | PC   |            |                  | TO ORDER AS CUT GOODS |
| 16  | 5.305-204.0   | Shaped screw                             | 1        | PC   |            |                  |                       |
| 28  | 5.008-301.0   | Sheet metal component                    | 1        | PC   |            |                  |                       |
| 21  | 5.110-680.0   | Sleeve                                   | 1        | PC   |            |                  |                       |
| 14  | 6.390-215.0   | Soundproof hose                          | 1        | PC   |            |                  |                       |
| 35  | 7.777-999.0   | Stockpiling discontinued                 | 1        | PC   | 35012      |                  |                       |
| 9   | 5.308-056.0   | Stud bolt                                | 3        | PC   |            |                  |                       |
| 18  | 4.390-002.0   | Suction hose complete oil resistant      | 1        | PC   |            |                  | STANDARD              |
| 18  | 4.390-002.0   | Suction hose complete oil resistant      | 1        | PC   |            |                  | OIL RESISTANT         |
| 0   | 4.605-144.0   | Tank and cover Bp & *CN                  | 1        | PC   |            |                  |                       |
| 42  | 7.312-169.0   | Toothed lock washer A13-FSt-A3E DIN 6797 | 1        | PC   |            |                  |                       |
|     | <b>Item text1:</b> successor of 7.312-161.0                 |  |          |      |            |                  |                       |
| 42  | 7.312-161.0   | Toothed lock washer A13-FSt-PH DIN 6797  | 1        | PC   |            |                  |                       |
| 34  | 5.128-352.0   | Tube                                     | 1        | PC   |            |                  |                       |
| 12  | 6.490-135.0   | Vacuum motor 220-240V                    | 1        | PC   |            | 220-240V 50/60HZ |                       |
|     | <b>Item text1:</b> / 1.127-121.0 / -221.0 / -321.0 / -421.0 |  |          |      |            |                  |                       |
|     | <b>Item text2:</b> / -805.0 / -807.0 / -809.0               |  |          |      |            |                  |                       |

## 10 Cover and motor

Professional \ Floor cleaner \ Walk behind \ BR 530 XL \*EU \ Spare parts list BR 530 Netz \ Cover and motor

| POS | Article no.                                 | Description                       | Quantity | Unit | valid from | Remark    | Foot note text |
|-----|---|-----------------------------------|----------|------|------------|-----------|----------------|
| 12  | 4.490-001.0                                 | Vacuum motor only for replacement | 1        | PC   |            |           | OLD VERSION    |
| 12  | 6.490-183.3                                 | Vacuum motor packaged 120V 660W   | 1        | PC   |            |           |                |
| 12  | 4.035-055.0                                 | Vacuum motor replacement          | 1        | PC   |            | 120V 60HZ |                |
|     | <b>Item text1:</b> successor of 6.490-183.3 |                                   |          |      |            |           |                |
| 6   | 5.115-754.0                                 | Washer                            | 1        | PC   |            |           |                |
| 15  | 7.312-277.0                                 | Washer 8-200HV-A2E ISO 7093-1     | 3        | PC   |            |           |                |
| 32  | 7.312-017.0                                 | Washer 8-A2 ISO 7089              | 1        | PC   |            |           |                |