

## **Spare parts list**

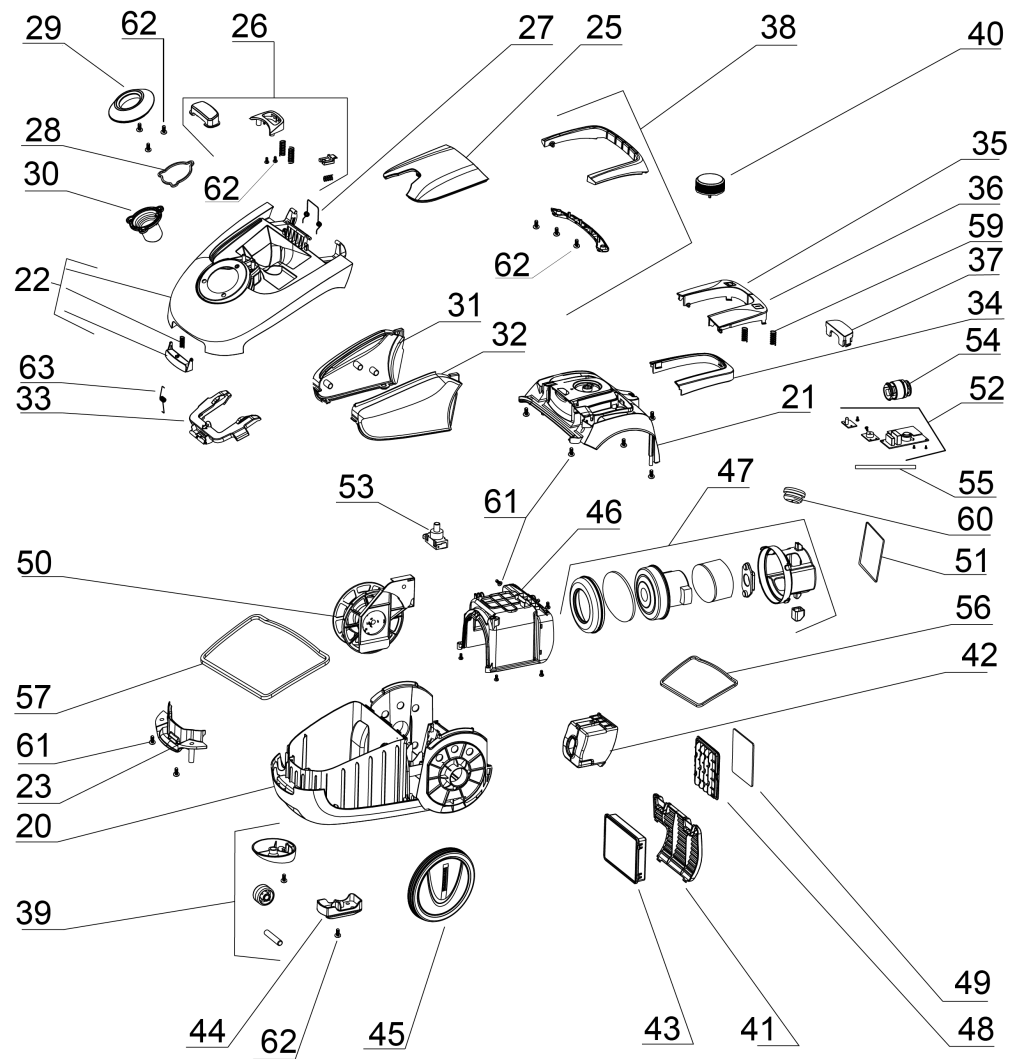
(1.198-115.0) VC 2 Premium (white) \*EU-I

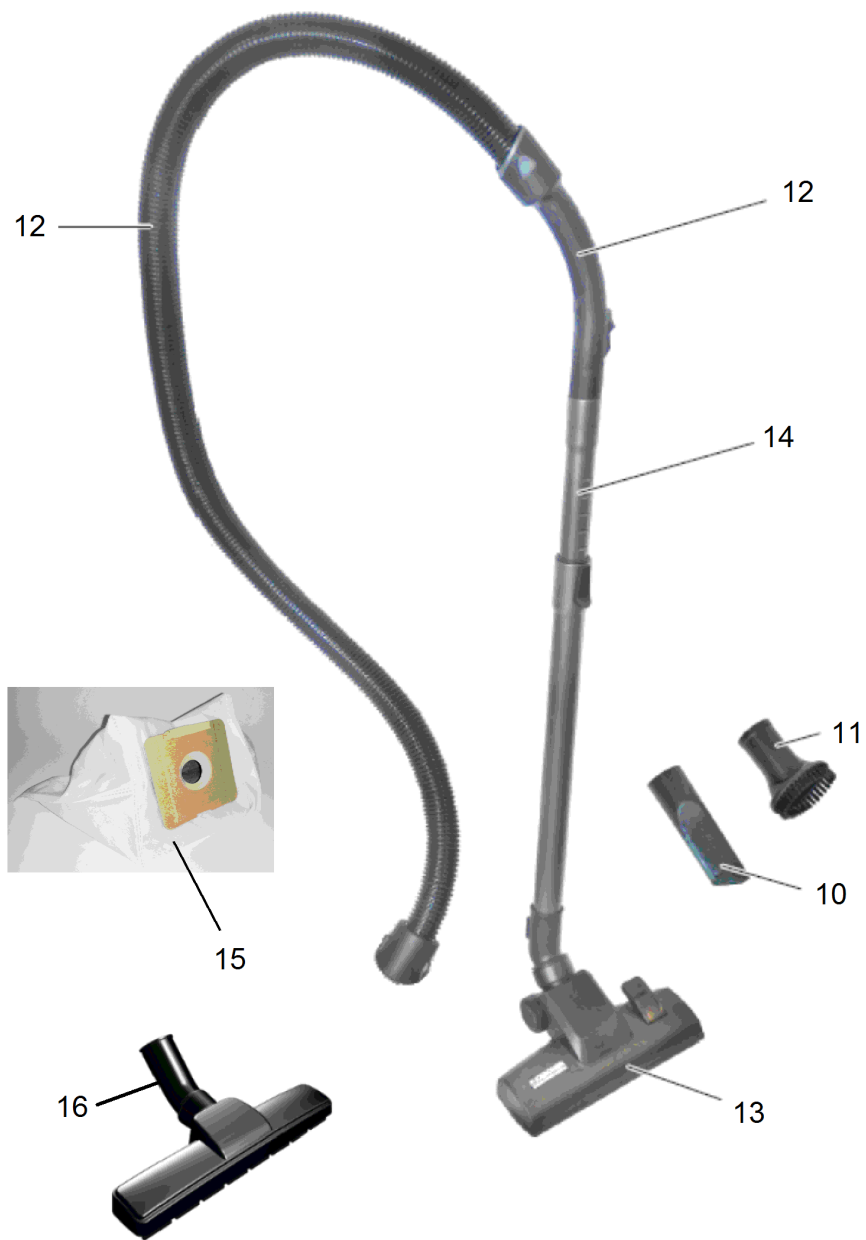
## Table of contents

---

|  |   |
|--|---|
| VC 2 Premium (white) *EU-I (1.198-115.0) | 3 |
| Short spare parts list                   | 7 |

---



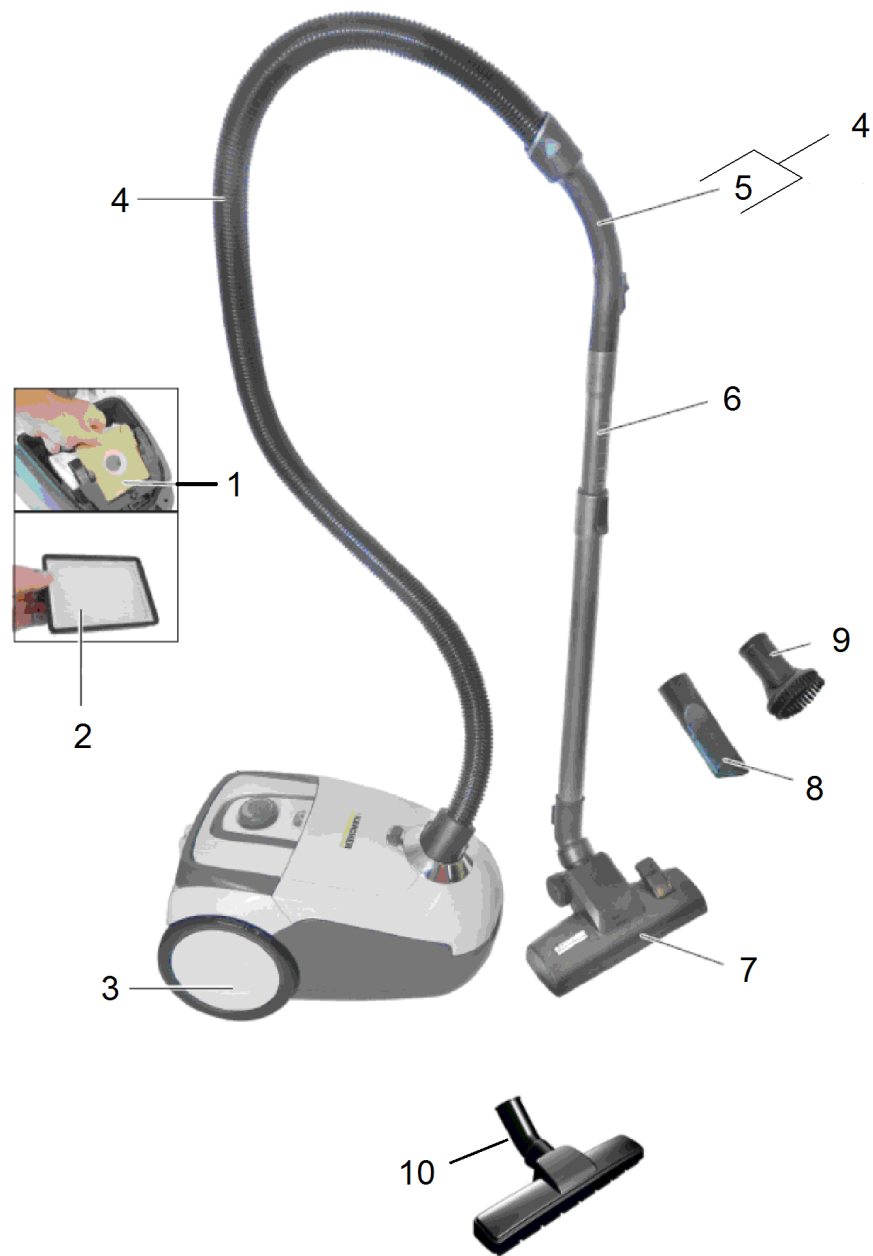


## VC 2 Premium (white) \*EU-I (1.198-115.0)

| POS | Article no. | Description                             | Quantity | Unit |
|-----|-------------|---|----------|------|
| 0   |             | Short spare parts list                  | 1.000    | ST   |
| 10  | 9.764-089.0 | Crevice nozzle                          | 1.000    | ST   |
| 11  | 9.754-007.0 | Round brush                             | 1.000    | ST   |
| 12  | 9.754-017.0 | Suction hose complete                   | 1.000    | ST   |
| 13  | 9.754-071.0 | Floor tool printed DS-009               | 1.000    | ST   |
| 14  | 9.764-088.0 | Telescopic tube 90cm                    | 1.000    | ST   |
| 15  | 2.863-236.0 | Filter bags fleece set 5 St.            | 1.000    | ST   |
| 16  | 2.863-260.0 | Parquet nozzle VC                       | 1.000    | ST   |
| 20  | 9.764-234.0 | Chassis grey                            | 1.000    | ST   |
| 21  | 9.764-235.0 | Cover rear white                        | 1.000    | ST   |
| 22  | 9.754-376.0 | Cover front complete                    | 1.000    | ST   |
| 23  | 9.764-422.0 | Hand grip front grey                    | 1.000    | ST   |
| 25  | 9.754-096.0 | Accessories flap white printed          | 1.000    | ST   |
| 26  | 9.754-111.0 | Covering cap accessories complete grey  | 1.000    | ST   |
| 27  | 9.764-164.0 | Spring buckle accessories covering cap  | 1.000    | ST   |
| 28  | 9.764-161.0 | Joint ring suction connection           | 1.000    | ST   |
| 29  | 9.764-047.0 | Covering cap suction connection chromed | 1.000    | ST   |
| 30  | 9.764-240.0 | Suction connection grey                 | 1.000    | ST   |
| 31  | 9.764-049.0 | Covering cap right grey                 | 1.000    | ST   |
| 32  | 9.764-050.0 | Covering cap left grey                  | 1.000    | ST   |
| 33  | 9.764-051.0 | Frame filter bag black                  | 1.000    | ST   |
| 34  | 9.764-241.0 | Frame grey                              | 1.000    | ST   |
| 35  | 9.764-242.0 | Pushbutton cable automatic white        | 1.000    | ST   |
| 36  | 9.764-243.0 | Pushbutton white on/off                 | 1.000    | ST   |
| 37  | 9.764-055.0 | Covering cap transparent                | 1.000    | ST   |
| 38  | 9.754-112.0 | Hand grip complete grey                 | 1.000    | ST   |
| 39  | 9.754-107.0 | Roller complete                         | 1.000    | ST   |
| 40  | 9.754-097.0 | Rotary controller grey printed          | 1.000    | ST   |
| 41  | 9.764-247.0 | Grate air outlet grey                   | 1.000    | ST   |
| 42  | 9.764-248.0 | Outlet cable grey                       | 1.000    | ST   |
| 43  | 2.863-237.0 | Filter packaged HEPA 13 VC 2            | 1.000    | ST   |
| 44  | 9.764-412.0 | Retainer floor nozzle grey              | 1.000    | ST   |
| 45  | 9.754-098.0 | Wheel white 2-K                         | 2.000    | ST   |

## VC 2 Premium (white) \*EU-I (1.198-115.0)

| POS | Article no. | Description                         | Quantity | Unit |
|-----|-------------|-------------------------------------|----------|------|
| 46  | 9.764-066.0 | Motor housing external              | 1.000    | ST   |
| 47  | 9.754-118.0 | Motor complete 230V 700W            | 1.000    | ST   |
| 48  | 9.764-068.0 | Holder filter air intake            | 1.000    | ST   |
| 49  | 9.764-181.0 | Filter air intake                   | 1.000    | ST   |
| 50  | 9.754-025.0 | Cable automatic VC 2 *KAP *EU 2x1,0 | 1.000    | ST   |
| 51  | 9.764-591.0 | New foam silencing                  | 1.000    | ST   |
| 52  | 9.754-114.0 | Circuit board packaged 700W VC 2    | 1.000    | ST   |
| 53  | 9.764-180.0 | Switch                              | 1.000    | ST   |
| 54  | 9.754-115.0 | Safety valve complete 700W          | 1.000    | ST   |
| 55  | 9.764-401.0 | Hose silicon                        | 1.000    | ST   |
| 56  | 9.764-172.0 | Seal motor housing                  | 1.000    | ST   |
| 57  | 9.764-171.0 | Seal dust box                       | 1.000    | ST   |
| 59  | 9.764-182.0 | Spring pushbutton                   | 2.000    | ST   |
| 60  | 9.764-402.0 | Plug cable gland                    | 1.000    | ST   |
| 61  | 9.764-405.0 | Pan head screw 4x16                 | 12.000   | ST   |
| 62  | 9.764-404.0 | Pan head screw 4*12                 | 4.000    | ST   |
| 63  | 9.764-162.0 | Leg spring                          | 1.000    | ST   |



## Short spare parts list

---

| <b>POS</b> | <b>Article no.</b> | <b>Description</b>           | <b>Quantity</b> | <b>Unit</b> |
|------------|--------------------|------------------------------|-----------------|-------------|
| 1          | 2.863-236.0        | Filter bags fleece set 5 St. | 1.000           | ST          |
| 2          | 2.863-237.0        | Filter packaged HEPA 13 VC 2 | 1.000           | ST          |
| 3          | 9.754-098.0        | Wheel white 2-K              | 1.000           | ST          |
| 4          | 9.754-017.0        | Suction hose complete        | 1.000           | ST          |
| 5          | 4.195-222.0        | Hand tube complete DS 5.800  | 1.000           | ST          |
| 6          | 9.764-088.0        | Telescopic tube 90cm         | 1.000           | ST          |
| 7          | 9.754-071.0        | Floor tool printed DS-009    | 1.000           | ST          |
| 8          | 9.764-089.0        | Crevice nozzle               | 1.000           | ST          |
| 9          | 9.754-007.0        | Round brush                  | 1.000           | ST          |
| 10         | 2.863-260.0        | Parquet nozzle VC            | 1.000           | ST          |