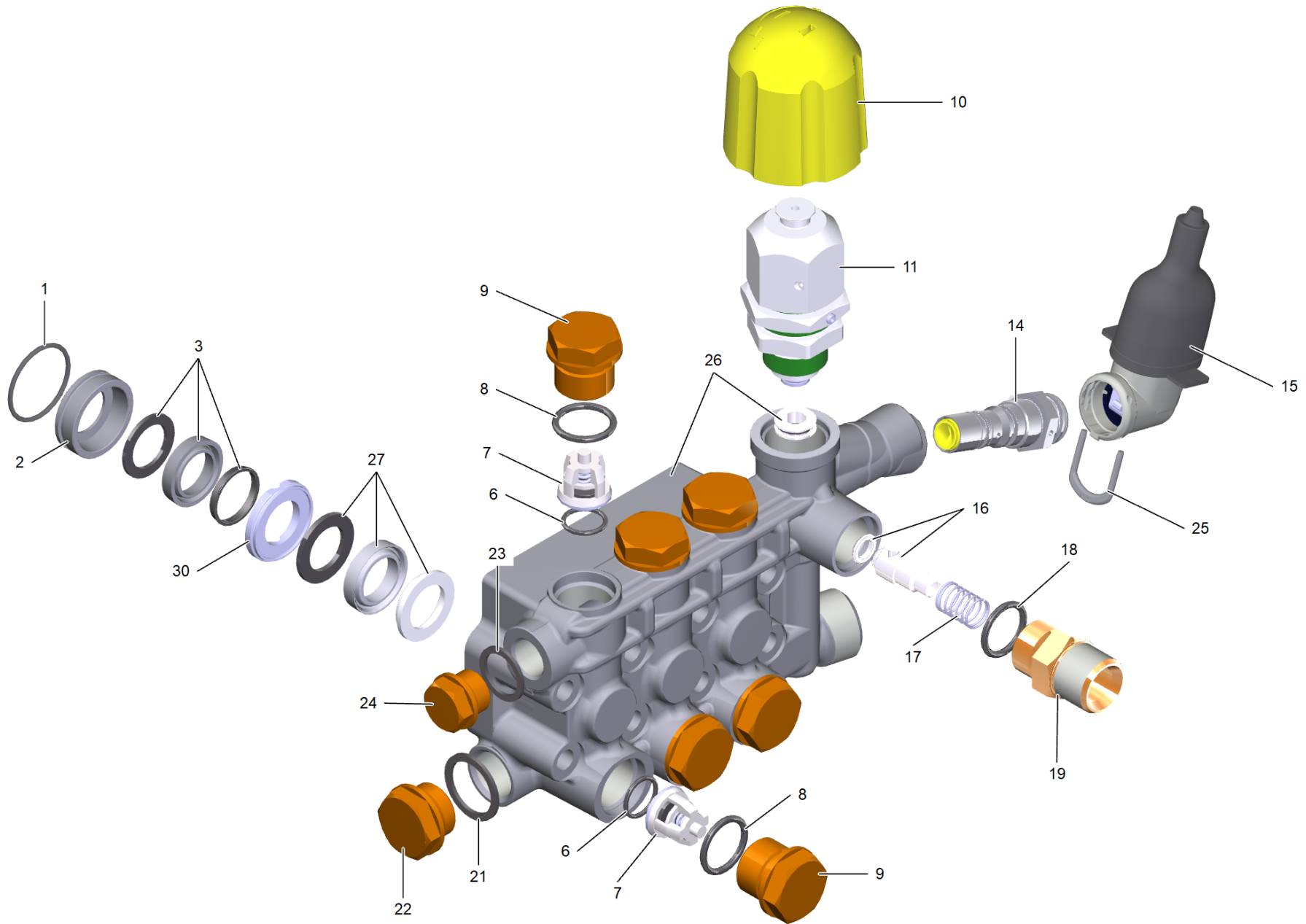


# 21 Cylinder head complete pressure switch (9.751-492.0)

Professional \ High pressure cleaner cold water \ Electric motor \ HD 10/23-4 Classic \*CN \ Pump set \ Cylinder head complete pressure switch



## 21 Cylinder head complete pressure switch (9.751-492.0)

Professional \ High pressure cleaner cold water \ Electric motor \ HD 10/23-4 Classic \*CN \ Pump set \ Cylinder head complete pressure switch



POS	Article no.	Description	Quantity	Unit
26	9.751-085.0	Cylinder head pressure switch only for r	1	PC
20	7.306-047.0	Cylinder head screw M8x60 -8.8-A2E ISO4	8	PC
22	9.761-067.0	Drain plug G 1/2"	1	PC
24	9.761-057.0	Drain plug G 3/8"	1	PC
11	6.101-265.0	Excess-current with valve seat	1	PC
10	9.761-237.0	Handle	1	PC
27	9.761-106.0	HD seal D 18	3	PC
	<b>Item text1:</b> replaced by 6.365-493.3			
23	9.761-007.0	Joint ring G 3/8"	1	PC
3	9.761-108.0	ND seal D 18	3	PC
	<b>Item text1:</b> replaced by 6.365-495.3			
12	9.761-099.0	O-Ring seal 12.42x1.78	1	PC
8	9.760-107.0	O-Ring seal 16 x 2 - NBR 80 (9.081-406)	6	PC
18	9.761-004.0	O-Ring seal 17.13 x 2.62	1	PC
1	9.761-107.0	O-Ring seal 28.30 x 1.78	3	PC
6	9.761-104.0	O-Ring seal D 15.54x2.62	6	PC
16	9.751-027.0	Piston complete only for replacement	1	PC
17	9.761-064.0	Pressure spring	1	PC
14	9.751-030.0	Pressure switch complete only for replac	1	PC
25	5.034-494.0	Retaining bracket	1	PC
19	9.761-052.0	Screw plug	1	PC
21	9.761-105.0	Seal G 1/2"	1	PC
2	9.768-623.0	Seat 18x26-0.3	3	PC
27	6.365-493.0	Set of gaskets high-pressure W1	3	PC
	<b>Item text1:</b> replaced by 6.365-493.3			
27	6.365-493.3	Set of gaskets high-pressure W1	3	PC
	<b>Item text1:</b> successor of 9.761-106.0			
3	6.365-495.3	Set of gaskets low-pressure W2	3	PC
	<b>Item text1:</b> successor of 9.761-108.0			
15	9.751-064.0	Switch complete *CN	1	PC
7	9.751-004.0	Valve complete	6	PC
9	9.761-319.0	Valve screw inside hexagon M24x1.5	6	PC
13	9.751-028.0	Valve seat complete only for replacement	1	PC

## 21 Cylinder head complete pressure switch (9.751-492.0)

Professional \ High pressure cleaner cold water \ Electric motor \ HD 10/23-4 Classic \*CN \ Pump set \ Cylinder head complete pressure switch



POS	Article no.	Description	Quantity	Unit
30	9.761-056.0	Washer D 18 x 28	3	PC