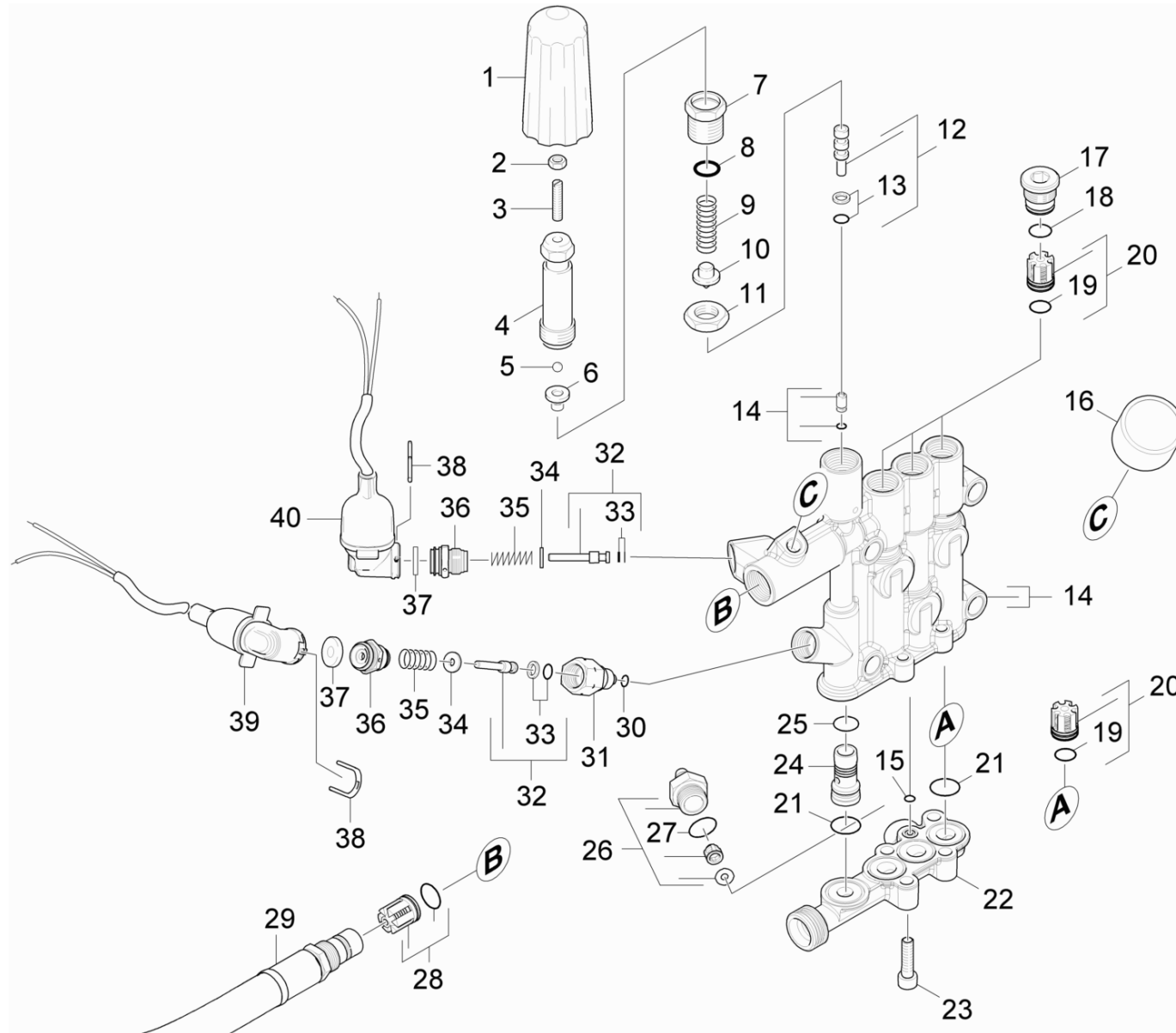


21 Cylinder head

Overview technical documents/Professional/High pressure cleaner hotwater/Electric motor/HDS 8/18-4 C *EU-II (1.174-220.0)/Spare parts list HDS 8/18-4C *EU-II/20 Pump set/21 Cylinder head



21 Cylinder head

Overview technical documents/Professional/High pressure cleaner hotwater/Electric motor/HDS 8/18-4 C *EU-II (1.174-220.0)/Spare parts list HDS 8/18-4C *EU-II/20 Pump set/21 Cylinder head

Rez.daļas/nodil.pakļ.daļas	Poz.	Materiāla Nr.	Nosaukums	Daudzums	Pārdoš. vienība
X	1	5.322-103.0	Handle	1.000	ST
	2	7.311-002.0	hexagon nut	1.000	ST
	3	7.307-017.0	threaded pin	1.000	ST
	4	5.304-070.0	Skrūve ar sešstūru galvu	1.000	ST
	5	7.401-931.0	locking ring	1.000	ST
	6	5.582-121.0	Vārstu plate	1.000	ST
	7	5.404-082.0	hollow screw	1.000	ST
	8	6.362-079.0	Gredzenblīve 18,0 X 2,5	1.000	ST
X	9	5.332-444.0	Spirālveida atspere	1.000	ST
	10	5.584-114.0	valve pin	1.000	ST
	11	5.311-204.0	Sešstūra uzgrieznis M22 x 1,5	1.000	ST
X-X	12	4.553-198.0	Piston complete only for replacement	1.000	ST
X	13	6.362-468.0	Gredzenblīve, pilns komplekts 1ST.-R.	1.000	ST
	14	4.550-995.0	Cylinder head complete only for replacem	1.000	ST
	15	6.362-703.0	Gredzenblīve 6,0x1,5-NBR 70	1.000	ST
X-X	16	4.422-990.0	Pressure gauge complete only for replace	1.000	ST
	17	5.583-146.0	Vārsta skrūve	3.000	ST
X-X	18	6.362-481.0	Gredzenblīve 14,0 x 2,0 NBR 80	3.000	ST
X-X	19	6.363-003.0	Gredzenblīve 13,0 X 2,0-NBR 90	6.000	ST
X-X	20	2.884-512.0	Valve (3 Stueck)	2.000	ST
X-X	21	6.363-536.0	Gredzenblīve 21x1,5	4.000	ST
	22	5.427-439.0	Manifold water intake	1.000	ST
	23	7.306-043.0	Cil. galvas skr. M8x30 -8.8-A2E ISO	4.000	ST
	24	5.110-800.0	Uzmava	1.000	ST
	25	6.362-381.0	Gredzenblīve 13x2 - NBR 70	1.000	ST

21 Cylinder head

Overview technical documents/Professional/High pressure cleaner hotwater/Electric motor/HDS 8/18-4 C *EU-II (1.174-220.0)/Spare parts list HDS 8/18-4C *EU-II/20 Pump set/21 Cylinder head

Rez.daļas/nodil.pakļ.daļas	Poz.	Materiāla Nr.	Nosaukums	Daudzums	Pārdoš. vienība
X-X	26	4.580-581.0	Valve	1.000	ST
	27	6.362-427.0	Gredzenblīve 15,0x2,0	1.000	ST
X-X	28	4.580-594.0	Valve complete	1.000	ST
X-X	29	4.440-895.0	Hose SDS	1.000	ST
	30	6.362-853.0	Gredzenblīve 4,47x1,78	1.000	ST
	31	5.402-705.0	Savienotājdetaļa	1.000	ST
X-X	32	4.553-197.0	Valve	2.000	ST
X-X	33	6.363-037.0	Gredzenblīve, pilns komplekts 1ST.-R.	2.000	ST
	34	5.115-796.0	Paplāksne	2.000	ST
X-X	35	5.332-268.0	Spirālveida atspere	2.000	ST
	36	5.411-148.0	Vītņtapa	2.000	ST
	37	5.367-030.0	Membrāna	2.000	ST
	38	5.034-494.0	Retaining bracket	2.000	ST
X-X	39	4.744-225.0	High-pressure outlet complete K5.91M	1.000	ST
X-X	40	4.744-224.0	Switch	1.000	ST
X-X	100	2.884-008.0	Pump set	1.000	ST