

## **Spare parts list** (1.127-809.0) BR 530

## DE HINWEISE

### Weitere Sprachen:

Diese Ersatzteilliste ist in weiteren Sprachen erhältlich. Sie erhalten diese unter [www.kaercher.com](http://www.kaercher.com) im Bereich Service.

Die Schreibweise der Teilenummer, z.B. 75456380, entspricht der Teilenummer 7.545-638.0.

### Mengenangaben:

Die Mengenangaben in der Ersatzteilliste entsprechen den in der Baugruppe verbauten Stückzahlen der Bauteile.

### Meterware:

Ersatzteile welche als Meterware geliefert werden sind auf Einbaulänge selbst zu kürzen. Die Stückzahlen sind als Mindestbestellmenge =1m angegeben und müssen je nach Bedarf auf weitere volle Meterzahlen erhöht werden.

### Versionen/ Werknummern:

Sind Versionen oder Werknummern in der Ersatzteilliste angegeben, ist anhand dieser vor Bestellung zu prüfen, welches Bauteil für ihr Gerät verwendet werden muss.

### Lackierte Teile:

Bei Bestellungen von lackierten Teilen welche in der Ersatzteilliste nicht in verschiedenen Farben ausgewiesen sind, ist zusätzlich die Farbnummer oder Farbe mit anzugeben.

### Technische Änderungen:

Technische Änderungen sowie das Recht der ausschließlichen Auswertung unseres geistigen Eigentums behalten wir uns vor.

## EN INSTRUCTIONS

### Other languages:

This list of spare parts is also available in other languages. You can get this list from [www.kaercher.com](http://www.kaercher.com) in the Service division.

The designation of the part number e.g. 75456380 is equal to 7.545-638.0.

### Quantity details:

The quantity details in the spare parts list correspond to the number of pieces of the component installed in the assembly group.

### Piece goods:

Spare parts that are sold as piece goods are to be cut to the desired length. The quantities have been indicated as minimum order quantity =1m and must be rounded off to the full meter figure depending on your requirements.

### Version/ Plant numbers:

If version or plant numbers are mentioned in the spare parts list, then use the same to check before ordering which spare part needs to be used for your appliance.

### Painted parts:

While ordering painted parts that are not mentioned in the spare parts list in their colour variations, please mention the colour number or the colour you require.

### Technical changes:

We reserve the right to make technical changes as well as the right to exclusive use of our intellectual property.

## FR REMARQUES

### Autres langues:

Cette liste de pièces de rechange est disponible en autres langues. Cela est disponible sous [www.kaercher.com](http://www.kaercher.com) dans le menu Service.

La désignation du numéro de pièce, par ex. 75456380, correspond au numéro de pièce 7.545-638.0.

### Indications de quantité:

Les indications de quantité dans la liste de pièces de rechange correspondre aux nombres de pièces des composant utilisées dans la construction.

### Matériel au mètre:

Les pièces de rechange qui sont livrées au mètre doivent être raccourcies à longueur souhaitée par l'acheteur même. Les nombres des pièces sont indiquées en quantité de commande minimale = 1m et doivent être augmentés selon le besoin à une chiffre de mètre complète.

### Versions/ Numéros d'usine:

Lorsqu'il sont indiquées des versions ou des numéros d'usine dans la liste de pièces de rechange, vous devez vérifier que composant doit être utilisé pour votre appareil.

### Pièces laquées:

Pour commander des pièces laquées, où les différentes couleurs ne sont pas indiquées dans la liste des pièces de rechange, vous devez indiquer en plus le numéro de la couleur ou seulement la couleur.

### Modifications techniques:

Nous nous réservons la possibilité des modifications techniques ainsi le droit d'exploitation exclusive de notre propriété intellectuelle.

## IT AVVERTENZE

### Altre lingue:

Il presente elenco di parti di ricambio è disponibile sul nostro sito Web anche in altre lingue: sotto [www.kaercher.com](http://www.kaercher.com) alla voce "Service".

L'indicazione del codice pezzo, ad es. 75456380, corrisponde al codice pezzo 7.545-638.0

### Indicazioni di quantità:

Le indicazioni di quantità riportate dall'elenco "parti di ricambio" corrispondono al numero delle singole componenti contenute nella rispettiva unità.

### Merce a metro:

Le parti di ricambio fornite come "merce a metro" devono venire in seguito accorciate alla lunghezza necessaria per il montaggio. La quantità unitaria è indicata come "quantità minima di ordinazione = 1m" e deve all'occorrenza venire moltiplicata per il numero intero di metri necessari.

### Versioni / Numeri di fabbricazione:

Quando l'elenco "parti di ricambio" riporta diverse versioni o numeri di fabbricazione, confrontare la versione o il numero di fabbricazione del ricambio desiderato con quelle/i presenti nell'elenco e indicarla/o al momento dell'ordinazione.

### Parti di ricambio verniciate:

Nel caso di ricambi verniciati, se l'elenco parti di ricambio non ne riporta espressamente i diversi colori, al momento dell'ordinazione è necessario indicare anche il colore o il numero del colore desiderato.

### Modifiche tecniche:

Ci riserviamo il diritto di apportare modifiche tecniche così come il diritto di utilizzo esclusivo della nostra proprietà intellettuale.

## ES INDICACIONES

### Otros idiomas:

La lista de piezas de repuesto se puede adquirir en otros idiomas. La puede adquirir en [www.kaercher.com](http://www.kaercher.com) en el área de servicios.

La notación de los números de las piezas, p.ej. 75456380 corresponde al número de pieza 7.545-638.0.

### Cantidades:

Las indicaciones de cantidades de la lista de piezas de repuesto corresponden al número de piezas montadas en el componente.

### Mercancía por metros:

Las piezas de repuesto que se suministran por metros se pueden cortar al largo deseado. La unidad mínima de pedido es de = 1 m y el número de metros completos se puede aumentar según necesidad.

### Versiones/números de fábrica:

Si se indica la versión o número de fábrica en la lista de piezas de repuesto, se debe comprobar en ella la pieza a usar para su aparato antes de realizar el pedido.

### Piezas lacadas:

Al realizar pedidos de piezas lacadas que no estén indicadas en los diferentes colores en la lista de piezas de repuesto, se debe indicar también la referencia del color o el color.

### Modificaciones técnicas:

Reservados los derechos de realizar modificaciones técnicas y aprovechar nuestra propiedad intelectual.

## PL WSKAZÓWKI

### Pozostałe języki:

Ta lista części zamiennych jest dostępna w także w innych językach. Mogą ją Państwo pobrać ze strony [www.kaercher.com](http://www.kaercher.com) w dziale Serwis.

Sposób zapisywania numeru części, np. 75456380, odpowiada numerowi części 7.545-638.0.

### Dane ilości:

Dane ilości podane w liście części zamiennych odpowiadają liczbie sztuk podzespołów tworzących dany moduł.

### Towar sprzedawany na metry:

Części zamienne dostarczane jako towar sprzedawany na metry po zamontowaniu należy samodzielnie skrócić do potrzebnej długości. Liczba sztuk podana jest jako minimalna ilość zamówienia =1m i w zależności od potrzeb zwiększa się ją o kolejne pełne metry.

### Wersje/ Numer zakładu:

Jeżeli w liście części zamiennych podane są wersje lub numery zakładu, przed zamówieniem na ich podstawie należy sprawdzić, który podzespół stosuje się w Państwa urządzeniu.

### Części lakierowane:

W przypadku zamówień części lakierowanych, które w liście części zamiennych nie podano w wielu kolorach, należy dodatkowo zaznaczyć nr koloru lub kolor.

### Zmiany techniczne:

Zastrzegamy sobie prawo do zmian technicznych oraz wyłącznego wykorzystywania naszej własności intelektualnej.

## **RU УКАЗАНИЯ:**

### **Другие языки:**

Данный список запасных частей также доступен на других языках. Вы найдете его на сайте [www.kaercher.com](http://www.kaercher.com) в разделе Service  
Маркировка номера детали, например, 75456380, соответствует номеру детали 7.545-638.0.

### **Указание количества:**

Количественные данные в списке запасных частей соответствуют числу компонентов, входящих в состав узлов.

### **Товар, продаваемый на метры:**

Запасные части, продающиеся на метры, необходимо обрезать до нужной длины. Число изделий указано в виде минимального объема заказа = 1м и их количество можно округлить до требуемого по мере необходимости.

### **Варианты исполнения/заводские номера:**

Если варианты исполнения или заводские номера указаны в списке запасных частей, то перед заказом необходимо проверить, какая деталь подходит для вашего устройства.

### **Лакированные детали:**

При заказе лакированных деталей, варианты расцветки которых не указаны в списке запасных частей, необходимо дополнительно указать номер цвета или необходимый для вас цвет.

### **Технические изменения:**

Мы оставляем за собой право на технические изменения, а также право на исключительное использование нашей интеллектуальной собственности.

## Table of contents

---

Order instructions	2
BR 530 (1.127-809.0)	6
67 Spare parts list BR 530 Netz (5.958-155.0)	7
10 Cover and motor	8
20 Appliance individual parts	12
21 Control panel	13
22 Control panel BR 530	17
23 Control panel	21
24 Handhold	25
25 Handhold BR 530	28
30 Chassis BR 530	31
40 Switch box 230 V	34
50 Suction mechanism BD 530 BAT	36
51 Bracket suction bar	37
52 Suction bar	39
40 Add-on kit support wheels suction bar (2.639-561.0)	41
1 Spare parts list support wheels (0.082-417.0)	42
10 Support wheels	43
53 Suction bar	45
54 Suction bar	47
1 Suction bar straight 850mm (4.777-406.0)	49
600 Spare parts list suction bar straight 85 (5.971-725.0)	50
10 Suction bar straight 850mm	51
2 Suction bar curved 850mm (4.777-416.0)	53
600 Spare parts list suction bar curved 850m (5.971-726.0)	54
10 Suction bar curved 850mm	55
60 Power brush -BR	57
26 Tension roller D = 33,5 (4.250-083.0)	63
70 Pad roll	64
80 Accessories carriage	66
Add-on kit carriage BR530 (2.639-807.0)	68
4 Spare parts list add-on kit carriage BR (5.958-859.0)	69
10 Individual parts	70

BR 530 (1.127-809.0)

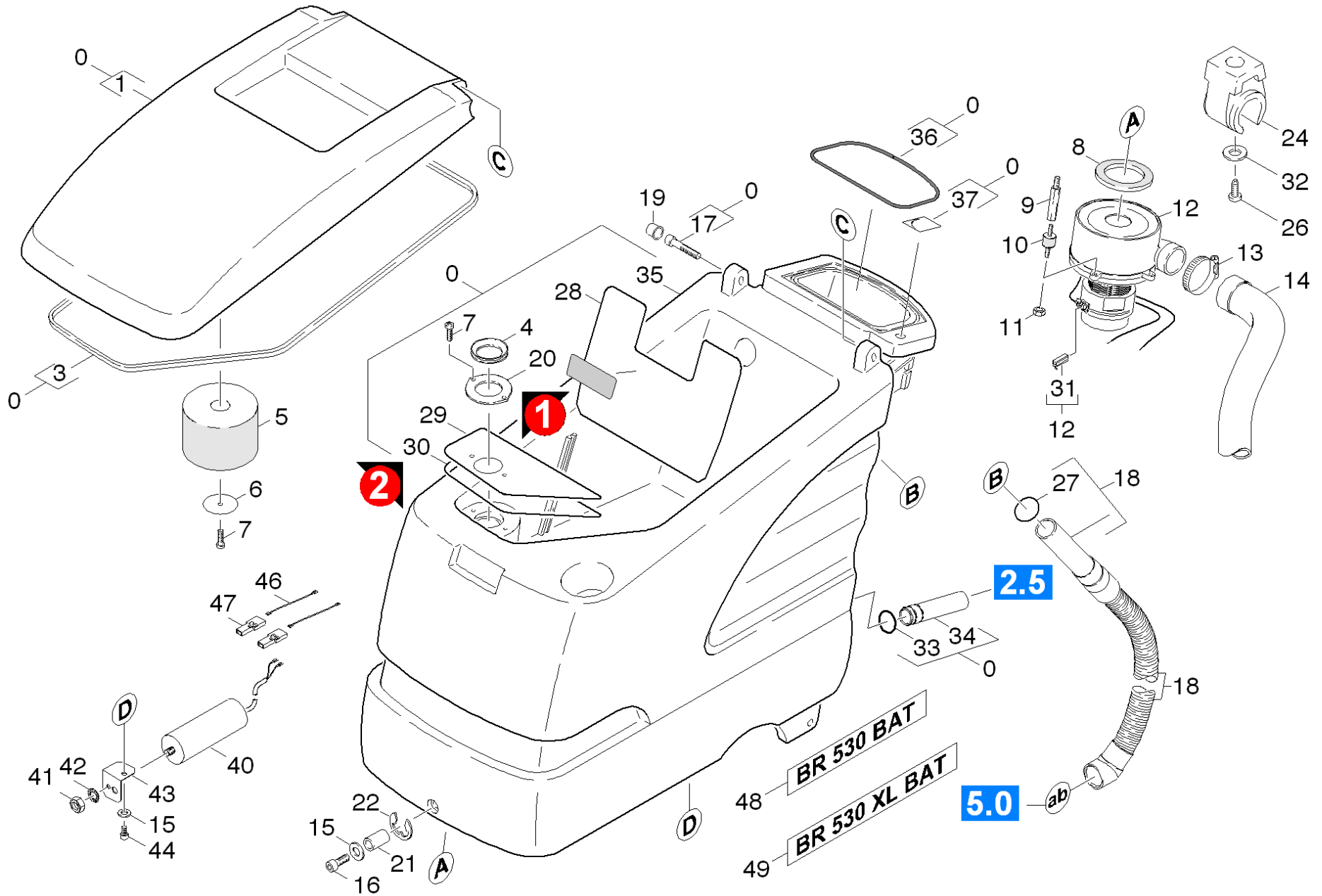
---

POS	Article no.	Description	Quantity	Unit
67	5.958-155.0	Spare parts list BR 530 Netz	1.000	ST
	Item text2: 11278090			

---

67 Spare parts list BR 530 Netz (5.958-155.0)

POS	Description	Quantity	Unit	Serial number to
10	Cover and motor	1.000	ST	
20	Appliance individual parts	1.000	ST	
30	Chassis BR 530	1.000	ST	
40	Switch box 230 V	1.000	ST	<35011
50	Suction mechanism BD 530 BAT	1.000	ST	
60	Power brush -BR	1.000	ST	
70	Pad roll	1.000	ST	
80	Accessories carriage	1.000	ST	





## 10 Cover and motor

POS	Article no.	Description	Quantity	Unit	Serial number from	Remark	Foot note text
0	4.605-067.0	Housing and cover	1.000	ST			
1	5.063-766.0	Cover	1.000	ST			
3	6.366-043.0	Sealing profile	2.000	M			TO ORDER AS CUT GOODS
4	5.363-344.0	Joint ring	1.000	ST			
5	5.585-058.0	Float BR/BD 530	1.000	ST			
	<b>Item text1:</b> / 1.127-321.0 / -421.0 / -683.0 / -687.0						
	<b>Item text2:</b> / -805.0 / -809.0						
5	5.585-028.0	FLOAT	1.000	ST			
	<b>Item text1:</b> / 1.127-121.0 / -221.0 / -807.0						
6	5.115-754.0	Washer	1.000	ST			
7	7.303-107.0	Screw 5x16 -10.9-P2R (K-In6Rd)	1.000	ST			
8	5.363-574.0	Joint ring	1.000	ST			
9	5.308-056.0	Stud bolt	3.000	ST			
10	6.339-021.0	Rubber buffer 2xM6-D20 H15	3.000	ST			
11	7.311-541.0	Hexagon nut M 6-8-A2E EN 1661	3.000	ST			
12	4.035-055.0	Vacuum motor replacement	1.000	ST		120V 60HZ	
	<b>Item text1:</b> / 1.127-683.0 / -687.0						
12	6.490-135.0	Vacuum motor	1.000	ST		220-240V 50/60HZ	
	<b>Item text1:</b> / 1.127-121.0 / -221.0 / -321.0 / -421.0						
	<b>Item text2:</b> / -805.0 / -807.0 / -809.0						
12	4.490-001.0	Vacuum motor only for replacement	1.000	ST			OLD VERSION
13	6.641-474.0	Cable tape 8-210	1.000	ST			
14	6.390-215.0	Soundproof hose	1.000	ST			
15	7.312-277.0	Washer 8-200HV-A2E ISO7093-1	3.000	ST			
16	5.305-204.0	Shaped screw	1.000	ST			
17	7.306-049.0	Cylinder head screw M 8x45-8.8-A2E ISO	2.000	ST			
18	4.390-007.0	Suction hose complete	1.000	ST			STANDARD
18	4.390-002.0	Suction hose complete oil resistant	1.000	ST			OIL RESISTANT
19	6.368-295.0	Protecting cap	2.000	ST			

## 10 Cover and motor

POS	Article no.	Description	Quantity	Unit	Serial number from	Remark	Foot note text
20	5.001-752.0	Plate	1.000	ST			VERSION 1
21	5.110-680.0	Sleeve	1.000	ST			
22	7.343-204.0	Lock washer 6 -CuSn8 DIN 6799	1.000	ST			
24	6.373-692.0	Pipe clip D 63	1.000	ST			
25	6.647-081.0	Cable tape	1.000	ST			
26	7.306-031.0	Screw M 6x16-A2-70 DIN 7984	1.000	ST			
27	6.362-089.0	O-Ring seal 40,0 X 3,0	1.000	ST			
28	5.008-301.0	Sheet metal component	1.000	ST			
29	5.001-813.0	Plate	1.000	ST			VERSION 2
30	5.363-420.0	Seal	1.000	ST			VERSION 2
31	6.610-221.0	Carbon brush set	1.000	ST			
32	7.312-017.0	Washer 8-A2 ISO 7089	1.000	ST			
33	6.362-385.0	O-Ring seal 26,0 X 2,5-NBR 70	1.000	ST			
34	5.128-352.0	Tube	1.000	ST			
35	7.777-999.0	Stockpiling discontinued	1.000	ST	35012		
36	6.273-145.0	Cord cellular rubber	1.000	ZST			
37	5.382-594.0	Label water tap	1.000	ST			
40	6.661-236.0	Capacitor 100µF	1.000	ST			
	<b>Item text1:</b> / 1.127-683.0						
41	7.311-008.0	Hexagon nut M12-8-A3E ISO 4032	1.000	ST			
	<b>Item text1:</b> / 1.127-683.0						
42	7.312-169.0	Toothed lock washer A13-FST-A3E DIN 679	1.000	ST			
	<b>Item text1:</b> / 1.127-683.0						
43	5.017-709.0	Angle	1.000	ST			
	<b>Item text1:</b> / 1.127-683.0						
44	7.306-119.0	Cylinder head screw M8x12 -A2-70 ISO 47	1.000	ST			
	<b>Item text1:</b> / 1.127-683.0						
46	4.822-227.0	Cable black 1,5mm²x100mm	2.000	ST			
	<b>Item text1:</b> / 1.127-683.0						

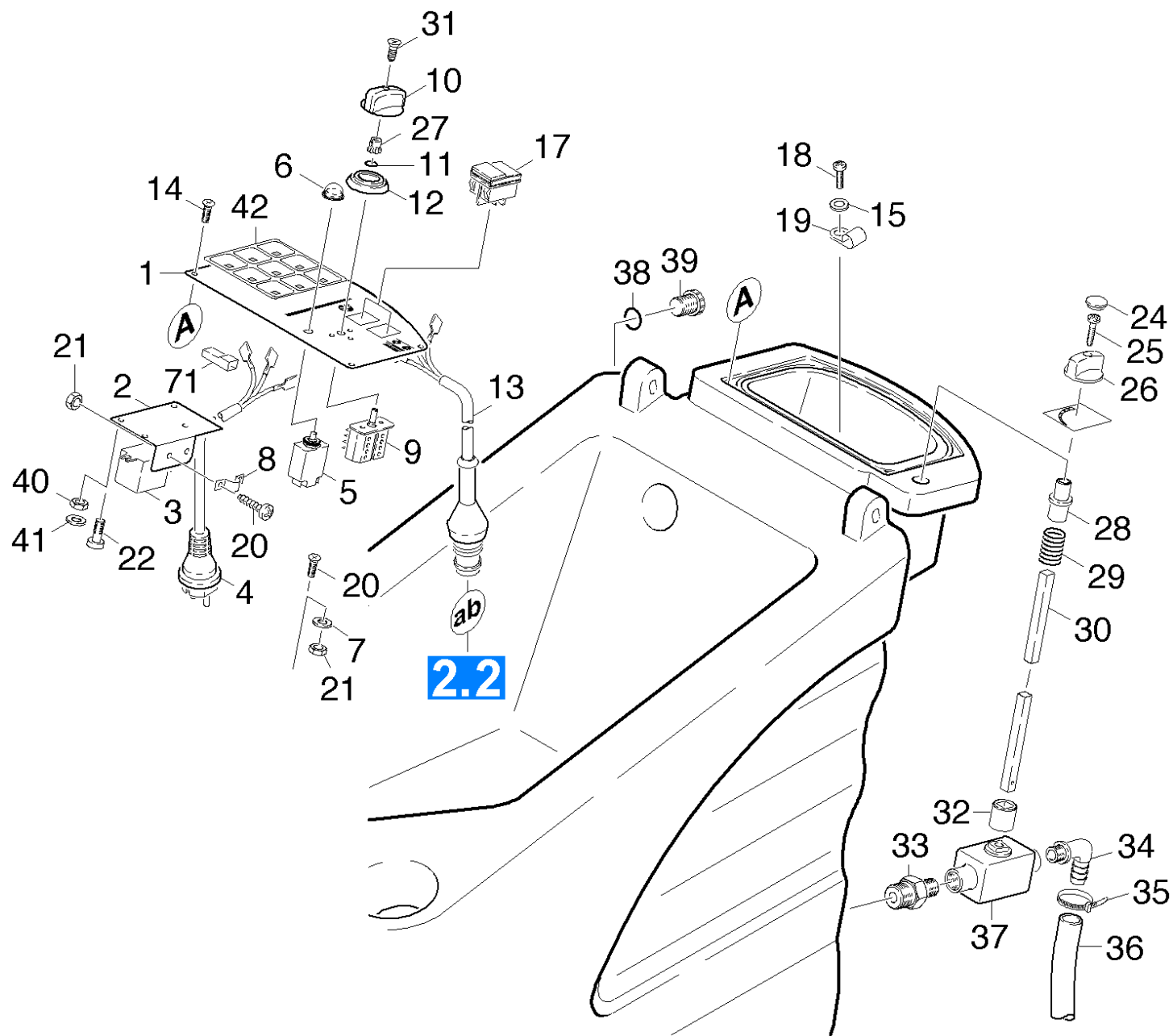
## 10 Cover and motor

---

POS	Article no.	Description	Quantity	Unit	Serial number from	Remark	Foot note text
47	6.649-015.0	Plug-in connection	2.000	ST			
	<b>Item text1:</b> / 1.127-683.0						
48	5.382-645.0	Label BR530 BAT	1.000	ST			
49	5.382-801.0	Label BR530 XL BAT	1.000	ST			
	<b>Item text1:</b> / 1.127-221.0 /-421.0						

20 Appliance individual parts

POS	Description	Quantity	Unit	Serial number from	Serial number to
21	Control panel	1.000	ST		<35011
22	Control panel BR 530	1.000	ST	>35012	
23	Control panel	1.000	ST	>47202	
24	Handhold	1.000	ST		<35011
25	Handhold BR 530	1.000	ST	>35012	



## 21 Control panel

POS	Article no.	Description	Quantity	Unit	Foot note text
1	4.841-097.0	Control panel	1.000	ST	
		<b>Item text1:</b> / 1.127-141.0 / -241.0 / -341.0			
		<b>Item text2:</b> / -441.0			
2	6.373-687.0	Holder	1.000	ST	
		<b>Item text1:</b> / 1.127-141.0 / -241.0 / -341.0			
		<b>Item text2:</b> / -441.0			
3	6.633-420.0	Relay	1.000	ST	
		<b>Item text1:</b> / 1.127-141.0 / -241.0 / -341.0			
		<b>Item text2:</b> / -441.0			
4	6.647-418.0	Cable with plug	1.000	ST	
		<b>Item text1:</b> / 1.127-141.0 / -241.0 / -341.0			
		<b>Item text2:</b> / -441.0			
5	6.630-081.0	Fuse motor protecting 7A	1.000	ST	
		<b>Item text1:</b> / 1.127-141.0 / -241.0 / -341.0			
		<b>Item text2:</b> / -441.0			
6	6.630-082.0	Protecting cap	1.000	ST	
		<b>Item text1:</b> / 1.127-141.0 / -241.0 / -341.0			
		<b>Item text2:</b> / -441.0			
7	7.312-163.0	Toothed lock washer A4,3-FST-PH DIN 679	3.000	ST	
8	6.373-689.0	Pipe clamp	1.000	ST	
		<b>Item text1:</b> / 1.127-141.0 / -241.0 / -341.0			
		<b>Item text2:</b> / -441.0			
9	6.631-872.0	Switch	1.000	ST	
		<b>Item text1:</b> / 1.127-141.0 / -241.0 / -341.0			
		<b>Item text2:</b> / -441.0			
10	5.321-415.0	Handhold	1.000	ST	
		<b>Item text1:</b> / 1.127-141.0 / -241.0 / -341.0			
		<b>Item text2:</b> / -441.0			
11	6.362-581.0	O-Ring seal 4,47x1,78	1.000	ST	
		<b>Item text1:</b> / 1.127-141.0 / -241.0 / -341.0			
		<b>Item text2:</b> / -441.0			
12	5.031-215.0	Screen	1.000	ST	
		<b>Item text1:</b> / 1.127-141.0 / -241.0 / -341.0			

## 21 Control panel

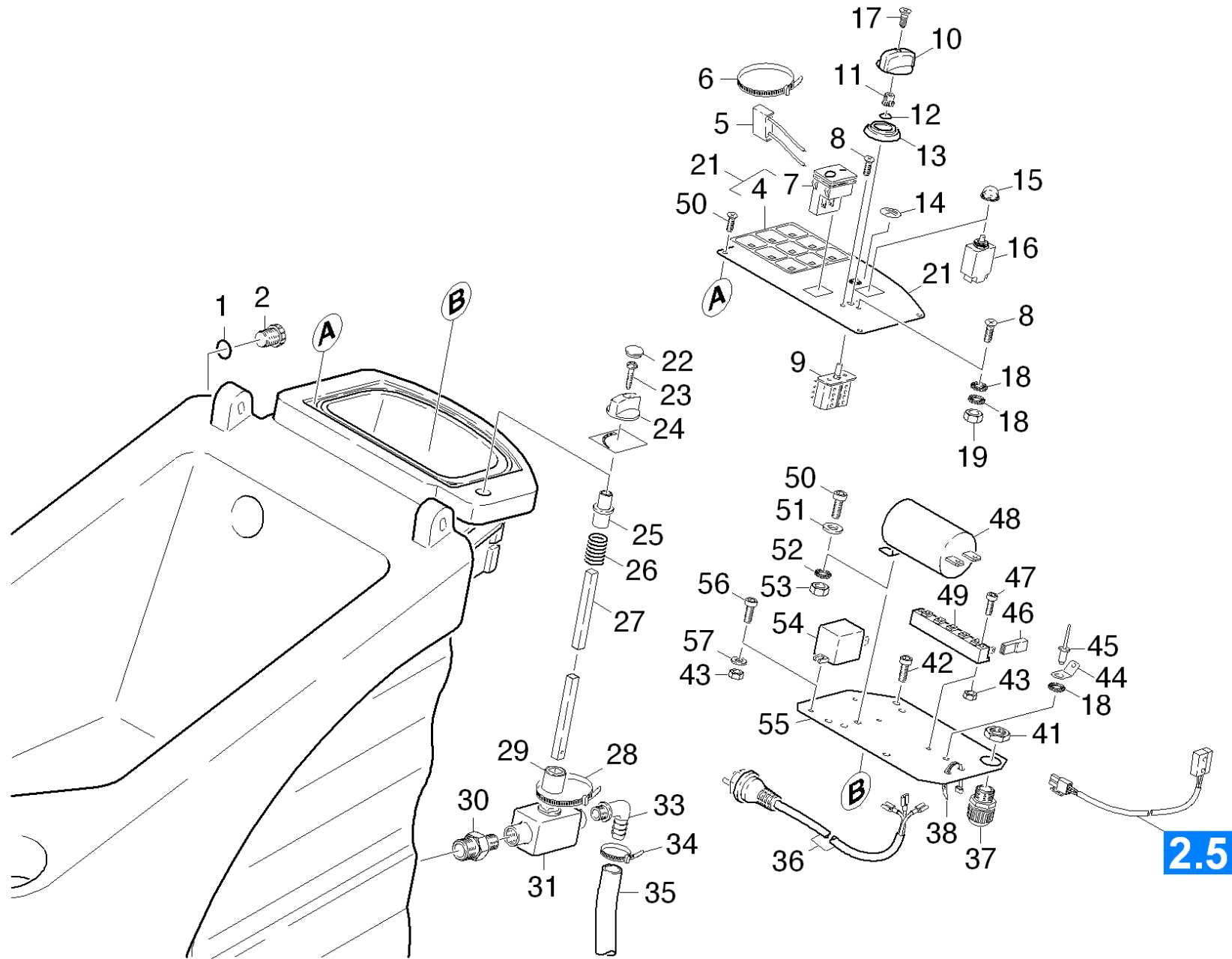
POS	Article no.	Description	Quantity	Unit	Foot note text
	<b>Item text2:</b> / -441.0				
13	4.839-223.0	Electrical small parts	1.000	ST	
	<b>Item text1:</b> / 1.127-141.0 / -241.0 / -341.0				
	<b>Item text2:</b> / -441.0				
14	7.303-129.0	Screw 4x16 -10.9-R2R (K-In6Rd)	4.000	ST	
15	7.312-278.0	Washer 5-200HV-A2E ISO7093-1	1.000	ST	
17	6.630-385.0	Switch	2.000	ST	
18	6.303-155.0	Screw 5x16	1.000	ST	
19	6.373-670.0	Pipe clamp	1.000	ST	
20	7.306-206.0	Screw M4x10 -A2-70 ISO 14583	5.000	ST	
21	7.311-001.0	Hexagon nut M4 -8-A2E ISO 4032	4.000	ST	
22	7.306-051.0	Screw M3x6 -8.8-A2K (In6Rd)	2.000	ST	
24	6.368-076.0	Ornamental hub cap D10/D12	1.000	ST	
25	7.303-065.0	Sheet metal screw ST3,5X25-ST-A2R (IN6R	1.000	ST	
26	5.321-509.0	Handhold	1.000	ST	
27	6.631-768.0	Clamp handhold	1.000	ST	
	<b>Item text1:</b> / 1.127-141.0 / -241.0 / -341.0				
	<b>Item text2:</b> / -441.0				
28	5.470-034.0	Coupler	1.000	ST	
29	5.332-290.0	Helical spring	1.000	ST	
30	5.107-195.0	Bar	1.000	ST	
31	7.306-050.0	Screw M2,5x10 -8.8-R2R (In6Rd)	1.000	ST	
32	5.470-033.0	Coupler	1.000	ST	
33	5.409-266.0	Double nipple G3/8"-M12	1.000	ST	
34	6.390-002.0	Angle bushing	1.000	ST	
35	6.388-545.0	Hose clip	1.000	ST	
36	6.388-248.0	Hose DN12,5	1.000	M	TO ORDER AS CUT GOODS
37	6.412-289.0	Ball valve	1.000	ST	
38	6.362-151.0	O-Ring d. 10 x 2 NBR 70	1.000	ST	
39	6.382-001.0	Screw plug	1.000	ST	
40	7.311-000.0	Hexagon nut M3 -8-A2E ISO 4032	4.000	ST	
41	7.312-043.0	Washer 3-A2 ISO 7089	2.000	ST	
42	5.841-349.0	Control panel reworking	1.000	ST	

## 21 Control panel

---

<b>POS</b>	<b>Article no.</b>	<b>Description</b>	<b>Quantity</b>	<b>Unit</b>	<b>Foot note text</b>
71	6.647-748.0	Insulation sheath	5.000	ST	





## 22 Control panel BR 530

POS	Article no.	Description	Quantity	Unit	Foot note text
1	6.641-654.0	Flat gasket 13X20	1.000	ST	
2	6.382-003.0	Cap closure	1.000	ST	
4	7.777-999.0	Stockpiling discontinued	1.000	ST	
5	6.661-122.0	Capacitor	1.000	ST	
6	6.641-458.0	Cable tape	1.000	ST	
7	6.630-385.0	Switch	1.000	ST	
8	7.306-206.0	Screw M4x10 -A2-70 ISO 14583	5.000	ST	
9	6.631-872.0	Switch	1.000	ST	
10	5.321-415.0	Handhold	1.000	ST	
11	6.631-768.0	Clamp handhold	1.000	ST	
12	6.362-581.0	O-Ring seal 4,47x1,78	1.000	ST	
13	5.031-215.0	Screen	1.000	ST	
14	6.643-145.0	Label earthing	2.000	ST	
15	6.630-082.0	Protecting cap	1.000	ST	
16	6.630-081.0	Fuse motor protecting 7A	1.000	ST	
17	7.306-050.0	Screw M2,5x10 -8.8-R2R (In6Rd)	1.000	ST	
18	7.312-163.0	Toothed lock washer A4,3-FST-PH DIN 679	4.000	ST	
19	7.311-001.0	Hexagon nut M4 -8-A2E ISO 4032	3.000	ST	
21	4.841-119.0	Control panel	1.000	ST	
22	6.368-076.0	Ornamental hub cap D10/D12	1.000	ST	
23	7.303-065.0	Sheet metal screw ST3,5X25-ST-A2R (IN6R	1.000	ST	
24	5.321-509.0	Handhold	1.000	ST	
25	5.470-034.0	Coupler	1.000	ST	
26	5.332-290.0	Helical spring	1.000	ST	
27	5.107-195.0	Bar	1.000	ST	
28	6.641-464.0	Cable tie	6.000	ST	
29	5.470-033.0	Coupler	1.000	ST	
30	5.409-306.0	Double nipple	1.000	ST	
31	6.412-289.0	Ball valve	1.000	ST	
33	6.390-002.0	Angle bushing	1.000	ST	
34	6.388-545.0	Hose clip	1.000	ST	
35	6.388-248.0	Hose DN12,5	2.000	M	TO ORDER AS CUT GOODS
36	6.648-517.0	Cable with plug *RA	1.000	ST	

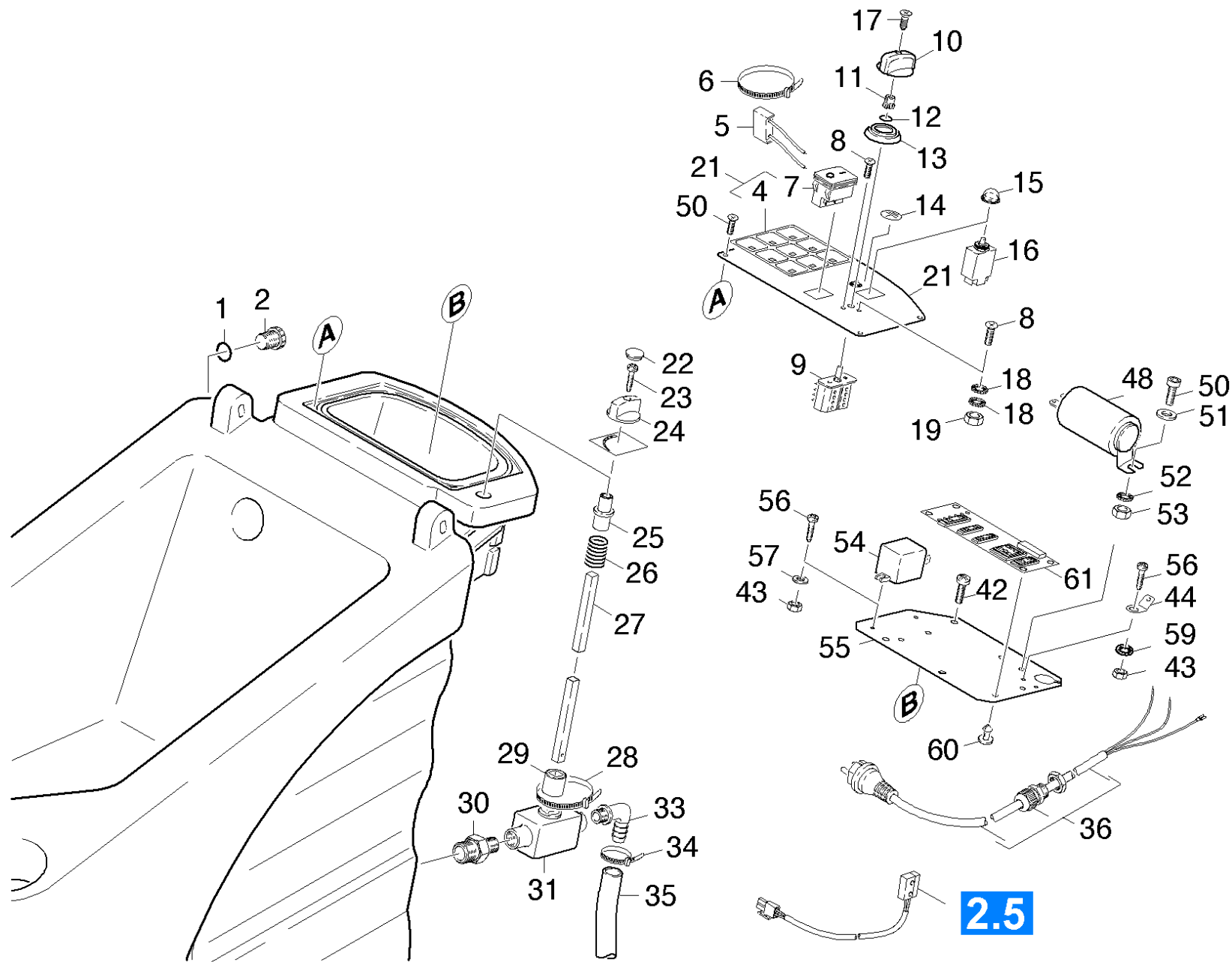
## 22 Control panel BR 530

POS	Article no.	Description	Quantity	Unit	Foot note text
	<b>Item text1:</b> / 1.127-809.0				
36	6.648-626.0	Cable with plug *UL	1.000	ST	
	<b>Item text1:</b> / 1.127-684.0				
36	6.648-507.0	Cable with plug *GB	1.000	ST	
	<b>Item text1:</b> / 1.127-805.0				
36	6.648-439.0	Cable with plug	1.000	ST	
	<b>Item text1:</b> / 1.127-141.0 / -241.0 / -341.0				
	<b>Item text2:</b> / -441.0				
37	6.641-355.0	Cable gland PG9	1.000	ST	
38	6.641-463.0	Cable tape	9.000	ST	
40	6.642-003.0	Insulating hose 4	1.000	M	TO ORDER AS CUT GOODS
41	6.641-366.0	Locknut PG 9	1.000	ST	
42	7.303-107.0	Screw 5x16 -10.9-P2R (K-In6Rd)	3.000	ST	
43	7.311-000.0	Hexagon nut M3 -8-A2E ISO 4032	2.000	ST	
44	6.641-239.0	Tab	2.000	ST	
45	7.315-005.0	Blind rivet 4,0x 6-A2/A2 ISO15983	1.000	ST	
46	6.647-748.0	Insulation sheath	5.000	ST	
47	7.306-204.0	Screw M 3X 10-A2-70 (IN6RD)	2.000	ST	
48	6.661-290.0	Capacitor 30 mF	1.000	ST	ONLY FOR ATB MOTOR
48	6.661-215.0	Capacitor	1.000	ST	ONLY FOR IBMEI-MOTOR
	<b>Item text1:</b> / 1.127-141.0 / -241.0 / -341.0				
	<b>Item text2:</b> / -441.0				
49	6.643-556.0	Terminal clamp	1.000	ST	
50	7.306-071.0	Screw M5x10 -8.8-R2R (In6Rd)	5.000	ST	
51	7.312-002.0	Washer 5-200HV-A3E ISO 7090	1.000	ST	
52	7.312-172.0	Toothed lock washer A5,3-FSt-A3E DIN 67	1.000	ST	
53	7.311-002.0	Hexagon nut M5 -8-A2E ISO 4032	1.000	ST	
54	6.633-449.0	Relay 120V	1.000	ST	
	<b>Item text1:</b> / 1.127-684.0				
54	6.633-420.0	Relay	1.000	ST	
	<b>Item text1:</b> / 1.127-141.0 / -241.0 / -341.0				
	<b>Item text2:</b> / -441.0				
55	5.007-204.0	Plate	1.000	ST	

## 22 Control panel BR 530

---

<b>POS</b>	<b>Article no.</b>	<b>Description</b>	<b>Quantity</b>	<b>Unit</b>	<b>Foot note text</b>
56	7.306-203.0	Screw M 3X 8-A2-70 (IN6RD)	2.000	ST	
57	7.312-043.0	Washer 3-A2 ISO 7089	2.000	ST	



## 23 Control panel

POS	Article no.	Description	Quantity	Unit	Serial number from	Serial number to	Foot note text
1	6.641-654.0	Flat gasket 13X20	1.000	ST			
2	6.382-003.0	Cap closure	1.000	ST			
4	7.777-999.0	Stockpiling discontinued	1.000	ST			
5	6.661-122.0	Capacitor	1.000	ST			
6	6.641-458.0	Cable tape	1.000	ST			
7	6.630-385.0	Switch	1.000	ST			
8	7.306-206.0	Screw M4x10 -A2-70 ISO 14583	5.000	ST			
9	6.631-872.0	Switch	1.000	ST			
10	5.321-415.0	Handhold	1.000	ST			
11	6.631-768.0	Clamp handhold	1.000	ST			
12	6.362-581.0	O-Ring seal 4,47x1,78	1.000	ST			
13	5.031-215.0	Screen	1.000	ST			
14	6.643-145.0	Label earthing	2.000	ST			
15	6.630-082.0	Protecting cap	1.000	ST			
16	6.630-081.0	Fuse motor protecting 7A	1.000	ST			
17	7.306-050.0	Screw M2,5x10 -8.8-R2R (In6Rd)	1.000	ST			
18	7.312-163.0	Toothed lock washer A4,3-FST- PH DIN 679	4.000	ST			
19	7.311-001.0	Hexagon nut M4 -8-A2E ISO 4032	3.000	ST			
21	4.841-119.0	Control panel	1.000	ST			
22	6.368-076.0	Ornamental hub cap D10/D12	1.000	ST			
23	7.303-065.0	Sheet metal screw ST3,5X25-ST-A2R (IN6R)	1.000	ST			
24	5.321-509.0	Handhold	1.000	ST			
25	5.470-034.0	Coupler	1.000	ST			
26	5.332-290.0	Helical spring	1.000	ST			
27	5.107-195.0	Bar	1.000	ST			
28	6.641-464.0	Cable tie	6.000	ST			
29	5.470-033.0	Coupler	1.000	ST			
30	5.409-306.0	Double nipple	1.000	ST			
31	6.412-289.0	Ball valve	1.000	ST			

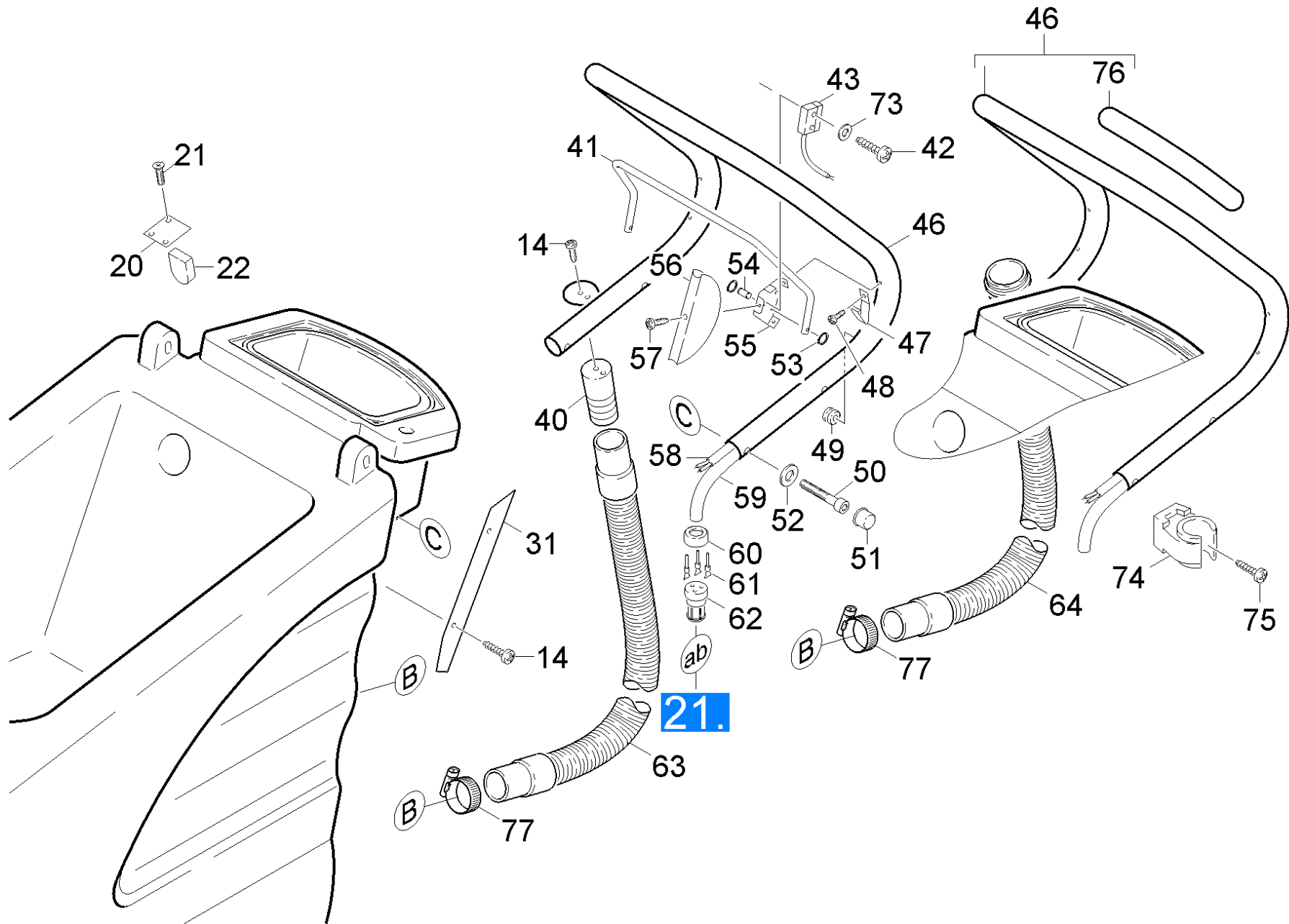
## 23 Control panel

POS	Article no.	Description	Quantity	Unit	Serial number from	Serial number to	Foot note text
33	6.390-002.0	Angle bushing	1.000	ST			
34	6.388-545.0	Hose clip	1.000	ST			
35	6.388-248.0	Hose DN12,5	2.000	M			TO ORDER AS CUT GOODS
36	6.648-762.0	Cable with plug *	1.000	ST	47202		
	<b>Item text1:</b> / 1.127-683.0						
36	6.648-764.0	Cable with plug *RA	1.000	ST	47202		
	<b>Item text1:</b> / 1.127-809.0						
36	6.648-738.0	Cable with plug	1.000	ST	47202		
	<b>Item text1:</b> / 1.127-321.0 / -421.0						
36	6.648-762.0	Cable with plug *	1.000	ST	47202		
	<b>Item text1:</b> / 1.127-805.0 / -807.0						
36	6.648-626.0	Cable with plug *UL	1.000	ST		47201	
	<b>Item text1:</b> / 1.127-683.0						
36	6.648-517.0	Cable with plug *RA	1.000	ST		47201	
	<b>Item text1:</b> / 1.127-809.0						
36	6.648-439.0	Cable with plug	1.000	ST		47201	
	<b>Item text1:</b> / 1.127-121.0 / -221.0 / -321.0						
	<b>Item text2:</b> / -421.0 / -805.0 / -807.0						
36	6.648-507.0	Cable with plug *GB	1.000	ST			
42	7.303-107.0	Screw 5x16 -10.9-P2R (K-In6Rd)	3.000	ST			
43	7.311-000.0	Hexagon nut M3 -8-A2E ISO 4032	6.000	ST			
44	6.641-234.0	Cable lug M6	2.000	ST			
48	6.661-215.0	Capacitor	1.000	ST			ONLY FOR IBMEI-MOTOR
	<b>Item text1:</b> / 1.127-121.0 / -221.0 / -321.0 / -421.0 / -683.0 / -805.0 / -807.0 / -809.0						
48	6.661-290.0	Capacitor 30 mF	1.000	ST			ONLY FOR ATB MOTOR
50	7.306-071.0	Screw M5x10 -8.8-R2R (In6Rd)	5.000	ST			
51	7.312-002.0	Washer 5-200HV-A3E ISO 7090	1.000	ST			
52	7.312-172.0	Toothed lock washer A5,3-FSt-A3E DIN 67	1.000	ST			
53	7.311-002.0	Hexagon nut M5 -8-A2E ISO 4032	1.000	ST			
54	6.633-449.0	Relay 120V	1.000	ST			

## 23 Control panel

POS	Article no.	Description	Quantity	Unit	Serial number from	Serial number to	Foot note text
	<b>Item text1:</b> / 1.127-683.0						
54	6.633-420.0	Relay	1.000	ST			
	<b>Item text1:</b> / 1.127-121.0 / -221.0 / -321.0						
	<b>Item text2:</b> / -421.0 / -805.0 / -807.0 / -809.0						
55	5.007-618.0	Plate	1.000	ST			
56	7.306-203.0	Screw M 3X 8-A2-70 (IN6RD)	3.000	ST			
57	7.312-043.0	Washer 3-A2 ISO 7089	2.000	ST			
59	7.312-234.0	Serrated lock washer A3,2 -FSt- A3E DIN6	4.000	ST			
60	6.646-322.0	Distance holder	4.000	ST			
61	6.682-641.0	Circuit board distributor BR/BD 530 Netz	1.000	ST			



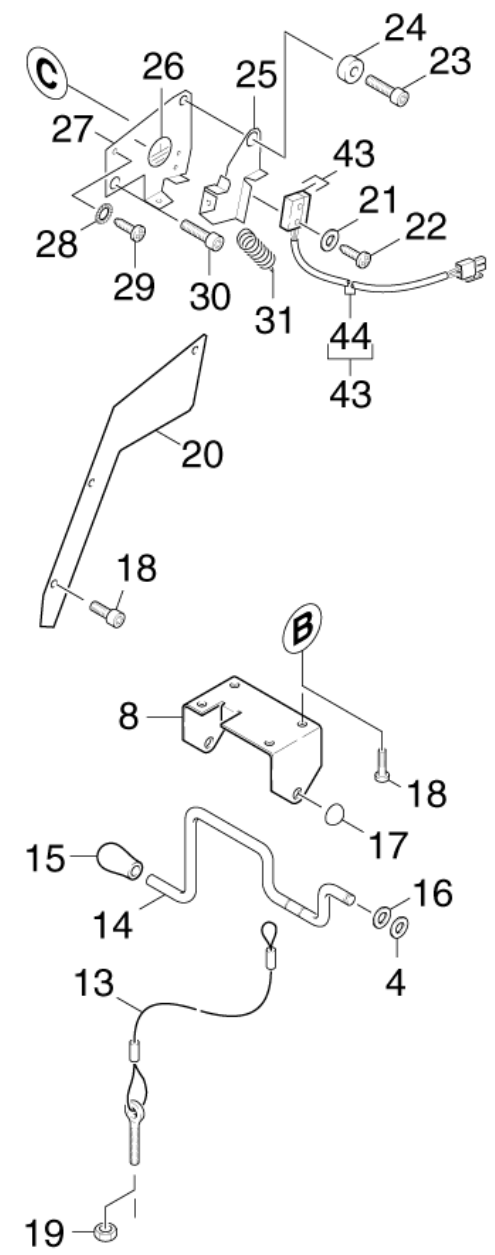
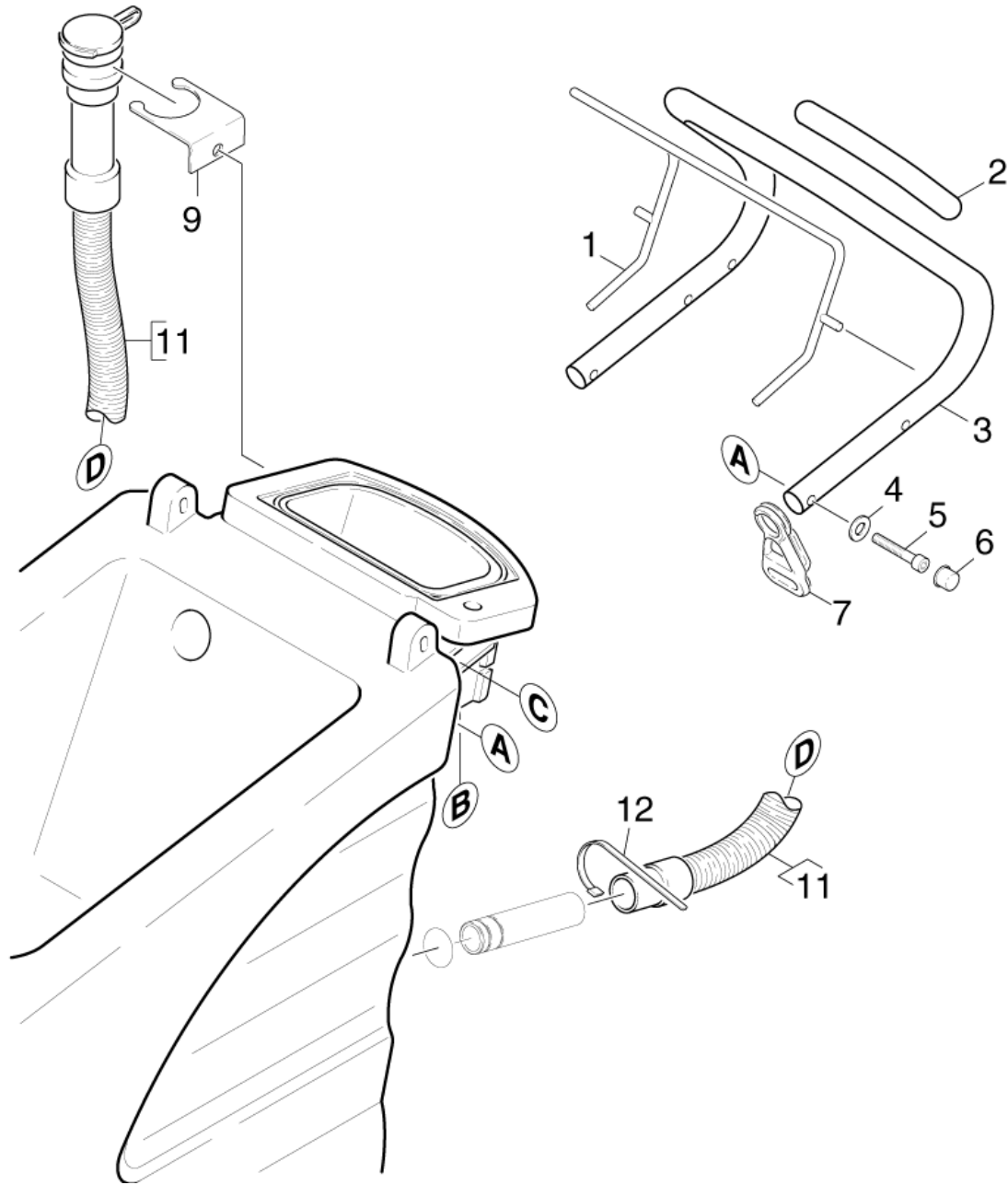


## 24 Handhold

POS	Article no.	Description	Quantity	Unit	Serial number from	Serial number to	Foot note text
14	7.303-129.0	Screw 4x16 -10.9-R2R (K-In6Rd)	2.000	ST			
20	5.004-837.0	Strap RBE4/ SPUR 3820	1.000	ST			
21	7.303-125.0	Countersunk screw 4x16 -10.9-R2R (In6Rd)	3.000	ST			
22	5.365-220.0	Seal stop	2.000	ST			
31	5.001-716.0	Plate	1.000	ST			
40	5.030-350.0	Moulded part	1.000	ST		14814	
41	5.034-554.0	Retaining bracket cabinet	1.000	ST			
42	7.303-386.0	Sheet metal screw ST2,2X13,0-ST-A2E ISO	2.000	ST			
43	6.630-061.0	Micro switch	1.000	ST			
46	4.321-099.0	Handhold	1.000	ST		14814	
46	4.321-134.0	Handhold	1.000	ST	14815		
47	5.337-031.0	Plate spring stop	1.000	ST			
48	7.303-031.0	Screw M4x10 -St-P2R (In6Rd)	4.000	ST			
49	6.641-450.0	Wire protecting sleeve	1.000	ST			
	<b>Item text1:</b> / 1.127-141.0 / -241.0 / -341.0						
	<b>Item text2:</b> / -441.0						
50	7.306-044.0	Cylinder head screw M8x35 -8.8-A2E ISO4	4.000	ST			
51	6.368-295.0	Protecting cap	4.000	ST			
52	7.312-004.0	Washer 8 -200HV-A3E ISO 7090	4.000	ST			
53	7.343-305.0	Lock washer 3,2-A2 DIN 6799	4.000	ST			
54	5.316-862.0	Bolt stop	2.000	ST			
55	5.044-120.0	Holder storage cabinet	2.000	ST			
56	5.031-541.0	Covering cap	1.000	ST			
57	7.303-135.0	Sheet metal screw ST4,2X 6,5-ST-A2R (IN	2.000	ST			
58	6.648-026.0	Cable green/yellow 0,75mm²x370mm	1.000	ST			
	<b>Item text1:</b> / 1.127-141.0 / -241.0 / -341.0						
	<b>Item text2:</b> / -441.0						
59	6.642-003.0	Insulating hose 4	1.000	M			TO ORDER AS CUT GOODS

## 24 Handhold

POS	Article no.	Description	Quantity	Unit	Serial number from	Serial number to	Foot note text
60	6.647-995.0	Cap rubber two-core -60x200	1.000	ST			
	<b>Item text1:</b> / 1.127-141.0 / -241.0 / -341.0						
	<b>Item text2:</b> / -441.0						
61	6.646-390.0	Pin contact 0,3-0,5mm <sup>2</sup>	3.000	ST			QUANTITY ACCORDING TO DEMAND
62	6.646-389.0	Plug housing triple-pole	1.000	ST			
	<b>Item text1:</b> / 1.127-141.0 / -241.0 / -341.0						
	<b>Item text2:</b> / -441.0						
63	4.446-010.0	Drain hose BR/BD 530	1.000	ST	14770		FOR ASA 80
63	6.390-177.0	Drain hose DN32	1.000	ST		14769	
64	6.390-733.0	Drain hose oil resistant DN32 BR-BD 530	1.000	ST			
73	7.312-067.0	Washer 4-A2 ISO 7089	2.000	ST			
74	6.373-692.0	Pipe clip D 63	1.000	ST	14815		
75	7.306-119.0	Cylinder head screw M8x12 -A2-70 ISO 47	1.000	ST	14815		
76	6.390-269.0	Hose	1.000	M	14815		TO ORDER AS CUT GOODS
77	6.388-549.0	Hose clip	1.000	ST			

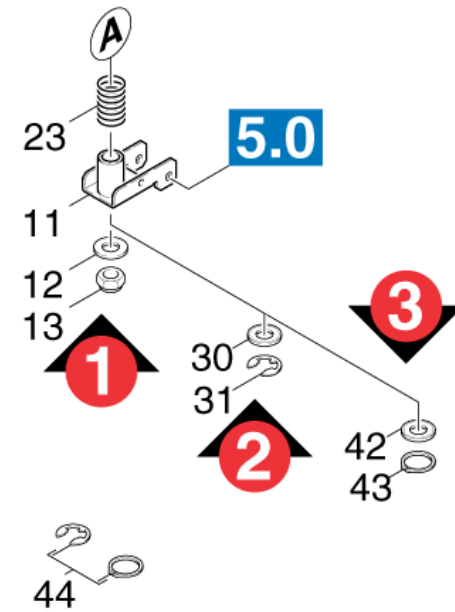
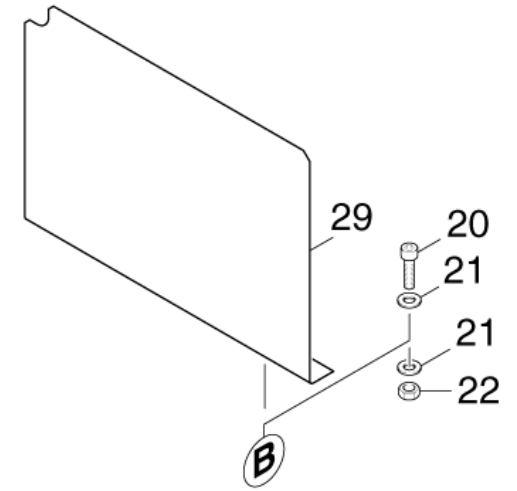
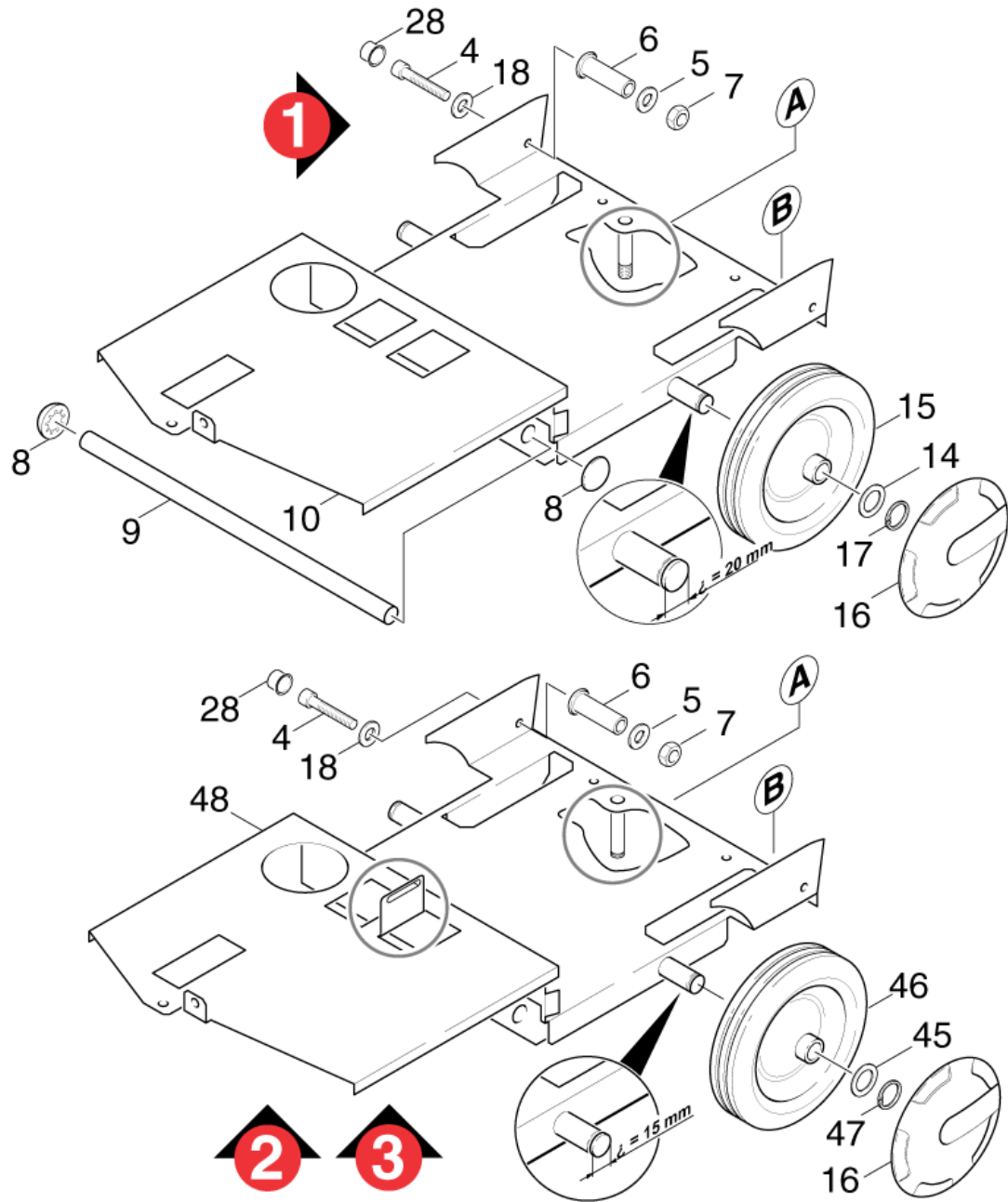


25 Handhold BR 530

POS	Article no.	Description	Quantity	Unit	Serial number from	Serial number to	Remark	Foot note text
1	4.034-107.0	Retaining bracket complete	1.000	ST				
2	6.390-269.0	Hose	1.000	M				TO ORDER AS CUT GOODS
3	4.321-135.0	Handhold	1.000	ST				
4	7.312-017.0	Washer 8-A2 ISO 7089	10.000	ST				
5	7.306-044.0	Cylinder head screw M8x35 -8.8-A2E ISO4	4.000	ST				
6	6.368-295.0	Protecting cap	4.000	ST				
7	6.641-776.0	Strain relief	1.000	ST				
8	5.044-298.0	Holder	1.000	ST				
9	5.059-011.0	Sheet metal component	1.000	ST				
10	7.306-119.0	Cylinder head screw M8x12 -A2-70 ISO 47	1.000	ST				
11	6.390-733.0	Drain hose oil resistant DN32 BR-BD 530	1.000	ST				STANDARD
12	6.388-549.0	Hose clip	2.000	ST				
13	4.172-016.0	Rope suction beam retraction	1.000	ST				
14	4.034-222.0	Retaining bracket complete	1.000	ST				
15	6.321-154.0	Push button D 8	1.000	ST			VERSION 1	WITHOUT THREAD
15	5.034-930.0	Button retaining bracket	1.000	ST			VERSION 2	WITH THREAD
16	7.343-300.0	Lock washer 7-A2 DIN 6799	2.000	ST				
17	6.343-132.0	Lock washer 8	3.000	ST				
18	7.303-107.0	Screw 5x16 -10.9-P2R (K-In6Rd)	7.000	ST				
19	7.311-224.0	Hexagon nut M 8-04-A2E ISO 4035	1.000	ST				
20	5.007-007.0	Plate	1.000	ST				
21	7.303-386.0	Sheet metal screw	2.000	ST				

25 Handhold BR 530

POS	Article no.	Description	Quantity	Unit	Serial number from	Serial number to	Remark	Foot note text
		ST2,2X13,0-ST-A2E ISO						
22	7.312-280.0	Washer 3 -200HV- A2E ISO7093-1	2.000	ST				
23	7.306-090.0	Screw M6x16 -8.8-R3R (In6Rd)	1.000	ST				
24	5.115-860.0	Washer	1.000	ST				
25	5.048-878.0	Sheet metal component	1.000	ST				
26	6.643-145.0	Label earthing	1.000	ST				
27	5.048-904.0	Sheet metal component	1.000	ST				
28	7.312-163.0	Toothed lock washer A4,3-FST-PH DIN 679	1.000	ST				
29	7.303-135.0	Sheet metal screw ST4,2X 6,5-ST-A2R (IN	1.000	ST				
30	7.306-089.0	Screw M6x12 -8.8-R2R (In6Rd)	1.000	ST				
31	6.330-011.0	Extension spring	1.000	ST				
43	6.630-061.0	Micro switch	1.000	ST		47201		
43	4.744-161.0	Micro switch	1.000	ST	47202			
44	6.642-003.0	Insulating hose 4	1.000	M				TO ORDER AS CUT GOODS



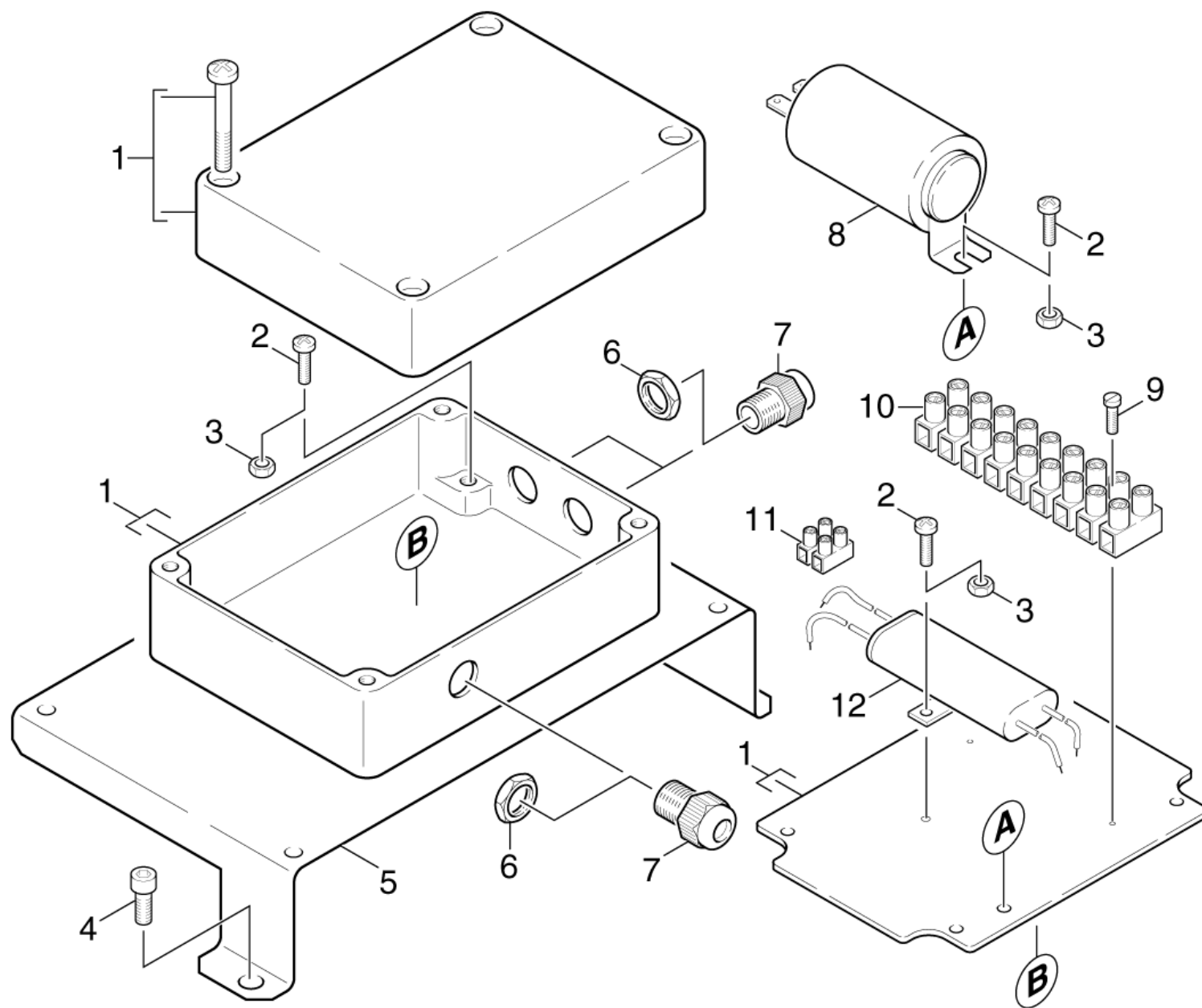
## 30 Chassis BR 530

POS	Article no.	Description	Quantity	Unit	Serial number from	Serial number to	Foot note text
4	7.306-043.0	Cylinder head screw M8x30 -8.8-A2E ISO	2.000	ST		13376	VERSION 1
4	7.306-075.0	Cylinder head screw M 8x 40-8.8-A2E ISO	2.000	ST	13377		VERSION 2+3
5	7.312-277.0	Washer 8-200HV-A2E ISO7093-1	4.000	ST			
6	5.110-777.0	Sleeve	2.000	ST	13377		VERSION 2+3
6	5.110-680.0	Sleeve	2.000	ST		13376	VERSION 1
7	7.311-004.0	Hexagon nut M8 -8-A3E ISO 4032	2.000	ST			
8	6.343-122.0	Lock washer	2.000	ST		13376	VERSION 1
9	5.105-261.0	Axle	1.000	ST		13376	VERSION 1
10	4.044-002.0	Holder	1.000	ST		13376	VERSION 1
11	4.058-087.0	Carrier suction bar	1.000	ST			VERSION 2+3
12	7.312-008.0	Washer 12-200HV-A3E ISO 7090	1.000	ST			VERSION 1
13	7.311-429.0	Hexagon nut M12-04-A2E ISO 10511	1.000	ST			VERSION 1
14	5.115-255.0	Washer	2.000	ST			VERSION 1
15	6.435-324.0	Wheel D.200	2.000	ST			VERSION 1
16	6.435-301.0	Wheel cap neutrally	2.000	ST			
17	7.343-007.0	Locking ring 20x1,2-FST-RF DIN 471	2.000	ST			VERSION 1
18	7.312-017.0	Washer 8-A2 ISO 7089	2.000	ST			
20	7.306-090.0	Screw M6x16 -8.8-R3R (In6Rd)	2.000	ST			
21	7.312-003.0	Washer 6 -200HV-A3E ISO 7090	8.000	ST			
22	7.311-067.0	Hexagon nut M 6-A2-70 ISO 4032	2.000	ST			
23	5.332-206.0	Helical spring	1.000	ST			
28	6.368-295.0	Protecting cap	2.000	ST			
29	5.031-554.0	Covering cap	1.000	ST			
30	7.312-057.0	Washer 16 -A2 ISO 7090	1.000	ST			VERSION 2
31	7.343-206.0	Lock washer 12-2.1030 DIN 6799	1.000	ST			VERSION 2
42	5.115-493.0	Washer	1.000	ST			VERSION 3



## 30 Chassis BR 530

POS	Article no.	Description	Quantity	Unit	Serial number from	Serial number to	Foot note text
43	7.343-005.0	Locking ring 16x1-FST-PHR DIN 471	1.000	ST			VERSION 3
44	2.850-322.0	Individual parts	1.000	ST			
45	5.115-608.0	Washer	2.000	ST			VERSION 2
46	6.435-356.0	Wheel D200	2.000	ST			OIL RESISTANT
47	7.343-004.0	Locking ring 15x1-FST-PHR DIN 471	2.000	ST			
48	4.044-010.0	Holder	1.000	ST	13377		



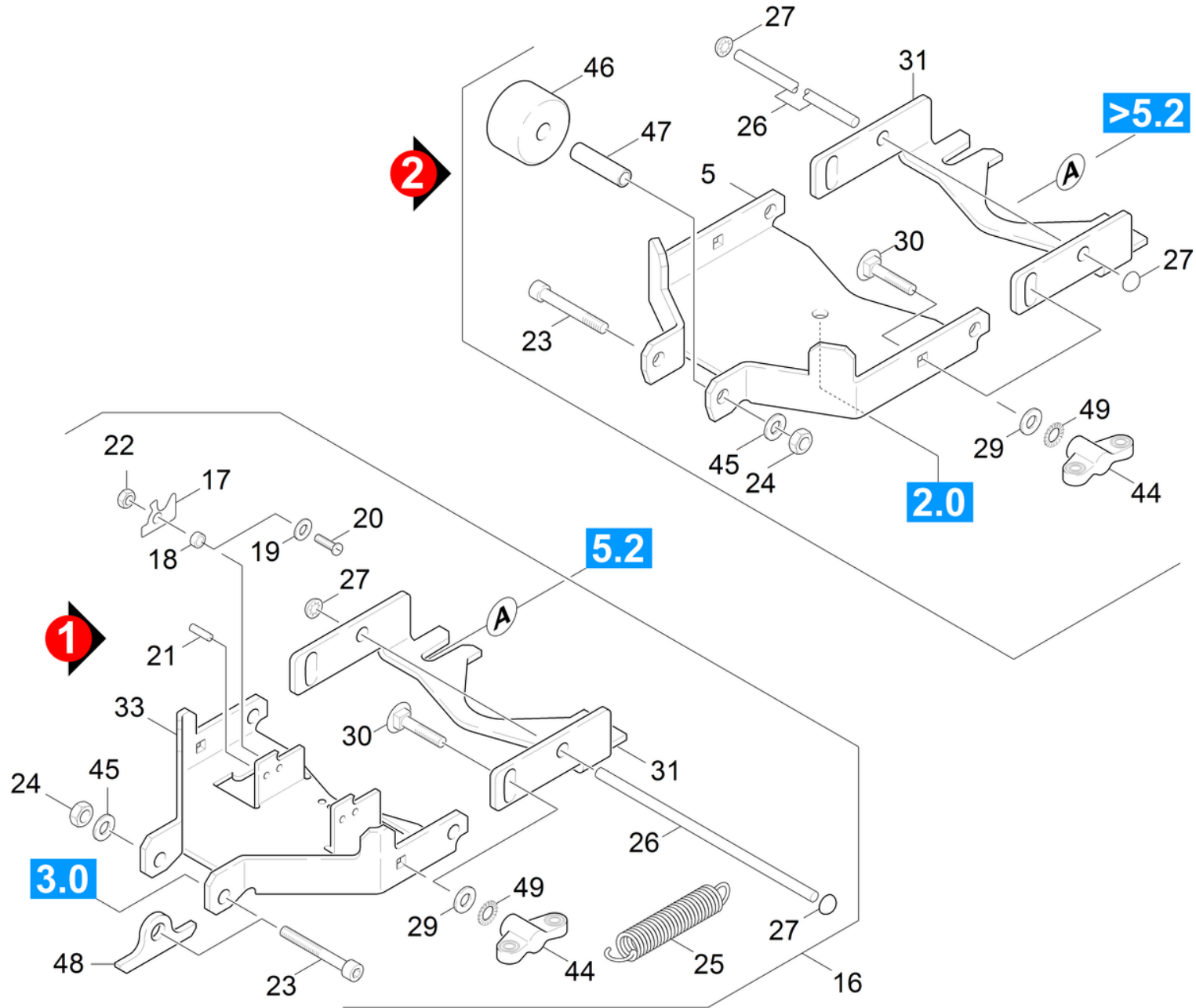
## 40 Switch box 230 V

POS	Article no.	Description	Quantity	Unit	Remark	Foot note text
1	6.601-321.0	Chest and mounting plate HOCHDRUCKPORTAL	1.000	ST		
2	7.306-057.0	Screw M4x10 -8.8-R2R (In6Rd)	4.000	ST		
3	7.311-001.0	Hexagon nut M4 -8-A2E ISO 4032	4.000	ST		
4	7.306-119.0	Cylinder head screw M8x12 -A2-70 ISO 47	3.000	ST		
5	5.044-095.0	Holder storage cabinet	1.000	ST		
6	6.641-367.0	Locknut PG11	3.000	ST		
7	6.641-357.0	Cable gland PG11	3.000	ST		
8	6.661-215.0	Capacitor	1.000	ST	*EUR / 20MF	
8	6.661-141.0	Capacitor 16MF	1.000	ST	*BR / 16MF	
9	6.303-262.0	Oval head screw 2,9X 16	2.000	ST		
10	6.643-693.0	Strip terminal nine-pole	1.000	ST		
11	6.643-010.0	Strip terminal 12	1.000	ZST		ORDER ACCORDING TO CONSUMPTION
12	6.661-112.0	Anti-interference capacitor	1.000	ST		

50 Suction mechanism BD 530 BAT

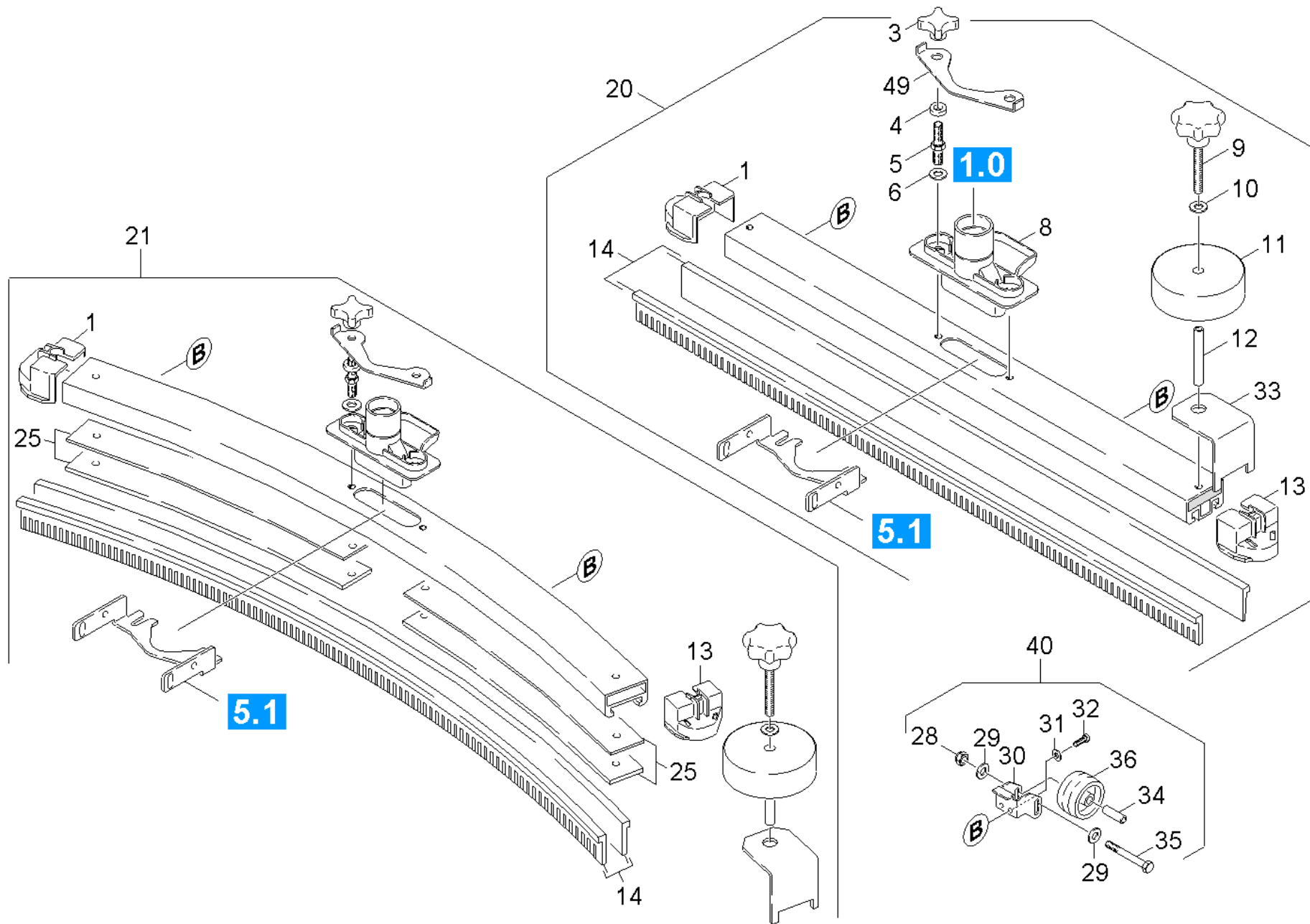
---

<b>POS</b>	<b>Description</b>	<b>Quantity</b>	<b>Unit</b>	<b>Foot note text</b>
51	Bracket suction bar	1.000	ST	
52	Suction bar	1.000	ST	VERSION 1
53	Suction bar	1.000	ST	VERSION 2
54	Suction bar	1.000	ST	VERSION 3



## 51 Bracket suction bar

POS	Article no.	Description	Quantity	Unit	Serial number from	Serial number to
5	5.044-379.0	Holder suction bar	1.000	ST	35012	
16	4.777-033.0	Suction bar suspension only for replacem	1.000	ST		35011
17	5.031-493.0	Moulded part CHH	1.000	ST		35011
18	5.110-687.0	Sleeve	1.000	ST		35011
19	7.312-067.0	Washer 4-A2 ISO 7089	1.000	ST		35011
20	7.306-206.0	Screw M4x10 -A2-70 ISO 14583	1.000	ST		35011
21	7.314-949.0	Spring pin 4x14-1.4310 ISO 8752	1.000	ST		35011
22	7.311-064.0	Hexagon nut M 4-A2-70 ISO 4032	1.000	ST		35011
23	7.306-151.0	Cylinder head screw M8x65 -8.8-A2E ISO4	1.000	ST		
24	7.311-427.0	Hexagon nut M8 -04-A2E ISO 10511	1.000	ST		
25	6.330-011.0	Extension spring	1.000	ST		35011
26	5.107-202.0	Bar	1.000	ST		
27	6.343-132.0	Lock washer 8	2.000	ST		
29	7.312-292.0	Washer 6 -A2 ISO 7093-1	2.000	ST		
30	7.303-139.0	Saucer-head screw M6x20 -A2 DIN 603	2.000	ST		
31	5.048-234.0	Rocker suction bar	1.000	ST		
33	5.044-162.0	Holder suction bar	1.000	ST		35011
44	6.310-180.0	Wing nut M6	2.000	ST		
45	7.312-017.0	Washer 8-A2 ISO 7089	1.000	ST		
46	5.435-004.0	Roller D40	1.000	ST		
47	5.112-633.0	Bush	1.000	ST		
48	5.031-834.0	Moulded part only for replacement	1.000	ST		35011
49	7.312-020.0	Serrated lock washer A6,4-1.4310 DIN679	2.000	ST		



## 52 Suction bar

POS	Article no.	Description	Quantity	Unit	Foot note text
1	5.031-482.0	End piece right	2.000	ST	
3	6.321-133.0	Star handle	2.000	ST	
4	7.312-080.0	Washer 10-C -100HV-tZn DIN 7989-1	2.000	ST	
5	5.308-057.0	Threaded bolt	2.000	ST	
6	7.312-277.0	Washer 8-200HV-A2E ISO7093-1	2.000	ST	
8	5.031-464.0	Suction nipple	1.000	ST	
9	6.321-243.0	Star grip stainless steel D50x48	2.000	ST	
10	7.312-004.0	Washer 8 -200HV-A3E ISO 7090	2.000	ST	
11	5.515-096.0	Roller	2.000	ST	
12	5.029-469.0	Tube	2.000	ST	
13	5.031-465.0	End piece left	1.000	ST	
14	6.273-185.0	Rubber lip set	1.000	ZSA	STANDARD
14	6.273-168.0	Rubber lip set oil resistant	1.000	ZSA	OIL RESISTANT
20	7.777-999.0	Stockpiling discontinued	1.000	ST	
21	7.777-999.0	Stockpiling discontinued	1.000	ST	
25	5.401-249.0	Insert curved	1.000	ST	
28	7.311-422.0	Hexagon nut M 6-1.4305 ISO 10511	2.000	ST	
29	7.312-026.0	Washer 6 -A2 ISO 7090	4.000	ST	
30	5.044-304.0	Holder roller	2.000	ST	
31	7.312-058.0	Washer 5 -A2 ISO 7090	4.000	ST	
32	7.303-037.0	Screw M5x10 -St-P2R (In6Rd)	4.000	ST	
33	5.017-136.0	Angle	2.000	ST	
34	5.105-245.0	Axle	2.000	ST	
35	7.304-550.0	Hexagonal head screw M 6x45-A4-70 ISO 4	2.000	ST	
36	6.435-401.0	Wheel D54	2.000	ST	
40	2.639-561.0	Add-on kit support wheels suction bar	1.000	ST	
49	5.007-217.0	Plate	1.000	ST	



40 Add-on kit support wheels suction bar (2.639-561.0)

---

POS	Article no.	Description	Quantity	Unit
1	0.082-417.0	Spare parts list support wheels	1.000	ST
<b>Item text2:</b> 26395610				

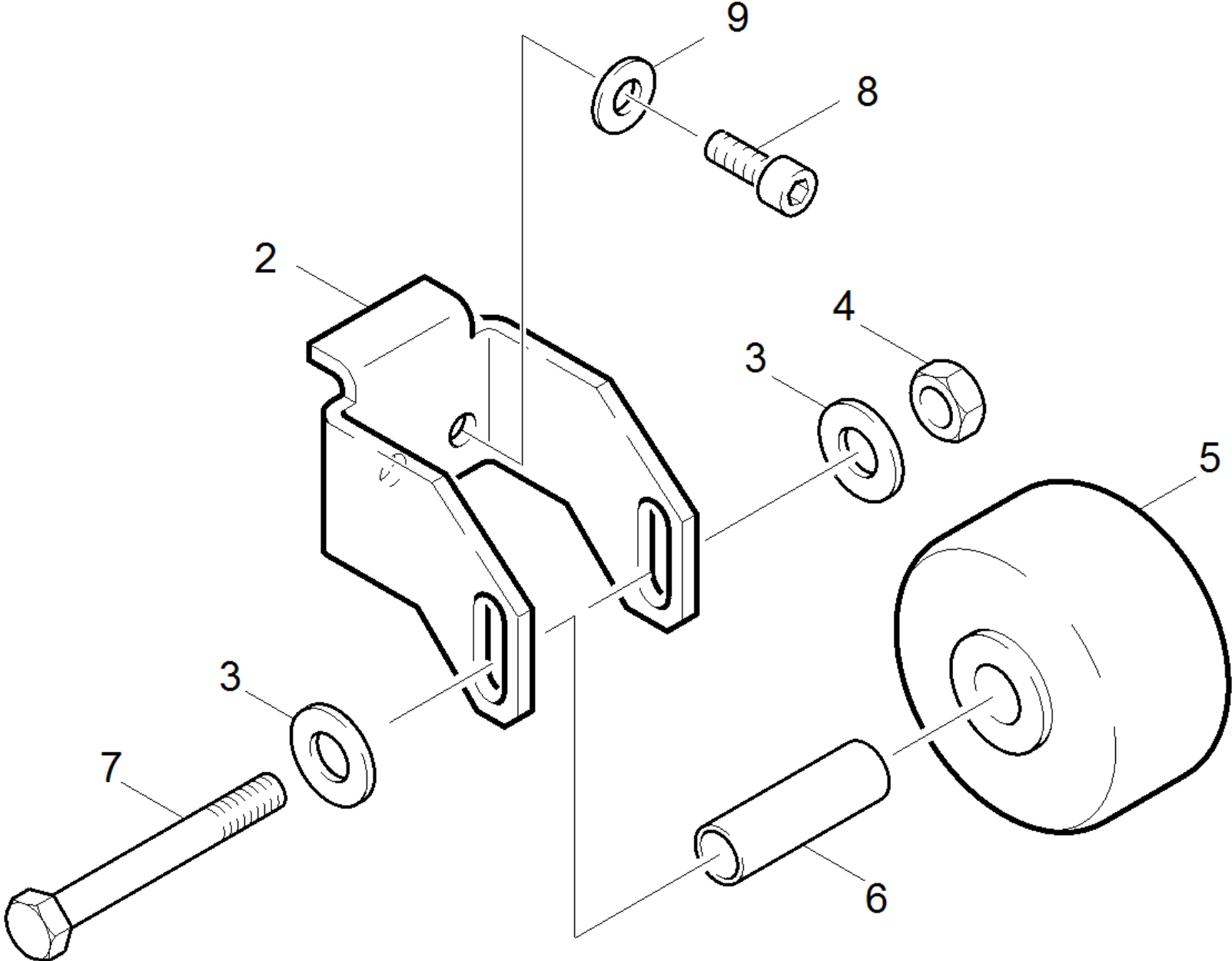
---

1 Spare parts list support wheels (0.082-417.0)

---

POS	Description	Quantity	Unit
10	Support wheels	1.000	ST

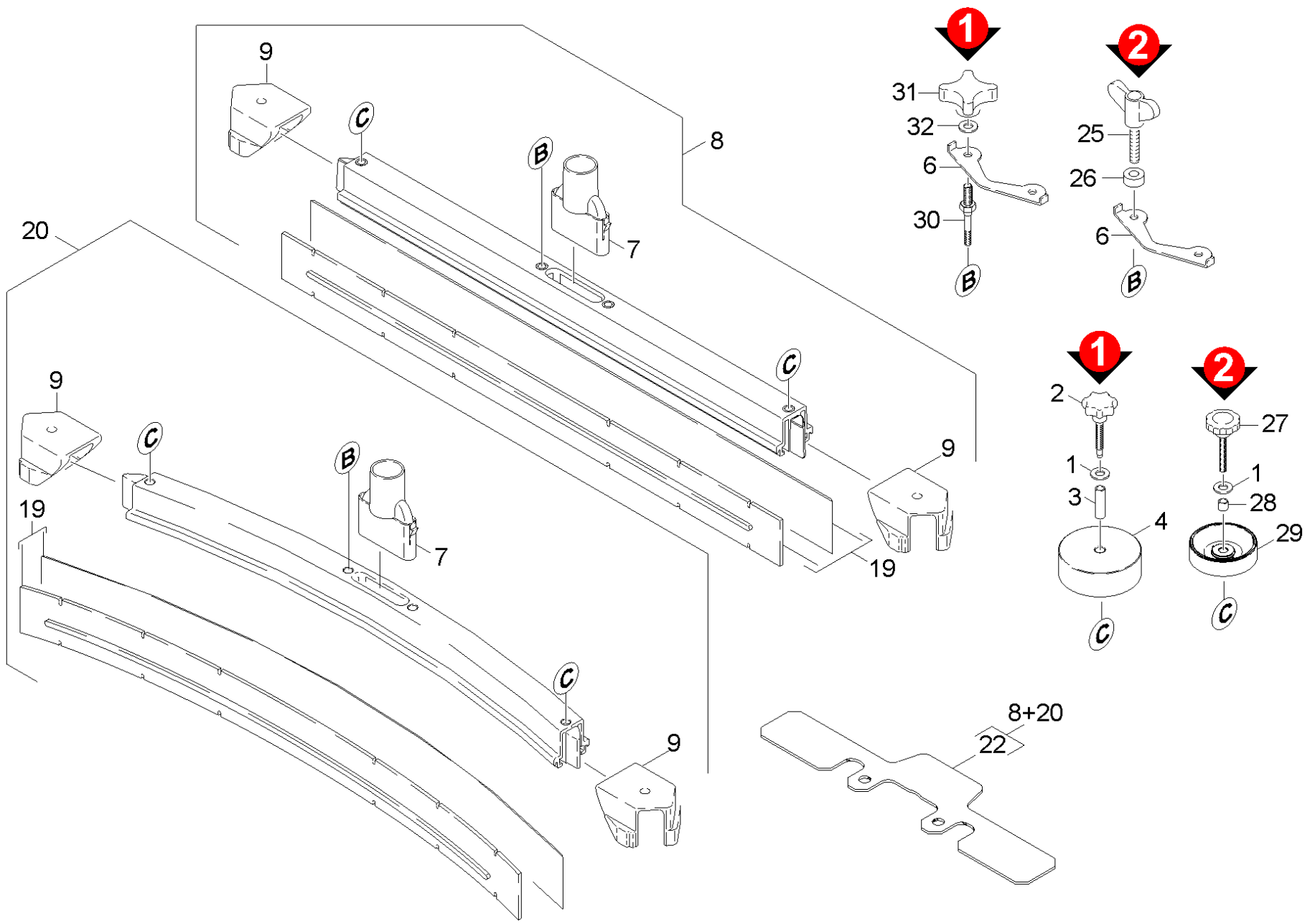
---



## 10 Support wheels

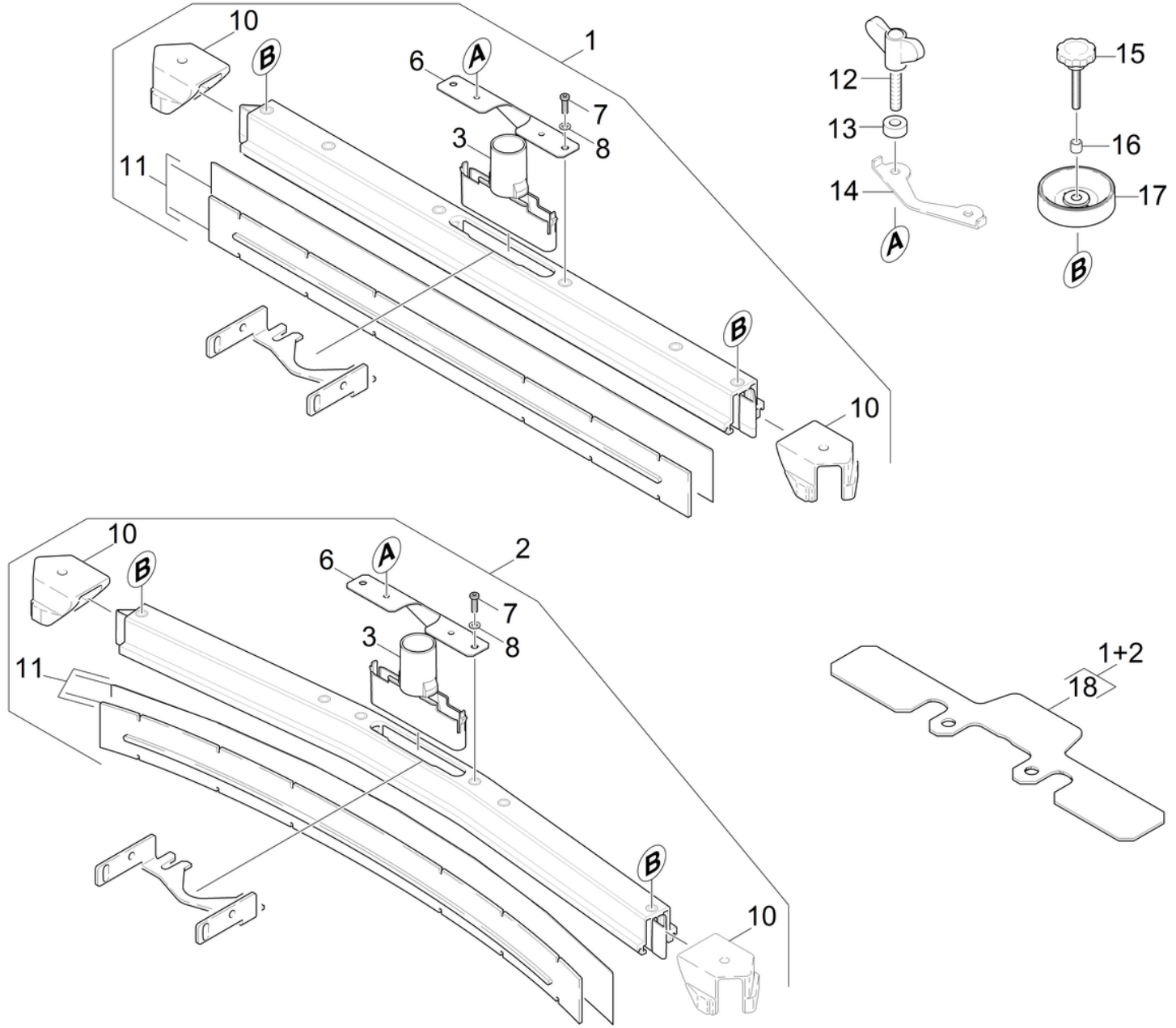
---

<b>POS</b>	<b>Article no.</b>	<b>Description</b>	<b>Quantity</b>	<b>Unit</b>
2	5.044-304.0	Holder roller	2.000	ST
3	7.312-026.0	Washer 6 -A2 ISO 7090	4.000	ST
4	7.311-422.0	Hexagon nut M 6-1.4305 ISO 10511	2.000	ST
5	6.435-401.0	Wheel D54	2.000	ST
6	5.105-320.0	Axle	2.000	ST
7	7.306-199.0	Screw M 6x50-A2-70 (IN6RD)	2.000	ST
8	7.303-037.0	Screw M5x10 -St-P2R (In6Rd)	4.000	ST
9	7.312-058.0	Washer 5 -A2 ISO 7090	4.000	ST



## 53 Suction bar

POS	Article no.	Description	Quantity	Unit	Remark	Foot note text
1	7.312-004.0	Washer 8 -200HV-A3E ISO 7090	3.000	ST		
2	6.321-243.0	Star grip stainless steel D50x48	2.000	ST		VERSION 1
3	5.094-050.0	Tube	2.000	ST		VERSION 1
4	5.515-096.0	Roller	2.000	ST		VERSION 1
6	5.007-619.0	Plate suction bar	1.000	ST		STAINLESS STEEL CONSTRUCTION
6	5.007-217.0	Plate	1.000	ST		
7	5.033-601.0	Suction nipple	1.000	ST	L = 150mm	
7	5.031-989.0	Suction nipple	1.000	ST	L = 90mm	
8	4.777-306.0	Suction bar straight 850 AB oLR	1.000	ST		SRAIGHT DESIGN
9	2.885-294.0	End piece left / right spare parts set	1.000	ST		
19	6.273-213.0	Rubber lip set standard	1.000	ZSA		STANDARD
19	6.273-229.0	Rubber lip set anti stripe oil resistant	1.000	ST		ANTI-STRIP, OIL RESISTANT
19	6.273-207.0	Rubber lip set oil resistant BR-BD530,55	1.000	ZSA		OIL RESISTANT
20	4.777-316.0	Suction bar curved 850 AB oLR	1.000	ST		CURVED DESIGN
22	5.128-339.0	Additional weight suction bar	1.000	ST		
25	5.305-296.0	Wing screw M8x40 VA	2.000	ST	VERSION 2	STAINLESS STEEL CONSTRUCTION
25	5.305-286.0	Wing screw M8x	2.000	ST	VERSION 2	
26	5.112-810.0	Sleeve VA	2.000	ST	VERSION 2	STAINLESS STEEL CONSTRUCTION
26	5.112-748.0	Sleeve	2.000	ST	VERSION 2	
27	6.321-239.0	Star grip VA Ø50x43	2.000	ST	VERSION 2	STAINLESS STEEL CONSTRUCTION
28	5.094-231.0	Sleeve suction bar in VA	2.000	ST	VERSION 2	STAINLESS STEEL CONSTRUCTION
29	5.515-267.0	Deflector roll	2.000	ST	VERSION 2	
30	5.308-064.0	Threaded bolt	2.000	ST		VERSION 1
31	6.321-133.0	Star handle	2.000	ST		VERSION 1
32	7.312-066.0	Washer 10 -A2 ISO 7090	2.000	ST		VERSION 1



## 54 Suction bar

POS	Article no.	Description	Quantity	Unit	Foot note text
1	4.777-406.0	Suction bar straight 850mm	1.000	ST	
2	4.777-416.0	Suction bar curved 850mm	1.000	ST	
3	5.033-601.0	Suction nipple	1.000	ST	
6	5.100-559.0	Suction bar support plate	1.000	ST	
7	7.306-142.0	Cylinder head screw M 8x25-A4-70 ISO 47	1.000	ST	
8	7.312-017.0	Washer 8-A2 ISO 7089	1.000	ST	
10	2.885-294.0	End piece left / right spare parts set	1.000	ST	
11	6.273-229.0	Rubber lip set anti stripe oil resistant	1.000	ST	ANTI-STRIP, OIL RESISTANT
11	6.273-290.0	BLADES FOR TEXTURED FLOORS	1.000	ST	CLOSED, OIL RESISTANT
11	6.273-213.0	Rubber lip set standard	1.000	ZSA	STANDARD
11	6.273-207.0	Rubber lip set oil resistant BR-BD530,55	1.000	ZSA	OIL RESISTANT
12	5.305-296.0	Wing screw M8x40 VA	2.000	ST	
13	5.112-810.0	Sleeve VA	2.000	ST	
14	5.007-217.0	Plate	1.000	ST	
15	6.321-239.0	Star grip VA Ø50x43	2.000	ST	
16	5.094-231.0	Sleeve suction bar in VA	2.000	ST	
17	5.515-346.0	Deflector roll suction bar D120	2.000	ST	
18	5.128-339.0	Additional weight suction bar	1.000	ST	



1 Suction bar straight 850mm (4.777-406.0)

---

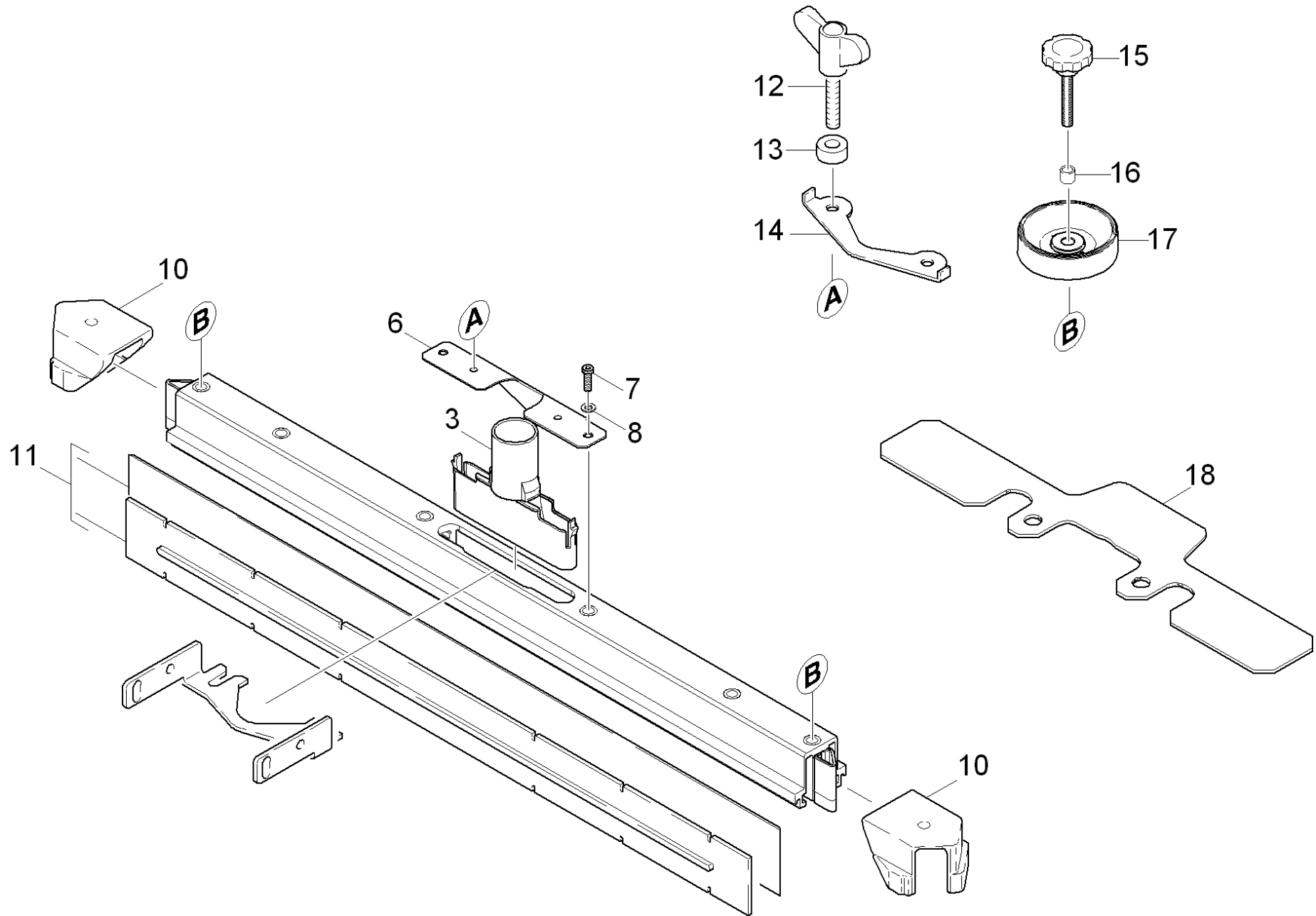
<b>POS</b>	<b>Article no.</b>	<b>Description</b>	<b>Quantity</b>	<b>Unit</b>
600	5.971-725.0	Spare parts list suction bar straight 85	1.000	ST

600 Spare parts list suction bar straight 85 (5.971-725.0)

---

POS	Description	Quantity	Unit
10	Suction bar straight 850mm	1.000	ST

---



## 10 Suction bar straight 850mm

POS	Article no.	Description	Quantity	Unit	Foot note text
3	5.033-601.0	Suction nipple	1.000	ST	
6	5.100-559.0	Suction bar support plate	1.000	ST	
7	7.306-142.0	Cylinder head screw M 8x25-A4-70 ISO 47	1.000	ST	
8	7.312-017.0	Washer 8-A2 ISO 7089	1.000	ST	
10	2.885-294.0	End piece left / right spare parts set	1.000	ST	
11	6.273-290.0	BLADES FOR TEXTURED FLOORS	1.000	ST	CLOSED, OIL RESISTANT
11	6.273-229.0	Rubber lip set anti stripe oil resistant	1.000	ST	ANTI-STRIP, OIL RESISTANT
11	6.273-213.0	Rubber lip set standard	1.000	ZSA	STANDARD
11	6.273-207.0	Rubber lip set oil resistant BR-BD530,55	1.000	ZSA	OIL RESISTANT
12	5.305-296.0	Wing screw M8x40 VA	2.000	ST	
13	5.112-810.0	Sleeve VA	2.000	ST	
14	5.007-217.0	Plate	1.000	ST	
15	6.321-239.0	Star grip VA Ø50x43	2.000	ST	
16	5.094-231.0	Sleeve suction bar in VA	2.000	ST	
17	5.515-346.0	Deflector roll suction bar D120	2.000	ST	
18	5.128-339.0	Additional weight suction bar	1.000	ST	

2 Suction bar curved 850mm (4.777-416.0)

---

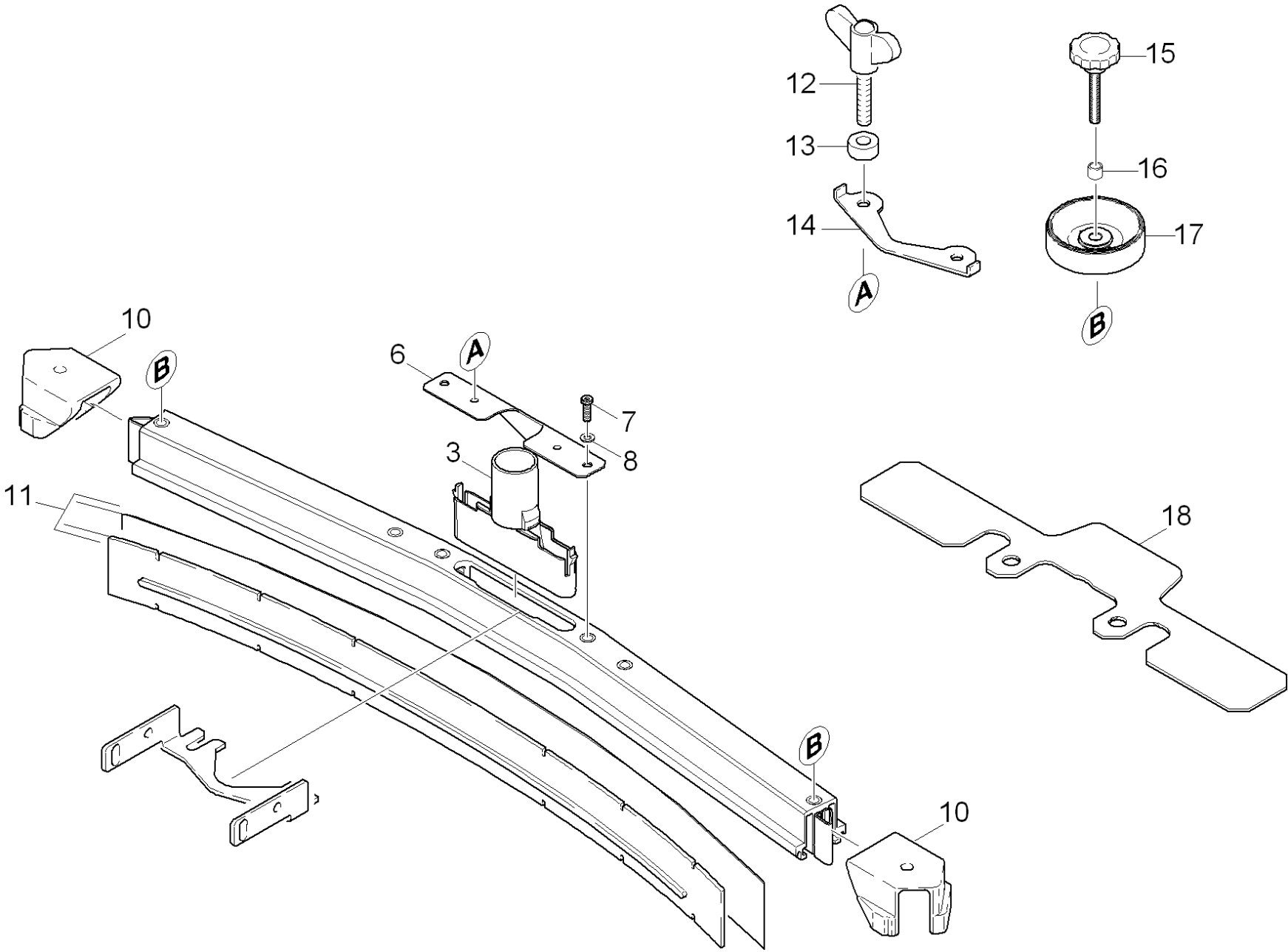
<b>POS</b>	<b>Article no.</b>	<b>Description</b>	<b>Quantity</b>	<b>Unit</b>
600	5.971-726.0	Spare parts list suction bar curved 850m	1.000	ST

600 Spare parts list suction bar curved 850m (5.971-726.0)

---

<b>POS</b>	<b>Description</b>	<b>Quantity</b>	<b>Unit</b>
10	Suction bar curved 850mm	1.000	ST

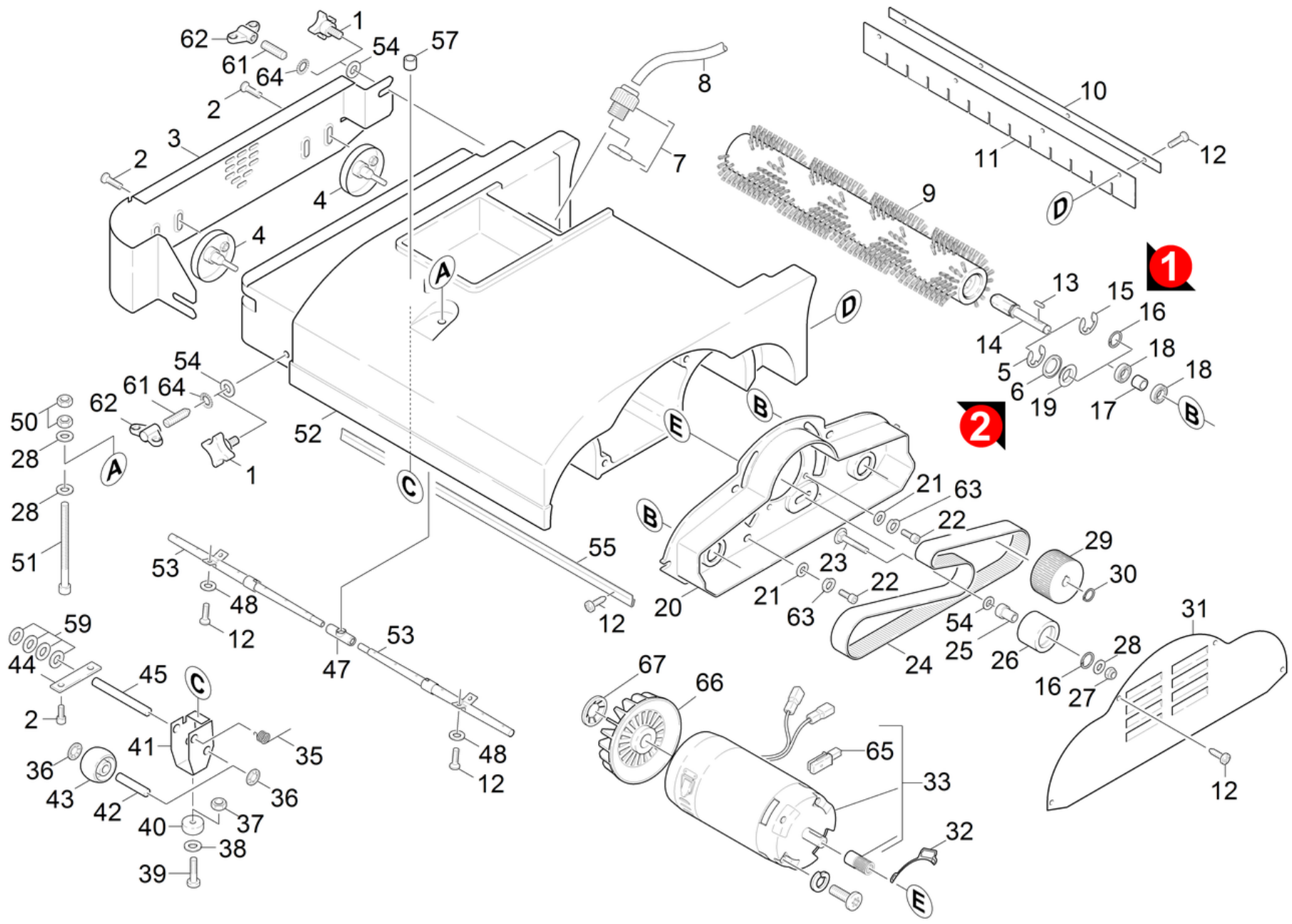
---



## 10 Suction bar curved 850mm

POS	Article no.	Description	Quantity	Unit	Foot note text
3	5.033-601.0	Suction nipple	1.000	ST	
6	5.100-559.0	Suction bar support plate	1.000	ST	
7	7.306-142.0	Cylinder head screw M 8x25-A4-70 ISO 47	1.000	ST	
8	7.312-017.0	Washer 8-A2 ISO 7089	1.000	ST	
10	2.885-294.0	End piece left / right spare parts set	1.000	ST	
11	6.273-290.0	BLADES FOR TEXTURED FLOORS	1.000	ST	CLOSED, OIL RESISTANT
11	6.273-229.0	Rubber lip set anti stripe oil resistant	1.000	ST	ANTI-STRIP, OIL RESISTANT
11	6.273-213.0	Rubber lip set standard	1.000	ZSA	STANDARD
11	6.273-207.0	Rubber lip set oil resistant BR-BD530,55	1.000	ZSA	OIL RESISTANT
12	5.305-296.0	Wing screw M8x40 VA	2.000	ST	
13	5.112-810.0	Sleeve VA	2.000	ST	
14	5.007-217.0	Plate	1.000	ST	
15	6.321-239.0	Star grip VA Ø50x43	2.000	ST	
16	5.094-231.0	Sleeve suction bar in VA	2.000	ST	
17	5.515-267.0	Deflector roll	2.000	ST	
18	5.128-339.0	Additional weight suction bar	1.000	ST	





## 60 Power brush -BR

POS	Article no.	Description	Quantity	Unit	Serial number from	Serial number to	Remark	Foot note text
1	6.321-054.0	Star handle M8X16	2.000	ST		35011		
2	7.306-191.0	Screw M6x10 -A2-70 (In6Rd)	8.000	ST				
3	4.044-064.0	Holder-up	1.000	ST				
4	4.038-493.0	Sheet metal component	2.000	ST				
5	6.343-250.0	Locking ring 28x1,2 JL	2.000	ST	66578			VERSION 2
6	5.114-521.0	Spacer ring	2.000	ST	66578			VERSION 2
7	6.647-714.0	Cable gland M20x1,5	1.000	ST				
8	6.642-011.0	Insulating hose 10	1.000	M				TO ORDER AS CUT GOODS
9	5.762-210.0	Roller brush green ( old colour grey )	2.000	ST				
	<b>Item text1:</b> / 1.127-221.0 / -421.0 / -807.0							
9	5.762-211.0	Roller brush white (old colour black )	2.000	ST				
	<b>Item text1:</b> / 1.127-221.0 / -421.0 / -807.0							
9	5.762-264.0	Roller brush black ( old colour grey )	2.000	ST				
	<b>Item text1:</b> / 1.127-121.0 / -321.0 / -805.0							
	<b>Item text2:</b> / -809.0							
9	5.762-209.0	Roller brush orange (old colour red )	2.000	ST				
	<b>Item text1:</b> / 1.127-221.0 / -421.0 / -807.0							
9	5.762-263.0	Roller brush black ( old colour grey )	2.000	ST				
	<b>Item text1:</b> / 1.127-221.0 / -241.0							
9	5.762-008.0	Roller brush red	2.000	ST				STANDARD
	<b>Item text1:</b> / 1.127-121.0 / -321.0 / -683.0							
	<b>Item text2:</b> / -805.0 / -809.0							
9	5.762-170.0	Roller brush orange (old colour red )	2.000	ST				
	<b>Item text1:</b> / 1.127-121.0 / -321.0 / -683.0							
	<b>Item text2:</b> / -805.0 / -809.0							

## 60 Power brush -BR

POS	Article no.	Description	Quantity	Unit	Serial number from	Serial number to	Remark	Foot note text
9	5.762-171.0	Roller brush green ( old colour grey )	2.000	ST				
	<b>Item text1:</b> / 1.127-121.0 / -321.0 / -683.0							
	<b>Item text2:</b> / -805.0 / -809.0							
9	5.762-172.0	Roller brush white (old colour black )	2.000	ST				
	<b>Item text1:</b> / 1.127-121.0 / -321.0 / -683.0							
	<b>Item text2:</b> / -805.0 / -809.0							
9	5.762-208.0	Roller brush red ( old colour white )	2.000	ST				STANDARD
	<b>Item text1:</b> / 1.127-221.0 / -421.0 / -807.0							
10	5.003-984.0	Plate	1.000	ST				
	<b>Item text1:</b> / 1.127-221.0 / -421.0 / -807.0							
10	5.003-196.0	Plate	1.000	ST				
	<b>Item text1:</b> / 1.127-121.0 / -321.0 / -683.0							
	<b>Item text2:</b> / -805.0 / -809.0							
11	5.190-093.0	Strip XL	1.000	ST				
	<b>Item text1:</b> / 1.127-221.0 / -421.0 / -807.0							
11	5.190-057.0	Strip	1.000	ST				
	<b>Item text1:</b> / 1.127-121.0 / -321.0 / -683.0							
	<b>Item text2:</b> / -805.0 / -809.0							
12	7.303-104.0	Screw 5x16 -A2-70 (IN6RD)	14.000	ST				
13	7.318-007.0	Parallel key 4x4x16-C45R DIN 6885	2.000	ST				
14	5.100-191.0	Driveshaft BR 550/530	2.000	ST		66577		
14	5.103-038.0	Shaft hexagon BR 530	2.000	ST	66578			
15	7.343-304.0	Lock washer 15 -A2 DIN 6799	2.000	ST		66577		VERSION 1
16	7.343-151.0	Locking ring 28x1,2-FST-RF DIN 472	3.000	ST		66577		VERSION 1
17	5.116-101.0	Sleeve	2.000	ST	66578			

## 60 Power brush -BR

POS	Article no.	Description	Quantity	Unit	Serial number from	Serial number to	Remark	Foot note text
17	5.110-322.0	Sleeve	2.000	ST		66577		
18	6.401-363.0	Ball bearing	4.000	ST				
19	6.401-385.0	Ring Nilos D 28	2.000	ST	66578			VERSION 2
20	5.044-075.0	Retainer plate transmission	1.000	ST				
21	7.312-292.0	Washer 6 -A2 ISO 7093-1	10.000	ST				
22	7.306-031.0	Screw M 6x16-A2-70 DIN 7984	10.000	ST				
23	7.303-186.0	Saucer-head screw M8x40 -St-A0P DIN 603	1.000	ST				
24	6.348-376.0	Toothed belt HTD 843-3M-25-CXP111	1.000	ST				
25	5.110-678.0	Sleeve	1.000	ST				
26	4.250-083.0	Tension roller D = 33,5	1.000	ST				
27	7.311-427.0	Hexagon nut M8 -04-A2E ISO 10511	1.000	ST				
28	7.312-288.0	Washer 3,5 -200HV- A2E ISO7093-1	3.000	ST				
29	5.625-317.0	Belt pulley 59Z	2.000	ST				
30	7.343-003.0	Locking ring 12x1-Rf- St DIN 471	2.000	ST				
31	5.003-959.0	Cover plate	1.000	ST				
32	5.006-017.0	Holder plug	1.000	ST				
33	4.623-608.0	Motor 230V BR 530	1.000	ST				
	<b>Item text1:</b> / 1.127-121.0 / -221.0 / -321.0							
	<b>Item text2:</b> / -421.0 / -805.0 / -807.0 / -809.0							
33	4.623-428.0	Motor complete only for replacement 24V	1.000	ST			ATAS	
	<b>Item text1:</b> / 1.127-131.0 / -161.0 / -231.0 / -261.0							
33	4.623-512.0	Motor complete only for replacement 120	1.000	ST				
	<b>Item text1:</b> / 1.127-683.0							
35	5.335-035.0	Spiral spring	1.000	ST				
36	6.343-149.0	Quick-fastener	2.000	ST				

## 60 Power brush -BR

POS	Article no.	Description	Quantity	Unit	Serial number from	Serial number to	Remark	Foot note text
37	7.311-422.0	Hexagon nut M 6-1.4305 ISO 10511	1.000	ST				
38	7.312-073.0	Washer 8 -CuZn ISO 7092	1.000	ST				
39	7.306-193.0	Screw M6x16 -A2-70 (In6Rd)	1.000	ST				
40	5.031-519.0	Stand foot	1.000	ST				
41	5.052-043.0	Stand	1.000	ST				
42	5.105-266.0	Axle wheel	1.000	ST				
43	5.435-004.0	Roller D40	1.000	ST				
44	5.004-835.0	Strap	2.000	ST				
45	5.105-260.0	Axle	1.000	ST				
47	5.431-005.0	Pipe connection	1.000	ST				
48	7.312-282.0	Washer 5 -A2 ISO 7093-1	4.000	ST				
50	7.311-068.0	Hexagon nut M 8-A2-70 ISO 4032	3.000	ST				
51	7.304-033.0	Hexagonal head screw M 8X100-A4-70 ISO 4	1.000	ST				
52	5.060-691.0	Brush housing	1.000	ST				
		<b>Item text1:</b> / 1.127-221.0 / -421.0 / -807.0						
52	5.060-666.0	Brush housing	1.000	ST				
		<b>Item text1:</b> / 1.127-121.0 / -321.0 / -683.0						
		<b>Item text2:</b> / -805.0 / -809.0						
53	5.029-386.0	Tube water	2.000	ST				
53	5.029-317.0	Tube water	2.000	ST				
		<b>Item text1:</b> / 1.127-221.0 / -421.0 / -807.0						
54	7.312-289.0	Washer 8 -A2 ISO 7093-1	3.000	ST				
55	5.048-362.0	Sheet metal component	1.000	ST				
		<b>Item text1:</b> / 1.127-221.0 / -421.0 / -807.0						
55	5.048-187.0	Sheet metal component	1.000	ST				
		<b>Item text1:</b> / 1.127-121.0 / -321.0 / -683.0						

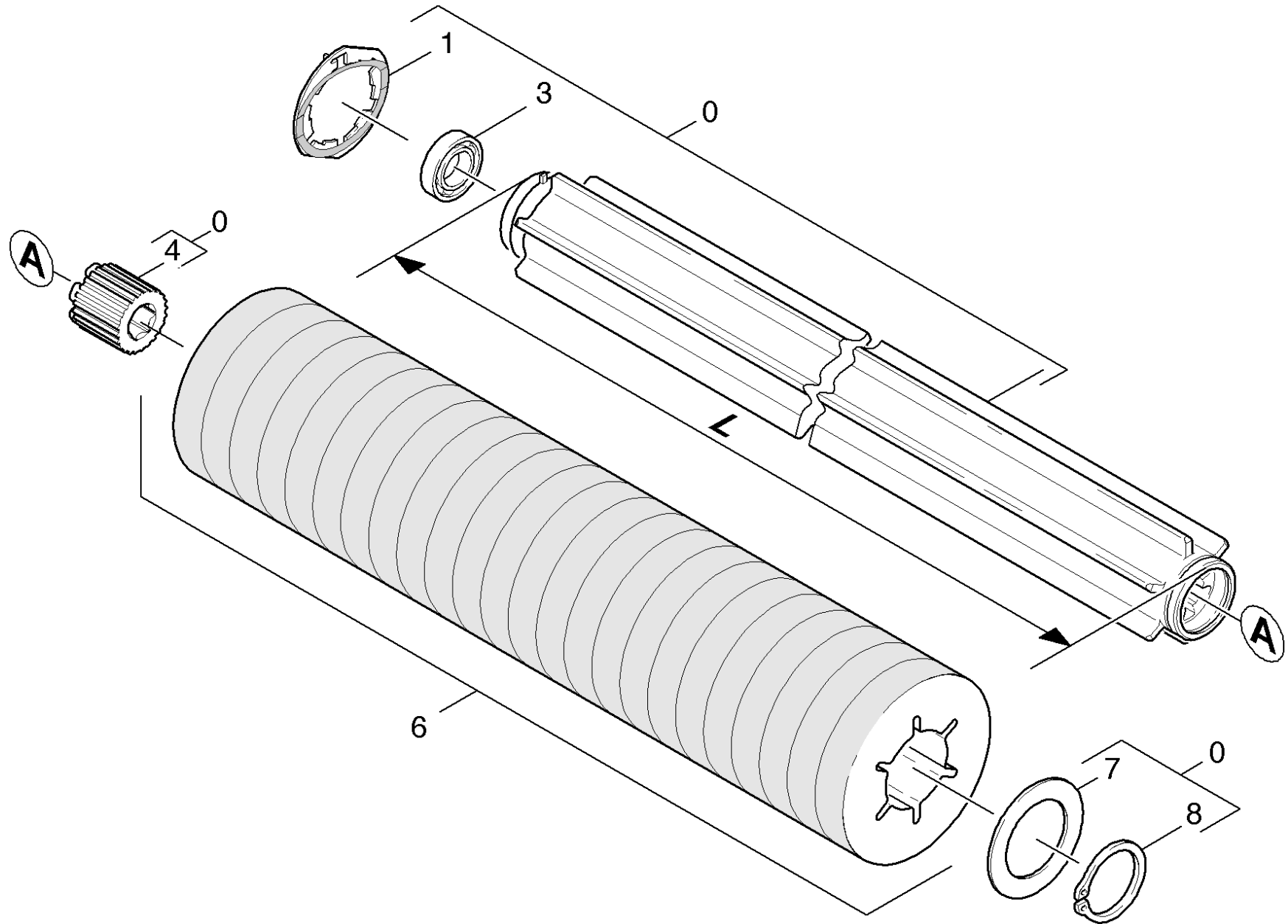
## 60 Power brush -BR

POS	Article no.	Description	Quantity	Unit	Serial number from	Serial number to	Remark	Foot note text
	Item text2: / -805.0 / -809.0							
57	6.347-093.0	Sleeve 8x1	1.000	ST				
59	7.312-074.0	Washer 10 -CuZn ISO 7092	4.000	ST				
61	7.307-356.0	Threaded pin M 8 x 30-A2-21H ISO 4029	2.000	ST	35012			
62	6.310-128.0	Wing nut M 8	2.000	ST	35012			
63	7.313-018.0	Spring washer B 6-1.4310 DIN 127	10.000	ST				
64	7.312-022.0	Serrated lock washer A8,4-1.4310 DIN679	2.000	ST				
65	6.610-026.0	Carbon brush set	1.000	ST			Hengye 24V	
65	6.610-239.0	Carbon brush set ATAS	1.000	ST			ATAS 24V	
66	6.613-025.0	Blower wheel	1.000	ST			ATAS 24V	
66	6.610-027.0	Blower wheel only for replacement Hengye	1.000	ST			Hengye 24V	
67	6.343-149.0	Quick-fastener	1.000	ST				

26 Tension roller D = 33,5 (4.250-083.0)

---

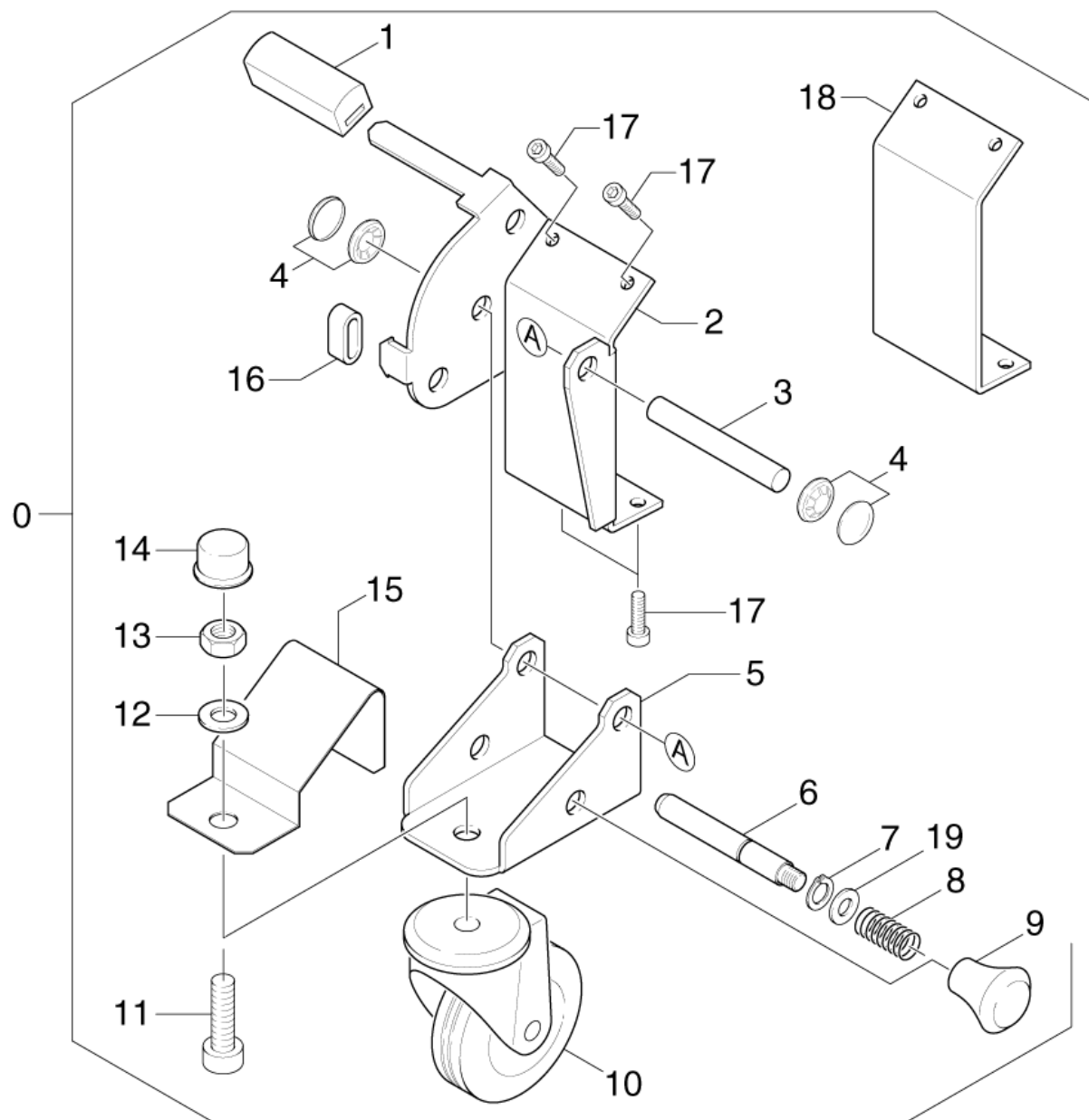
<b>POS</b>	<b>Article no.</b>	<b>Description</b>	<b>Quantity</b>	<b>Unit</b>
10	6.401-363.0	Ball bearing	2.000	ST





## 70 Pad roll

POS	Article no.	Description	Quantity	Unit	Remark
0	4.762-184.0	Roll pad BR 550 / BR 530	1.000	ST	L = 461 MM
		<b>Item text1:</b> / 1.127-121.0 /-321.0 /-331.0 /-361.0			
		<b>Item text2:</b> / -683.0			
0	4.762-214.0	Roll pad	1.000	ST	L = 530 MM
		<b>Item text1:</b> / 1.127-221.0 / -421.0 /-431.0 /-461.0			
1	4.115-003.0	Washer closure	1.000	ST	
3	7.401-169.0	Ball bearing 6201-2RS-WAELZLAGST DIN 625	1.000	ST	
4	5.112-719.0	Bush hexagon 17mm	1.000	ST	
6	6.369-733.0	Pad green with sleeve	1.000	ZSA	
		<b>Item text1:</b> //1.127-221.0 /421.0 /-803.0 /-807.0			
6	6.369-732.0	Pad yellow with sleeve	1.000	ZSA	
		<b>Item text1:</b> //1.127-221.0 /421.0 /-803.0 /-807.0			
6	6.369-734.0	Pad red with sleeve	1.000	ZSA	
		<b>Item text1:</b> //1.127-221.0 /421.0 /-803.0 /-807.0			
6	6.369-735.0	Pad white with sleeve	1.000	ZSA	
		<b>Item text1:</b> //1.127-221.0 /421.0 /-803.0 /-807.0			
6	6.369-730.0	Pad red with sleeve	1.000	ZSA	
		<b>Item text1:</b> //1.127-121.0 /-321.0 /683.0 /-687.0 /			
		<b>Item text2:</b> -801.0 /-805.0 /-809.0			
6	6.369-731.0	Pad white with sleeve	1.000	ZSA	
		<b>Item text1:</b> //1.127-121.0 /-321.0 /683.0 /-687.0 /			
		<b>Item text2:</b> -801.0 /-805.0 /-809.0			
6	6.369-728.0	Pad yellow with sleeve	1.000	ZSA	
		<b>Item text1:</b> //1.127-121.0 /-321.0 /683.0 /-687.0 /			
		<b>Item text2:</b> -801.0 /-805.0 /-809.0			
6	6.369-729.0	Pad green with sleeve	1.000	ZSA	
		<b>Item text1:</b> //1.127-121.0 /-321.0 /683.0 /-687.0 /			
		<b>Item text2:</b> -801.0 /-805.0 /-809.0			
7	5.005-266.0	Ronde	1.000	ST	
8	7.343-030.0	Locking ring 40x1,75-FST-RF DIN 471	1.000	ST	



## 80 Accessories carriage

POS	Article no.	Description	Quantity	Unit
0	2.639-807.0	Add-on kit carriage BR530	1.000	ST
1	5.321-457.0	Handhold	1.000	ST
2	4.044-021.0	Holder carriage	1.000	ST
3	5.105-336.0	Axle	1.000	ST
4	6.343-191.0	Quick-fastener	2.000	ST
5	5.044-445.0	Holder wheel	1.000	ST
6	5.317-001.0	Bolt	1.000	ST
7	7.343-300.0	Lock washer 7-A2 DIN 6799	1.000	ST
8	5.332-288.0	Helical spring	1.000	ST
9	6.321-001.0	Button M8	1.000	ST
10	6.435-061.0	Castor D 75	1.000	ST
11	7.306-234.0	Cylinder head screw M10x20-A4-70 ISO 47	1.000	ST
12	7.312-066.0	Washer 10 -A2 ISO 7090	1.000	ST
13	7.311-066.0	Hexagon nut M10-A2-70 ISO 4032	1.000	ST
14	6.368-354.0	Cap M 10	1.000	ST
15	7.777-999.0	Stockpiling discontinued	1.000	ST
16	5.442-982.0	Piece of tube	1.000	ST
17	7.303-107.0	Screw 5x16 -10.9-P2R (K-In6Rd)	4.000	ST
18	5.387-011.0	Template carriage	1.000	ST
19	7.362-003.0	Joint ring A10x13,5 -Cu DIN 7603	1.000	ST

Add-on kit carriage BR530 (2.639-807.0)

---

POS	Article no.	Description	Quantity	Unit
4	5.958-859.0	Spare parts list add-on kit carriage BR	1.000	ST
<b>Item text2:</b> 26398070				

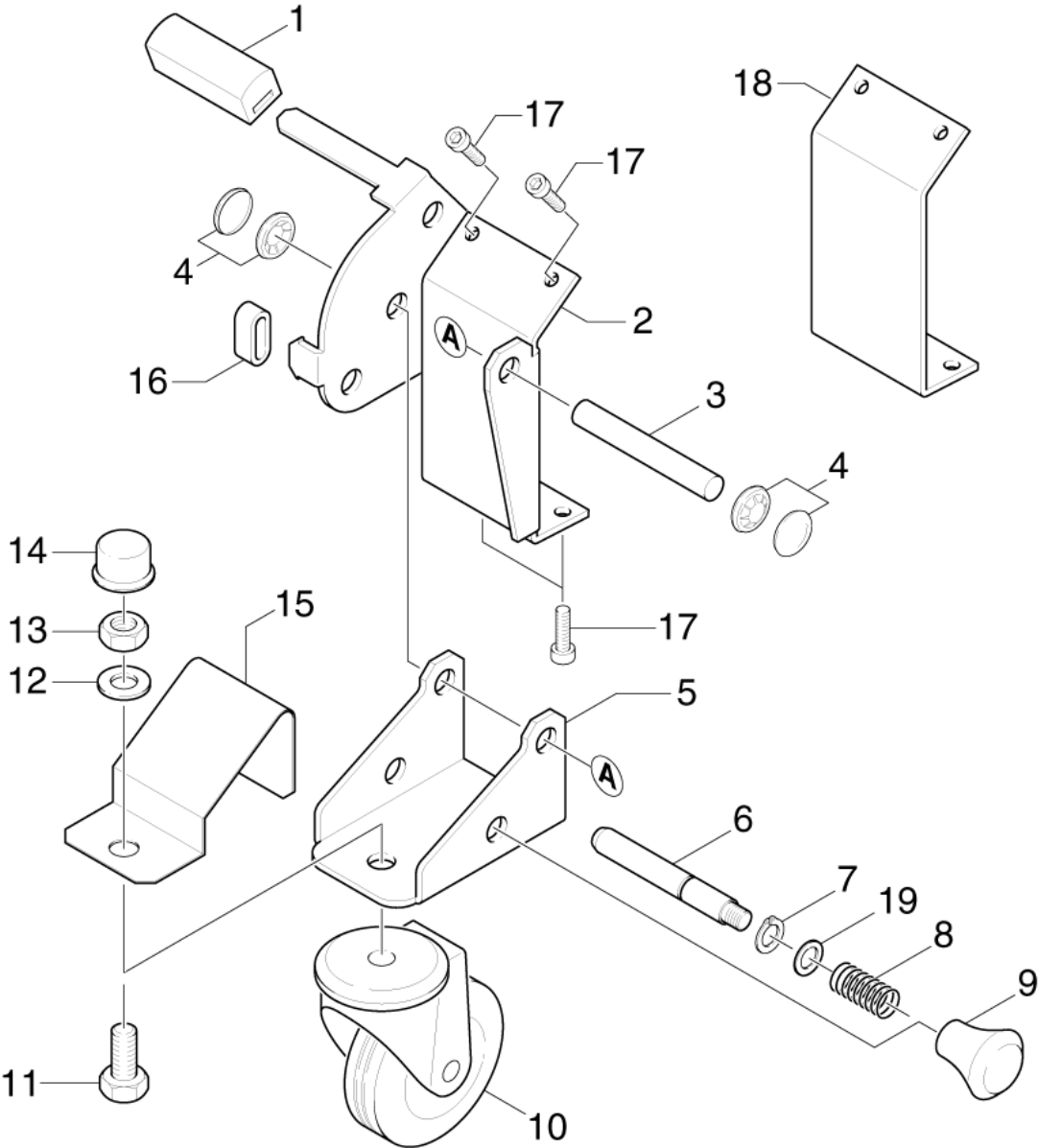
---

4 Spare parts list add-on kit carriage BR (5.958-859.0)

---

POS	Description	Quantity	Unit
10	Individual parts	1.000	ST

---



## 10 Individual parts

POS	Article no.	Description	Quantity	Unit
1	5.321-457.0	Handhold	1.000	ST
2	4.044-021.0	Holder carriage	1.000	ST
3	5.105-336.0	Axle	1.000	ST
4	6.343-191.0	Quick-fastener	2.000	ST
5	5.044-445.0	Holder wheel	1.000	ST
6	5.317-001.0	Bolt	1.000	ST
7	7.343-300.0	Lock washer 7-A2 DIN 6799	1.000	ST
8	5.332-288.0	Helical spring	1.000	ST
9	6.321-001.0	Button M8	1.000	ST
10	6.435-061.0	Castor D 75	1.000	ST
11	7.306-061.0	Cylinder head screw M10X 20-8.8-A2R ISO	1.000	ST
12	7.312-066.0	Washer 10 -A2 ISO 7090	1.000	ST
13	7.311-066.0	Hexagon nut M10-A2-70 ISO 4032	1.000	ST
14	6.368-354.0	Cap M 10	1.000	ST
15	7.777-999.0	Stockpiling discontinued	1.000	ST
16	5.442-982.0	Piece of tube	1.000	ST
17	7.303-112.0	Screw 6x20 -10.9-R2R (In6Rd)	4.000	ST
18	5.387-011.0	Template carriage	1.000	ST
19	7.362-003.0	Joint ring A10x13,5 -Cu DIN 7603	1.000	ST