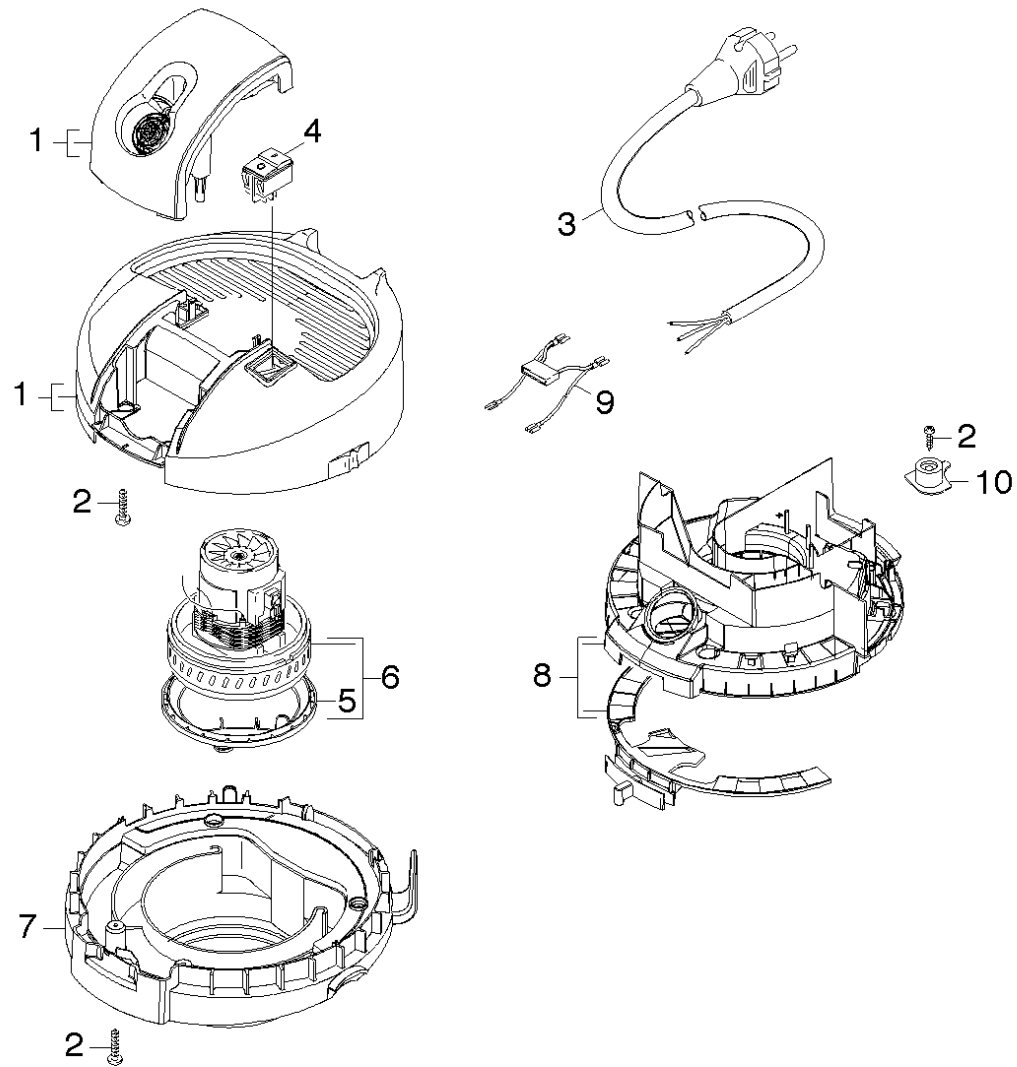


# 20 Vacuum motor

Home and Garden \ Vacuum cleaner \ Wet-/Dry vacuum cleanerwet \ A 2204 \*CN \ Spare parts list A 2204/2504/2500 \ Vacuum motor



## 20 Vacuum motor

Home and Garden \ Vacuum cleaner \ Wet-/Dry vacuum cleanerwet \ A 2204 \*CN \ Spare parts list A 2204/2504/2500 \ Vacuum motor



POS	Article no.	Description	Quantity	Unit
5	4.490-009.0	Bearing set fuer Motor (1.723-XXX)	1.000	ST
9	9.084-176.0	Cable and capacitor <b>Item text1:</b> //1.723-104.0 / -105.0	1.000	ST
9	9.084-165.0	Cable and capacitor A 2504 *EU (POKE-IN) <b>Item text1:</b> / 1.723-400.0 / -401.0 / -402.0 / -406.0 <b>Item text2:</b> / -407.0	1.000	ST
3	9.084-160.0	Cable H05V-F 2x0,75 A2204 *AU <b>Item text1:</b> / 1.723-103.0	1.000	ST
3	9.084-216.0	Cable H05V-F 2x0,75 A2204 *CN <b>Item text1:</b> /1.723-109.0	1.000	ST
3	9.084-154.0	Cable H05V-F 2X0,75 A2204 *EU <b>Item text1:</b> / 1.723-100.0 / -106.0 / -107.0 / -108.0 <b>Item text2:</b> / -400.0 / -406.0	1.000	ST
3	9.084-159.0	Cable H05V-F 2X0,75 A2204 *GB <b>Item text1:</b> / 1.723-102.0 / -120.0 / -402.0	1.000	ST
3	9.084-161.0	Cable with plug 2x16 AWG *MX/ *BR <b>Item text1:</b> //1.723-104.0 / -105.0	1.000	ST
3	9.084-304.0	Cord CH 2x0,75 6,5MT <b>Item text1:</b> / 1.723-101.0 / -121.0 / -401.0 / -407.0	1.000	ST
1	9.001-287.0	Housing	1.000	ST
7	9.012-166.0	Motor bracket	1.000	ST
8	9.011-966.0	Moulded part complete	1.000	ST
2	7.303-096.0	Screw 4x22 -ST-10.9-R2R (IN6RD)	8.000	ST
9	2.884-135.0	Spare part set cable <b>Item text1:</b> / 1.723-100.0 / -101.0 / -102.0 / -103.0 / -106.0 / -107.0 / -108.0 / -120.0 / -121.0	1.000	ST
10	9.036-997.0	Strain relief	1.000	ST
4	6.630-087.0	Switch	1.000	ST
6	6.490-185.0	Vacuum motor 1000 W 120 V / UL <b>Item text1:</b> /1.723-105.0	1.000	ST
6	4.490-016.0	Vacuum motor complete replacement 1200W <b>Item text1:</b> / 1.723-100.0 / -101.0 / -102.0 / -103.0 / -106.0 / -107.0 / -108.0 / -109.0 / -120.0 / -121.0 / -400.0 / -401.0 / -402.0 / -403.0 / -406.0 / -407.0	1.000	ST