

# QUICKSTART

## BR 30/4 C



### Warning

These are only brief instructions! Please read and comply with these instructions prior to using or servicing your appliance.

The non-compliance of the operating and safety instructions may lead to damages of the appliance and to dangers for the operator and other persons.

## Start up

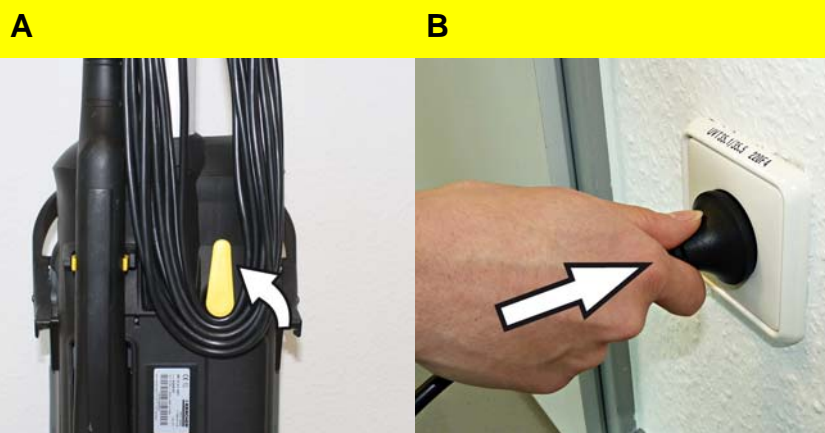
# 1



- A Remove the fresh water reservoir from the appliance.
- B Open the cover of the fresh water reservoir.
- C Pour in water/detergent mixture. Maximum temperature of the liquid 50 °C. Close the cover of the fresh water reservoir.
- D Insert the fresh water container into the appliance.



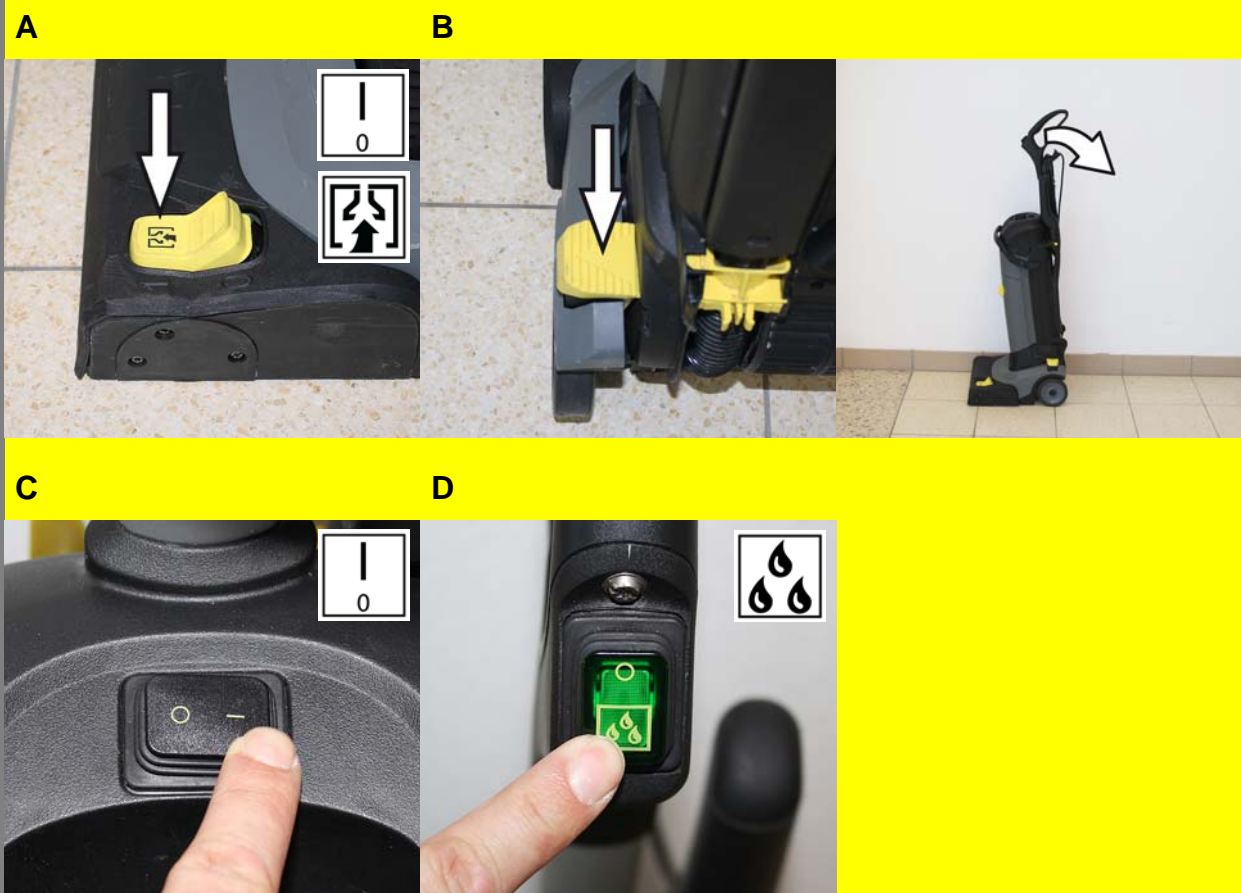
# 2



- A Swivel bottom cable hook upward and remove cable. Check mains cable and plug for damage or breakage. Get them replaced only through customer service agent or an electrician.
- B Connect the mains cable.

## Operation

# 1



### Normal soiling

#### ⚠ Danger

Risk of injury on account of electric shock caused by a damaged mains cable. Do not let the mains cable come in contact with the rotating brushes.

#### Caution

Risk of damage to the floor covering.

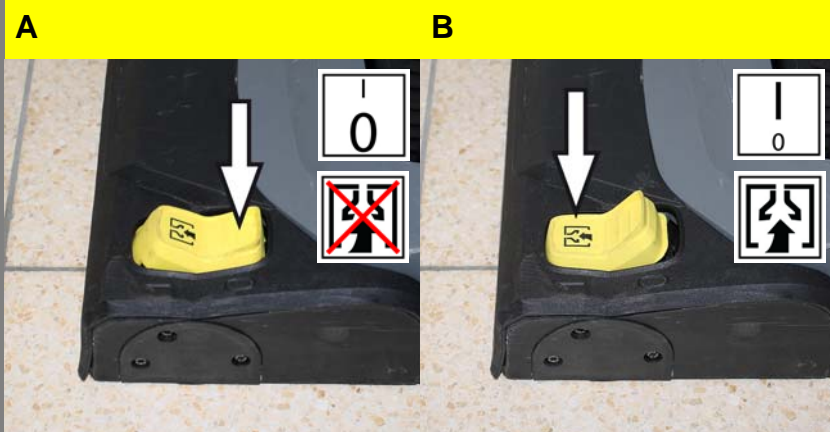
The cleaning method for severe soiling must only be used on floors suitable for this kind of cleaning.

Risk of damage to the fresh water pump if it runs dry because of empty fresh water reservoir.

Monitor the fill level indicator and switch the water pump switch off if the fresh water reservoir is empty.

- A Bring the vacuum bar lifting pedal into the "vacuuming" position.
- B Press the park position release and swivel the handle toward the rear.
- C Set main switch for brush/vacuum operation to "1".
- D Activate the water pump switch.  
Move the appliance over the surface to be cleaned.

# 2



### Severe soiling

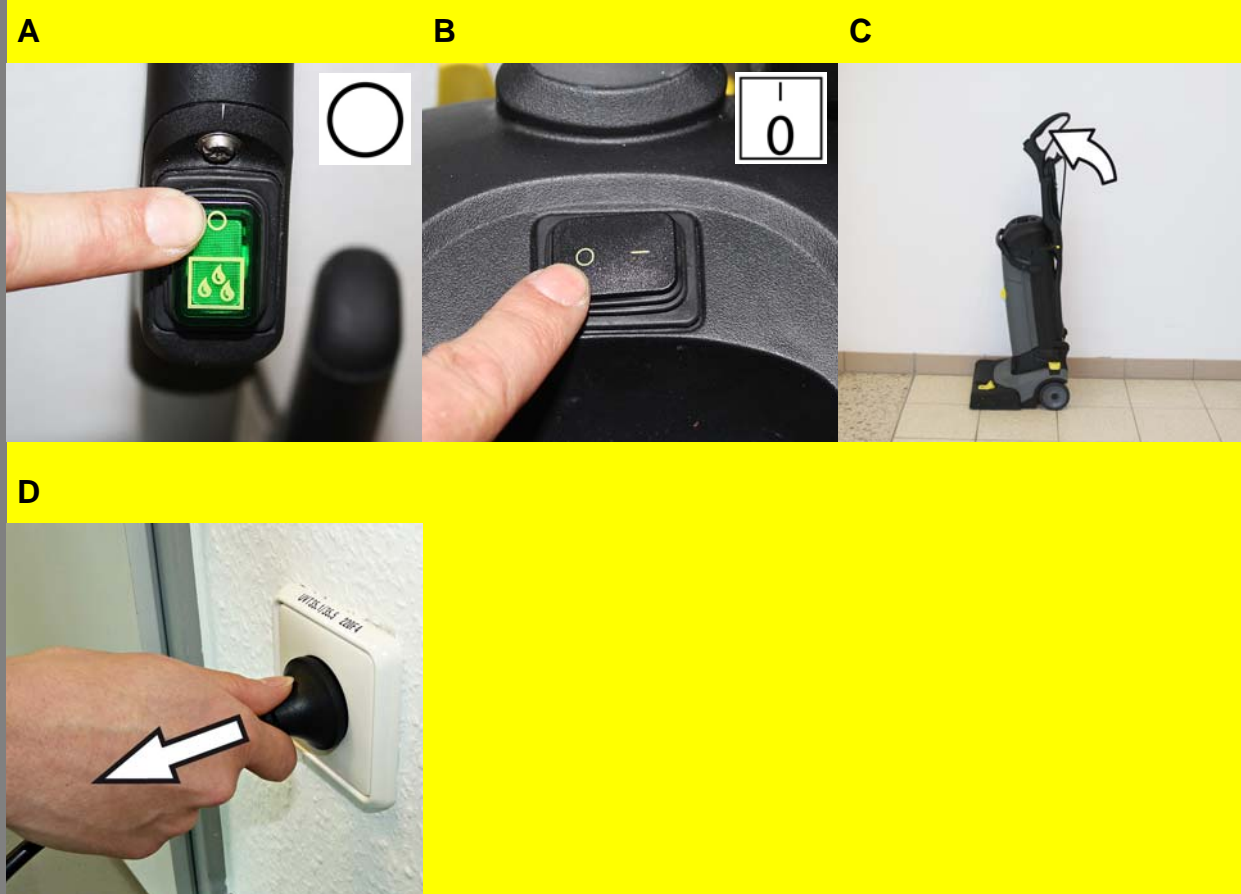
#### Caution

Risk of damage to the floor covering. The cleaning method for severe soiling must only be used on floors suitable for this kind of cleaning.

- A Set the vacuum bar lifting pedal to the "not vacuuming" position and perform cleaning as with normal soiling.  
The detergent liquid remains on the surface to be cleaned and has time to react
- B Move the vacuum bar lift pedal to position "suction off" and reclean the surface.

## Finish operation

# 1



### Complete cleaning

- A Turn off the water pump switch.  
Push the appliance a little further to vacuum up the remaining water.
- B Set main switch for brush/vacuum operation to "0".
- C Swivel the appliance handle forward and arrest in the park position.
- D Pull out the mains plug.

## Finish operation

2



### Emptying the Dirt Water Reservoir

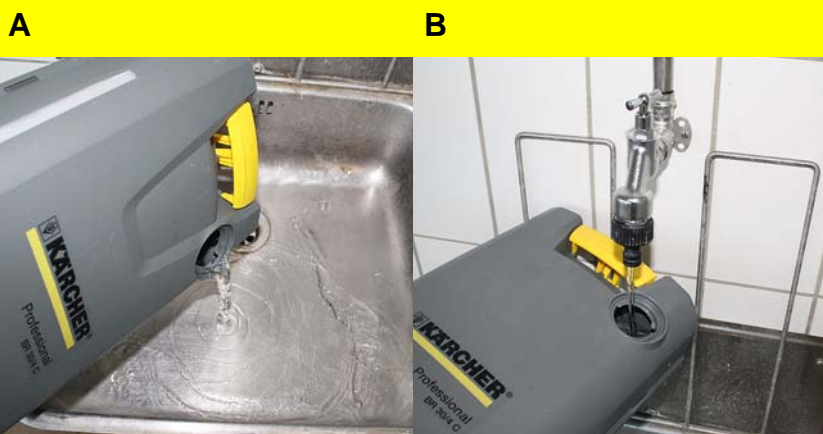
**Note**  
If the dirt water reservoir is full the float closes the suction channel. The suction operation is interrupted. Empty the dirt water reservoir.

**Warning**

Please observe the local provisions regarding the wastewater treatment.

- A Remove the fresh water reservoir from the appliance.  
Swivel support bow downward and remove the waste water reservoir.
- B Lift the lock and remove the lid of the waste water reservoir.
- C Pour out dirty water.  
The rinse the dirt water reservoir with clear water.  
Replace the lid of the waste water reservoir and lock it.  
Insert the waste water container into the appliance.

3



### Emptying the Fresh Water Tank

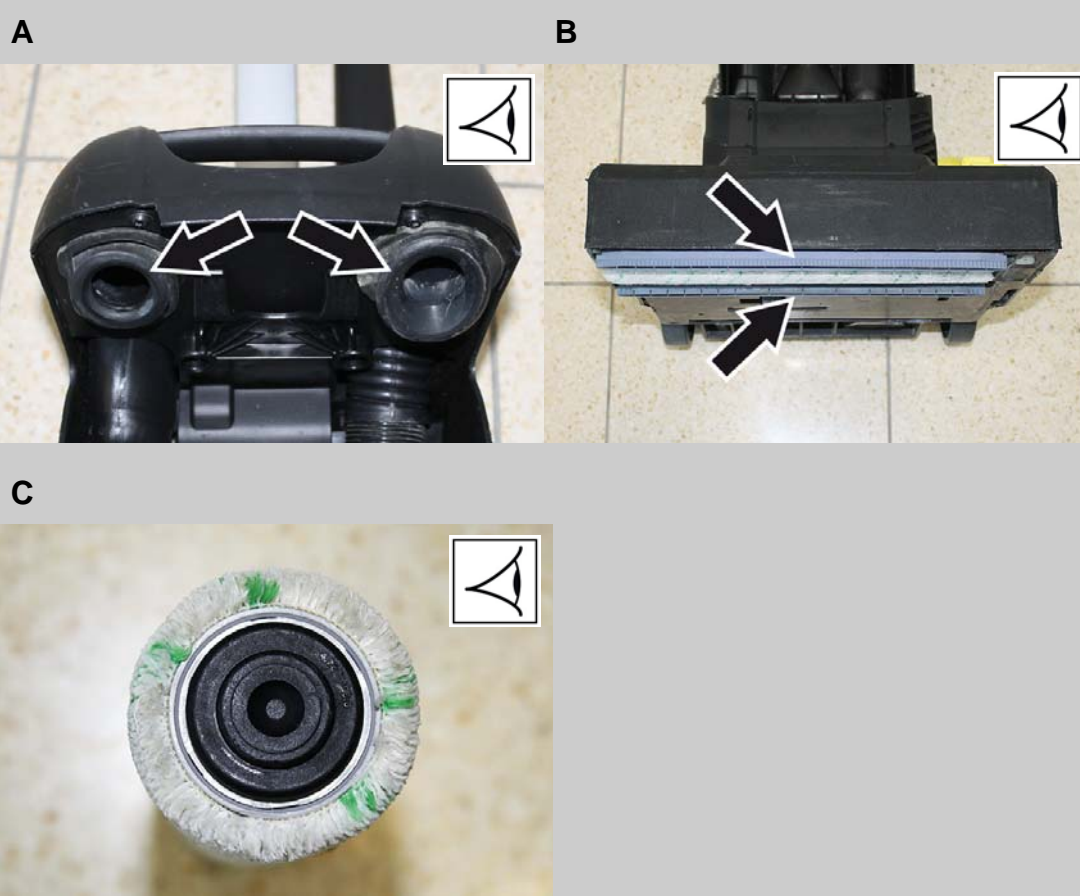
**Warning**

Please observe the local provisions regarding the wastewater treatment.

- A Remove the fresh water reservoir from the appliance.  
Open the cover of the fresh water reservoir.  
Pour out the cleaning liquid.  
Close the cover of the fresh water reservoir.  
Insert the fresh water container into the appliance.
- B Rinse the fresh water tank with clear water.

## Maintenance and care

1



- A Clean the seals between the waste water reservoir and the appliance.
- B Clean the vacuum bar, check for wear and replace if necessary.
- C Check the brushes for wear, replace if required.
- D Rinse the appliance: Fill the fresh water reservoir with clear water (without detergent) and let the appliance run for one minute with the brush water supply turned on.
- E Clean the outside of the appliance with a damp cloth which has been soaked in mild detergent.

daily

weekly

annual

## Maintenance and care

2

Have the prescribed safety inspection carried out by an electrician.

daily

weekly

annual